



# QUANTUM COMPUTING

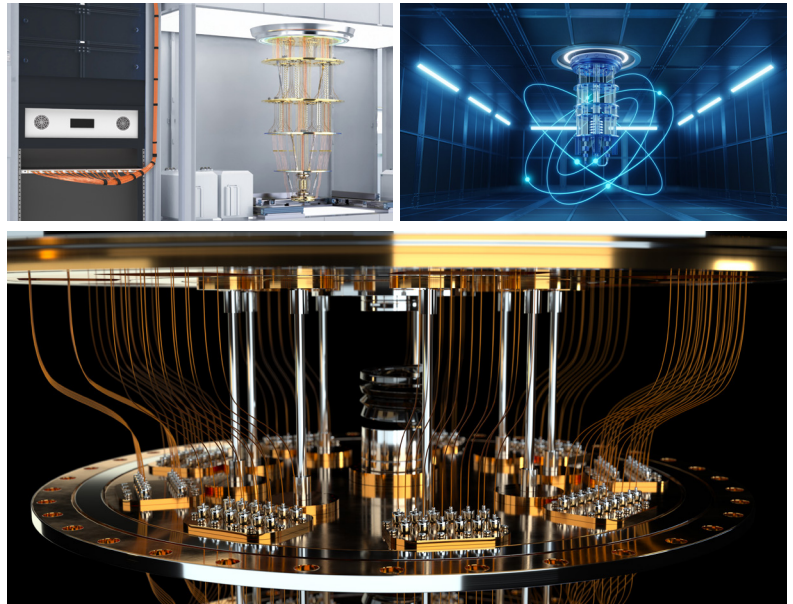
Samtec Sudden Service® interconnect solutions feature harsh environment component qualification, industry-leading bandwidth density, design-in support, precision RF performance, and open-pin-fields to support quantum computing designs. Samtec standard and custom Precision RF products handle up to 130 GHz with ultra-small form factor options, advanced terminations, and flexible cable. For the designer, Samtec offers full-system technical support including launch optimization, simulation and testing. For more information visit [samtec.com/quantum-computing](http://samtec.com/quantum-computing) or email [SIG@samtec.com](mailto:SIG@samtec.com).

## Product Features & Benefits

- Small form factors / ultra-high densities
- High-performance test systems
- High frequency / low latency systems
- Extended signal reach
- Signal integrity-optimized solutions

## Design & Development Support

- RF technical support for launch optimization, simulation and test & measurement
- Samtec cable assemblies also undergo cable flex and/or dynamic testing to prove consistent electrical stability in demanding applications
- Industry-leading component and system-level engineering expertise



## RF DESIGN, DEVELOPMENT & TECHNICAL SUPPORT

Samtec offers high-quality RF products from design and fabrication to technical support.

- Launch optimization & design services
- Simulation
- Prototyping
- Physical test and measurement verification

Contact Samtec's RF Group at [RFGroup@samtec.com](mailto:RFGroup@samtec.com) for assistance

## SIGNAL INTEGRITY SUPPORT

Samtec is the industry leader in Signal Integrity. Our mission is to help you attain full system optimization - from Silicon-to-Silicon™.

- Full channel analysis
- System optimization recommendations
- PDN simulations
- Advanced product design support

Visit [samtec.com/sig](http://samtec.com/sig) or contact [SIG@samtec.com](mailto:SIG@samtec.com).

## EVALUATION & DEVELOPMENT KITS

Samtec-designed kits simplify the interconnect design process and reduce time to market.

Kits are tested and verified by Samtec's signal integrity experts before customer delivery.

Visit [samtec.com/kits](http://samtec.com/kits) or contact [KitsAndBoards@samtec.com](mailto:KitsAndBoards@samtec.com).

## ONLINE TOOLS

**Solutionator®:** Quickly build mated connector sets or design full cable assemblies



[samtec.com/rf-cablebuilder](http://samtec.com/rf-cablebuilder)



[samtec.com/discrete-cablebuilder](http://samtec.com/discrete-cablebuilder)



[samtec.com/hsb2b-solutionator](http://samtec.com/hsb2b-solutionator)

**Picture Search:** Browse through Samtec's most popular products to find the ideal solution

[samtec.com/picturesearch](http://samtec.com/picturesearch)

**Downloadable Resources:** Immediate and unlimited access to select the right solution - 3D models, prints and footprints, test reports, white papers and more

[samtec.com](http://samtec.com)

# INTERCONNECT SOLUTIONS

## Precision RF

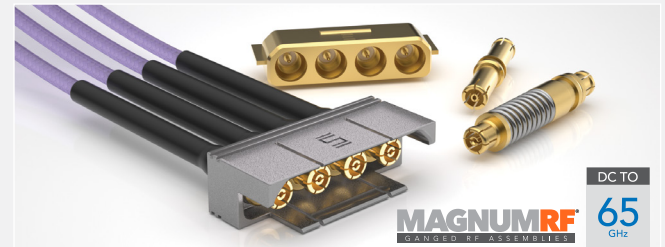
Cable assemblies, cable connectors, board connectors and adaptors for 18 to 130 GHz high frequency, microwave and mmWave applications with full system support.



[samtec.com/precisionrf](http://samtec.com/precisionrf)

## Ganged, Multi-Port RF Solutions

Ganged, multi-port SMPM blocks and cable assemblies in a miniature, high-density design with mode free operation up to 65 GHz for mmWave applications.



[samtec.com/magnumrf](http://samtec.com/magnumrf)

## High Isolation RF Solutions

Isolated signal 50  $\Omega$  board stacking and cable assemblies for 90% performance of traditional RF at half of the cost; full ganged system or with industry standard end 2 options.



[samtec.com/isorate](http://samtec.com/isorate)

## High-Performance Test Systems

Bulls Eye<sup>®</sup> test and measurement assemblies to 130 GHz/ 448 Gbps with a high-density, space saving design that enables smaller evaluation boards and shorter trace lengths.



[samtec.com/bullseye](http://samtec.com/bullseye)

## Nitrowave<sup>™</sup>

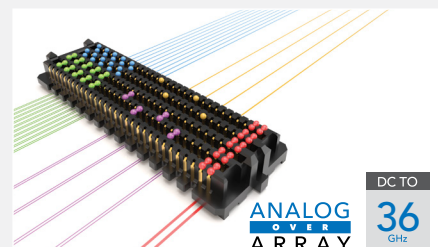
Phase and amplitude stable RF cable with a Dynamic Performance Layer for accurate and dependable performance.



[samtec.com/nitrowave](http://samtec.com/nitrowave)

## Analog Over Array<sup>™</sup>

High-density, high frequency, open-pin-field solutions supporting digital and analog signaling.



[samtec.com/analog-over-array](http://samtec.com/analog-over-array)

## Ultra Rugged I/O Systems

EMI shielded cable systems with Hyper Claw<sup>™</sup> hyperboloid type contacts for reliability and high mating cycles.



[samtec.com/ursaio](http://samtec.com/ursaio)

Visit [samtec.com](http://samtec.com) to view our full line of interconnect solutions.

© APRIL 2026, SAMTEC INC.