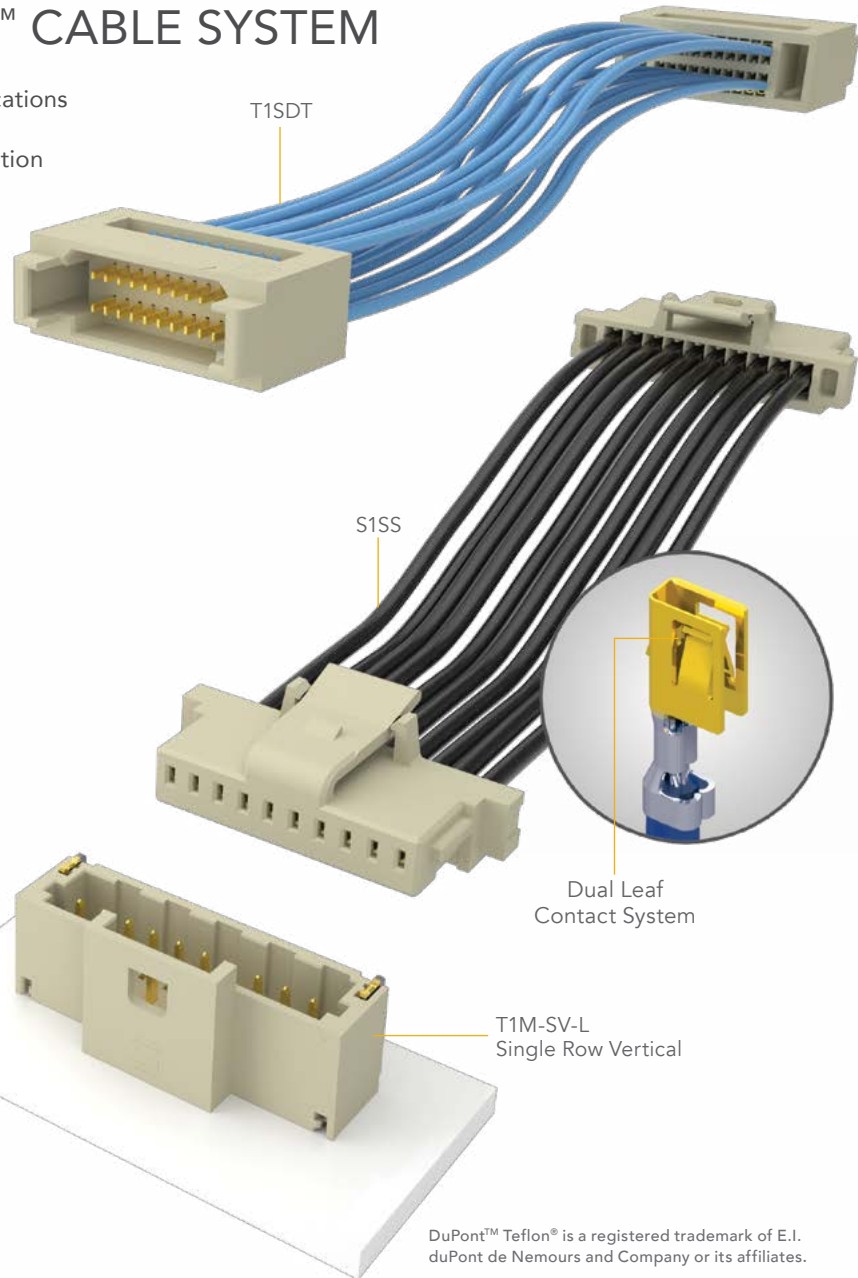




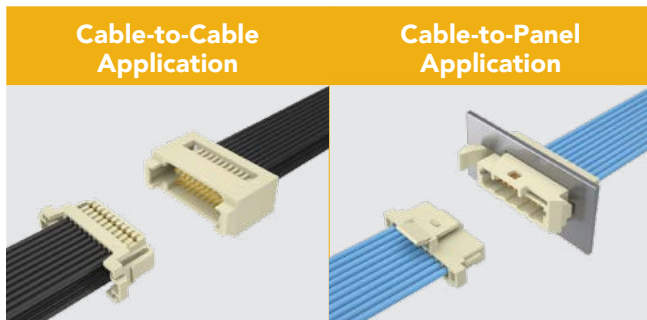
# FLEXIBLE MICRO DISCRETE WIRE

## 1.00 mm PITCH MICRO MATE™ CABLE SYSTEM

- Cable-to-board, cable-to-cable and cable-to-panel applications
- Crimp-style dual leaf contact system for a reliable connection
- Low profile design down to 3.2 mm
- Single or double row up to 40 total pins
- 28 and 30 AWG cable options in PVC or Teflon®
- 3.3 A/pin (28 AWG)
- Choice of socket and terminal assemblies
- Rugged positive latching for increased retention
- Mating terminal strip in vertical or right-angle
- Components and tooling available



## MICROMATE™



DuPont™ Teflon® is a registered trademark of E.I. duPont de Nemours and Company or its affiliates.

### 1.00 mm Pitch Micro Mate™ Discrete Wire Systems

- S1SS/S1SST/S1SD/S1SDT – Socket Cable Assembly
- T1SS/T1SST/T1SD/T1SDT – Terminal Cable Assembly
- T1PS/T1PST/T1PD/T1PDT – Panel Mount Terminal Cable Assembly
- T1M – Terminal Strip
- ISS1/ISD1 – Socket Body
- CC09R/CC09M – Contact, Full or Mini Reel
- IST1/ISP1/IDT1/IDP1 – Terminal Body
- TC37R/TC37M – Terminal, Full or Mini Reel

For more information, please visit [www.samtec.com/micro-mate](http://www.samtec.com/micro-mate)

# 1.00 mm PITCH MICRO MATE™ SOLUTIONS



## S1SS/S1SST

Single Row Socket Cable Assembly  
PVC or Teflon®



## T1SS/T1SST

Single Row Terminal Cable Assembly  
PVC or Teflon®



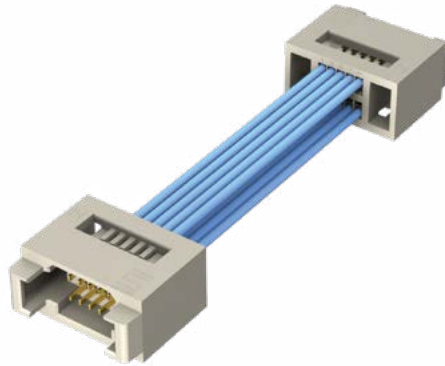
## T1PS/T1PST

Panel Mount, Single Row  
Terminal Cable Assembly  
PVC or Teflon®



## S1SD/S1SDT

Double Row Socket Cable Assembly  
PVC or Teflon®



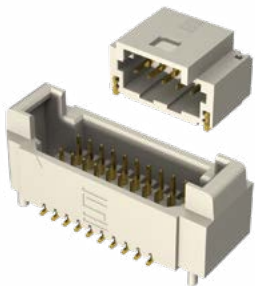
## T1SD/T1SDT

Double Row Terminal Cable Assembly  
PVC or Teflon®



## T1PD/T1PDT

Panel Mount, Double Row  
Terminal Cable Assembly  
PVC or Teflon®



## T1M

Terminal Strip, Single and  
Double Row, Vertical and Right-Angle



## ISS1/ISD1

Single and Double Row  
Socket Body



## IST1/IDT1

Single and Double Row  
Terminal Body



## ISP1/IDP1

Single and Double Row  
Panel Mount Body



## CC09R/CC09M

Contact, Full Reel (25K/reel)  
and Mini Reel (1K/reel)



## TC37R/TC37M

Terminal, Full Reel (25K/reel)  
and Mini Reel (1-5K/reel)

## Tooling available:

CAT-HT-309-2830-12  
CAT-MC-309-2830-XX-01