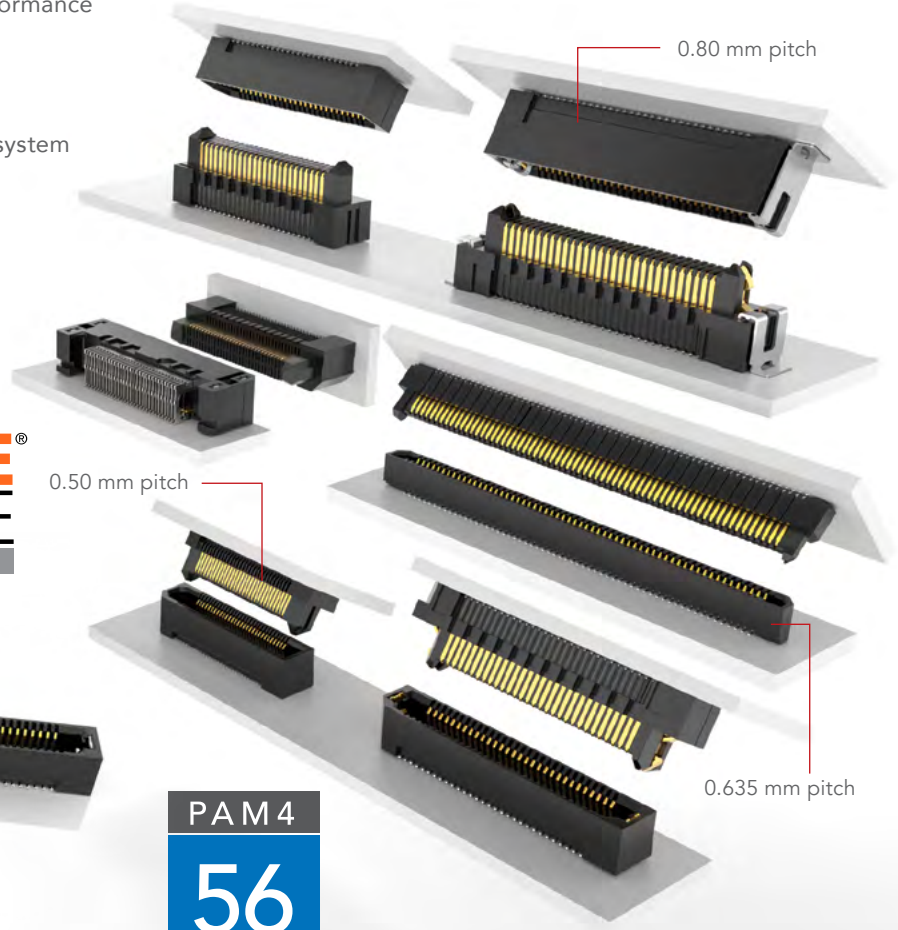




# RUGGED HIGH-SPEED STRIPS

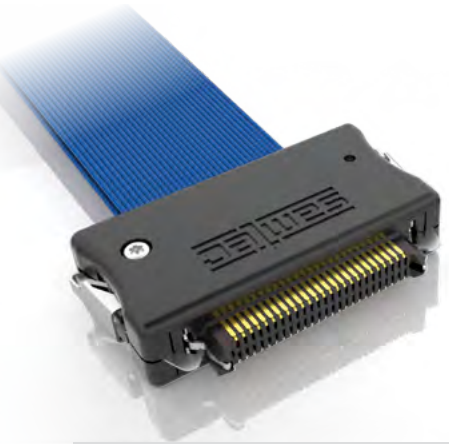
## EDGE RATE® INTERCONNECTS

- Edge Rate® contacts optimized for signal integrity performance
- Up to 1.5 mm contact wipe for a reliable connection
- 10 – 200 positions
- Extremely slim 2.5 mm body width on 0.635 mm pitch system
- 0.50 mm pitch system for up to 40% space savings vs. 0.80 mm pitch system
- 0.80 mm pitch coax and twinax cable assemblies
- Rugged latching, locking and 360° shielding available
- Edge mount and right-angle available
- Compatible with UMPT/UMPS for power/signal flexibility



**EDGE RATE**  
CONTACT

PAM 4  
**56**  
G b p s

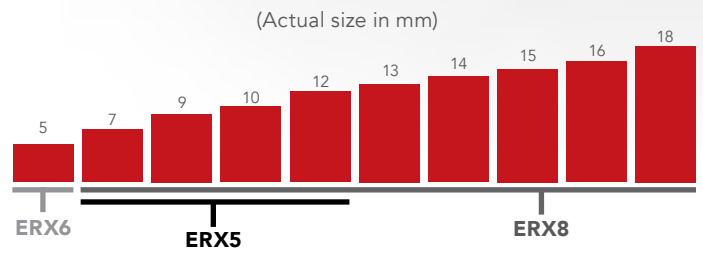


### Edge Rate® Contact System

- Smooth milled mating surface reduces wear and increases durability
- Lower insertion and withdrawal forces
- Robust when “zippered” during unmating
- Minimized parallel surface area reduces broadside coupling and crosstalk
- Designed, simulated and optimized for 50 Ω and 100 Ω systems



### STACK HEIGHT FLEXIBILITY



### System

- ERM5/ERF5 – 0.50 mm Pitch Strips
- ERM6/ERF6 – 0.635 mm Pitch Strips
- ERM8/ERF8 – 0.80 mm Pitch Strips
- ERCD – 0.80 mm Pitch Coax Cable Assembly
- ERDP – 0.80 mm Pitch Twinax Cable Assembly

For more about Samtec's Edge Rate® solutions, please visit [www.samtec.com/edgerate](http://www.samtec.com/edgerate)

# EDGE RATE<sup>®</sup> SOLUTIONS



## ERM5/ERF5

0.50 mm pitch, up to 150 positions  
7 - 12 mm stack heights  
Right-angle available (socket only)



## ERM6/ERF6

0.635 mm pitch, up to 120 positions  
5 mm stack height  
Slim 2.5 mm body width



## ERM8/ERF8

0.80 mm pitch, up to 200 positions  
7 - 18 mm stack heights  
Edge mount and right-angle available



## ERCD

0.80 mm pitch, up to 120 positions  
34 AWG micro coax cable



## ERDP

0.80 mm pitch, up to 98 positions  
30 AWG twinax cable

## ALSO AVAILABLE



Rugged metal latching for increased retention force



360° shielding option reduces EMI



Micro power system (UMPT/UMPS) for power/signal flexibility

For more about Samtec's Edge Rate<sup>®</sup> solutions, please visit [www.samtec.com/edgerate](http://www.samtec.com/edgerate)