

BE70A & BE40A SERIES INSTALLATION & REMOVAL

BULLSEYE®
TEST POINT SYSTEM

Bulls Eye® Test Assembly

- BE70A to 70 GHz: Ideal for testing the latest 112 Gbps PAM4 silicon chips.
- BE40A to 50 GHz: Ideal for testing 56 Gbps PAM4 silicon chips.

To achieve these product advantages, it's important to properly install Bulls Eye® assembly to the board.

BE40A shown.



INSTALLATION

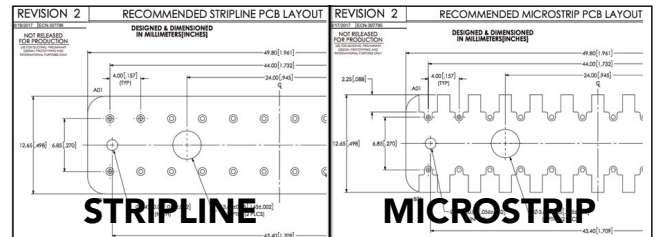
FULL ASSEMBLY TO BOARD

Confirm Footprint / Specifications

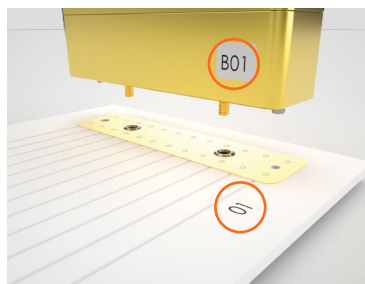
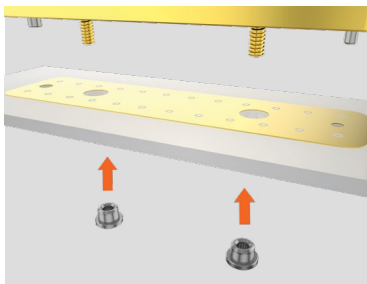
samtec.com?BE70A or samtec.com?BE40A

1. Signal vias are back-drilled
2. PCB pads are hard gold
3. Stiffener plate: Recommended for PCB thicknesses < .093"

Then, continue with board attach.



Board Attach



Press-fit Nuts

1. Unthread the two nuts from the assembly
2. Press-fit the two nuts into the hardware holes on the bottom side of the PCB

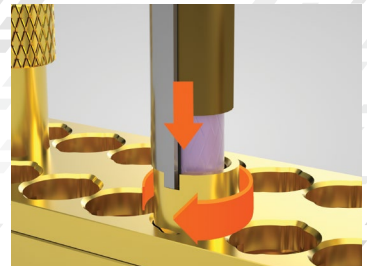
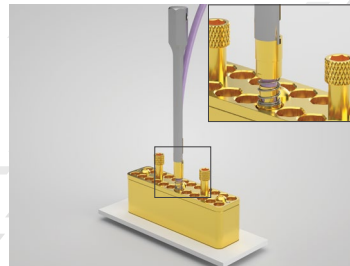
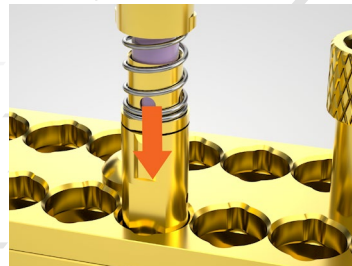
Match Pin 1 Indicators

3. Orient the cable assembly so the Pin 1 indicator on the board and cable match

Tighten Gradually

4. Gradually tighten, alternating between each thumbscrew
5. Torque: 2 in-lbs.

SINGLE CABLE TO BLOCK



To Install

- You will need the supplied tool
- Tool P/N: CAT-EX-SCC-03

Align, Insert Cable

1. Align keying on cable and block
2. Insert cable

Insert Tool

3. Insert tool into notch
4. Make sure notch is parallel to long edge of block

Push Down - Rotate 90°

5. Push down to compress the spring and rotate 90°
6. Cable is locked when notch is facing long edge of block

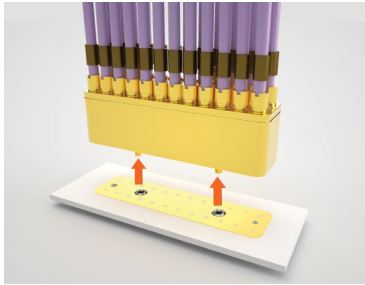
REMOVAL

REMOVING FULL ASSEMBLY



Loosen Thumbscrews

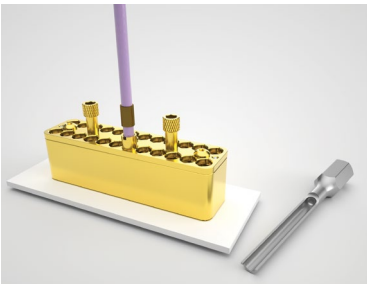
1. Loosen the thumbscrews, alternating between each thumbscrew



Lift Off PCB

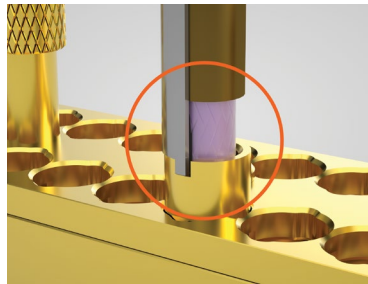
2. Carefully lift the assembly off the PCB

REMOVING INDIVIDUAL CABLES



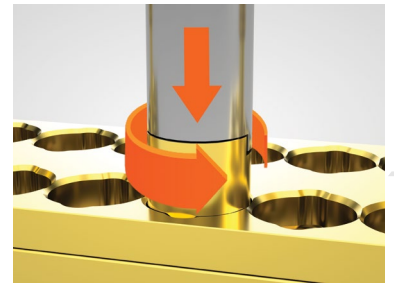
To Remove

- You will need the supplied tool
- Tool P/N: CAT-EX-SCC-03



Insert Tool

1. Insert tool into notch



Push Down - Rotate 90°

2. Push down to compress the internal spring then rotate 90°
3. Release the insertion tool

Replacement components:

Contact Samtec if replacement components are needed.

- 70 GHz, BE70A Components: Block: BE70B Series / Cable: BE70C Series
- 50 GHz, BE40A Components: Block: BE40B Series / Cable: BE40C Series

Contact RFGroup@samtec.com for assistance.

There are a variety of series within Samtec's BullsEye® product family. While the installation/removal process for these are similar, each have unique specifications that need to be observed.



samtec.com/BullsEye