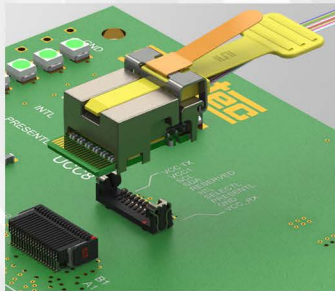


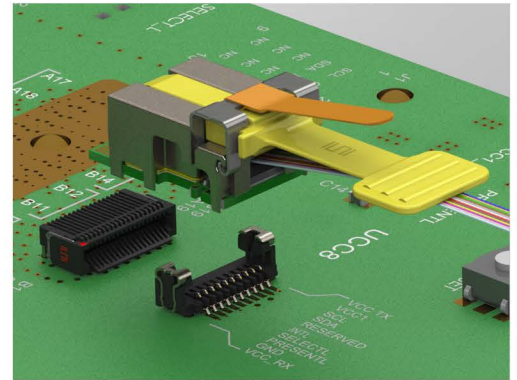
# FIREFLY™

## INSERTION AND REMOVAL INSTRUCTIONS

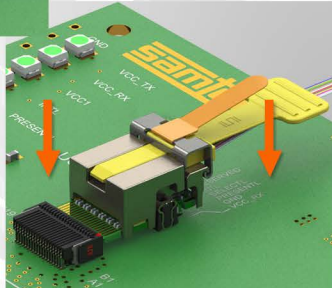
### Unmated (Latch Open)



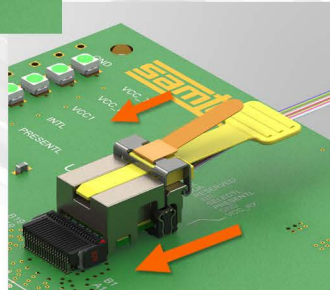
- 1 Align cable assembly so that notches in PCB are over the positive latching receptacle.



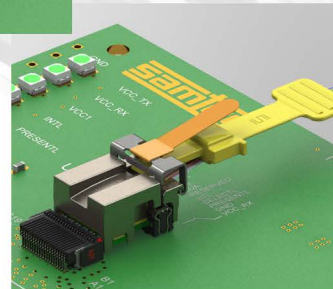
- 2 Drop cable assembly down keeping it parallel to the board.



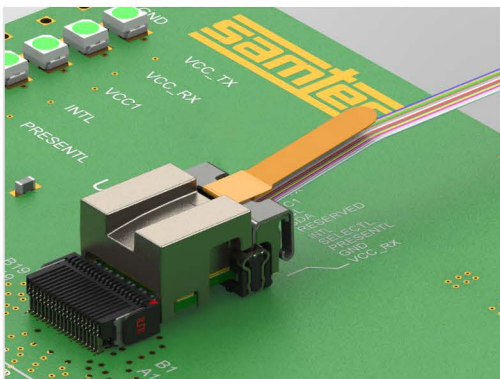
- 3 Slide cable assembly forward keeping it level until fully engaged.



- 4 Remove by pulling the latch position retainer.



### Mated (Latch Down)



- 5 Depress latch to lock cable assembly into the connector.

