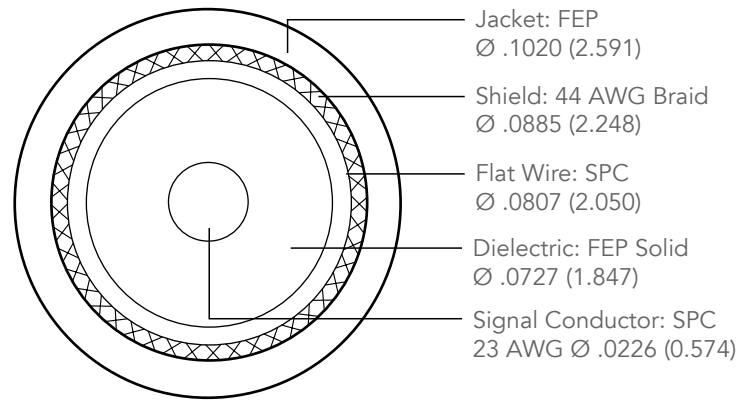
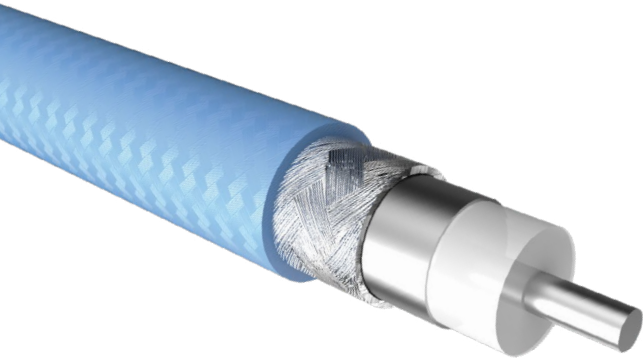


# 50 Ω, 23 AWG MICRO COAX CABLE

MWC-2350-01



## PERFORMANCE DATA

Capacitance: 29.1 pF/ft (nominal)  
 Propagation Delay: 1.44 ns/ft  
 Flex Cycles: 500 cycles, single conductor\*  
 Current Rating: Single conductor = 7.4 Amps\*\*

Shield DCR: 11 Ω/1000 ft  
 CC DCR: 21.6 Ω/1000 ft  
 Min. Bend Radius: .350"  
 Availability: Single  
 Temperature Rating: -40 °C to 200 °C, UL VW-1 Tested \*\*\*  
 DWV Working Voltage: 406 V<sup>†</sup>

Insertion Loss	0.25 m	1 m
-3 dB	>20 GHz	16.6 GHz
-7 dB	>20 GHz	>20 GHz

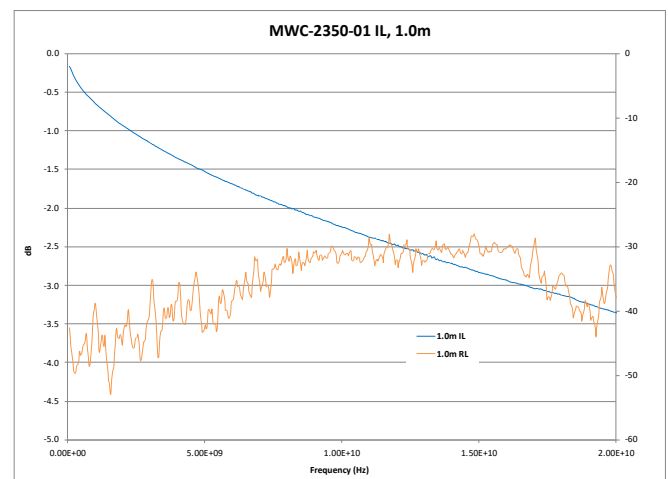
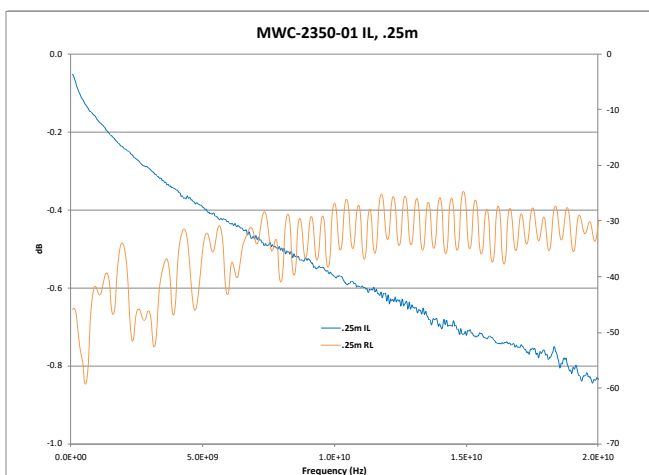
\* Test Conditions – 8 oz. weight, dia 7/8" mandrel, +/-90 bend X2

\*\* Rating – 30 °C Temperature Rise, 20% de-rated.

\*\*\* Temperature Rating – Heat Shock/Cold Soak per UL #1581, wire wrap 1/4" mandrel, visual inspection

<sup>†</sup>Test Conditions – IR/DWV/Thermal Shock/Humidity per EIA-364-20, 21, 31 and 32

## INSERTION LOSS AND RETURN LOSS GRAPHS<sup>†</sup>



<sup>†</sup>IL and RL data is typical. Results may vary. DUT terminated with SMA Connector and has not been de-embedded.



1.800.SAMTEC.9 • HDR@samtec.com

November 6, 2015 • Rev: A