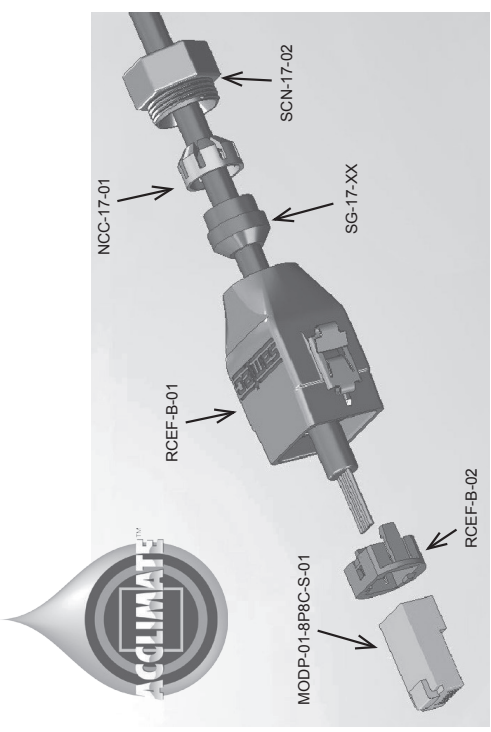


Field Terminated Ethernet Kit Wiring/Assembly Instructions for RCEF-G-01 & RCEF-G-02

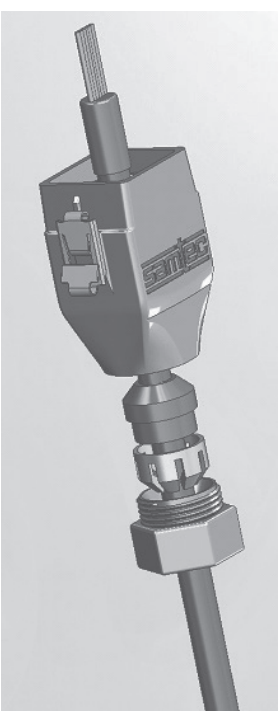


WWW.SAMTEC.COM
 1-800-SAMTEC-9
 812-944-6733
info@samtec.com
 520 Park East Blvd.
 New Albany, IN 47150
 812-944-6733
 Revised: April, 2010
[/rcfe.indd](#)

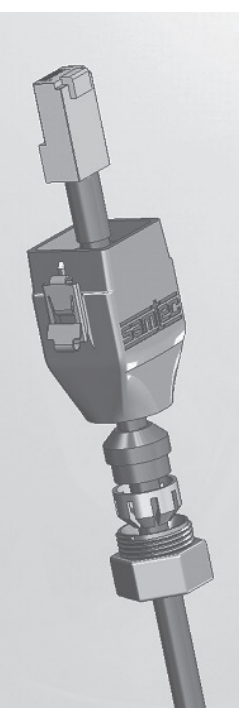


Assembly Instructions

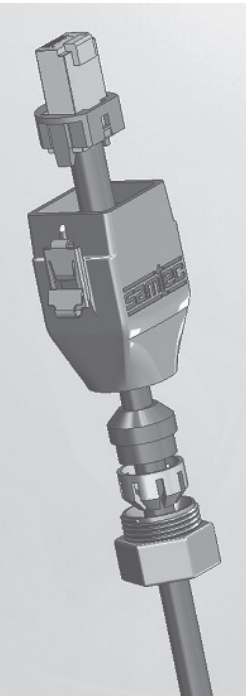
1. Thread the SCN-17-02, NCC-17-01, SG-17-XX and RCEF-B-01 on to the Ethernet CAT 5e cable.



2. Strip the Ethernet CAT 5e cable to 15.00 mm.

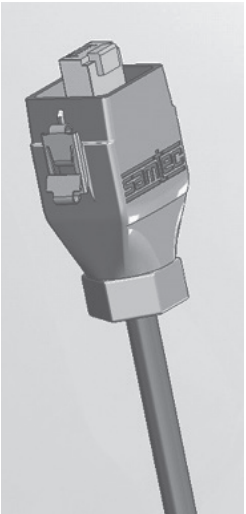


3. Crimp MODP-01-8P8C-S-01 on to the stripped cable end.



4. Snap the MODP-01-8P8C-S-01 past beams on RCEF-B-02 and locate RCEF-B-02 in to the RCEF-B-01 housing.

5. Slide SG-17-XX, NCC-17-01 and SCN-17-02 down the Ethernet Cat 5e cable and locate in the RCEF-B-01 housing. Finally, screw SCN-17-02 on to the RCEF-B-01 housing until the SCN-17-02 rests on the housing.



POS	COLOR	WIRE	POS	COLOR	WIRE
01	WHITE/ORANGE	TWISTING	05	WHITE/BLUE	TWISTING
02	ORANGE	TWISTING	06	GREEN	TWISTING
03	WHITE/GREEN	TWISTING	07	WHITE/BROWN	TWISTING
04	BLUE	TWISTING	08	BROWN	TWISTING