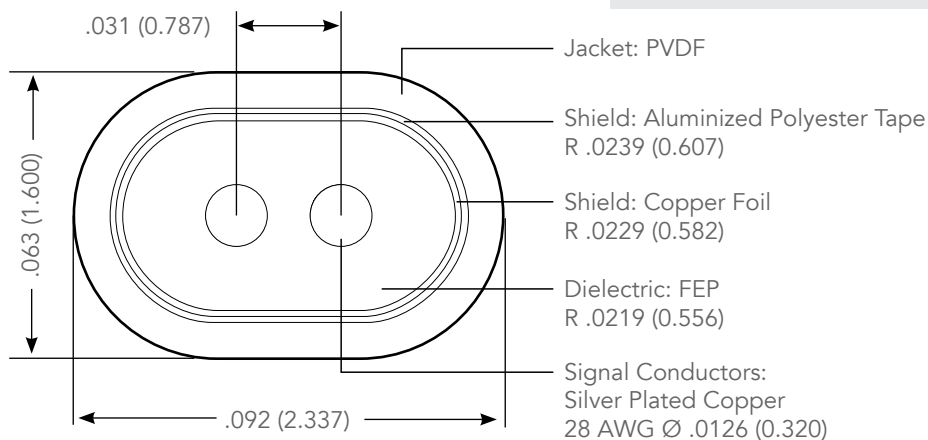
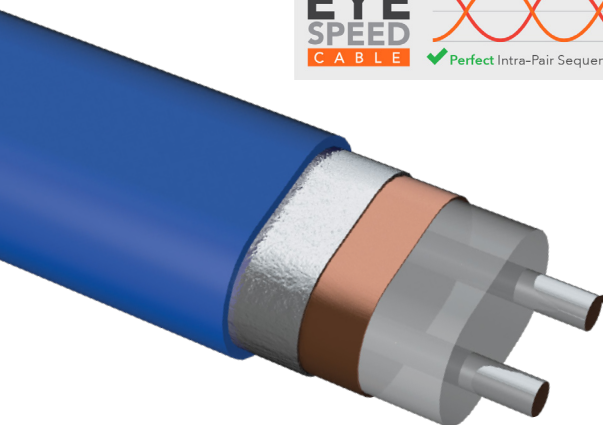


100 Ω, 28 AWG SOLID, CU MICRO TWINAX CABLE HT

TTF-28100CU-01-PVDF-S



PERFORMANCE DATA

Capacitance:	14.1 pF/ft leg-to-leg (nominal)
Skew:	3.5 ps/m max within pairs
Propagation Delay:	1.45 ns/foot
Flex Cycles:	2,000 cycles, single*
Current Rating:	Single conductor = 3.5 Amps** 2 conductors = 2.7 Amps**
Shield DCR:	63 Ω/1000 ft
CC DCR:	66 Ω/1000 ft
Min. Bend Radius:	.125" (single bend only for <1 Ω impedance drop)
Temperature Rating:	-40 °C to 140 °C ***
Flammability Rating:	UL VW-1†
Breakdown Voltage:	1503 V‡

Insertion Loss	0.25 m	1 m
-3 dB	>30 GHz	8.8 GHz
-7 dB	>30 GHz	>30 GHz

* Test Conditions – 4 oz. weight, dia 7/8" mandrel, +/-90 bend

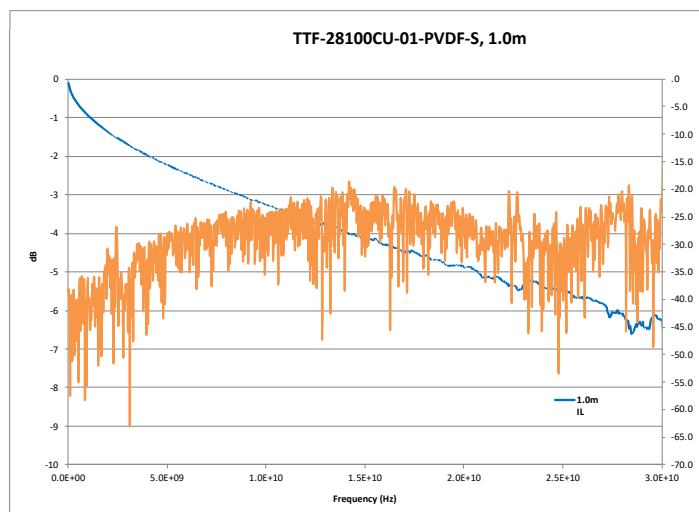
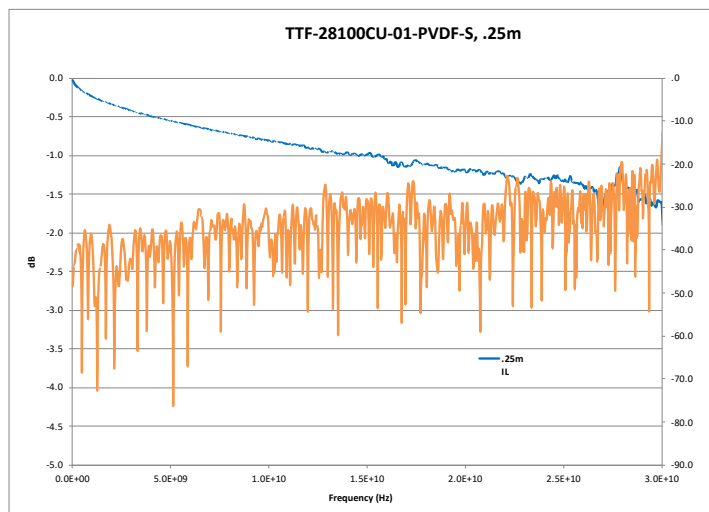
**Rating – 30 °C Temperature Rise, 20% de-rated.

***Test Conditions – Heat Shock/Cold Soak per UL1581, wire wrap 1/4" mandrel, visual inspection

†TX-28100CU-T01-S has undergone UL VW-1 Research Testing and complies with UL 758.

‡Typical. The DWV voltage is 75% of the min breakdown voltage. The working voltage is 25% of the breakdown voltage. Test condition – IR/DWW/Thermal Shock/Humidity per EIA-364-20, 21, 31 and 32.

INSERTION LOSS AND RETURN LOSS GRAPHS[§]



[§]IL and RL data is typical. Results may vary.



1.800.SAMTEC.9 • HDR@samtec.com

May 12, 2026 • Rev: A