

D	OZ	M HOLST
5/16/2008	ECN-91076	

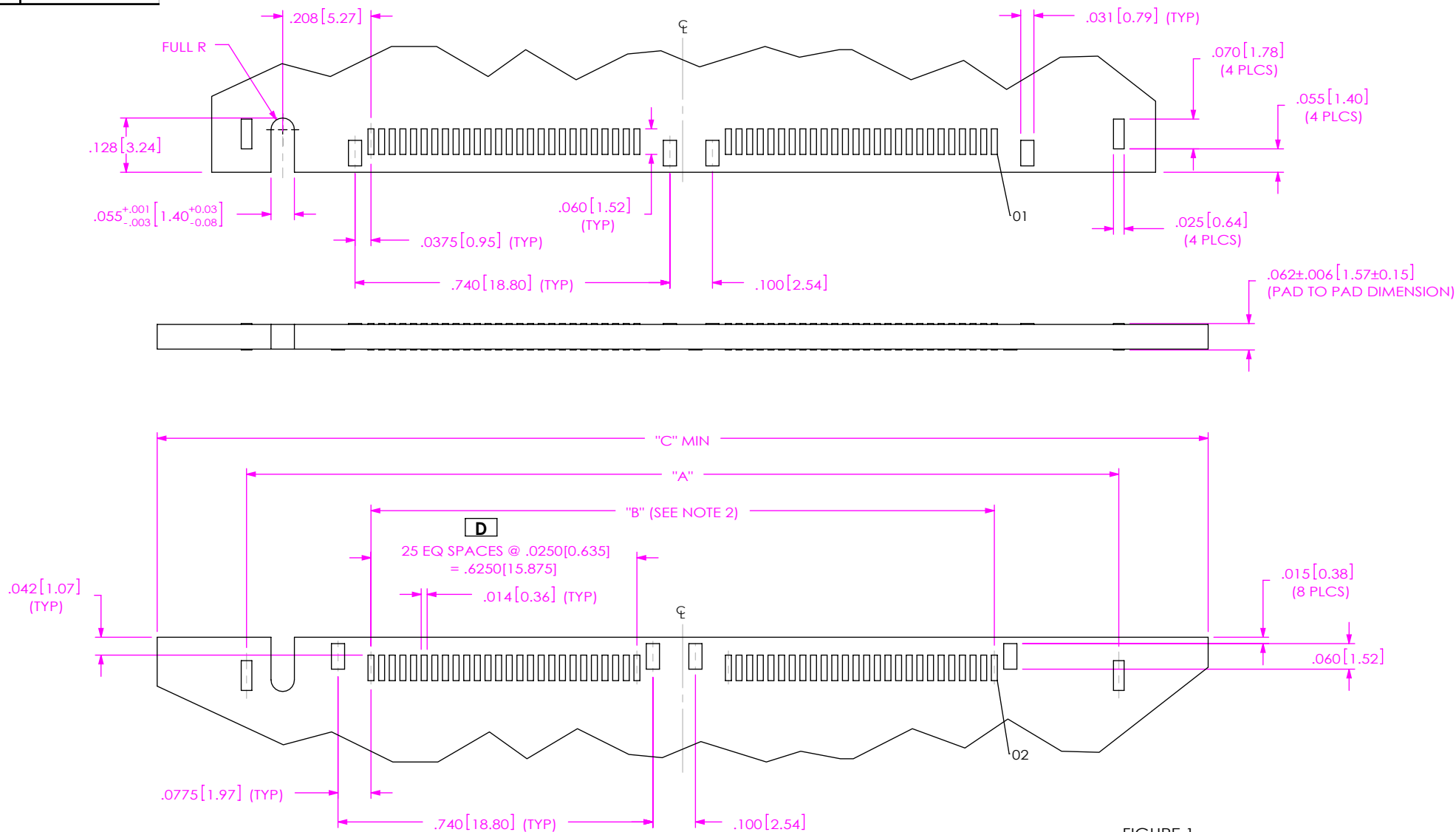


FIGURE 1  
QMSS-052-01-X-XX-EM2 DESIGN SHOWN

# NOTES:

- NOTE DELETED.
- DIMENSION NOT AVAILABLE ON -026 POSITIONS.
- DESIGNED IN ENGLISH

TABLE 1			
POSITION	"A"	"B"	"C"
-026	1.210[30.73]	---	1.330[33.78]
-052	2.050[52.07]	1.465[37.21]	2.170[55.12]
-078	2.890[73.41]	2.305[58.55]	3.010[76.45]
-104	3.730[94.74]	3.145[79.88]	3.850[97.79]
* -130	4.570[116.08]	3.985[101.22]	4.690[119.13]

\* = NOT TOOLED

## PROPRIETARY NOTE

THIS DOCUMENT CONTAINS INFORMATION  
CONFIDENTIAL AND PROPRIETARY TO  
SAMTEC, INC. AND SHALL NOT BE REPRODUCED  
OR TRANSFERRED TO OTHER DOCUMENTS OR  
DISCLOSED TO OTHERS OR USED FOR ANY  
PURPOSE OTHER THAN THAT WHICH IT WAS  
OBTAINED WITHOUT THE EXPRESSED WRITTEN  
CONSENT OF SAMTEC, INC.

**samtec**

520 PARK EAST BLVD, NEW ALBANY, IN 47150  
PHONE: 812-944-6733 FAX: 812-948-5047  
e-Mail: info@SAMTEC.com code: 55322

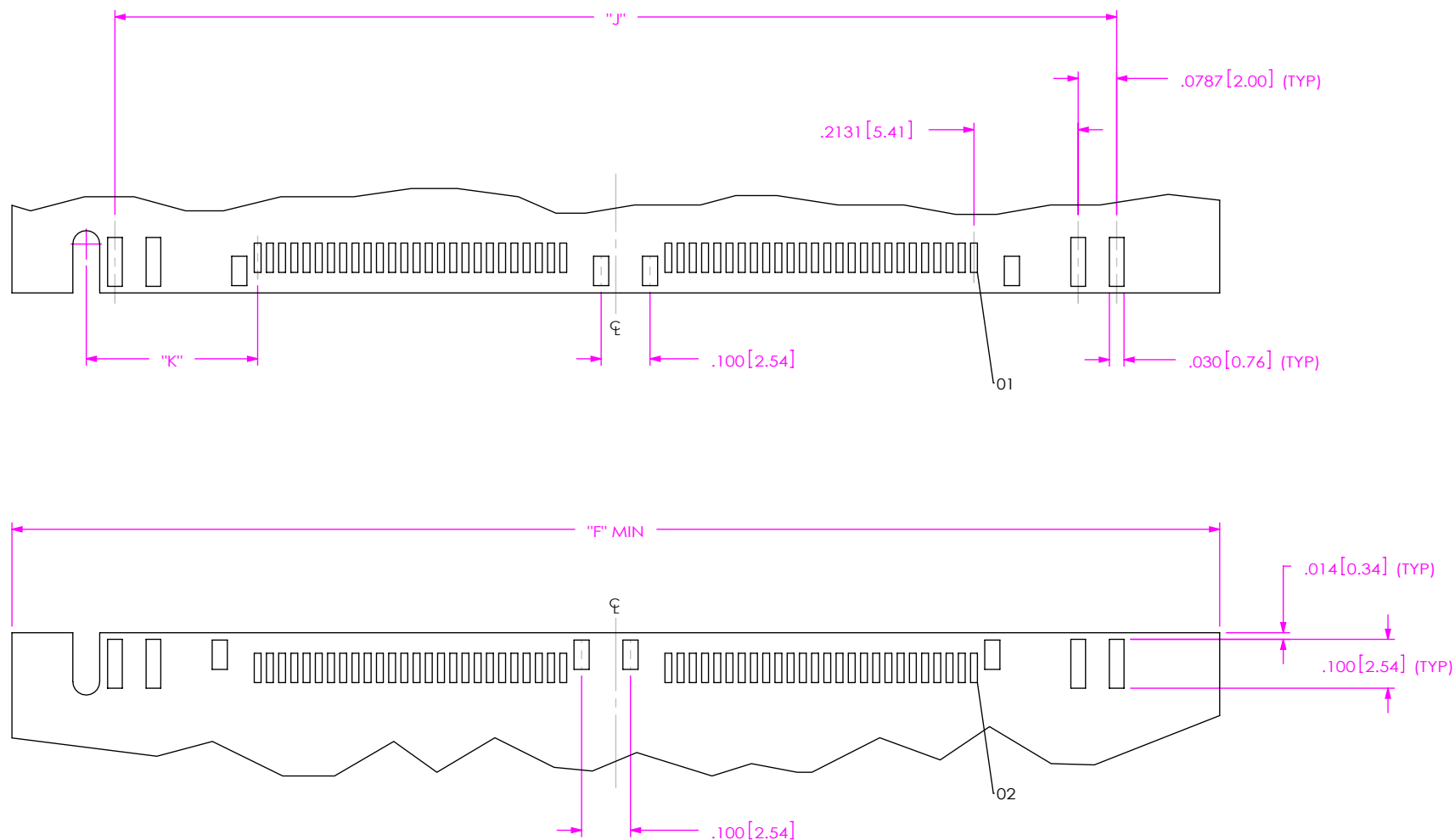


FIGURE 2

QMSS-052-01-X-XX-EM2-PC4 DESIGN SHOWN  
[DIFFERENT AS SHOWN, OTHERWISE SAME AS FIGURE 1]

## NOTES:

1. NOTE DELETED
2. DIMENSION NOT AVAILABLE ON -026 POSITIONS.
3. DESIGNED IN ENGLISH.

TABLE 3- PCX OPTION				
POSITION	-PCX	"F"	"J"	"K"
-026	-PC4	1.616[41.05]	1.209[30.70]	.3505
	-PC8	1.931[49.05]	1.524[38.70]	.5080
-052	-PC4	2.456[62.38]	2.049[52.04]	.3505
	-PC8	2.771[70.38]	2.364[60.04]	.5080
-078	-PC4	3.296[83.72]	2.889[73.37]	.3505
	-PC8	3.611[91.72]	3.204[81.37]	.5080

F:\DWG\MISC\mktg\FOOTPRINT\QMSX-XXX-XX-X-XX-EM2-FOOTPRINT.SLDDRW

## PROPRIETARY NOTE

THIS DOCUMENT CONTAINS INFORMATION  
CONFIDENTIAL AND PROPRIETARY TO  
SAMTEC, INC. AND SHALL NOT BE REPRODUCED  
OR TRANSFERRED TO OTHER DOCUMENTS OR  
DISCLOSED TO OTHERS OR USED FOR ANY  
PURPOSE OTHER THAN THAT WHICH IT WAS  
OBTAINED WITHOUT THE EXPRESSED WRITTEN  
CONSENT OF SAMTEC, INC.

**samtec**

520 PARK EAST BLVD, NEW ALBANY, IN 47150  
PHONE: 812-944-6733 FAX: 812-948-5047  
e-Mail: info@SAMTEC.com code: 55322

FIGURE 3

QMSS-052-01-X-XX-EM2 STENCIL DESIGN SHOWN

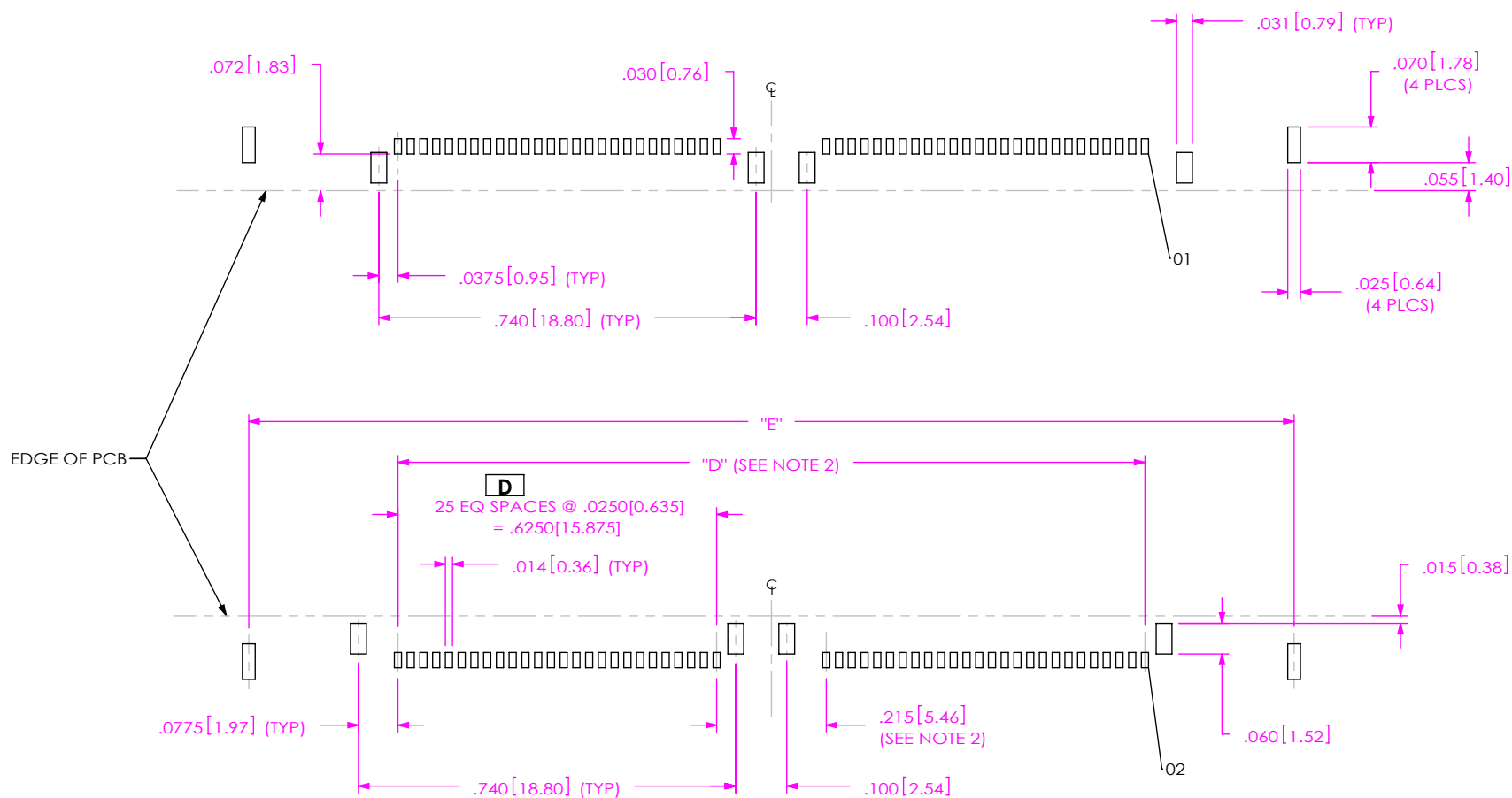


TABLE 2

POSITION	"D"	"E"
-026	---	1.210[30.73]
-052	1.465[37.21]	2.050[52.07]
-078	2.305[58.55]	2.890[73.41]
-104	3.145[79.88]	3.730[94.74]
* -130	3.985[101.22]	4.570[116.08]

\* = NOT TOOLED

## NOTES:

- NOTE DELETED
- DIMENSION NOT AVAILABLE ON -026 POSITIONS.
- DESIGNED IN ENGLISH.
- STENCIL TO BE .0060[.152] THICK.

## PROPRIETARY NOTE

THIS DOCUMENT CONTAINS INFORMATION  
CONFIDENTIAL AND PROPRIETARY TO  
SAMTEC, INC. AND SHALL NOT BE REPRODUCED  
OR TRANSFERRED TO OTHER DOCUMENTS OR  
DISCLOSED TO OTHERS OR USED FOR ANY  
PURPOSE OTHER THAN THAT WHICH IT WAS  
OBTAINED WITHOUT THE EXPRESSED WRITTEN  
CONSENT OF SAMTEC, INC.

**samtec**

520 PARK EAST BLVD, NEW ALBANY, IN 47150  
PHONE: 812-944-6733 FAX: 812-948-5047  
e-Mail: info@SAMTEC.com code: 55322

FIGURE 4

QMSS-052-01-X-XX-EM2-PC4 STENCIL DESIGN SHOWN  
[DIFFERENT AS SHOWN, OTHERWISE SAME AS FIGURE 3]

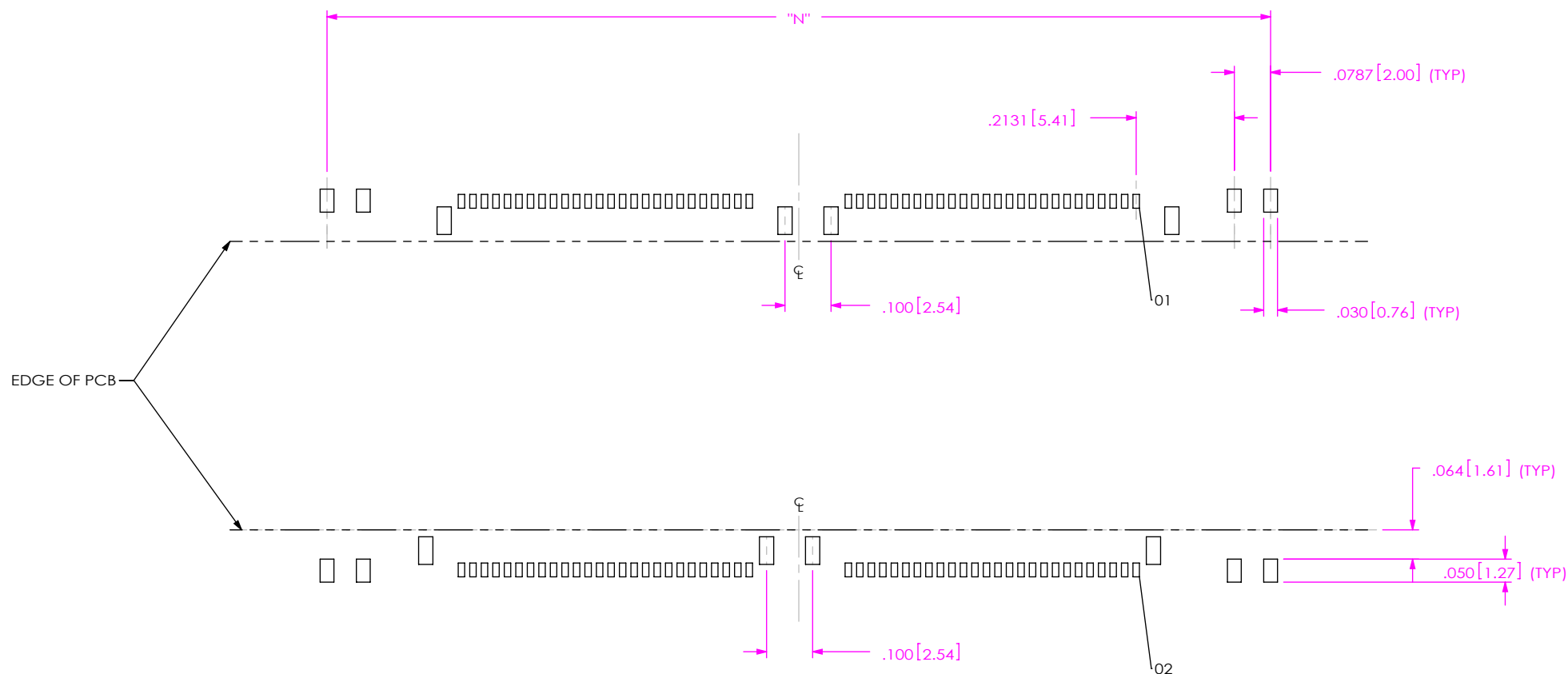


TABLE 4- PCX OPTION

POSITION	-PCX	"N"
-026	-PC4	1.209[30.70]
	-PC8	1.524[38.70]
-052	-PC4	2.049[52.04]
	-PC8	2.364[60.04]
-078	-PC4	2.889[73.37]
	-PC8	3.204[81.37]

## NOTES:

1. NOTE DELETED.
2. DIMENSION NOT AVAILABLE ON -026 POSITIONS.
3. DESIGNED IN ENGLISH.
4. STENCIL TO BE .0060[.152] THICK.

## PROPRIETARY NOTE

THIS DOCUMENT CONTAINS INFORMATION  
CONFIDENTIAL AND PROPRIETARY TO  
SAMTEC, INC. AND SHALL NOT BE REPRODUCED  
OR TRANSFERRED TO OTHER DOCUMENTS OR  
DISCLOSED TO OTHERS OR USED FOR ANY  
PURPOSE OTHER THAN THAT WHICH IT WAS  
OBTAINED WITHOUT THE EXPRESSED WRITTEN  
CONSENT OF SAMTEC, INC.

**samtec**

520 PARK EAST BLVD, NEW ALBANY, IN 47150  
PHONE: 812-944-6733 FAX: 812-948-5047  
e-Mail: info@SAMTEC.com code: 55322