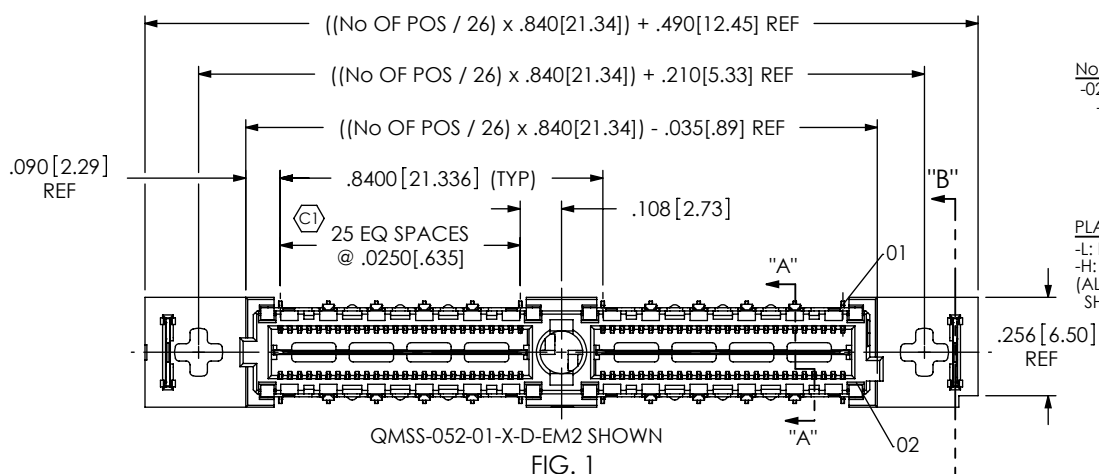


DO NOT  
SCALE FROM  
THIS PRINT



**QMSS-XXX-XX-X-D-EM2-XXX-XX**

**No OF POSITIONS**  
-026, -052, -078,  
-104, \* -130  
(PER ROW)

**LEAD STYLE**  
-01

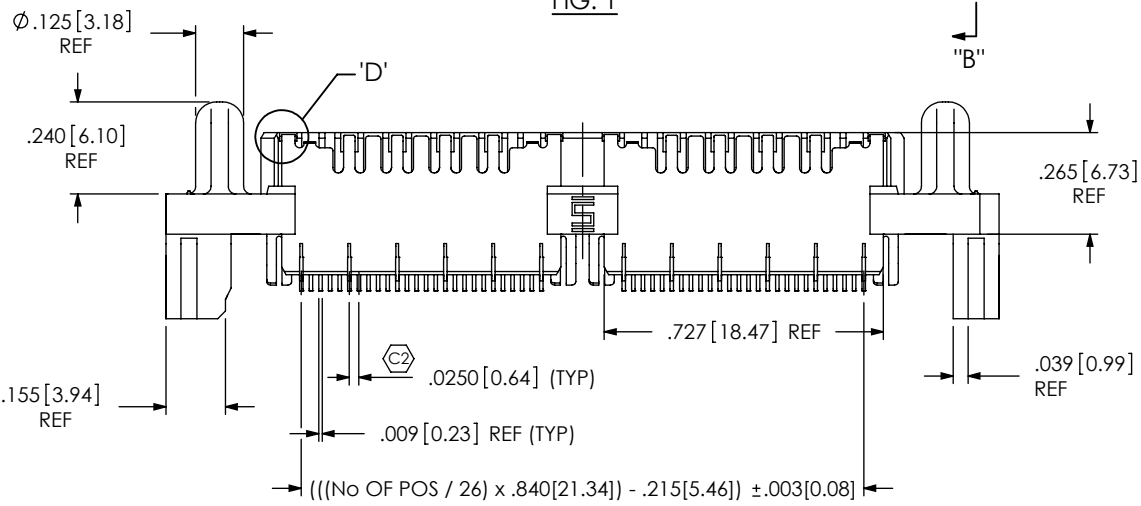
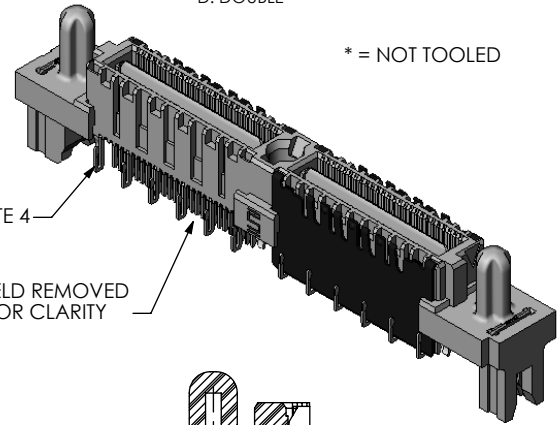
**PLATING SPECIFICATION**  
-L: LIGHT GOLD (USE T-1M25-01-L)  
-H: HEAVY GOLD (USE T-1M25-01-H)  
(ALL PLATING STYLES USE  
SH1-E2-L, T-1G22-01-G & WT-17-GF)

**OPTIONS**  
-TR: TAPE & REEL PACKAGING  
(-026 & -052 WITH NO OPTIONS)  
(-026 & -052 WITH -PC4)  
(-026 WITH -PC8)

**POWER COMBO OPTION**  
(USE T-1S13-13-S-2)  
-PC4: 4 POWER POS PER END  
-PC8: 8 POWER POS PER END  
(SEE FIG. 2, SHEET 3)  
[-PCX AVAILABLE ON POSITIONS  
-026, -052 & -078 ONLY]

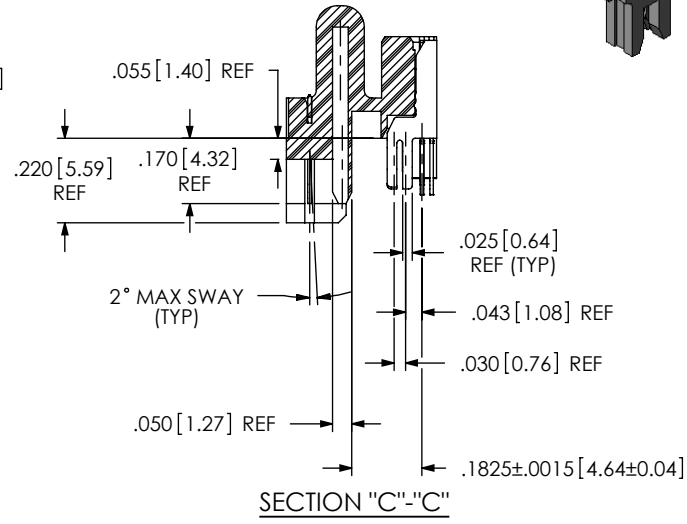
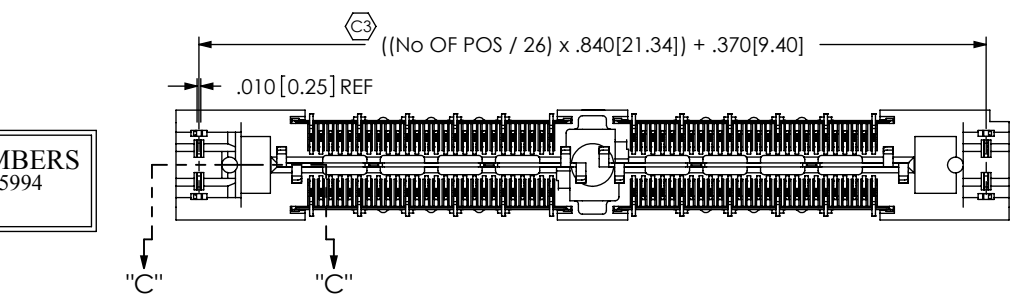
**-EM2: EDGE MOUNT**

**ROW SPECIFICATION**  
-D: DOUBLE



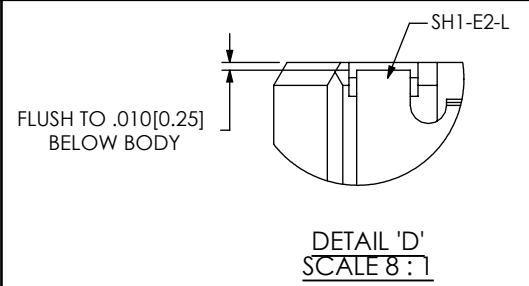
SEE NOTE 4

SHIELD REMOVED  
FOR CLARITY



**PATENT NUMBERS**  
6739884 / 7165994  
7121849

- NOTES:
1. © REPRESENTS A CRITICAL DIMENSION.
  2. BURR ALLOWANCE: .0015[0.038] MAX.
  3. MINIMUM PUSHOUT FORCE: SIGNAL: .5 LB, SHIELD/GROUND & WELD TAB: 1 LB.
  4. TERMINALS IN THE FIRST POSITION OF EACH BANK AND EVERY FIFTH POSITION AFTER THAT WILL NOT BE SHEARED.
  5. MAX VARIANCE OF .002[0.05].
  6. DIMENSION APPLIES TO GROUND PLANE & SIGNAL PINS.
  7. PARTS TO BE PACKAGED IN TRAYS AS STANDARD.



UNLESS OTHERWISE SPECIFIED,  
DIMENSIONS ARE IN INCHES.  
TOLERANCES ARE:

DECIMALS	ANGLES
.XX: ±.01 [.3]	2°
.XXX: ±.005 [.13]	
.XXXX: ±.0020 [.051]	

**PROPRIETARY NOTE**  
THIS DOCUMENT CONTAINS INFORMATION  
CONFIDENTIAL AND PROPRIETARY TO  
SAMTEC, INC. AND SHALL NOT BE REPRODUCED  
OR TRANSFERRED TO OTHER DOCUMENTS OR  
DISCLOSED TO OTHERS OR USED FOR ANY  
PURPOSE OTHER THAN THAT WHICH IT WAS  
OBTAINED WITHOUT THE EXPRESSED WRITTEN  
CONSENT OF SAMTEC, INC.

**MATERIAL:** DO NOT SCALE DRAWING SHEET SCALE: 2:1  
INSULATOR: LCP, COLOR: BLACK  
TERMINAL, GROUND PLANE,  
& SHIELD: PHOS BRONZE

**samtec**

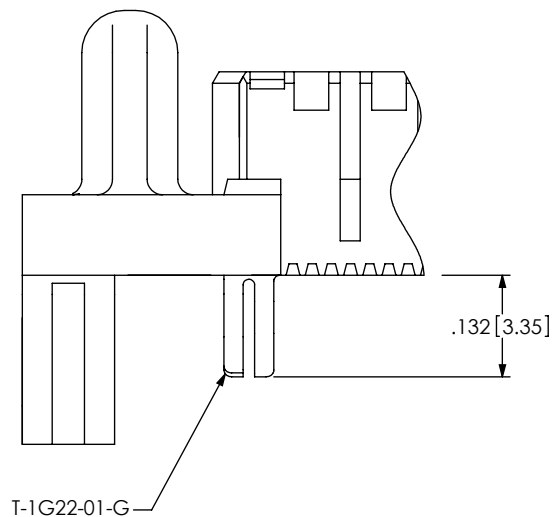
520 PARK EAST BLVD, NEW ALBANY, IN 47150  
PHONE: 812-944-6733 FAX: 812-948-5047  
e-Mail: info@SAMTEC.com code: 55322

DESCRIPTION:  
.635mm DOUBLE ROW SHIELDED EDGE MOUNT TERMINAL STRIP

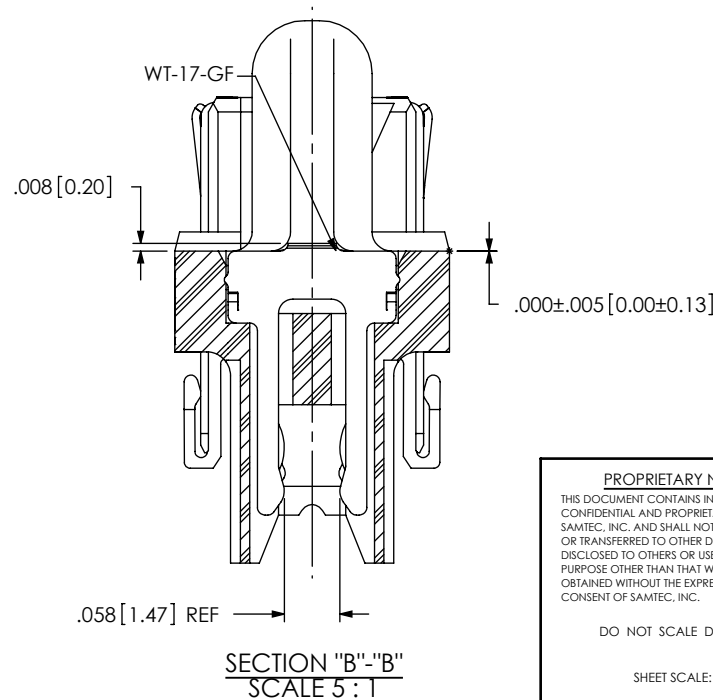
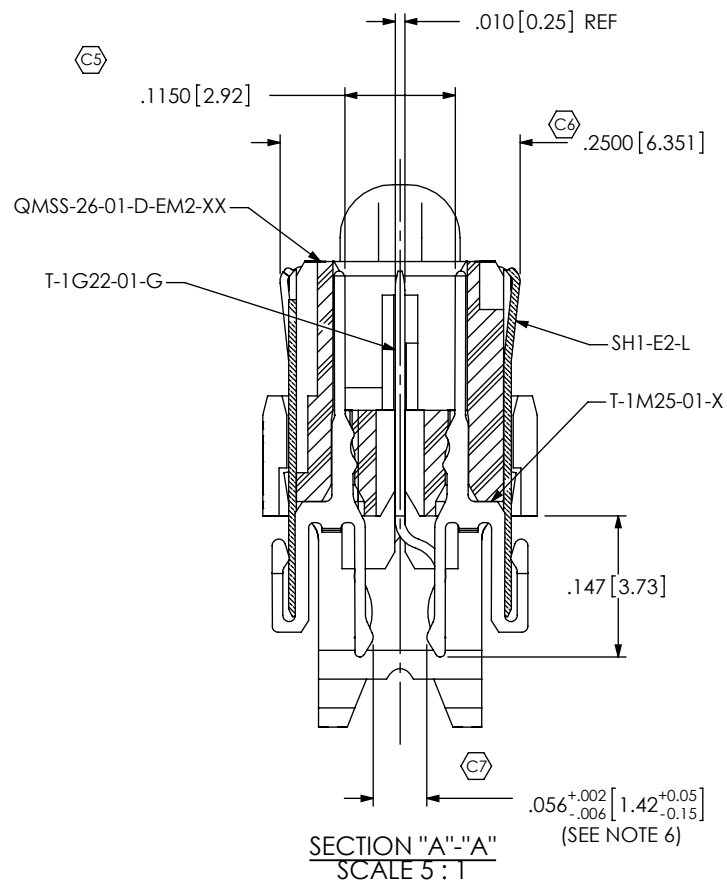
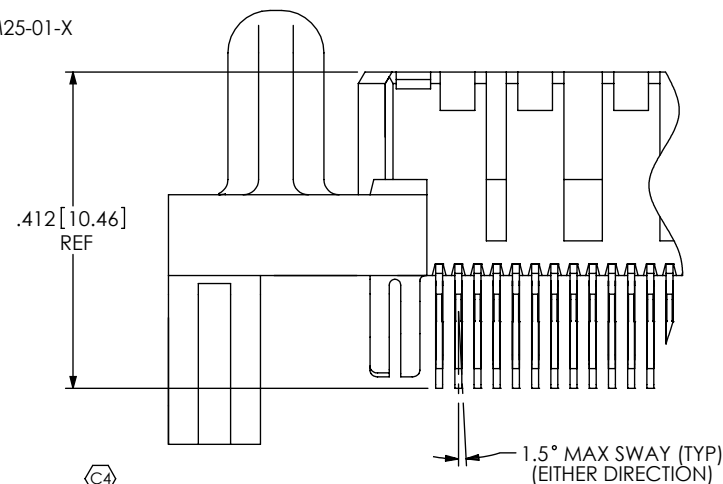
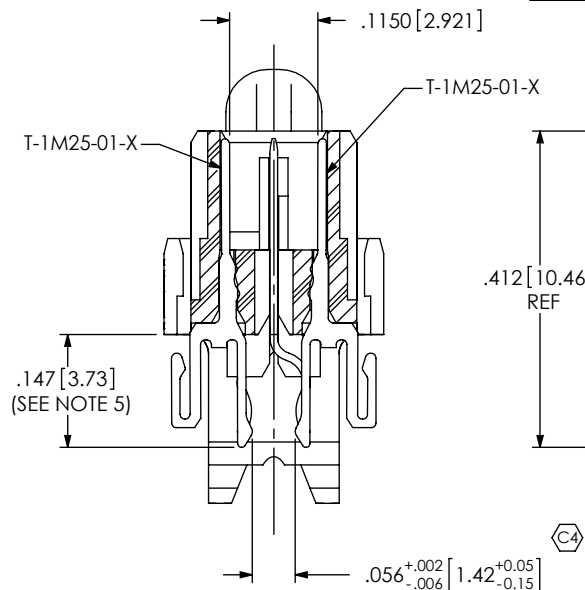
DWG. NO.  
**QMSS-XXX-XX-X-D-EM2-XXX-XX**

BY: BRATCHER 11/22/2002 SHEET 1 OF 3

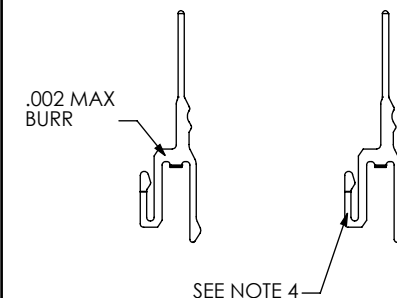
IN-PROCESS 1



IN-PROCESS 2



TERMINAL DETAILS



PROPRIETARY NOTE

THIS DOCUMENT CONTAINS INFORMATION  
CONFIDENTIAL AND PROPRIETARY TO  
SAMTEC, INC. AND SHALL NOT BE REPRODUCED  
OR TRANSFERRED TO OTHER DOCUMENTS OR  
DISCLOSED TO OTHERS OR USED FOR ANY  
PURPOSE OTHER THAN THAT WHICH IT WAS  
OBTAINED WITHOUT THE EXPRESSED WRITTEN  
CONSENT OF SAMTEC, INC.

DO NOT SCALE DRAWING

SHEET SCALE: 1:0.4

**samtec**

520 PARK EAST BLVD, NEW ALBANY, IN 47150  
PHONE: 812-944-6733 FAX: 812-948-5047  
e-Mail: info@SAMTEC.com code: 55322

DESCRIPTION:  
.635mm DOUBLE ROW SHIELDED EDGE MOUNT TERMINAL STRIP

DWG. NO.  
QMSS-XXX-XX-X-D-EM2-XXX-XX

BY: BRATCHER 11/22/2002 SHEET 2 OF 3

FIG. 2 -PCX OPTION  
QMSS-052-01-X-D-EM2-PC4 SHOWN  
[DIFFERENT AS SHOWN, OTHERWISE SAME AS FIG. 1]  
[AVAILABLE ON -026, -052 & -078 POSITIONS ONLY]

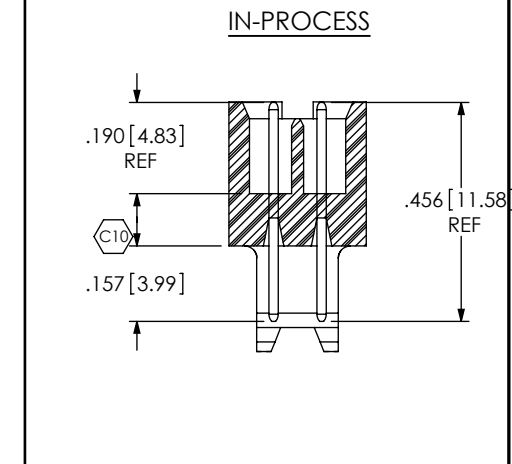
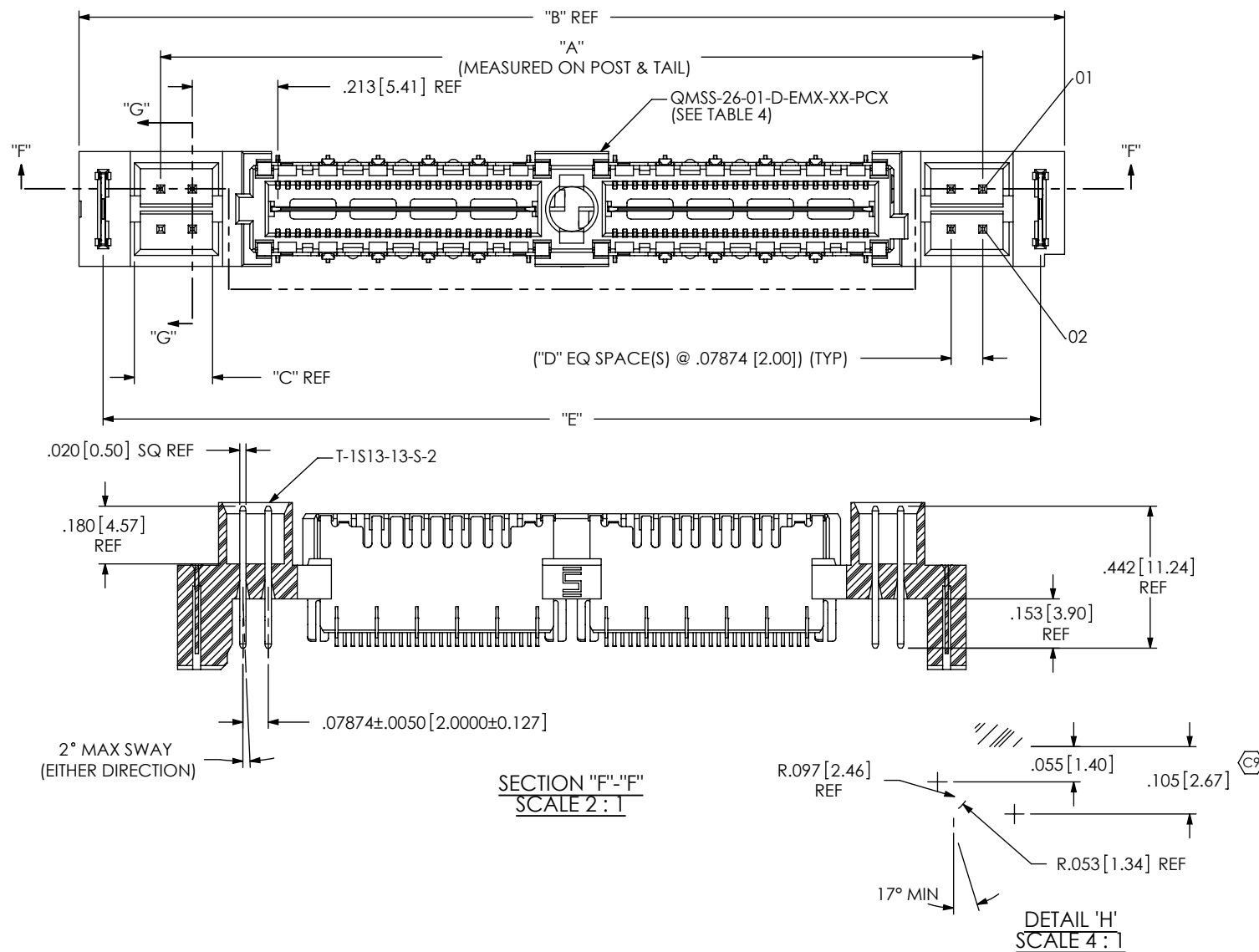


TABLE 1						
ASSEMBLY	USE BODY	"A"	"B"	"C"	"D"	"E"
QMSS-026-01-X-D-EM2-PC4	QMSS-26-01-D-EM2-XX-PC4	1.209 [30.70]	1.616 [41.05]	.180[4.57]	1	1.496[38.00]
QMSS-026-01-X-D-EM2-PC8	QMSS-26-01-D-EM2-XX-PC8	1.524 [38.70]	1.931 [49.05]	.337[8.57]	3	1.811[46.00]
QMSS-052-01-X-D-EM2-PC4	QMSS-26-02-D-EM2-XX-PC4	2.049 [52.04]	2.456 [62.38]	.180[4.57]	1	2.336[59.34]
QMSS-052-01-X-D-EM2-PC8	QMSS-26-02-D-EM2-XX-PC8	2.364 [60.04]	2.771 [70.38]	.337[8.57]	3	2.651[67.34]
QMSS-078-01-X-D-EM2-PC4	QMSS-26-03-D-EM2-XX-PC4	2.889 [73.37]	3.296 [83.72]	.180[4.57]	1	3.176[80.67]
QMSS-078-01-X-D-EM2-PC8	QMSS-26-03-D-EM2-XX-PC8	3.204 [81.37]	3.611 [91.72]	.337[8.57]	3	3.491[88.67]

PROPRIETARY NOTE  
THIS DOCUMENT CONTAINS INFORMATION  
CONFIDENTIAL AND PROPRIETARY TO  
SAMTEC, INC. AND SHALL NOT BE REPRODUCED  
OR TRANSFERRED TO OTHER DOCUMENTS OR  
DISCLOSED TO OTHERS OR USED FOR ANY  
PURPOSE OTHER THAN THAT WHICH IT WAS  
OBTAINED WITHOUT THE EXPRESSED WRITTEN  
CONSENT OF SAMTEC, INC.

DO NOT SCALE DRAWING

SHEET SCALE: 1:0.4

**samtec**

520 PARK EAST BLVD, NEW ALBANY, IN 47150  
PHONE: 812-944-6733 FAX: 812-948-5047  
e-Mail: info@SAMTEC.com code: 55322

DESCRIPTION:  
.635mm DOUBLE ROW SHIELDED EDGE MOUNT TERMINAL STRIP

DWG. NO.  
QMSS-XXX-XX-X-D-EM2-XXX-XX

BY: BRATCHER 11/22/2002 SHEET 3 OF 3