

DO NOT SCALE FROM THIS PRINT

**Pb** THIS PRODUCT MANUFACTURED WITH LEAD-FREE PROCESSING

DESIGNED & DIMENSIONED IN MILLIMETERS [INCHES]

292-P-C-XX-ST-CXX

GENDER  
-P: PLUG

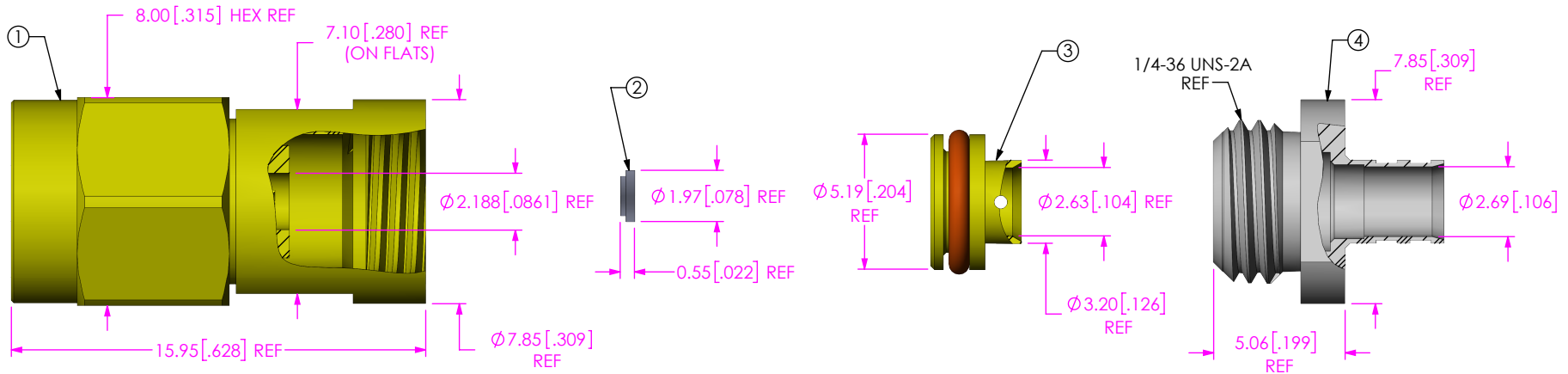
TYPE  
-C: CABLE

TERMINATION  
-CS3: MWC-2350-01 CABLE

ORIENTATION  
-ST: STRAIGHT

PLATING SPECIFICATION  
-HP: 30μ" GOLD CENTER CONTACT, PASSIVATED OUTER CONTACT, 3μ" GOLD CABLE BODY (SEE TABLE 1)

| ITEM | COMPONENT      | -HP                     |
|------|----------------|-------------------------|
| 1    | SUB ASSEMBLY   | SUB-292PS-P-C-HP-ST-CS3 |
| 2    | INSULATOR      | 292-ST-INS-CS3          |
| 3    | SUB CABLE BODY | SUB-292-C-F-ST-CS3-CBDY |
| 4    | BODY           | 292PS-C-P-ST-CA7-BDY    |



NOTES:

- Ⓢ REPRESENTS A CRITICAL DIMENSION.
- PRODUCT TO BE PACKAGED PER PACKAGING STANDARD CO-HD-WI-3040-M. TRAY: TY-SMA001-1 COVER: TY-SMA001-2 100 PARTS PER TRAY (1 PART PER POCKET)
- SUB CABLE BODY (ITEM 3) AND INSULATOR (ITEM 2) TO BE PACKAGED SEPARATELY.
- BODY (ITEM 4) TO BE INSTALLED ON SUB ASSEMBLY (ITEM 1), LOCKED BY HAND (2-3 IN-LBS RECOMMENDED).

UNLESS OTHERWISE SPECIFIED, DIMENSIONS ARE IN MILLIMETERS.

TOLERANCES ARE:

|                      |        |
|----------------------|--------|
| DECIMALS             | ANGLES |
| X.X: ±0.3 [01]       | 5°     |
| X.XX: ±0.13 [005]    |        |
| X.XXX: ±0.051 [0020] |        |

**PROPRIETARY NOTE**

THIS DOCUMENT CONTAINS CONFIDENTIAL AND PROPRIETARY INFORMATION AND ALL DESIGN, MANUFACTURING, REPRODUCTION, USE, PATENT RIGHTS AND SALES RIGHTS ARE EXPRESSLY RESERVED BY SAMTEC, INC. THIS DOCUMENT SHALL NOT BE DISCLOSED, IN WHOLE OR PART, TO ANY UNAUTHORIZED PERSON OR ENTITY NOR REPRODUCED, TRANSFERRED OR INCORPORATED IN ANY OTHER PROJECT IN ANY MANNER WITHOUT THE EXPRESS WRITTEN CONSENT OF SAMTEC, INC.



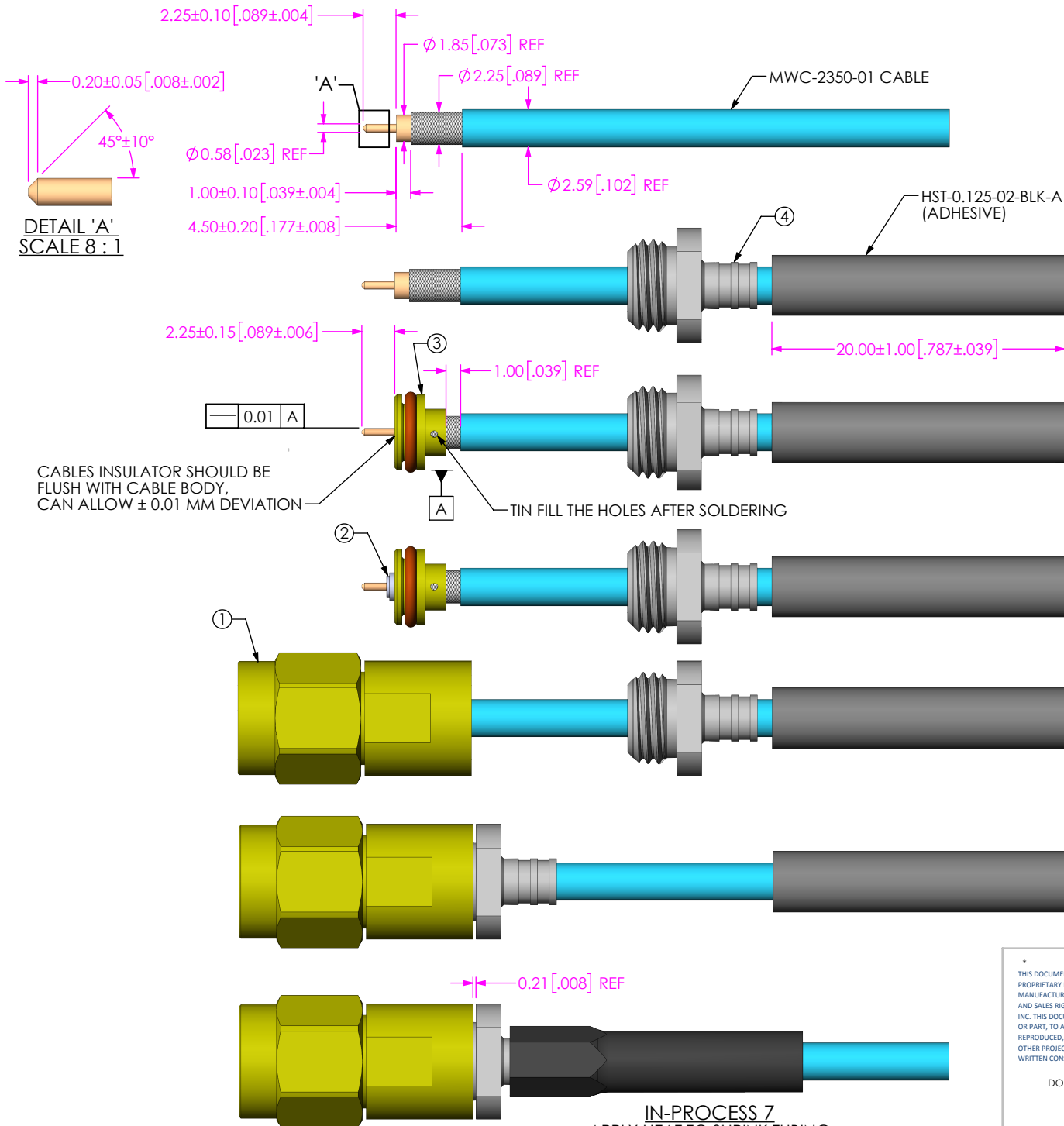
520 PARK EAST BLVD, NEW ALBANY, IN 47150  
PHONE: 812-944-6733 FAX: 812-948-5047  
e-Mail info@SAMTEC.com code 55322

MATERIAL: DO NOT SCALE DRAWING SHEET SCALE: 4:1  
SHELL, INSERT & CABLE BODY: BRASS OR STAINLESS STEEL  
REAR SOCKET: BeCu  
INNER PINS, NUT: BRASS  
INSULATOR: PCTFE OR ULTEM-1000  
GASKET: SILICONE  
C-RING: STAINLESS STEEL  
CBDY INST: PHOS BRONZE

DESCRIPTION: 2.92 STRAIGHT PLUG FOR 23 AWG CABLE

DWG. NO. 292-P-C-XX-ST-CXX

BY: ALVIN W 09/14/2012 SHEET 1 OF 2



**IN PROCESS 1**  
STRIPPING AND CHAMFER  
(NO TINNED)

**IN PROCESS 2**  
ADD BODY & HEAT SHRINK

**IN PROCESS 3**  
ADD SUB CABLE BODY  
SOLDER CABLE TO CABLE BODY

**IN-PROCESS 4**  
ADD INSULATOR

**IN-PROCESS 5**  
ADD SUB ASSEMBLY

**IN-PROCESS 6**  
TORQUE BODY TO SHELL, 20~30 IN-LBS

**IN-PROCESS 7**  
APPLY HEAT TO SHRINK TUBING

CABLES INSULATOR SHOULD BE FLUSH WITH CABLE BODY, CAN ALLOW ± 0.01 MM DEVIATION

TIN FILL THE HOLES AFTER SOLDERING

**PROPRIETARY NOTE**  
THIS DOCUMENT CONTAINS CONFIDENTIAL AND PROPRIETARY INFORMATION AND ALL DESIGN, MANUFACTURING, REPRODUCTION, USE, PATENT RIGHTS AND SALES RIGHTS ARE EXPRESSLY RESERVED BY SAMTEC, INC. THIS DOCUMENT SHALL NOT BE DISCLOSED, IN WHOLE OR PART, TO ANY UNAUTHORIZED PERSON OR ENTITY NOR REPRODUCED, TRANSFERRED OR INCORPORATED IN ANY OTHER PROJECT IN ANY MANNER WITHOUT THE EXPRESS WRITTEN CONSENT OF SAMTEC, INC.

DO NOT SCALE DRAWING

SHEET SCALE: 5:2



520 PARK EAST BLVD, NEW ALBANY, IN 47150  
PHONE: 812-944-6733 FAX: 812-948-5047  
e-Mail info@SAMTEC.com code 55322

DESCRIPTION:  
2.92 STRAIGHT PLUG FOR 23 AWG CABLE

DWG. NO.  
**292-P-C-XX-ST-CXX**

BY: ALVIN W 09/14/2012 SHEET 2 OF 2