

**DESIGNED AND DIMENSIONED IN INCHES[MILLIMETERS]
ALL DIMENSIONS REFERENCE EXCEPT AS SHOWN**

DO NOT
SCALE FROM
THIS PRINT

90T-J-P-XX-RA-CM

SERIES
-90T: 60 TO 90 GHZ
THREADED
WAVEGUIDE

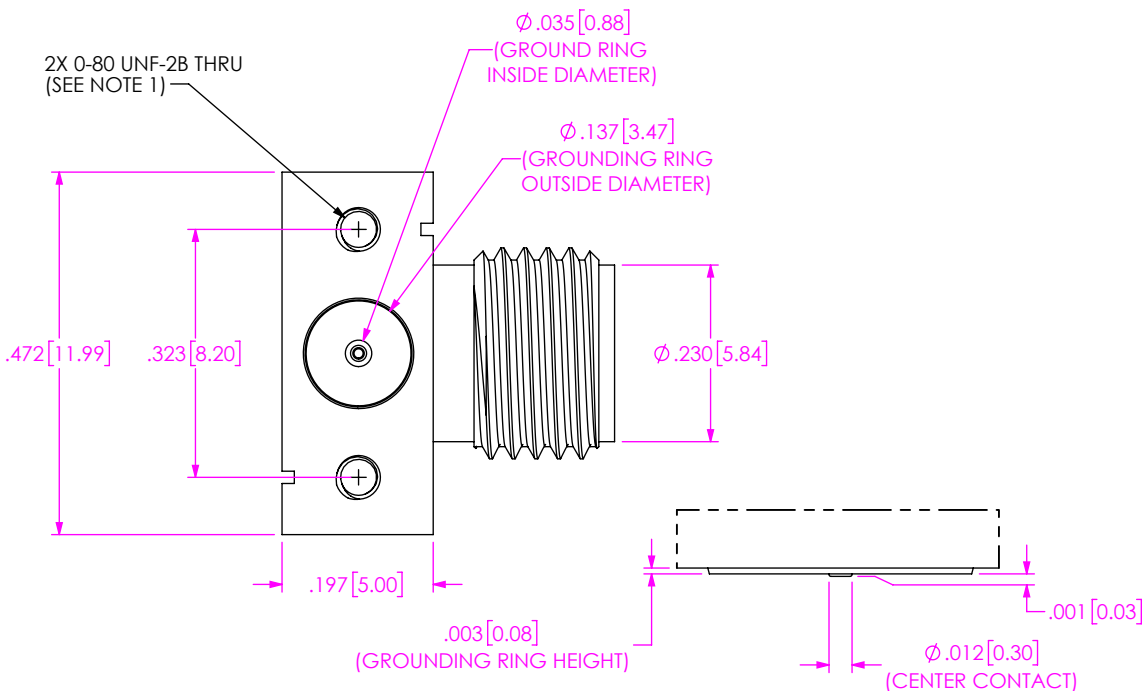
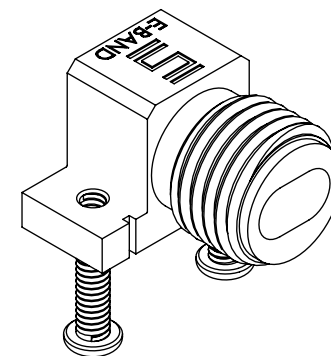
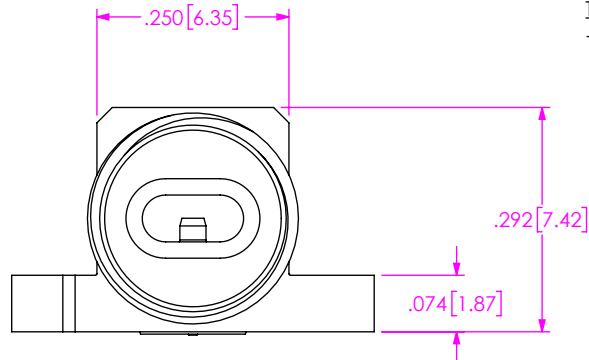
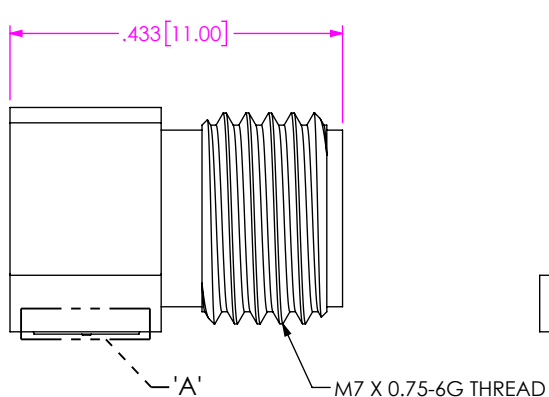
GENDER
-J: JACK

TYPE
-P: PCB

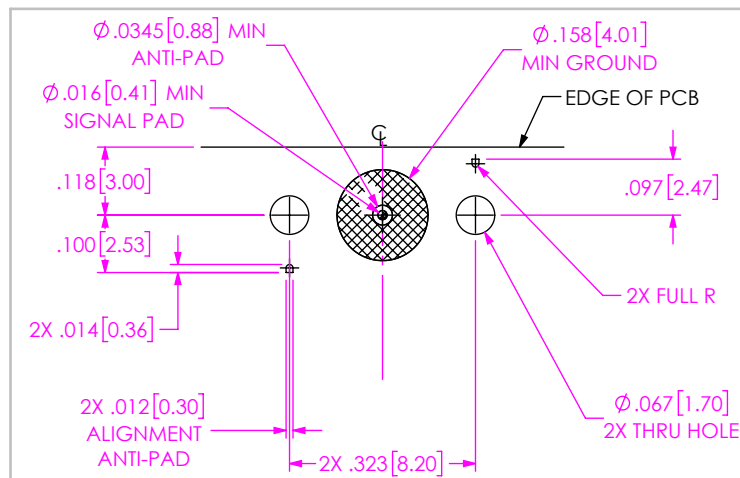
TERMINATION
-CM: COMPRESSION
MOUNT STRIPLINE

ORIENTATION
-RA: RIGHT ANGLE

FINISH
-EE: 50µ" EXTRA HEAVY GOLD
CENTER CONTACT, 50µ" EXTRA
HEAVY GOLD OUTER BODY



**DETAIL 'A'
SCALE 10 : 1**



RECOMMENDED PCB LAYOUT

NOTES:

1. RECOMMENDED MOUNTING TORQUE 0.5-0.8 INCH POUNDS.
2. THIS IS A GENERAL FOOTPRINT AND IS NOT OPTIMIZED FOR ELECTRICAL PERFORMANCE, CONTACT SIG@SAMTEC.COM FOR ASSISTANCE WITH ELECTRICAL LAYOUT.

PROPRIETARY NOTE

THIS DOCUMENT CONTAINS CONFIDENTIAL AND PROPRIETARY INFORMATION AND ALL DESIGN, MANUFACTURING, REPRODUCTION, USE, PATENT RIGHTS AND SALES RIGHTS ARE EXPRESSLY RESERVED BY SAMTEC, INC. THIS DOCUMENT SHALL NOT BE DISCLOSED, IN WHOLE OR PART, TO ANY UNAUTHORIZED PERSON OR ENTITY NOR REPRODUCED, TRANSFERRED OR INCORPORATED IN ANY OTHER PROJECT IN ANY MANNER WITHOUT THE EXPRESS WRITTEN CONSENT OF SAMTEC, INC.



520 PARK EAST BLVD, NEW ALBANY, IN 47150
PHONE: 812-944-6733 FAX: 812-948-5047
e-Mail info@SAMTEC.com code 55322

DO NOT SCALE DRAWING
SHEET SCALE: 4:1

DESCRIPTION: WAVEGUIDE ASSEMBLY

DWG. NO. 90T-J-P-XX-RA-CM

BY: E.OLSEN 02/29/2024 SHEET 1 OF 1

MATERIAL:
BODY & BUSHING: BRASS
ANTENNA: BERYLLIUM COPPER
BEAD: PEEK
SCREW: STAINLESS STEEL

FINISH:
BODY, BUSHING & ANTENNA:
50µ" MIN GOLD OVER 50µ" MIN NICKEL PLATE