

**Pb** THIS PRODUCT MANUFACTURED WITH LEAD-FREE PROCESSING

**DESIGNED & DIMENSIONED IN MILLIMETERS [INCHES]**

ADP5-01SJX-10SJX

DO NOT SCALE FROM THIS PRINT

TABLE 1			
ITEM	COMPONENT	9	7
1	BODY	ADP5-01SJG-10SJG-BDY	ADP5-01SJF-10SJF-BDY
2	INSULATOR	ADP5-01SJ-10SJ-INS	ADP5-01SJ-10SJ-INS
3	SOCKET	ADP5-01SJH-10SJH-SKT	ADP5-01SJG-10SJG-SKT

IMPEDANCE  
-5: 50 OHM

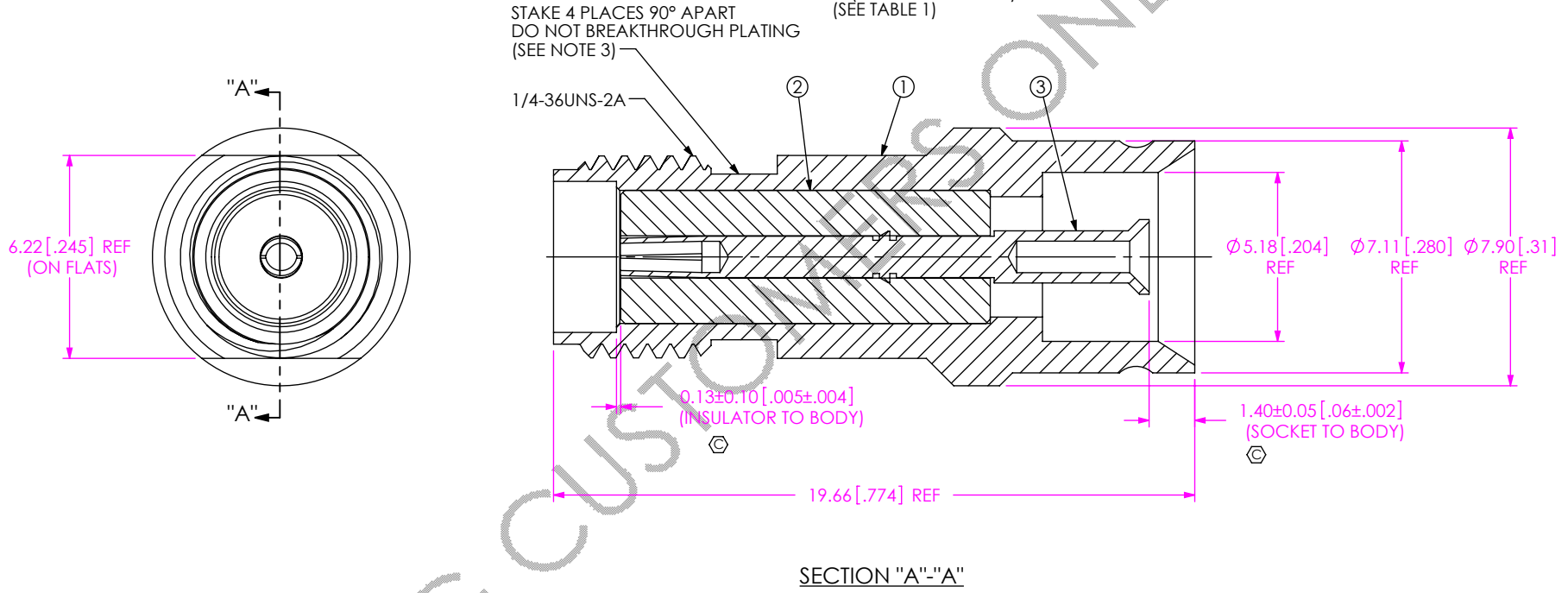
END 1  
01SJ: SMA STRAIGHT JACK

PLATING SPECIFICATION  
9: 30µ" GOLD CENTER CONTACT, (SEE TABLE 1, ITEM 3)  
10µ" GOLD OUTER CONTACT (SEE TABLE 1, ITEM 1)

END 2  
10SJ: AFI STRAIGHT JACK

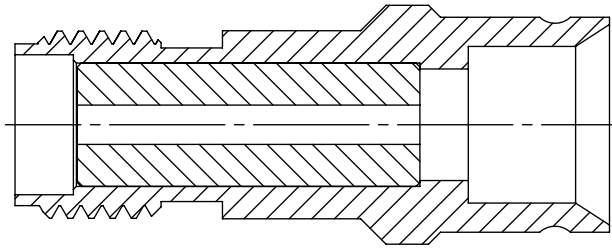
PLATING SPECIFICATION  
9: 30µ" GOLD CENTER CONTACT, (SEE TABLE 1, ITEM 3)  
10µ" GOLD OUTER CONTACT (SEE TABLE 1, ITEM 1)

7: 10µ" GOLD CENTER CONTACT, (SEE TABLE 1, ITEM 3)  
5µ" GOLD OUTER CONTACT (SEE TABLE 1, ITEM 1)

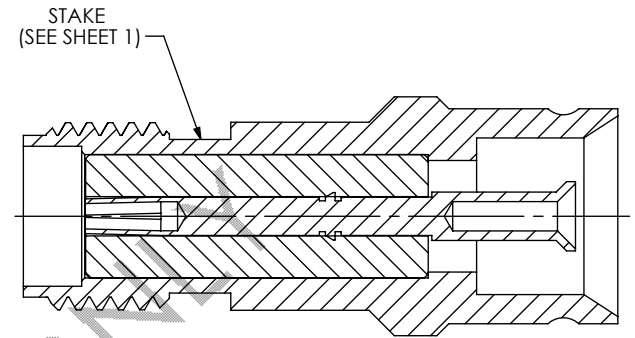


- NOTES:
- ⊕ REPRESENTS A CRITICAL DIMENSION.
  - PRODUCT TO BE PACKAGED PER PACKING STANDARD CO-HD-WI-3040-M. TRAY: TY-SMA001-1 COVER: TY-SMA001-2 100 PARTS PER TRAY (1 PART PER POCKET)
  - INSULATOR AND CONTACT MUST WITHSTAND 6 LBS, AXIAL FORCE IN EITHER DIRECTION AFTER ASSEMBLY.

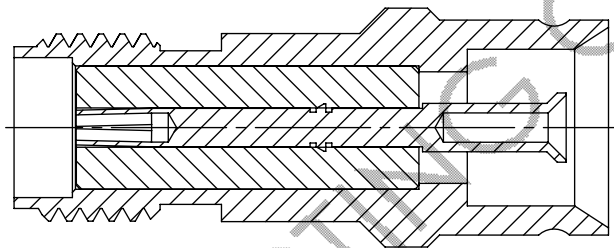
<p>UNLESS OTHERWISE SPECIFIED, DIMENSIONS ARE IN MILLIMETERS.</p> <p>TOLERANCES ARE:</p> <table border="0"> <tr> <td>DECIMALS</td> <td>ANGLES</td> </tr> <tr> <td>X.X: ±0.3 [01]</td> <td>5°</td> </tr> <tr> <td>X.XX: ±0.13 [005]</td> <td></td> </tr> <tr> <td>X.XXX: ±0.051 [0020]</td> <td></td> </tr> </table>	DECIMALS	ANGLES	X.X: ±0.3 [01]	5°	X.XX: ±0.13 [005]		X.XXX: ±0.051 [0020]		<p><b>PROPRIETARY NOTE</b></p> <p>THIS DOCUMENT CONTAINS CONFIDENTIAL AND PROPRIETARY INFORMATION AND ALL DESIGN, MANUFACTURING, REPRODUCTION, USE, PATENT RIGHTS AND SALES RIGHTS ARE EXPRESSLY RESERVED BY SAMTEC, INC. THIS DOCUMENT SHALL NOT BE DISCLOSED, IN WHOLE OR PART, TO ANY UNAUTHORIZED PERSON OR ENTITY NOR REPRODUCED, TRANSFERRED OR INCORPORATED IN ANY OTHER PROJECT IN ANY MANNER WITHOUT THE EXPRESS WRITTEN CONSENT OF SAMTEC, INC.</p>	<p>520 PARK EAST BLVD, NEW ALBANY, IN 47150 PHONE: 812-944-6733 FAX: 812-948-5047 e-Mail info@SAMTEC.com code 55322</p>
	DECIMALS	ANGLES								
X.X: ±0.3 [01]	5°									
X.XX: ±0.13 [005]										
X.XXX: ±0.051 [0020]										
<p>MATERIAL: DO NOT SCALE DRAWING SHEET SCALE: 5:1</p> <p>BODY: BRASS SOCKET: BeCu INSULATOR: PTFE</p>	<p>DESCRIPTION: SMA JACK TO AFI JACK ADAPTER, 50 OHM, ASSEMBLY</p> <p>DWG. NO. <b>ADP5-01SJX-10SJX</b></p> <p>BY: EMMA CHEN 05/17/2012 SHEET 1 OF 2</p>									



IN-PROCESS 1  
INSERT INSULATOR



IN-PROCESS 3  
STAKE



IN-PROCESS 2  
INSERT SOCKET

**PROPRIETARY NOTE**  
 THIS DOCUMENT CONTAINS CONFIDENTIAL AND PROPRIETARY INFORMATION AND ALL DESIGN, MANUFACTURING, REPRODUCTION, USE, PATENT RIGHTS AND SALES RIGHTS ARE EXPRESSLY RESERVED BY SAMTEC, INC. THIS DOCUMENT SHALL NOT BE DISCLOSED, IN WHOLE OR PART, TO ANY UNAUTHORIZED PERSON OR ENTITY NOR REPRODUCED, TRANSFERRED OR INCORPORATED IN ANY OTHER PROJECT IN ANY MANNER WITHOUT THE EXPRESS WRITTEN CONSENT OF SAMTEC, INC.

DO NOT SCALE DRAWING

SHEET SCALE: 4:1



520 PARK EAST BLVD, NEW ALBANY, IN 47150  
 PHONE: 812-944-6733 FAX: 812-948-5047  
 e-Mail info@SAMTEC.com code 55322

DESCRIPTION:  
 SMA JACK TO AFI JACK ADAPTER, 50 OHM, ASSEMBLY

DWG. NO. **ADP5-01SJX-10SJX**

BY: EMMA CHEN 05/17/2012 SHEET 2 OF 2