

**Pb** THIS PRODUCT MANUFACTURED WITH LEAD-FREE PROCESSING

**DESIGNED & DIMENSIONED IN MILLIMETERS [INCHES]**

ADP5-01SJX-10SPX

DO NOT SCALE FROM THIS PRINT

TABLE 1			
ITEM	COMPONENT	9	7
1	BODY	ADP5-01SJG-10SPG-BDY	ADP5-01SJF-10SPF-BDY
2	INSULATOR	ADP5-01SJ-10SJHNS	ADP5-01SJ-10SJ-INS
3	SOCKET	ADP5-01SJH-10SJH-SKT	ADP5-01SJG-10SJG-SKT
4	SHELL	ADP5-01SJN-10SPN-SHL	ADP5-01SJN-10SPN-SHL
5	BULLET	AFI-P-B-HG-ST-0914M	AFI-P-B-HG-ST-0914M

IMPEDANCE  
-5: 50 OHM

01SJ: SMA STRAIGHT JACK

END 1

PLATING SPECIFICATION  
9: 30μ" GOLD CENTER CONTACT, (SEE TABLE 1, ITEM 3)  
10μ" GOLD OUTER CONTACT (SEE TABLE 1, ITEM 1)

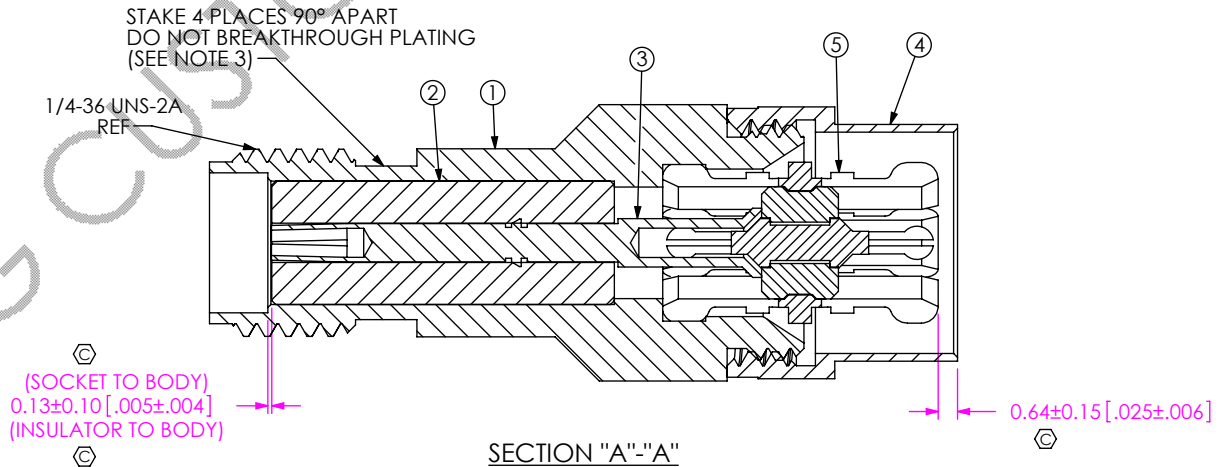
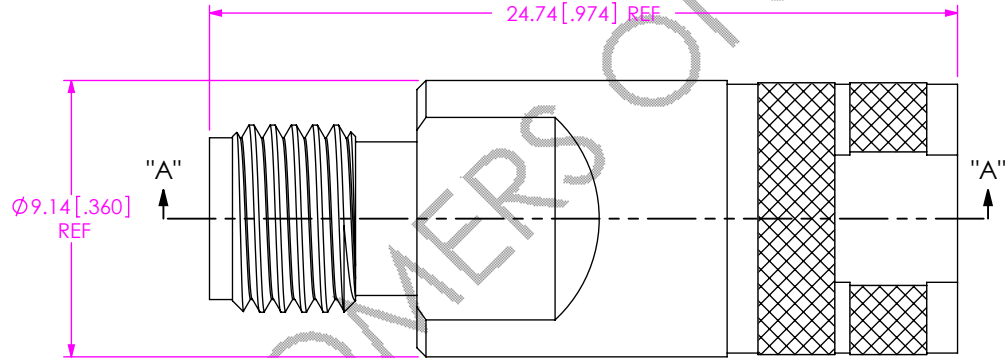
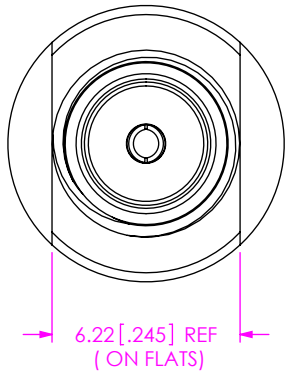
7: 10μ" GOLD CENTER CONTACT, (SEE TABLE 1, ITEM 3)  
5μ" GOLD OUTER CONTACT (SEE TABLE 1, ITEM 1)

END 2

10SP: AFI STRAIGHT PLUG

PLATING SPECIFICATION  
9: 30μ" GOLD CENTER CONTACT, (SEE TABLE 1, ITEM 3)  
10μ" GOLD OUTER CONTACT (SEE TABLE 1, ITEM 1)

7: 10μ" GOLD CENTER CONTACT, (SEE TABLE 1, ITEM 3)  
5μ" GOLD OUTER CONTACT (SEE TABLE 1, ITEM 1)



NOTES:

- ⊙ REPRESENTS A CRITICAL DIMENSION.
- PRODUCT TO BE PACKAGED PER PACKING STANDARD CO-HD-WI-3040-M. TRAY: TY-BNC002-1 COVER: TY-BNC002-2 72 PARTS PER TRAY (2 PARTS PER POCKET)
- INSULATOR AND CONTACT MUST WITHSTAND 6 LBS. AXIAL FORCE IN EITHER DIRECTION AFTER ASSEMBLY.

UNLESS OTHERWISE SPECIFIED, DIMENSIONS ARE IN MILLIMETERS.

TOLERANCES ARE:

DECIMALS	ANGLES
X.X: ±0.3 [.01]	5°
X.XX: ±0.13 [.005]	
X.XXX: ±0.051 [.0020]	

**PROPRIETARY NOTE**

THIS DOCUMENT CONTAINS CONFIDENTIAL AND PROPRIETARY INFORMATION AND ALL DESIGN, MANUFACTURING, REPRODUCTION, USE, PATENT RIGHTS AND SALES RIGHTS ARE EXPRESSLY RESERVED BY SAMTEC, INC. THIS DOCUMENT SHALL NOT BE DISCLOSED, IN WHOLE OR PART, TO ANY UNAUTHORIZED PERSON OR ENTITY NOR REPRODUCED, TRANSFERRED OR INCORPORATED IN ANY OTHER PROJECT IN ANY MANNER WITHOUT THE EXPRESS WRITTEN CONSENT OF SAMTEC, INC.



520 PARK EAST BLVD, NEW ALBANY, IN 47150  
PHONE: 812-944-6733 FAX: 812-948-5047  
e-Mail: info@SAMTEC.com code 55322

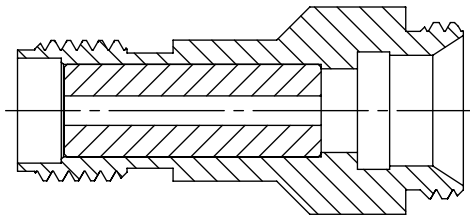
MATERIAL: DO NOT SCALE DRAWING SHEET SCALE: 4:1

SHELL, BODY: BRASS  
INSULATORS: PTFE  
BULLET SHELL, BULLET PIN, SOCKET: BeCu

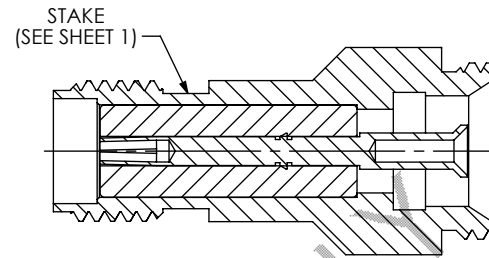
DESCRIPTION: SMA JACK TO AFI PLUG ADAPTER, 50 OHM, ASSEMBLY

DWG. NO. ADP5-01SJX-10SPX

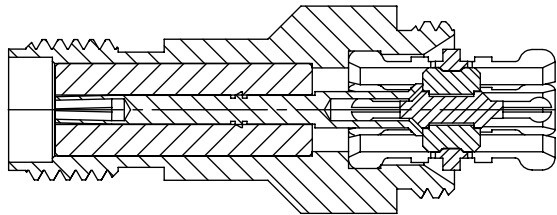
BY: EMMA CHEN 05/24/2012 SHEET 1 OF 2



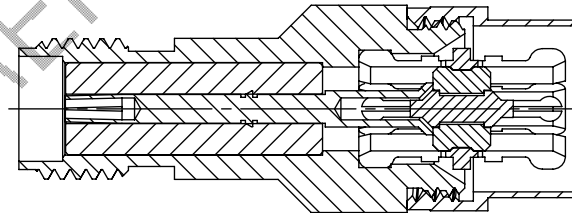
IN-PROCESS 1  
INSERT INSULATOR



IN-PROCESS 2  
INSERT SOCKET AND STAKE



IN-PROCESS 3  
INSERT BULLET



IN-PROCESS 4  
INSERT SHELL

EXISTING CUSTOMERS ONLY

**PROPRIETARY NOTE**  
 THIS DOCUMENT CONTAINS CONFIDENTIAL AND PROPRIETARY INFORMATION AND ALL DESIGN, MANUFACTURING, REPRODUCTION, USE, PATENT RIGHTS AND SALES RIGHTS ARE EXPRESSLY RESERVED BY SAMTEC, INC. THIS DOCUMENT SHALL NOT BE DISCLOSED, IN WHOLE OR PART, TO ANY UNAUTHORIZED PERSON OR ENTITY NOR REPRODUCED, TRANSFERRED OR INCORPORATED IN ANY OTHER PROJECT IN ANY MANNER WITHOUT THE EXPRESS WRITTEN CONSENT OF SAMTEC, INC.

DO NOT SCALE DRAWING

SHEET SCALE: 3:1



520 PARK EAST BLVD, NEW ALBANY, IN 47150  
 PHONE: 812-944-6733 FAX: 812-948-5047  
 e-Mail info@SAMTEC.com code 55322

DESCRIPTION:  
 SMA JACK TO AFI PLUG ADAPTER, 50 OHM, ASSEMBLY

DWG. NO. **ADP5-01SJX-10SPX**

BY: EMMA CHEN 05/24/2012 SHEET 2 OF 2