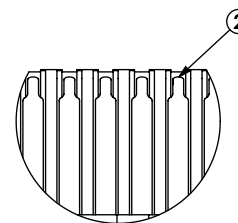
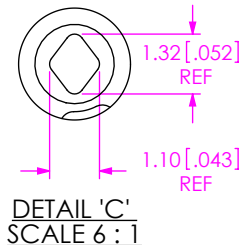
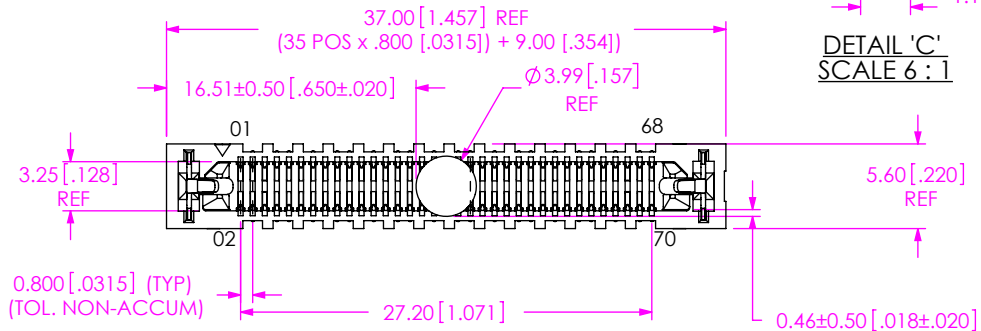


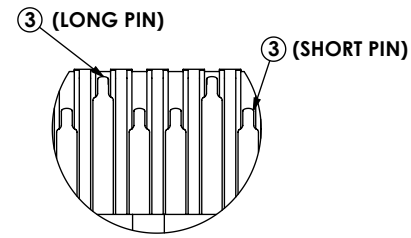
REVISION E

NOTES:

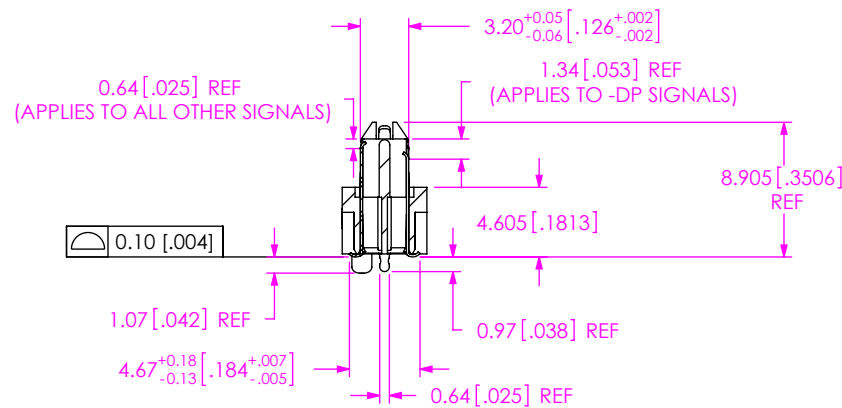
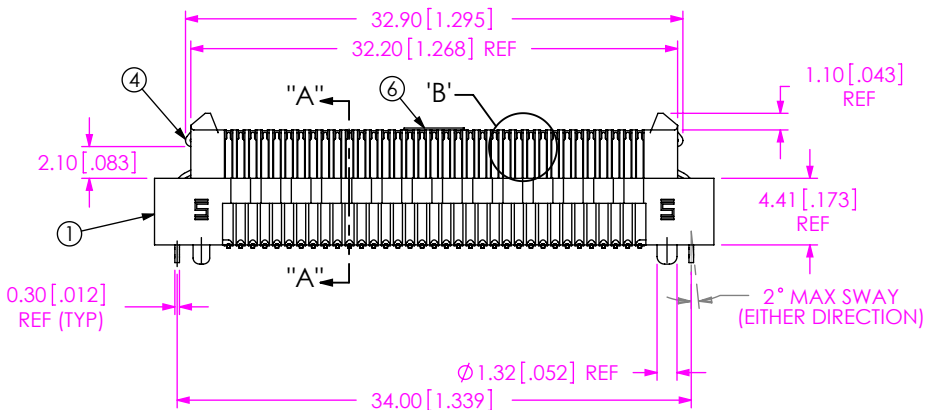
1. CONTACT CONFIGURATION NOT AVAILABLE AS STANDARD.
2. NOT APPLICABLE
3. MAXIMUM BURR ALLOWANCE: 0.038 [.0015]
4. MINIMUM PUSHOUT FORCE: 2.22N [.5 LB]
5. PARTS TO BE PACKAGED IN TRAYS.



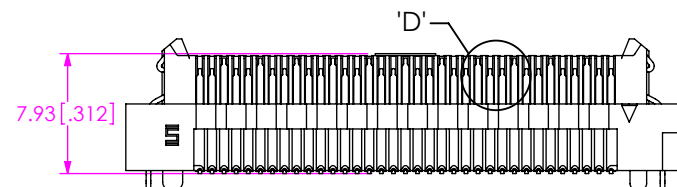
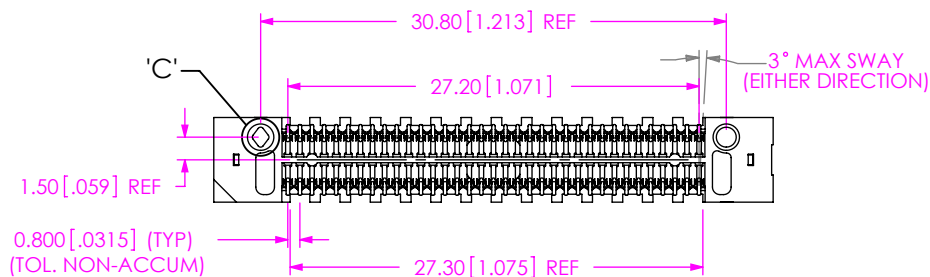
DETAIL 'B'  
SCALE 6:1  
SE SIDE



DETAIL 'D'  
SCALE 6:1  
DP SIDE



SECTION "A"-"A"



ODD ROW (DP SIDE, HOT PLUG SIDE)  
(PIN ORIENTATION TO BE EXACTLY AS SHOWN)

EVEN ROW

BY SIGNING THIS DOCUMENT YOU ARE ACCEPTING THE CONDITIONS SET WITHIN. YOUR REQUIREMENTS MUST BE LISTED WITHIN THIS DRAWING, WHERE NO DIRECTION FROM THE CUSTOMER IS IDENTIFIED SAMTEC'S PROCESS REQUIREMENTS WILL BE USED.

DATE: \_\_\_\_\_  
 COMPANY: \_\_\_\_\_  
 CUSTOMER SIGNATURE: \_\_\_\_\_  
 PRINTED NAME: \_\_\_\_\_  
 PHONE NO.: \_\_\_\_\_  
 EXCEPTIONS: \_\_\_\_\_

ITEM NO.	PART NUMBER	QUANTITY	MATERIAL
1	ERM8-035-05.0-DV-L	1.0000	VECTRA E130i, COLOR: BLACK
2	T-1M37-05.0-S	35.0000	PHOS BRONZE, 510 SPRING TEMPER
3	T-M48-05.0-S	35.0000	PHOS BRONZE, 510 SPRING TEMPER
4	WT-29-03-F	2.0000	BeCu #25, 1/2 HT
5	TY-ASP125	.01786	BLACK HIPS
6	K-DOT-.157-.250-.005	1.0000	POLYIMIDE FILM


UNLESS OTHERWISE SPECIFIED, DIMENSIONS ARE IN INCHES.  
 TOLERANCES ARE:  
 DECIMALS ANGLES  
 .X: ±.3[.01] 2°  
 .XX: ±.13[.005]  
 .XXX: ±.051[.0020]

PROPRIETARY NOTE  
 THIS DOCUMENT CONTAINS CONFIDENTIAL AND PROPRIETARY INFORMATION AND ALL DESIGN, MANUFACTURING, REPRODUCTION, USE, PATENT RIGHTS AND SALES RIGHTS ARE EXPRESSLY RESERVED BY SAMTEC, INC. THIS DOCUMENT SHALL NOT BE DISCLOSED, IN WHOLE OR PART, TO ANY UNAUTHORIZED PERSON OR ENTITY NOR REPRODUCED, TRANSFERRED OR INCORPORATED IN ANY OTHER PROJECT IN ANY MANNER WITHOUT THE EXPRESS WRITTEN CONSENT OF SAMTEC, INC.

DO NOT SCALE DRAWING SHEET SCALE: 2:1

PLATING:  
 CONTACT AREA: .000030 GOLD OVER .000050 NICKEL  
 REMAINDER: .000200 REF TIN OVER .000050 NICKEL  
 LATCHES: .000003 GOLD OVER .000050 NICKEL

C:\EnterpriseVault\dwg\sw\asp\135000\ASP-135020-01.sldddw

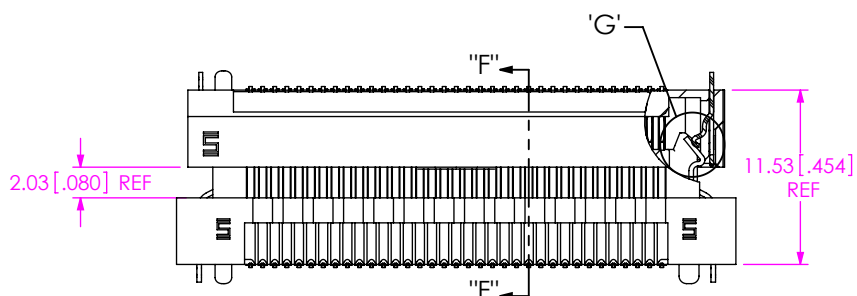
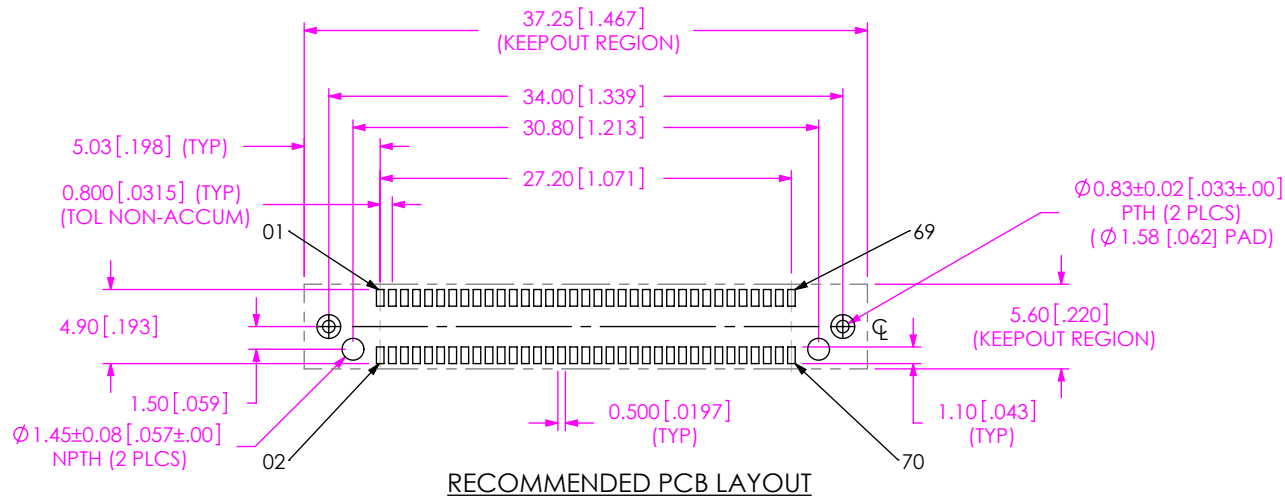


520 PARK EAST BLVD, NEW ALBANY, IN 47150  
 PHONE: 812-944-6733 FAX: 812-948-5047  
 e-Mail: info@SAMTEC.com code 53322

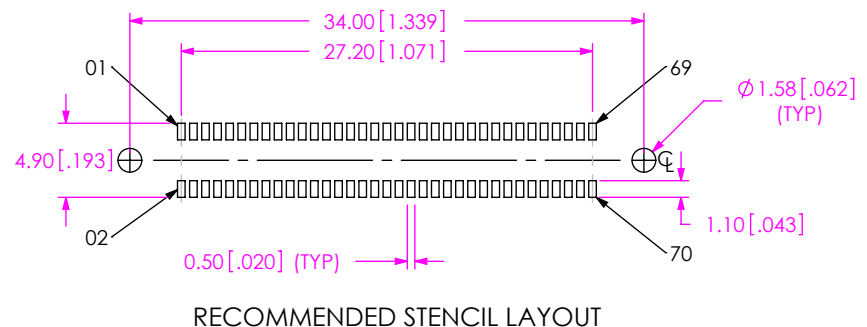
DESCRIPTION: MODIFIED ERM8 ASSEMBLY

DWG. NO. ASP-135020-01

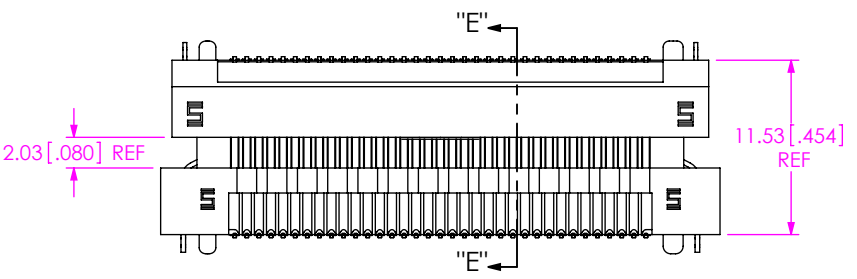
BY: S. SELLE 10-11-2007 SHEET 1 OF 2



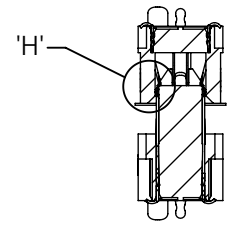
SECTION "F"-"F"



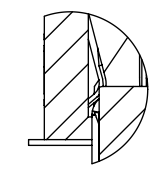
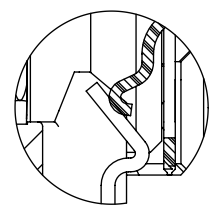
RECOMMENDED STENCIL LAYOUT



PIN ENGAGING VIEW



SECTION "E"-"E"



<p>SHEET SCALE: 2:1</p>	<p><b>PROPRIETARY NOTE</b>          THIS DOCUMENT CONTAINS INFORMATION CONFIDENTIAL AND PROPRIETARY TO SAMTEC, INC. AND SHALL NOT BE REPRODUCED OR TRANSFERRED TO OTHER DOCUMENTS OR DISCLOSED TO OTHERS OR USED FOR ANY PURPOSE OTHER THAN THAT WHICH IT WAS OBTAINED WITHOUT THE EXPRESSED WRITTEN CONSENT OF SAMTEC, INC.</p>	
	<p><b>DESCRIPTION:</b>          MODIFIED ERM8 ASSEMBLY</p>	
	<p><b>DWG. NO.:</b>          ASP-135020-01</p>	
<p><b>BY:</b> S. SELLE</p>		<p>10-11-2007</p>
<p>SHEET 2 OF 2</p>		



520 PARK EAST BLVD, NEW ALBANY, IN 47150  
 PHONE: 812-944-6733 FAX: 812-948-5047  
 e-Mail: info@SAMTEC.com code 55322