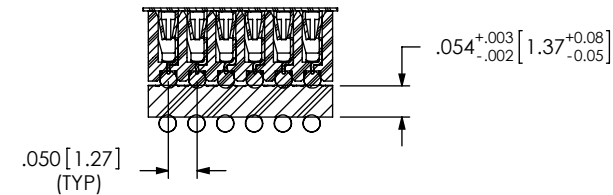
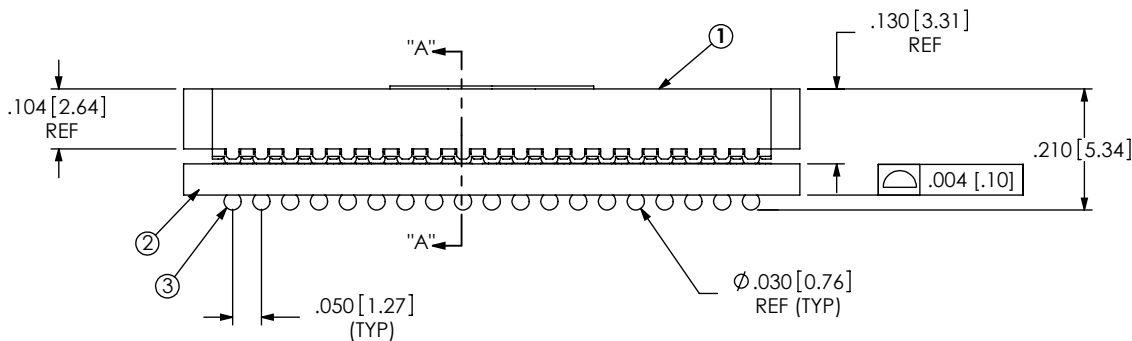
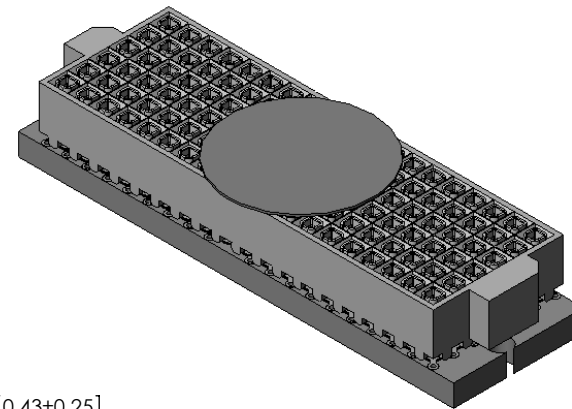
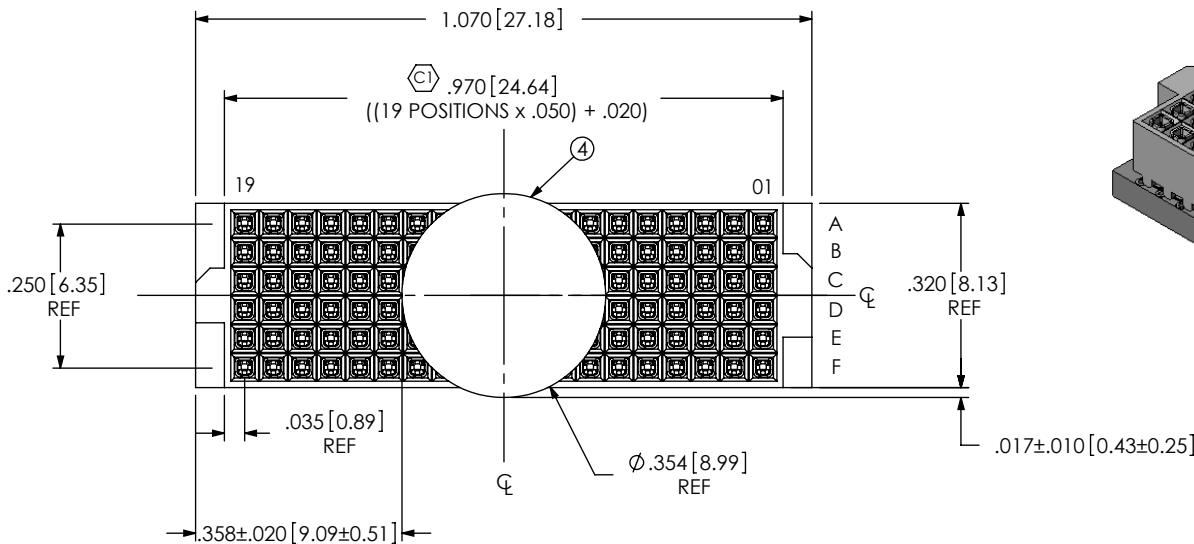


REVISION

A	JB	D TERRELL
1/22/2009	ECN-104136	RELEASE FOR PRODUCTION
B	JB	P BRUMLEY
2/5/2009	ECN-104883	
SHT 1, BOM: CHG ASP-134612-03 TO ASP-134612-14.		

- NOTES:
 1. 19 POSITION CONNECTOR NOT AVAILABLE AS STANDARD.
 2. Ⓢ REPRESENTS A CRITICAL DIMENSION.
 3. CONTACT NOT ALLOWED TO PROTRUDE FROM TOP OF BODY.
 4. PARTS TO BE PACKAGED IN TAPE & REEL.



SECTION "A"- "A"

ITEM NO.	PART NUMBER	QUANTITY	MATERIAL
1	ASP-134612-14	1.0000	VECTRA E130i, COLOR: BLACK
2	PCB-100782-MKT-XX	1.0000	FR4
3	SDB-030-6337	228.00	63% TIN /37% LEAD
4	K-850-650	1.0000	POLYAMIDE FILM (KAPTON)
5	CT-ASP1949MS	.00222	CONDUCTIVE POLYMER

B

UNLESS OTHERWISE SPECIFIED, DIMENSIONS ARE IN INCHES. TOLERANCES ARE:
 DECIMALS ANGLES
 .XX: ±.01 [.3] 2°
 .XXX: ±.005 [.13]
 .XXXX: ±.0020 [.051]

PROPRIETARY NOTE
 THIS DOCUMENT CONTAINS INFORMATION CONFIDENTIAL AND PROPRIETARY TO SAMTEC, INC. AND SHALL NOT BE REPRODUCED OR TRANSFERRED TO OTHER DOCUMENTS OR DISCLOSED TO OTHERS OR USED FOR ANY PURPOSE OTHER THAN THAT WHICH IT WAS OBTAINED WITHOUT THE EXPRESSED WRITTEN CONSENT OF SAMTEC, INC.



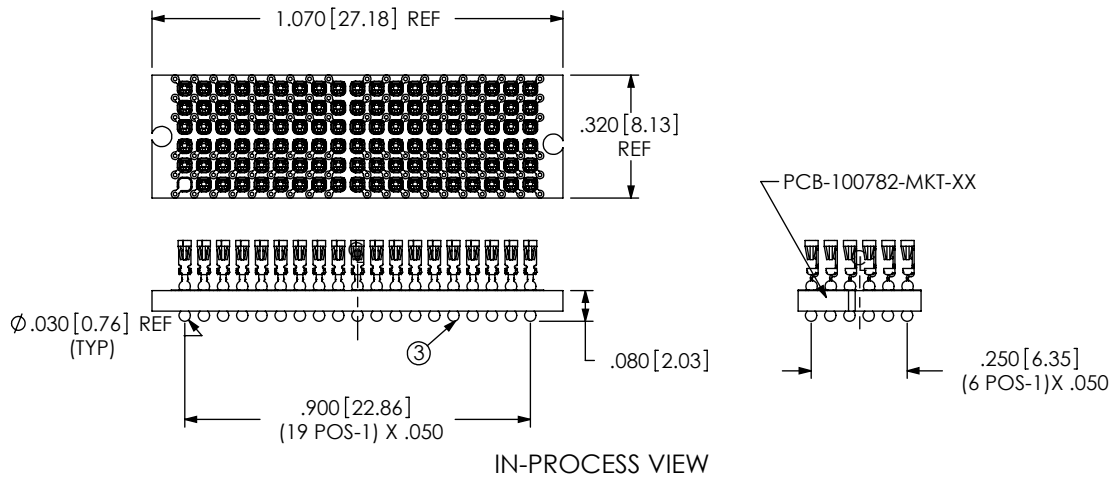
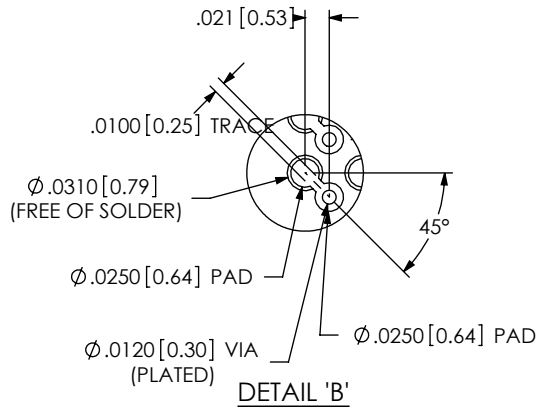
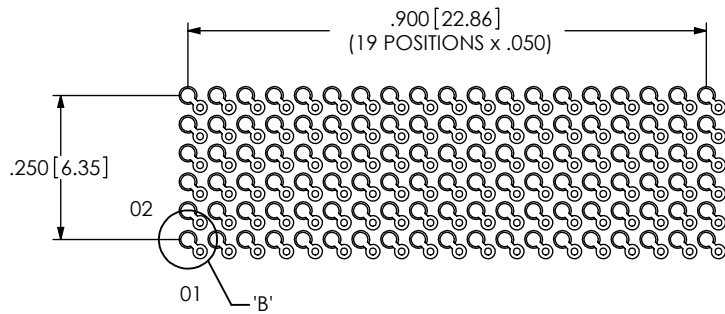
520 PARK EAST BLVD, NEW ALBANY, IN 47150
 PHONE: 812-944-6733 FAX: 812-948-5047
 e-Mail: info@SAMTEC.com code: 55322

DO NOT SCALE DRAWING SHEET SCALE: 3:1
 PLATING:
 CONTACT AREA: .000030 GOLD OVER .000050 NICKEL
 REMAINDER: .000003 FLASH GOLD OVER .000050 NICKEL

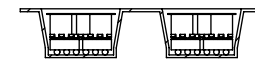
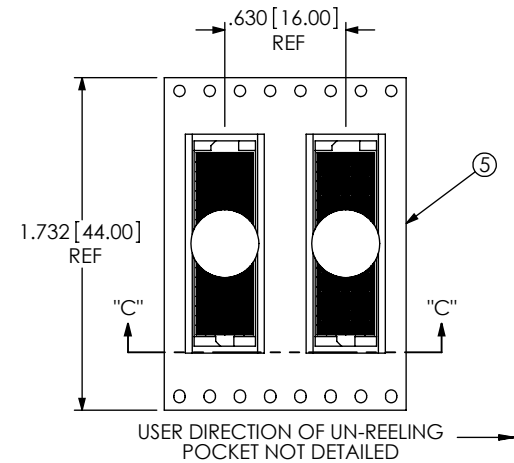
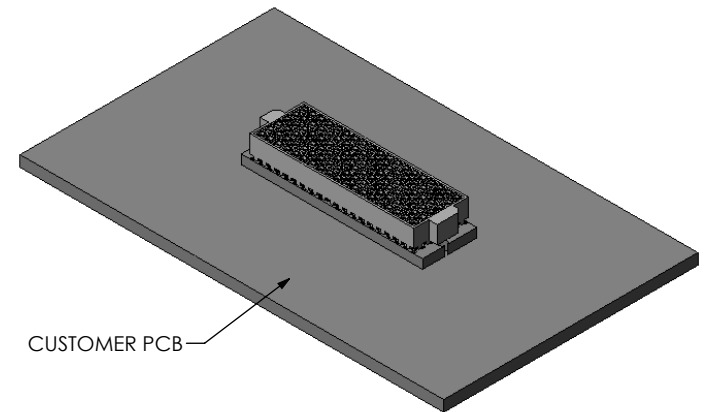
DESCRIPTION: .050 DUAL SOCKET ASSEMBLY

DWG. NO. **ASP-145465-01**

RECOMMENDED MAIN BOARD LAYOUT



APPLICATION VIEW
PROCESSED BY CUSTOMER



SECTION "C"- "C"
SCALE 1 : 1

PACKAGING VIEW

PROPRIETARY NOTE

THIS DOCUMENT CONTAINS INFORMATION CONFIDENTIAL AND PROPRIETARY TO SAMTEC, INC. AND SHALL NOT BE REPRODUCED OR TRANSFERRED TO OTHER DOCUMENTS OR DISCLOSED TO OTHERS OR USED FOR ANY PURPOSE OTHER THAN THAT WHICH IT WAS OBTAINED WITHOUT THE EXPRESSED WRITTEN CONSENT OF SAMTEC, INC.



520 PARK EAST BLVD, NEW ALBANY, IN 47150
PHONE: 812-944-6733 FAX: 812-948-5047
e-Mail: info@SAMTEC.com code: 55322

SHEET SCALE: 3:1

DESCRIPTION:
.050 DUAL SOCKET ASSEMBLY

DWG. NO.
ASP-145465-01