

REVISION E

REVISION

A	JB	J HENRY
6/16/2009	ECN-111954	

B	MM	M BOONE
9/2/2009	ECN-116250	

MULTIPLE VIEWS: CHG FROM 13 POSITIONS TO 10 POSITIONS, CHG DIMENSION FROM 17.91 TO 15.50, CHG DIMENSION FROM 14.73 TO 12.32, CHG DIMENSION FROM 9.60 TO 7.20, CHG DIMENSION FROM 16.21 TO 13.80, CHG DIMENSION FROM 13.53 TO 11.14, BOM CHG QTY ITEM2 FROM 26 TO 20

C	LF	M BOONE
10/15/2009	ECN-118447	

BOM CHG ITEM 1 FROM ERF8-013-05-0-DVL TO ERF8-010-05-0-DVL AND FROM ITEM 5 CT-ERF8027MS TO CT-ERF8038MS

D	JB	Z Paden
3/2/2010	ECN-126257	

SHT 2, RECOMMENDED PCB LAYOUT: DEL 5.30 (TYP), ADD 1.80 REF. CHG 5.61 TO 5.60, CHG Ø0.83±0.02 TO Ø0.83±0.05, ADD NOTE TO BE SOLDERED USING PASTE-IN-HOLE TECHNOLOGY, RECOMMENDED STENCIL LAYOUT: CHG 16.20 TO 13.80, CHG Ø1.58(2 PLCS) TO Ø2.24(2 PLCS).

E	VZ	D FRALEY
1/16/2013	ECN-195753	

NOTES, ADD NOTE 6.

ACCEPTANCE OF DRAWING

ACCEPTED WITH DEVIATIONS LISTED

DATE:

COMPANY:

CUSTOMER SIGNATURE

PRINTED NAME

PHONE No:

FAX No:

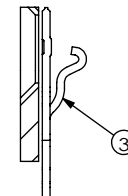
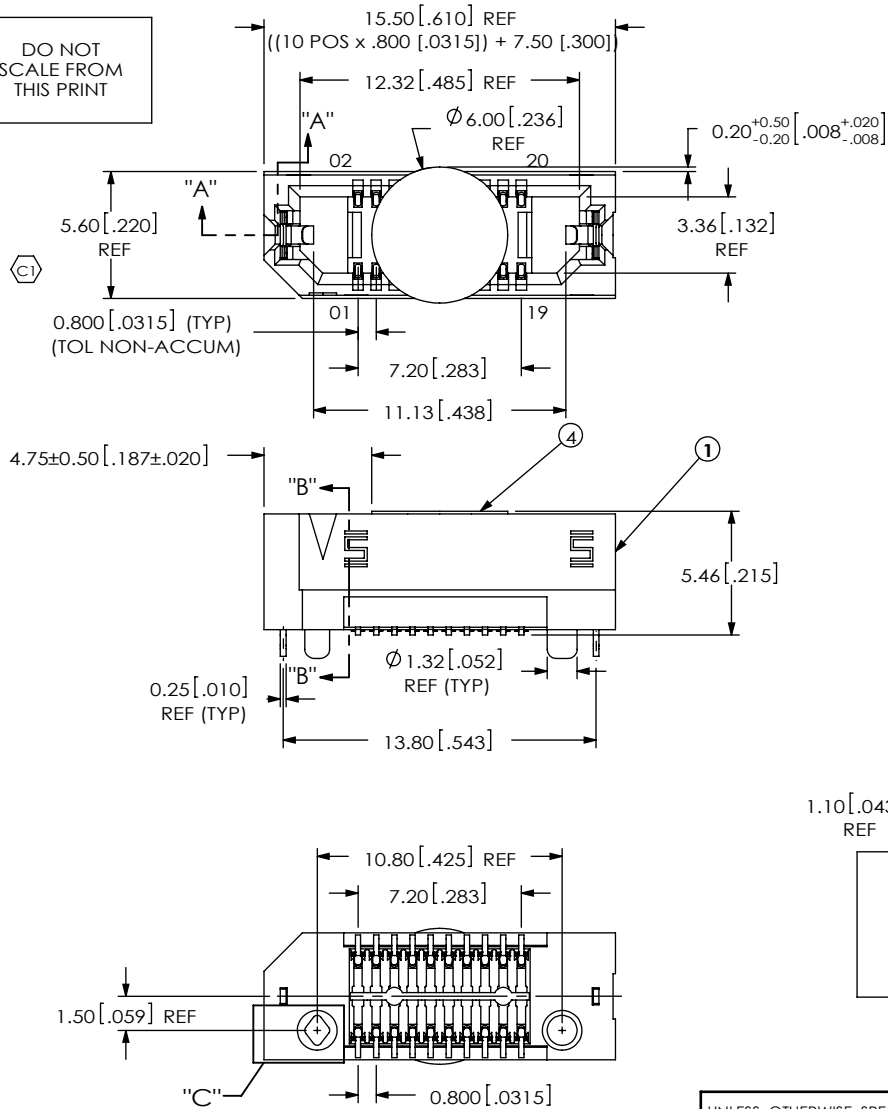
NOTES:

1. STANDARD PART SET UP AS ASP.
2. Ⓢ REPRESENTS A CRITICAL DIMENSION.
3. MAXIMUM BURR ALLOWANCE: .038 [.0015].
4. MINIMUM PUSHOUT FORCE: 2.22N [.5LB].
5. PARTS TO BE PACKAGED IN TAPE & REEL.
6. FOR QUANTITIES UP TO 49 PIECES, NO LEADER, TRAILER, OR EIA-481-D REEL WILL BE SUPPLIED. FOR QUANTITIES OF 50-124 PIECES, NO LEADER, TRAILER WILL BE SUPPLIED

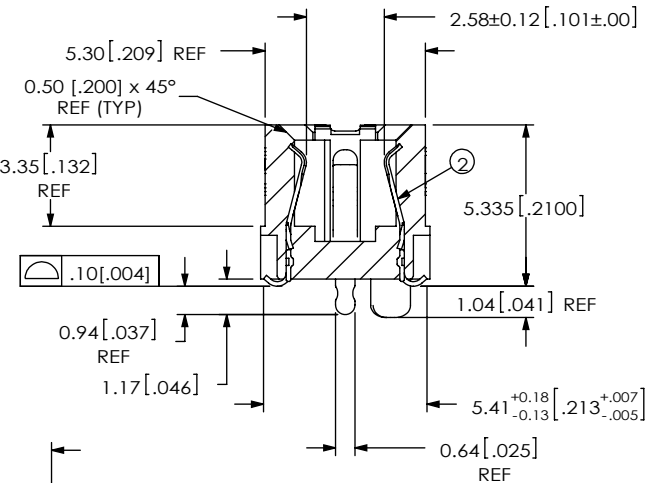
DESIGNED & DIMENSIONED IN MILLIMETERS [INCHES]

E

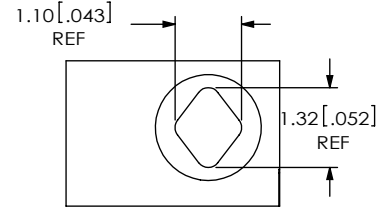
DO NOT SCALE FROM THIS PRINT



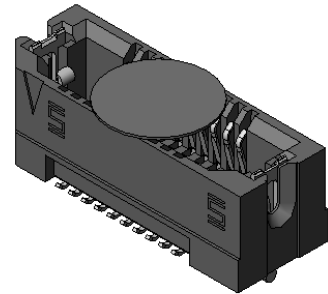
SECTION "A"- "A" SCALE 4 : 1



SECTION "B"- "B" SCALE 4 : 1

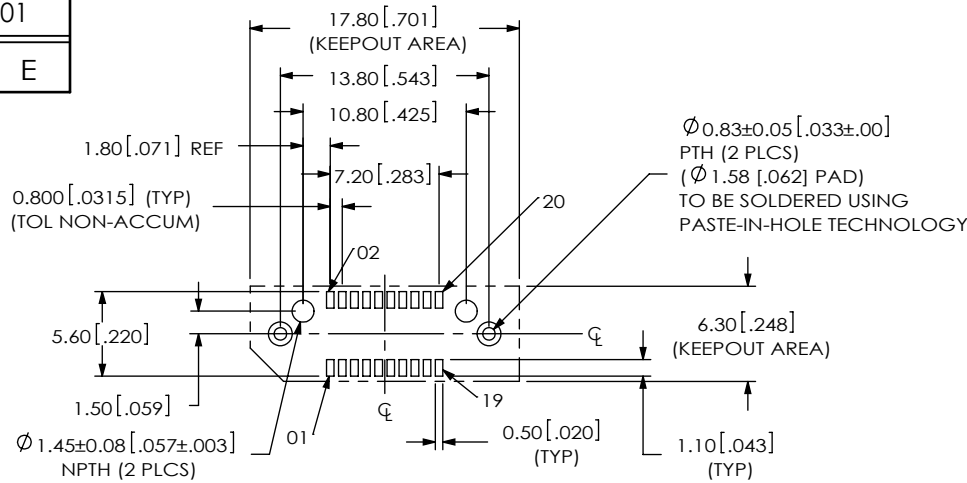


DETAIL "C" SCALE 8 : 1

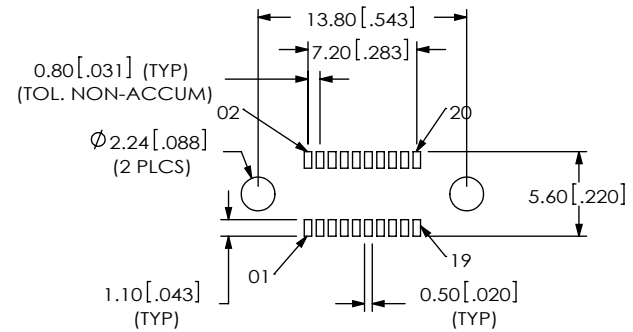


UNLESS OTHERWISE SPECIFIED, DIMENSIONS ARE IN MILLIMETERS. TOLERANCES ARE: DECIMALS ANGLES .X: ±.3[.01] 2° .XX: ±.13[.005] .XXX: ±.051[.0020]	PROPRIETARY NOTE THIS DOCUMENT CONTAINS INFORMATION CONFIDENTIAL AND PROPRIETARY TO SAMTEC, INC. AND SHALL NOT BE REPRODUCED OR TRANSFERRED TO OTHER DOCUMENTS OR DISCLOSED TO OTHERS OR USED FOR ANY PURPOSE OTHER THAN THAT WHICH IT WAS OBTAINED WITHOUT THE EXPRESSED WRITTEN CONSENT OF SAMTEC, INC.	520 PARK EAST BLVD. NEW ALBANY, IN 47150 PHONE: 812-944-6733 FAX: 812-948-5047 e-Mail info@SAMTEC.com code 55322
PLATING: CONTACT AREA: .000030 MIN GOLD OVER .000050 MIN NICKEL REMAINDER: .000200 REF TIN OVER .000050 MIN NICKEL LATCHES: .000003 MIN GOLD OVER .000050 MIN NICKEL	DWG. NO. ASP-148421-01	BY: J. BROWNING 06/16/2009 SHEET 1 OF 2

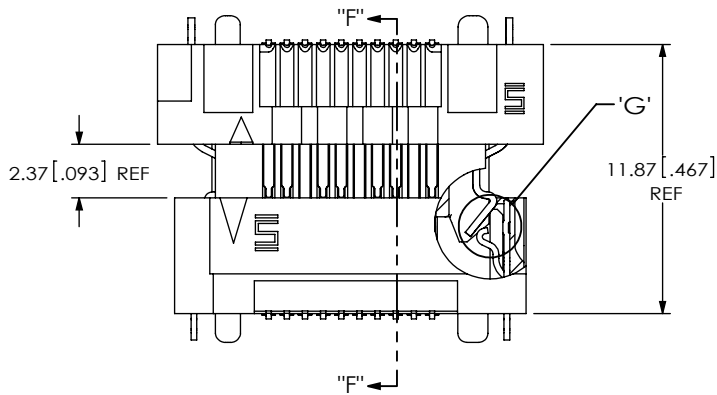
ITEM NO.	PART NUMBER	QUANTITY	MATERIAL
1	ERF8-010-05-0-DV-L	1.0000	VECTRA E130i, COLOR: BLACK
2	C-211-05-0-S	20.0000	BeCu, 390 HT
3	WT-30-01-F	2.0000	BeCu, #25, 1/2 HT
4	K-500-300	1.0000	POLYIMIDE FILM
5	CT-ERF8038MS	1.0000	CONDUCTIVE POLYMER



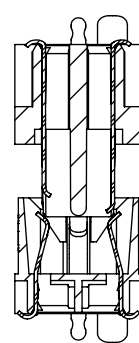
RECOMMENDED PCB LAYOUT



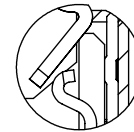
RECOMMENDED STENCIL LAYOUT



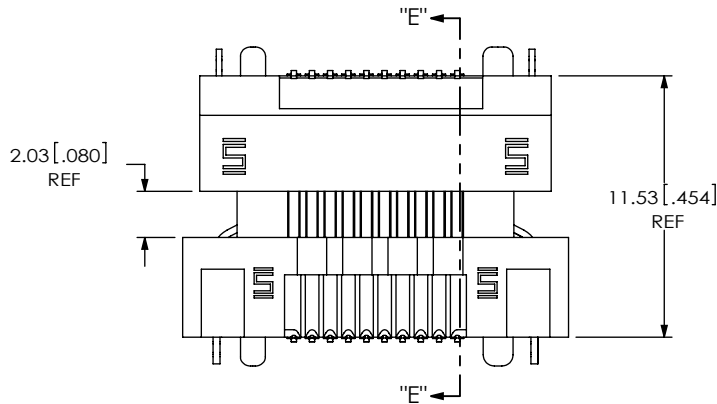
LATCH ENGAGING VIEW



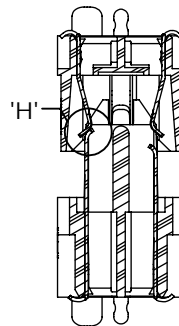
SECTION "F"-"F"



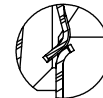
DETAIL 'G'
SCALE 6:1



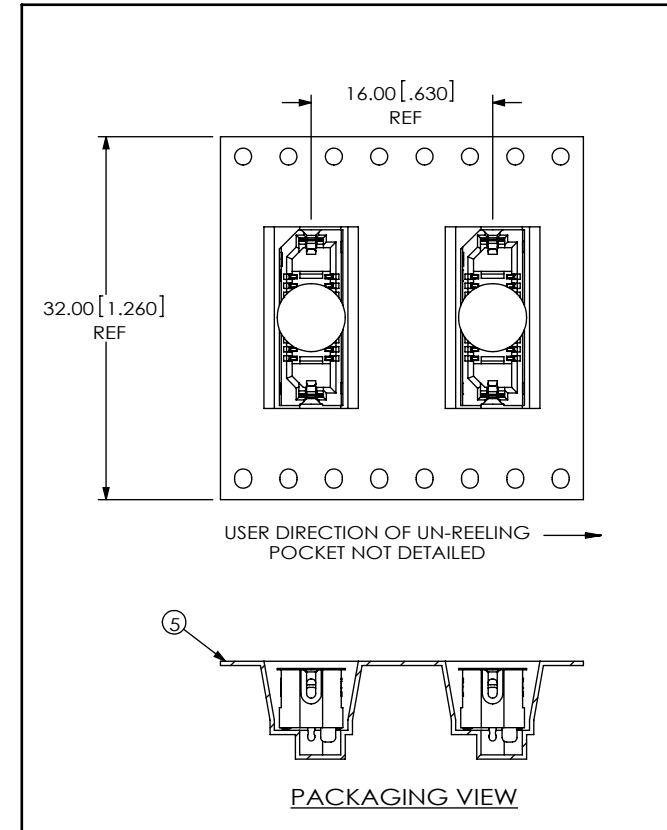
PIN ENGAGING VIEW



SECTION "E"-"E"



DETAIL 'H'
SCALE 6:1



PROPRIETARY NOTE

THIS DOCUMENT CONTAINS INFORMATION CONFIDENTIAL AND PROPRIETARY TO SAMTEC, INC. AND SHALL NOT BE REPRODUCED OR TRANSFERRED TO OTHER DOCUMENTS OR DISCLOSED TO OTHERS OR USED FOR ANY PURPOSE OTHER THAN THAT WHICH IT WAS OBTAINED WITHOUT THE EXPRESSED WRITTEN CONSENT OF SAMTEC, INC.



520 PARK EAST BLVD, NEW ALBANY, IN 47150
 PHONE: 812-944-6733 FAX: 812-948-5047
 e-Mail info@SAMTEC.com code 55322

SHEET SCALE: 3:1

DESCRIPTION:

ERF8 ASSEMBLY

DWG. NO.

ASP-148421-01

BY: J. BROWNING 06/16/2009

SHEET 2 OF 2