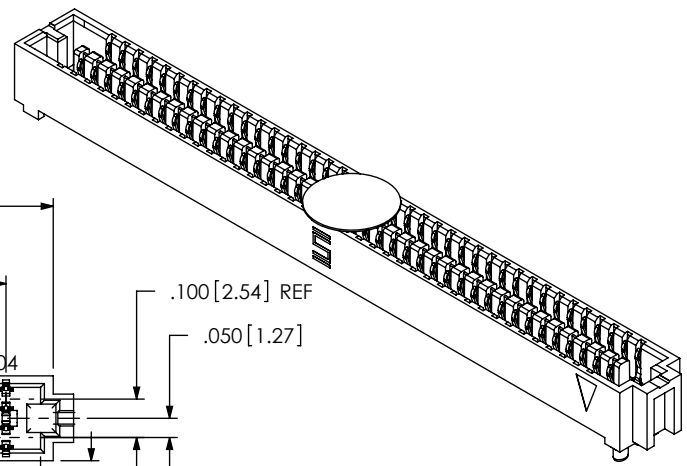
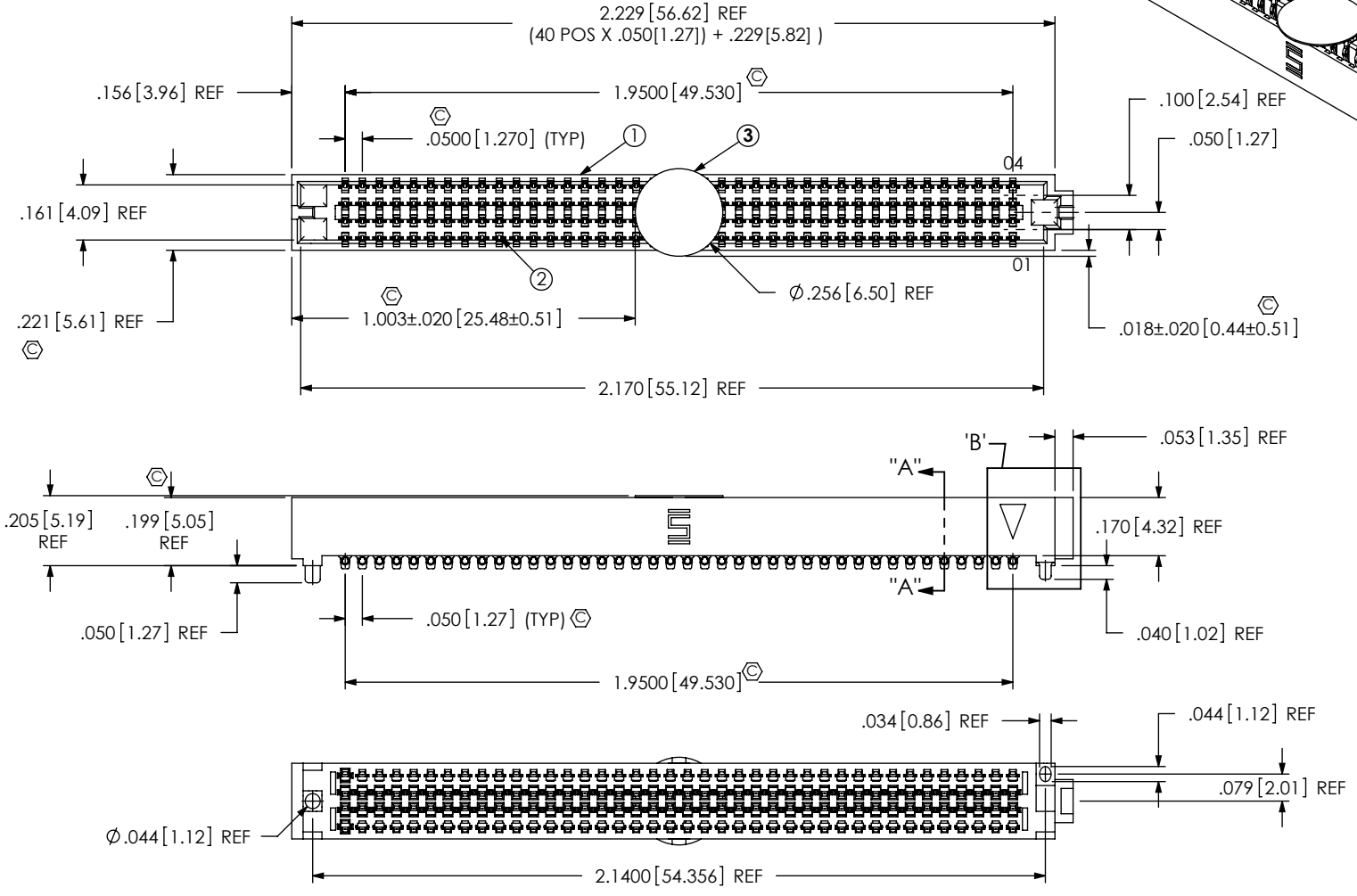


- NOTES:
1. STANDARD PART SET UP AS ASP FOR HYPER TRANSPORT STANDARD.  
CONTACT STANDARDS@SAMTEC.COM FOR PRICING AND DESIGN QUESTIONS
  2.  $\text{C}$  REPRESENTS A CRITICAL DIMENSION.
  3. MINIMUM PUSHOUT FORCE: .75 LB.
  4. DIMENSION C12 MUST BE MEASURED IN ALL FOUR CORNERS USING INSPECTION FIXTURE AT-1817-836-1.  
USE CO-AU-WI-2003-M FOR PROCESS.
  5. NOTE DELETED.
  6. PARTS TO BE PACKAGED IN TAPE & REEL.  
ATTACH LABEL "SEAX-00001" TO EACH TAPE & REEL PACKAGE.
  7. MAXIMUM ROW TO ROW VARIATION: .003[.08].

DO NOT SCALE FROM THIS PRINT

BY SIGNING THIS DOCUMENT YOU ARE ACCEPTING THE CONDITIONS SET WITHIN. YOUR REQUIREMENTS MUST BE LISTED WITHIN THIS DRAWING. WHERE NO DIRECTION FROM THE CUSTOMER IS IDENTIFIED SAMTEC'S PROCESS REQUIREMENTS WILL BE USED.

DATE: \_\_\_\_\_  
 COMPANY: \_\_\_\_\_  
 CUSTOMER SIGNATURE: \_\_\_\_\_  
 PRINTED NAME: \_\_\_\_\_  
 PHONE NO: \_\_\_\_\_  
 EXCEPTIONS: \_\_\_\_\_



ITEM NO.	PART NUMBER	QUANTITY	MATERIAL
1	SEAF-40-05.0-04-A	1.0000	UL 94 V0, COLOR: BLACK
2	NEW-SUB-C-209-05.0-L-2	160.00	COPPER ALLOY/LEAD FREE SOLDER
3	K-DOT-.256-.375-.005	1.0000	POLYIMIDE FILM
4	CT-SEAF020MS	.00267	CONDUCTIVE POLYMER


NON STANDARD		UNLESS OTHERWISE SPECIFIED, DIMENSIONS ARE IN INCHES. TOLERANCES ARE: DECIMALS ANGLES .XX: $\pm.01[.3]$ .XXX: $\pm.005[.13]$ .XXXX: $\pm.0020[.051]$	PROPRIETARY NOTE THIS DOCUMENT CONTAINS INFORMATION CONFIDENTIAL AND PROPRIETARY TO SAMTEC, INC. AND SHALL NOT BE REPRODUCED OR TRANSFERRED TO OTHER DOCUMENTS OR DISCLOSED TO OTHERS OR USED FOR ANY PURPOSE OTHER THAN THAT WHICH IT WAS OBTAINED WITHOUT THE EXPRESSED WRITTEN CONSENT OF SAMTEC, INC.
COMPONENT			
ASSEMBLY			
TOOLING			
PROCESS			
PACKAGING			
OTHER	X		

DO NOT SCALE DRAWING SHEET SCALE: 2:1

PLATING:  
CONTACT AREA: .000010 MIN GOLD OVER .000050 MIN NICKEL  
REMAINDER: .000200 REF TIN OVER .000050 NICKEL

SOLDER COMPOSITION: 95.5% TIN/3.8% SILVER/7% COPPER CHARGE TAIL

F:\d\wg\misc\mktg\ASP-151798-01-05.0-MKT.SLDDRW

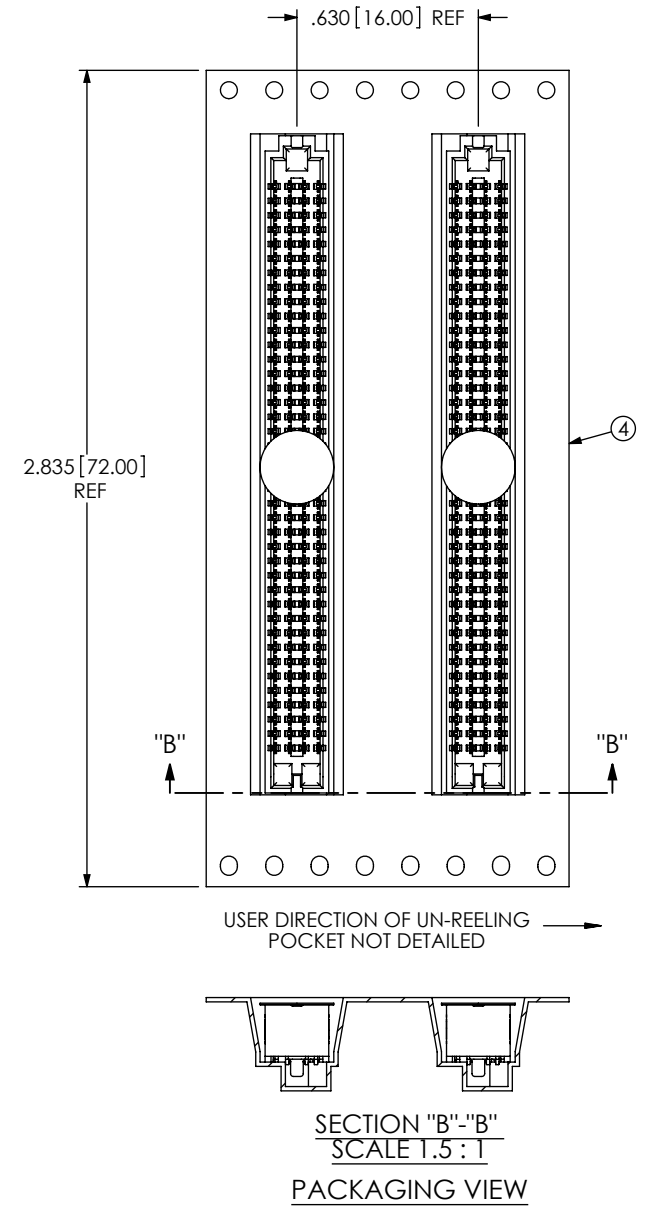
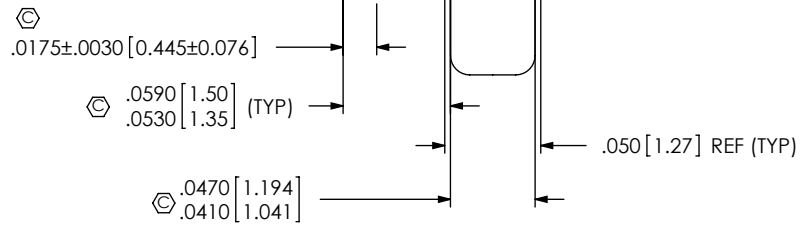
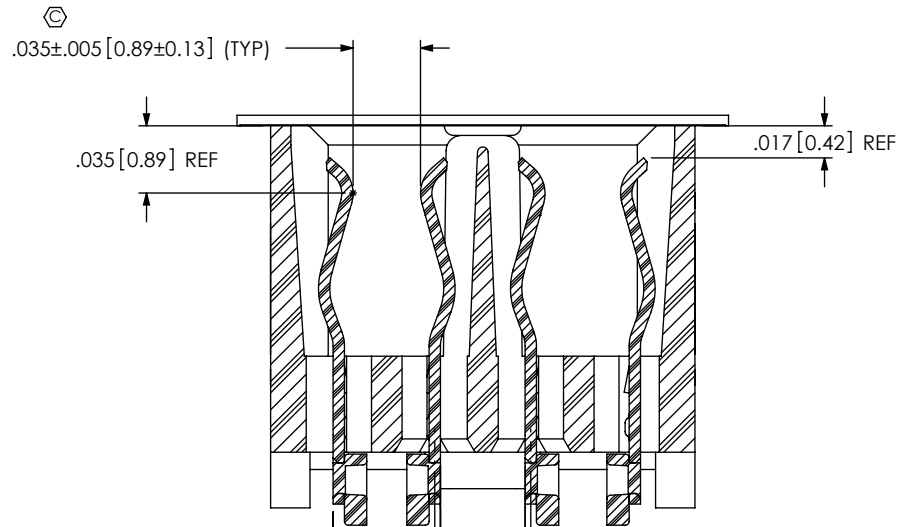
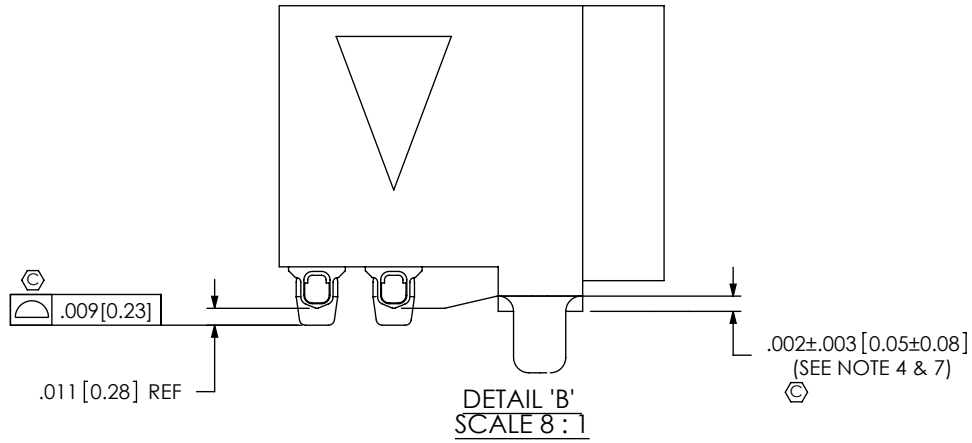


520 PARK EAST BLVD, NEW ALBANY, IN 47150  
 PHONE: 812-944-6733 FAX: 812-948-5047  
 e-Mail info@SAMTEC.com code 53322

DESCRIPTION: .050 PITCH SOCKET ARRAY

DWG. NO. ASP-151798-01-05.0

BY: J. BROWNING 05/06/2010 SHEET 1 OF 2



PROPRIETARY NOTE

THIS DOCUMENT CONTAINS INFORMATION CONFIDENTIAL AND PROPRIETARY TO SAMTEC, INC. AND SHALL NOT BE REPRODUCED OR TRANSFERRED TO OTHER DOCUMENTS OR DISCLOSED TO OTHERS OR USED FOR ANY PURPOSE OTHER THAN THAT WHICH IT WAS OBTAINED WITHOUT THE EXPRESSED WRITTEN CONSENT OF SAMTEC, INC.



520 PARK EAST BLVD, NEW ALBANY, IN 47150  
PHONE: 812-944-6733 FAX: 812-948-5047  
e-Mail: info@SAMTEC.com code 55322

SHEET SCALE: 2:1

DESCRIPTION:  
.050 PITCH SOCKET ARRAY

DWG. NO.  
ASP-151798-01-05.0

BY: J. BROWNING 05/06/2010 SHEET 2 OF 2