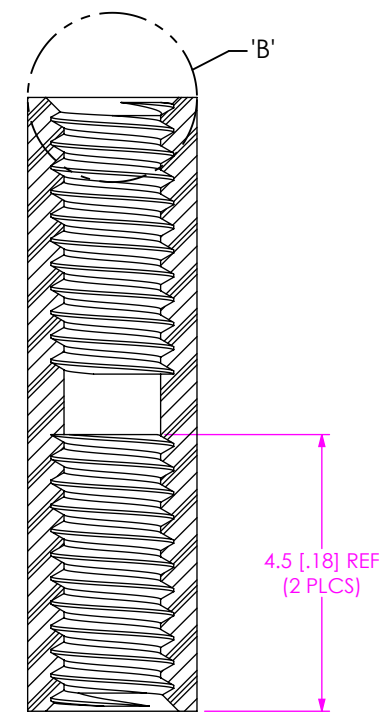
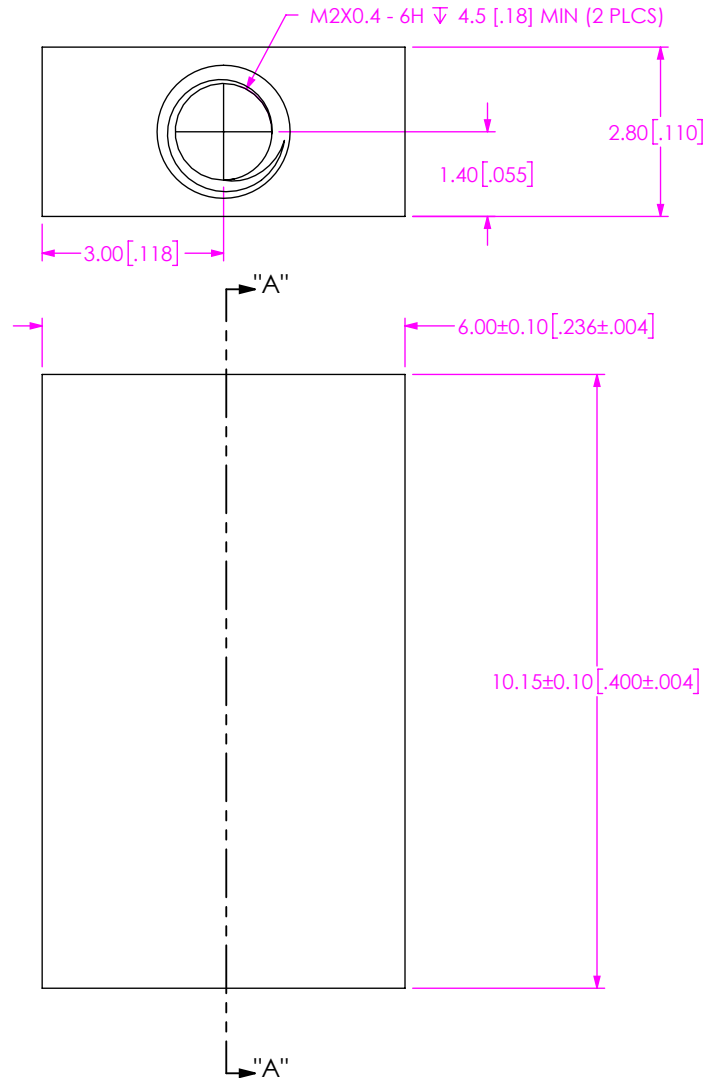
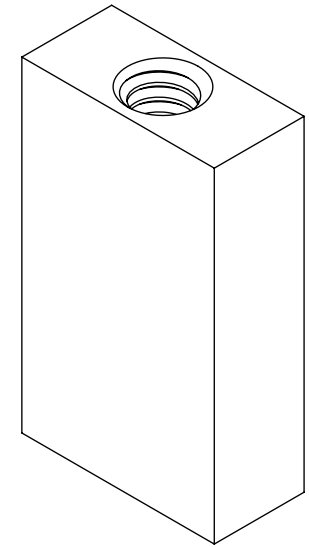


DO NOT
SCALE FROM
THIS PRINT

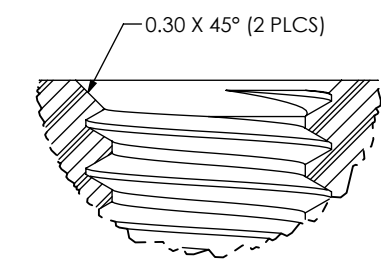
NOTES:

1. REPRESENTS A CRITICAL DIMENSION
2. NO LOCKING COMPOUND ON THREADS
3. BREAK ALL SHARP EDGES UNLESS OTHERWISE SPECIFIED
4. PART TO BE FREE OF ANY TOOLING LUBRICANTS, OILS, AND RESIDUE.
5. TORQUE TO 0.2 - 0.3 NM (1.8 - 2.7 IN-LBS) TO SECURE FASTENER IN A STATIC ENVIRONMENT ASSUMING RECOMMENDED BOARD TO BOARD DISTANCES ARE ACHIEVED WITHOUT DAMAGE TO THE PCB, HARDWARE OR OTHER COMPONENTS.
6. PARTS TO BE PACKAGED IN BULK.


DESIGNED & DIMENSIONED
IN MILLIMETERS [INCHES]



SECTION "A"-A"



DETAIL 'B'
SCALE 16:1

| | | |
|--|---|---|
| UNLESS OTHERWISE SPECIFIED, DIMENSIONS ARE IN MILLIMETERS. | * PROPRIETARY NOTE * |  520 PARK EAST BLVD, NEW ALBANY, IN 47150 PHONE: 812-944-6733 FAX: 812-948-5047 e-Mail info@SAMTEC.com code 53322 |
| TOLERANCES ARE: | THIS DOCUMENT CONTAINS CONFIDENTIAL AND PROPRIETARY INFORMATION AND ALL DESIGN, MANUFACTURING, REPRODUCTION, USE, PATENT RIGHTS AND SALES RIGHTS ARE EXPRESSLY RESERVED BY SAMTEC, INC. THIS DOCUMENT SHALL NOT BE DISCLOSED, IN WHOLE OR PART, TO ANY UNAUTHORIZED PERSON OR ENTITY NOR REPRODUCED, TRANSFERRED OR INCORPORATED IN ANY OTHER PROJECT IN ANY MANNER WITHOUT THE EXPRESS WRITTEN CONSENT OF SAMTEC, INC. | |
| DECIMALS ANGLES X.X: ±0.3 [.01] 2° X.XX: ±0.13 [.005] X.XXX: ±0.051 [.0020] | | |
| MATERIAL: DO NOT SCALE DRAWING | SHEET SCALE: 8:1 | DESCRIPTION: SEAX 6X19 VITA 88 XMC+ STANDOFF |
| 304 STAINLESS STEEL | | DWG. NO. ASP-213699-01-C |
| c:\enterprisevault\DWG\MISC\MKTG\ASP-213699-01-C-MKT.SLDDRW | | BY: BEHAGG 09/25/2019 SHEET 1 OF 1 |