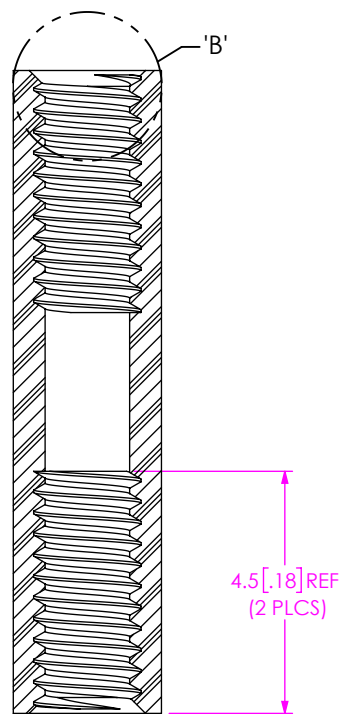
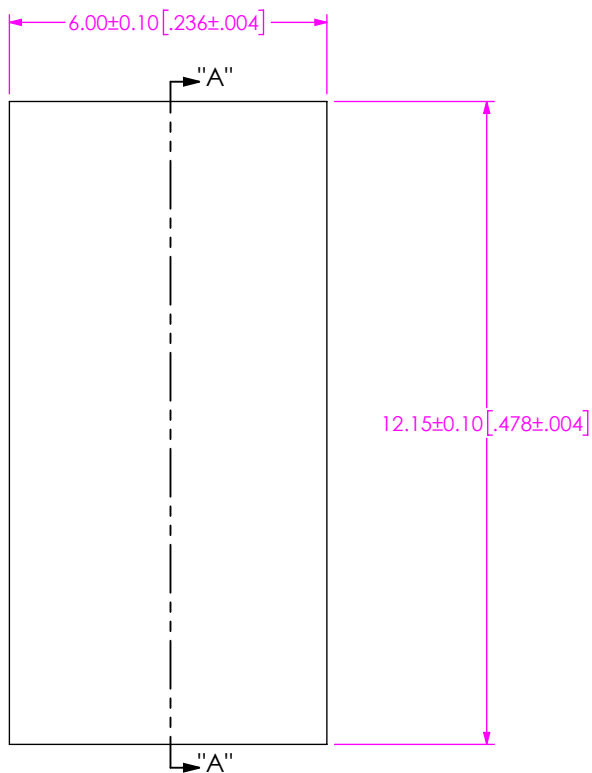
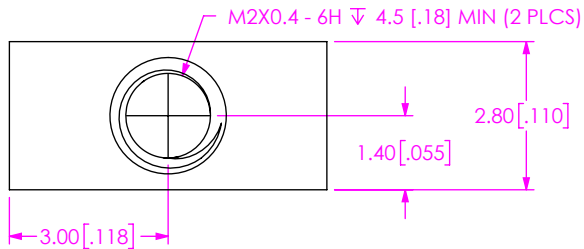


DO NOT  
SCALE FROM  
THIS PRINT

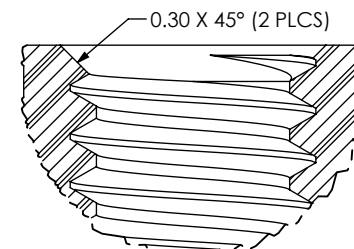
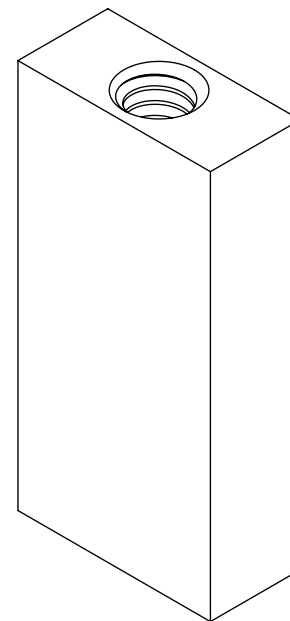
NOTES:

1. REPRESENTS A CRITICAL DIMENSION.
2. NO LOCKING COMPOUND ON THREADS.
3. BREAK ALL SHARP EDGES UNLESS OTHERWISE SPECIFIED.
4. PART TO BE FREE OF ANY TOOLING LUBRICANTS, OILS, AND RESIDUE.
5. TORQUE TO 0.2 - 0.3 NM (1.8 - 2.7 IN-LBS) TO SECURE FASTENER IN A STATIC ENVIRONMENT ASSUMING RECOMMENDED BOARD TO BOARD DISTANCES ARE ACHIEVED WITHOUT DAMAGE TO THE PCB, HARDWARE OR OTHER COMPONENTS.
6. PARTS TO BE PACKAGED IN BULK.

DESIGNED & DIMENSIONED  
IN MILLIMETERS [INCHES]



SECTION "A"-"A"



DETAIL 'B'  
SCALE 16:1

UNLESS OTHERWISE SPECIFIED,  
DIMENSIONS ARE IN MILLIMETERS.  
TOLERANCES ARE:  
DECIMALS                      ANGLES  
.X: ±0.3[.01]                      2°  
.XX: ±0.13[.005]  
.XXX: ±0.051[.0020]

**PROPRIETARY NOTE**  
\* THIS DOCUMENT CONTAINS CONFIDENTIAL AND PROPRIETARY INFORMATION AND ALL DESIGN, MANUFACTURING, REPRODUCTION, USE, PATENT RIGHTS AND SALES RIGHTS ARE EXPRESSLY RESERVED BY SAMTEC, INC. THIS DOCUMENT SHALL NOT BE DISCLOSED, IN WHOLE OR PART, TO ANY UNAUTHORIZED PERSON OR ENTITY NOR REPRODUCED, TRANSFERRED OR INCORPORATED IN ANY OTHER PROJECT IN ANY MANNER WITHOUT THE EXPRESS WRITTEN CONSENT OF SAMTEC, INC.



520 PARK EAST BLVD, NEW ALBANY, IN 47150  
PHONE: 812-944-6733    FAX: 812-948-5047  
e-Mail: info@SAMTEC.com    code 53322

MATERIAL:                      DO NOT SCALE DRAWING                      SHEET SCALE: 7:1  
304 STAINLESS STEEL

DESCRIPTION:  
SEAX 6X19 VITA 88 XMC+ STANDOFF

DWG. NO.                      ASP-213699-02-C

BY: BEHAGG                      09/25/2019                      SHEET 1 OF 1