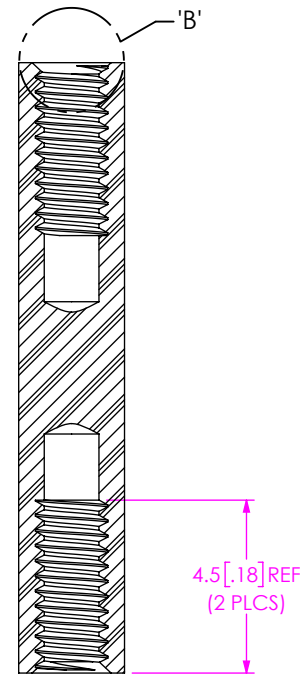
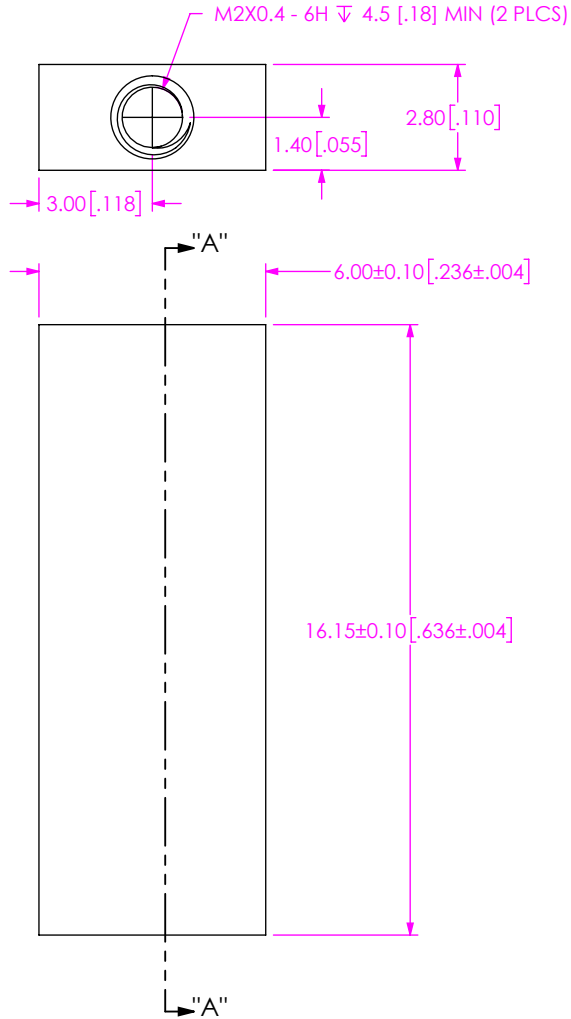


DO NOT
SCALE FROM
THIS PRINT

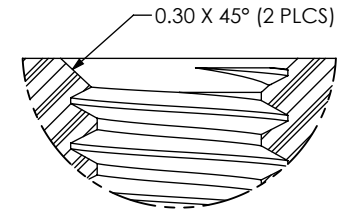
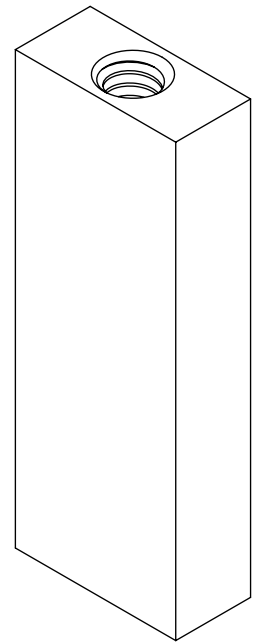
NOTES:

1. REPRESENTS A CRITICAL DIMENSION.
2. NO LOCKING COMPOUND ON THREADS.
3. BREAK ALL SHARP EDGES UNLESS OTHERWISE SPECIFIED.
4. PART TO BE FREE OF ANY TOOLING LUBRICANTS, OILS, RESIDUE.
5. TORQUE TO 0.2 - 0.3 NM (1.8 - 2.7 IN-LBS) TO SECURE FASTENER IN A STATIC ENVIRONMENT ASSUMING RECOMMENDED BOARD TO BOARD DISTANCES ARE ACHIEVED WITHOUT DAMAGE TO THE PCB, HARDWARE OR OTHER COMPONENTS.
6. PARTS TO BE PACKAGED IN BULK.

DESIGNED & DIMENSIONED
IN MILLIMETERS [INCHES]



SECTION "A"- "A"



DETAIL 'B'
SCALE 15:1

UNLESS OTHERWISE SPECIFIED,
DIMENSIONS ARE IN MILLIMETERS.
TOLERANCES ARE:
DECIMALS ANGLES
X.X: ± 0.3 [.01] 2°
X.XX: ± 0.05 [.002]
X.XXX: ± 0.025 [0.0010]

PROPRIETARY NOTE
* THIS DOCUMENT CONTAINS CONFIDENTIAL AND PROPRIETARY INFORMATION AND ALL DESIGN, MANUFACTURING, REPRODUCTION, USE, PATENT RIGHTS AND SALES RIGHTS ARE EXPRESSLY RESERVED BY SAMTEC, INC. THIS DOCUMENT SHALL NOT BE DISCLOSED, IN WHOLE OR PART, TO ANY UNAUTHORIZED PERSON OR ENTITY NOR REPRODUCED, TRANSFERRED OR INCORPORATED IN ANY OTHER PROJECT IN ANY MANNER WITHOUT THE EXPRESS WRITTEN CONSENT OF SAMTEC, INC.



520 PARK EAST BLVD, NEW ALBANY, IN 47150
PHONE: 812-944-6733 FAX: 812-948-5047
e-Mail: info@SAMTEC.com code 55322

MATERIAL: DO NOT SCALE DRAWING SHEET SCALE: 5:1
304 STAINLESS STEEL

DESCRIPTION:
SEAX 6X19 VITA 88 XMC+ STANDOFF

DWG. NO. ASP-213699-03-C

BY: BEHAGG 09/25/2019 SHEET 1 OF 1