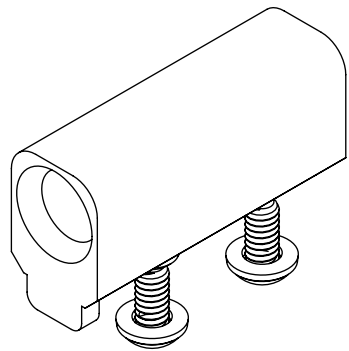
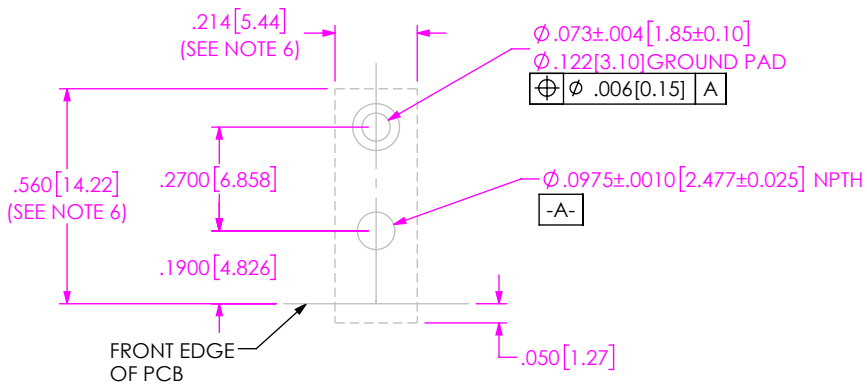
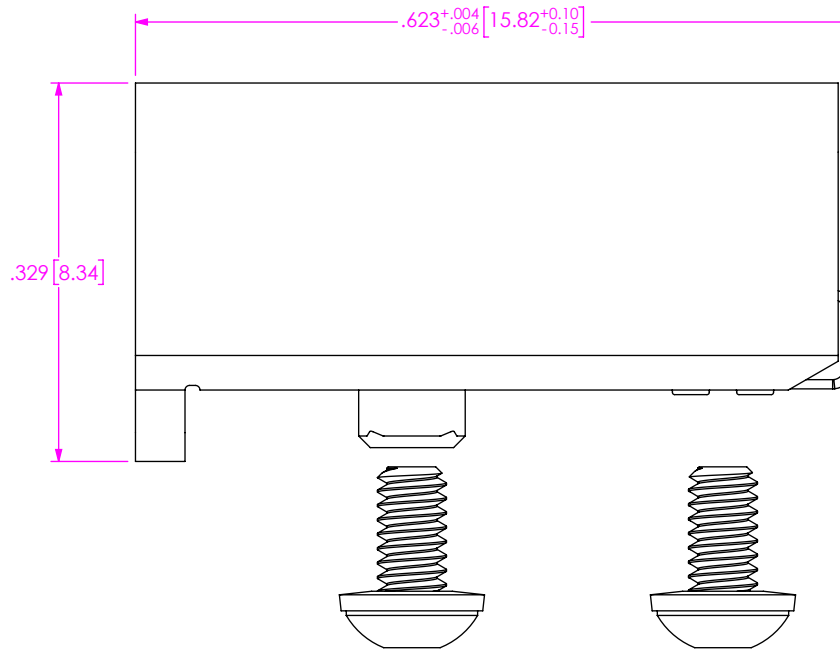
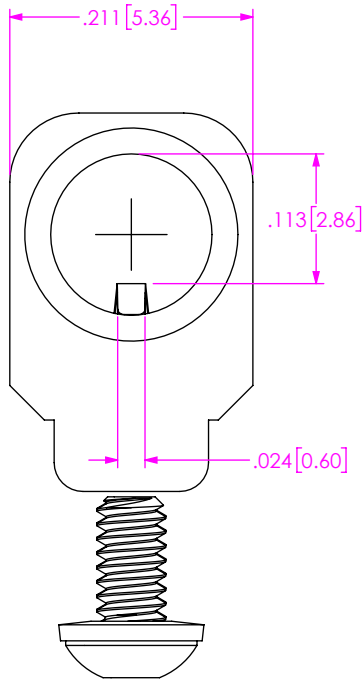


1. VITA 90 GUIDANCE RECEPTACLE.
2. MINIMUM PUSHOUT FORCE: 1.00 LBS.
3. PARTS TO BE PACKAGED IN KITS ACCORDING TO THE SAMTEC PACKAGING MANUAL.
4. SCREWS AND LOCK WASHERS TO BE PACKAGED SEPARATELY.
5. TORQUE TO 2.5 - 3.5 IN*lbs TO SECURE FASTENER IN A STATIC ENVIRONMENT.
6. CONNECTOR ENVELOPE DIMENSIONS. OTHER COMPONENTS PLACED ON PCB SHALL AVOID THIS ZONE.
7. USE INSERTION TOOL CAT-IN-VNX-GPRA TO PRESS THE ASSEMBLY ONTO THE BOARD.

DO NOT
SCALE FROM
THIS PRINT



**DESIGNED AND DIMENSIONED IN INCHES
ALL DIMENSIONS REFERENCE EXCEPT AS SHOWN**



RECOMMENDED PCB LAYOUT

PROPRIETARY NOTE

THIS DOCUMENT CONTAINS CONFIDENTIAL AND PROPRIETARY INFORMATION AND ALL DESIGN, MANUFACTURING, REPRODUCTION, USE, PATENT RIGHTS AND SALES RIGHTS ARE EXPRESSLY RESERVED BY SAMTEC, INC. THIS DOCUMENT SHALL NOT BE DISCLOSED, IN WHOLE OR PART, TO ANY UNAUTHORIZED PERSON OR ENTITY NOR REPRODUCED, TRANSFERRED OR INCORPORATED IN ANY OTHER PROJECT IN ANY MANNER WITHOUT THE EXPRESS WRITTEN CONSENT OF SAMTEC, INC.

DO NOT SCALE DRAWING
SHEET SCALE: 6:1

MATERIAL: COPPER ALLOY/STEEL/ZINC
PLATING:
CONTACT: .000050 NICKEL PLATING
HOUSING: .000100 NICKEL PLATING

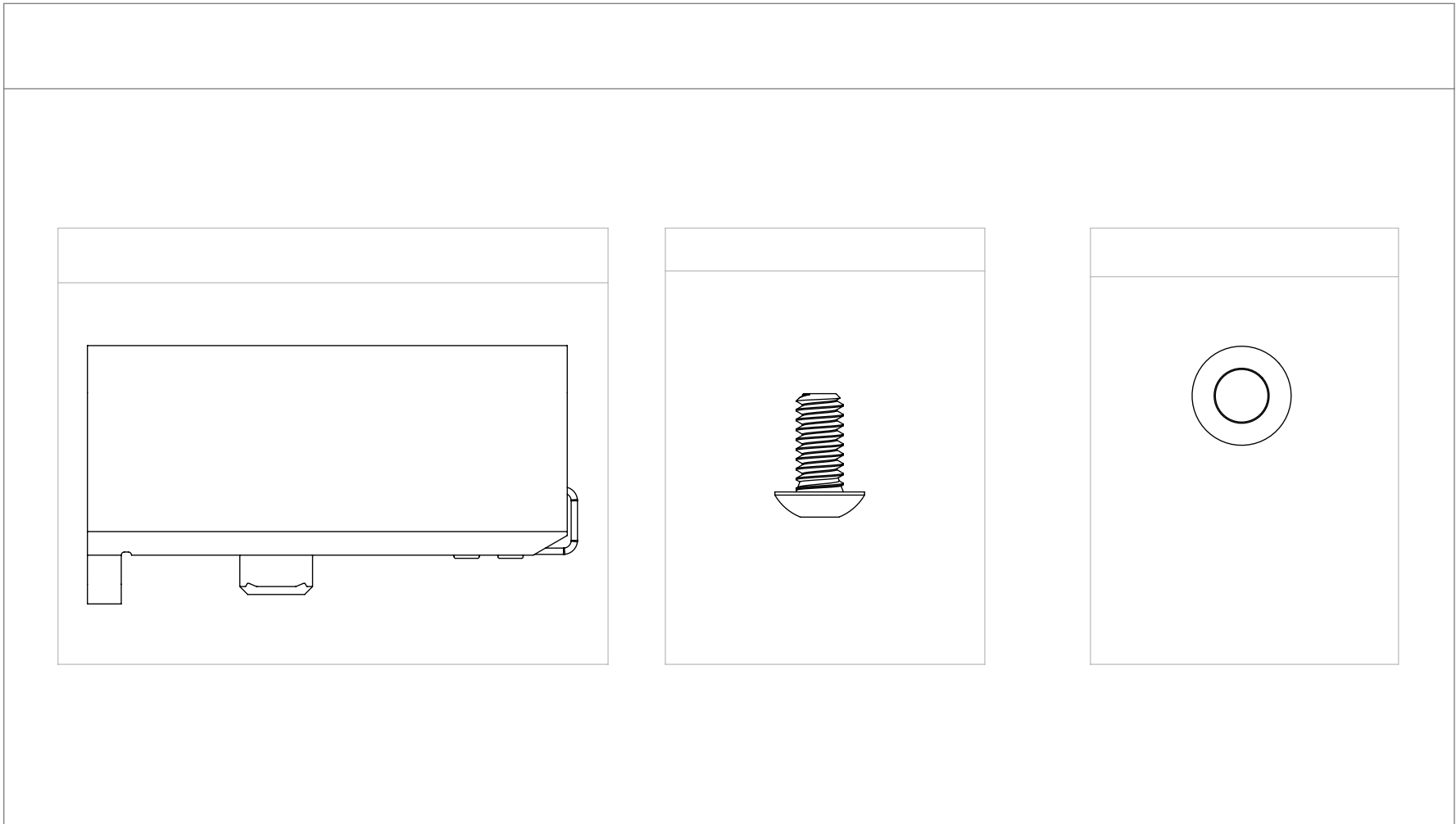


520 PARK EAST BLVD. NEW ALBANY, IN 47150
PHONE: 812-944-6733 FAX: 812-948-5047
e-Mail info@SAMTEC.com code 55322

DESCRIPTION: VNX+ GUIDANCE RECEPTACLE

DWG. NO. ASP-222864-01

BY: ANDREW W 03/30/2021 SHEET 1 OF 2



PACKAGING VIEW
NOT TO SCALE
 (ONLY ONE ITEM SHOWN PER BAG FOR CLARITY ONLY)

<p style="text-align: center;">* PROPRIETARY NOTE *</p> <p style="font-size: small;">THIS DOCUMENT CONTAINS CONFIDENTIAL AND PROPRIETARY INFORMATION AND ALL DESIGN, MANUFACTURING, REPRODUCTION, USE, PATENT RIGHTS AND SALES RIGHTS ARE EXPRESSLY RESERVED BY SAMTEC, INC. THIS DOCUMENT SHALL NOT BE DISCLOSED, IN WHOLE OR PART, TO ANY UNAUTHORIZED PERSON OR ENTITY NOR REPRODUCED, TRANSFERRED OR INCORPORATED IN ANY OTHER PROJECT IN ANY MANNER WITHOUT THE EXPRESS WRITTEN CONSENT OF SAMTEC, INC.</p>	<p style="text-align: center;">samtec</p> <p style="font-size: x-small;">520 PARK EAST BLVD, NEW ALBANY, IN 47150 PHONE: 812-944-6733 FAX: 812-948-5047 e-Mail info@SAMTEC.com code 55322</p>
<p style="text-align: center;">SHEET SCALE: 5:1</p>	<p>DESCRIPTION: VNX+ GUIDANCE RECEPTACLE</p>
<p>F:\DWG\SW\ASP\222000\ASP-222864-01.SLDDRW</p>	<p>DWG. NO. ASP-222864-01</p> <p>BY: ANDREW W 03/30/2021 SHEET 2 OF 2</p>