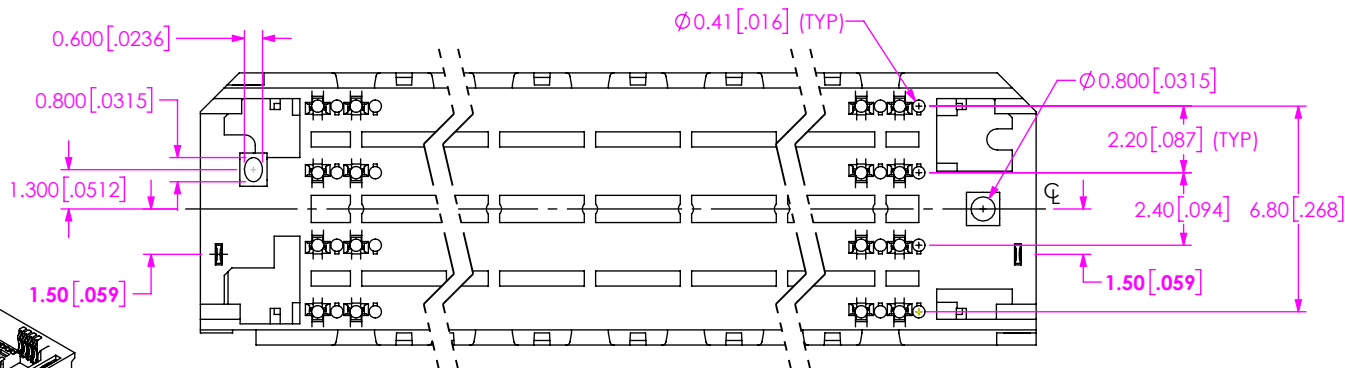
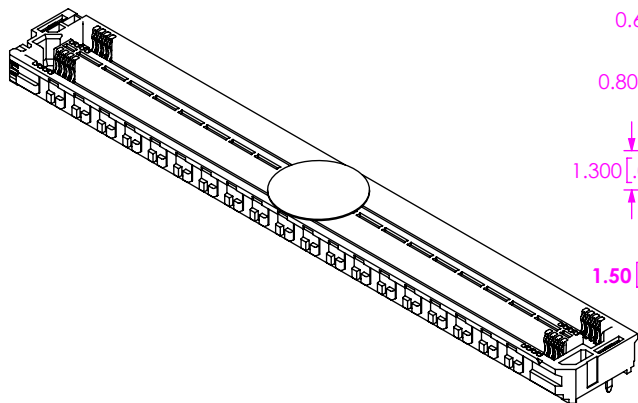
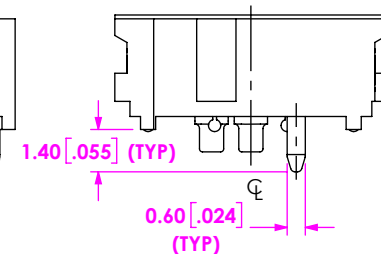
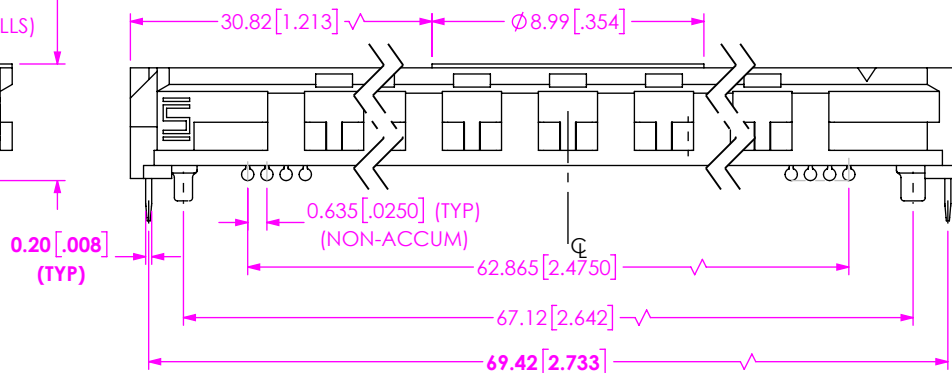
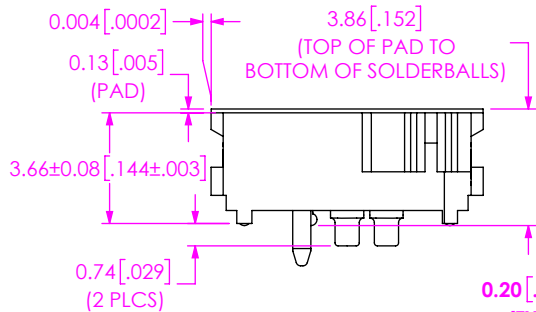
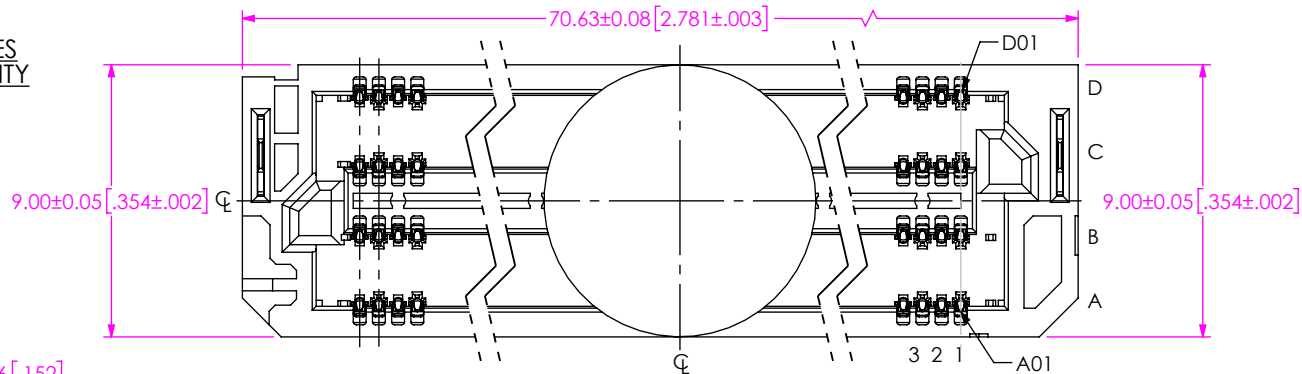


DO NOT SCALE FROM THIS PRINT

SOME CENTER FEATURES NOT SHOWN FOR CLARITY

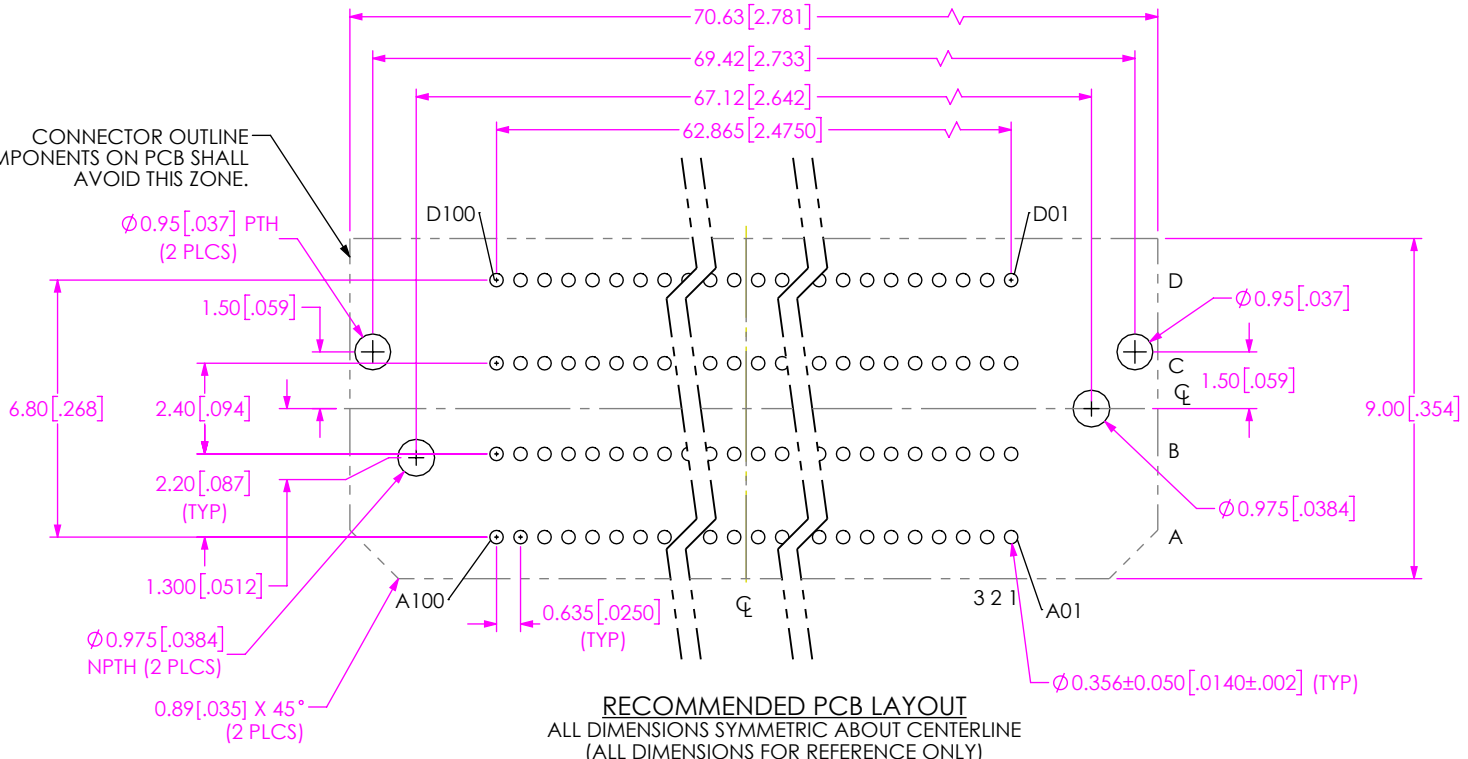


- NOTES:
1. MINIMUM PUSH OUT FORCE 1.6N FOR TERMINALS. MINIMUM RETENTION FORCE 4.45N FOR WELD TAB.
 2. SEE SHT 2 FOR PROCESSING INFORMATION.
 3. PARTS TO BE PACKAGED IN TAPE & REEL.
 4. ATTACH LABEL -4X2 TO EACH REEL.
 5. ORDERS WILL BE PACKAGED ACCORDING TO THE SAMTEC PACKAGING EFFICIENCY STANDARDS (SPES) FOUND ON WWW.SAMTEC.COM.

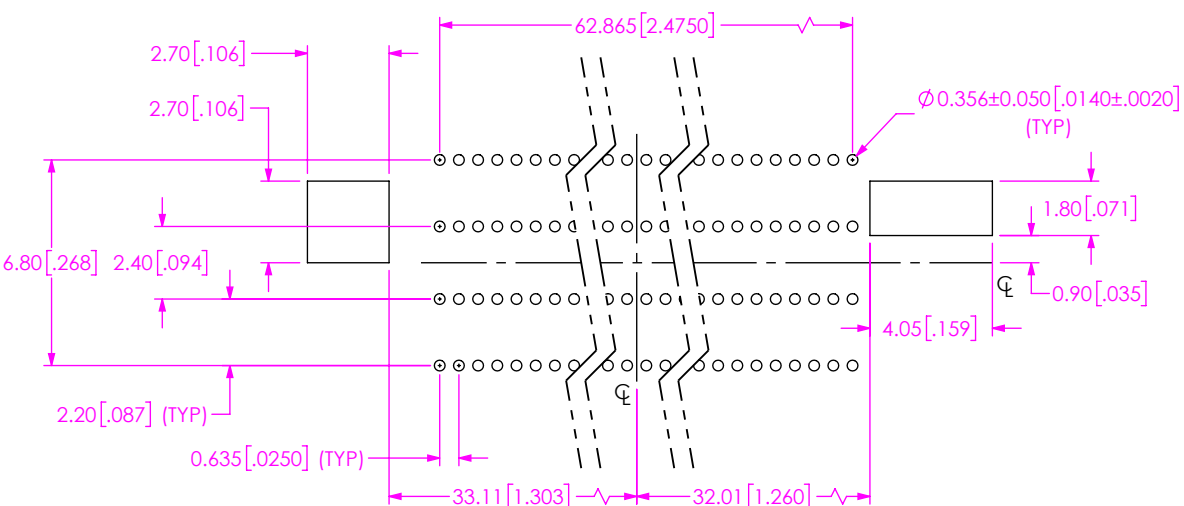
FIG 1
(ASP-230332-01 SHOWN)

<p>PROPRIETARY NOTE</p> <p>THIS DOCUMENT CONTAINS CONFIDENTIAL AND PROPRIETARY INFORMATION AND ALL DESIGN, MANUFACTURING, REPRODUCTION, USE, PATENT RIGHTS AND SALES RIGHTS ARE EXPRESSLY RESERVED BY SAMTEC, INC. THIS DOCUMENT SHALL NOT BE DISCLOSED, IN WHOLE OR PART, TO ANY UNAUTHORIZED PERSON OR ENTITY NOR REPRODUCED, TRANSFERRED OR INCORPORATED IN ANY OTHER PROJECT IN ANY MANNER WITHOUT THE EXPRESS WRITTEN CONSENT OF SAMTEC, INC.</p>		<p>samtec</p> <p>520 PARK EAST BLVD, NEW ALBANY, IN 47150 PHONE: 812-944-6733 FAX: 812-948-5047 e-Mail: info@SAMTEC.com code 53322</p>
<p>DO NOT SCALE DRAWING</p> <p>MATERIAL: INSULATOR: LCP, COLOR NATURAL CONTACT: COPPER ALLOY WELD TAB: COPPER ALLOY</p>	<p>SHEET SCALE: 4:1</p>	
<p>DESCRIPTION: CUSTOM COM HPC FEMALE ASSEMBLY</p>		<p>DWG. NO. ASP-230332-01</p>
<p>BY: JACK Z</p>		<p>1/12/2023 SHEET 1 OF 9</p>

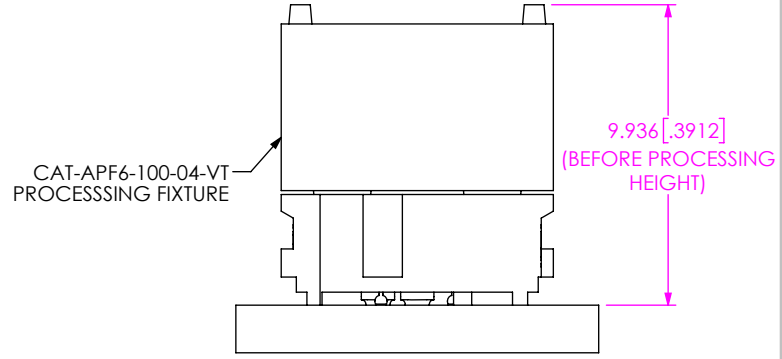
CONNECTOR OUTLINE
OTHER COMPONENTS ON PCB SHALL
AVOID THIS ZONE.



RECOMMENDED PCB LAYOUT
ALL DIMENSIONS SYMMETRIC ABOUT CENTERLINE
(ALL DIMENSIONS FOR REFERENCE ONLY)



RECOMMENDED STENCIL LAYOUT
ALL DIMENSIONS SYMMETRIC ABOUT CENTERLINE
(STENCIL TO BE 0.125 [0.0050] THICK)



PROCESSING VIEW
DIMENSION INDICATES CONNECTOR/FIXTURE HEIGHT ON PCB
TO GUARANTEE ENOUGH REFLOW OVEN WORKING SPACE.
DIMENSION, PCB THICKNESS, AND THE HEIGHT OF THE COMPONENTS
ON THE OTHER SIDE OF THE BOARD NEED TO BE CONSIDERED.

PROPRIETARY NOTE
THIS DOCUMENT CONTAINS CONFIDENTIAL AND
PROPRIETARY INFORMATION AND ALL DESIGN,
MANUFACTURING, REPRODUCTION, USE, PATENT RIGHTS
AND SALES RIGHTS ARE EXPRESSLY RESERVED BY SAMTEC,
INC. THIS DOCUMENT SHALL NOT BE DISCLOSED, IN WHOLE
OR PART, TO ANY UNAUTHORIZED PERSON OR ENTITY NOR
REPRODUCED, TRANSFERRED OR INCORPORATED IN ANY
OTHER PROJECT IN ANY MANNER WITHOUT THE EXPRESS
WRITTEN CONSENT OF SAMTEC, INC.



520 PARK EAST BLVD, NEW ALBANY, IN 47150
PHONE: 812-944-6733 FAX: 812-948-5047
e-Mail: info@SAMTEC.com code 55322

SHEET SCALE: 2:1

DESCRIPTION:
CUSTOM COM HPC FEMALE ASSEMBLY

DWG. NO.
ASP-230332-01

BY: JACK Z 1/12/2023 SHEET 2 OF 9

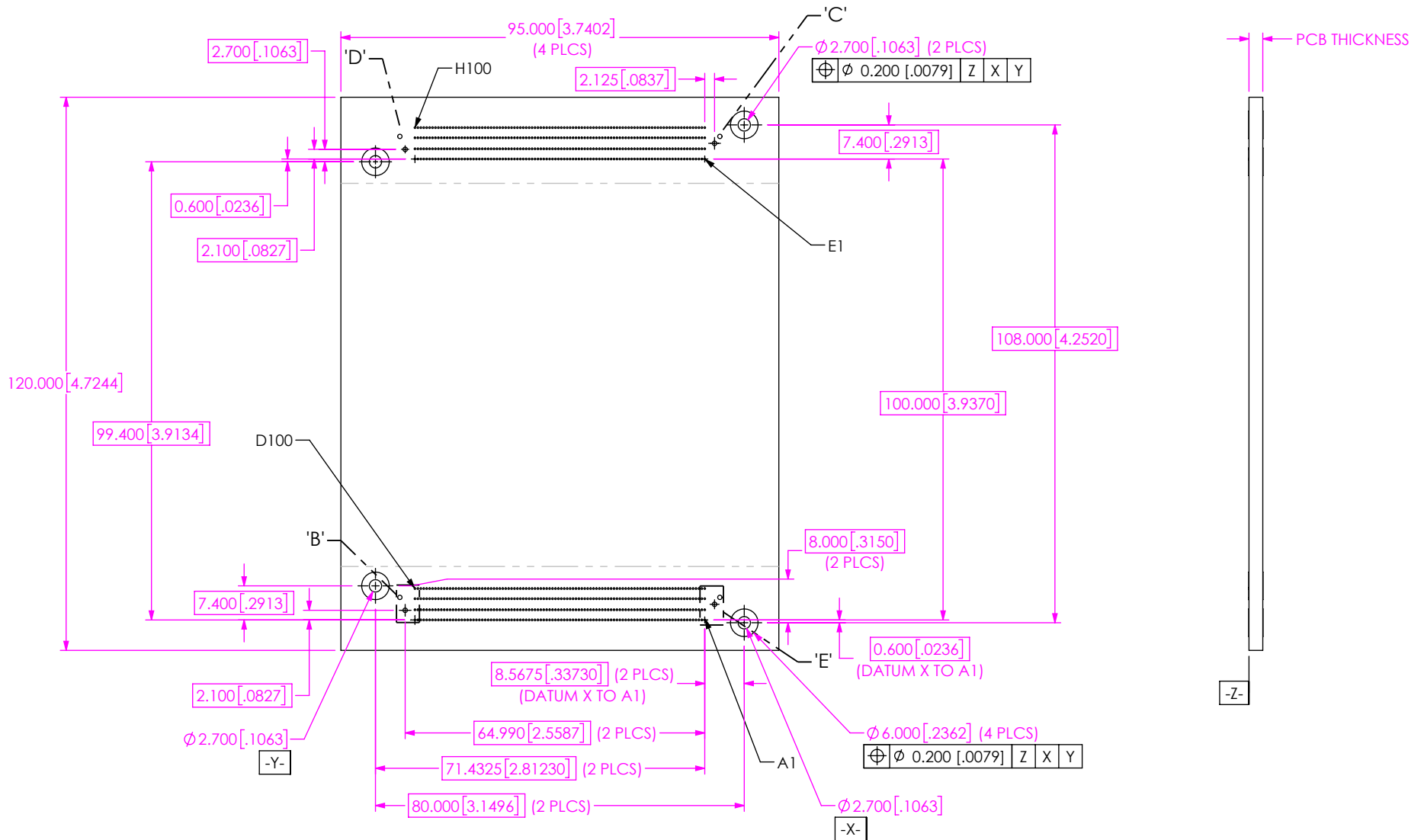
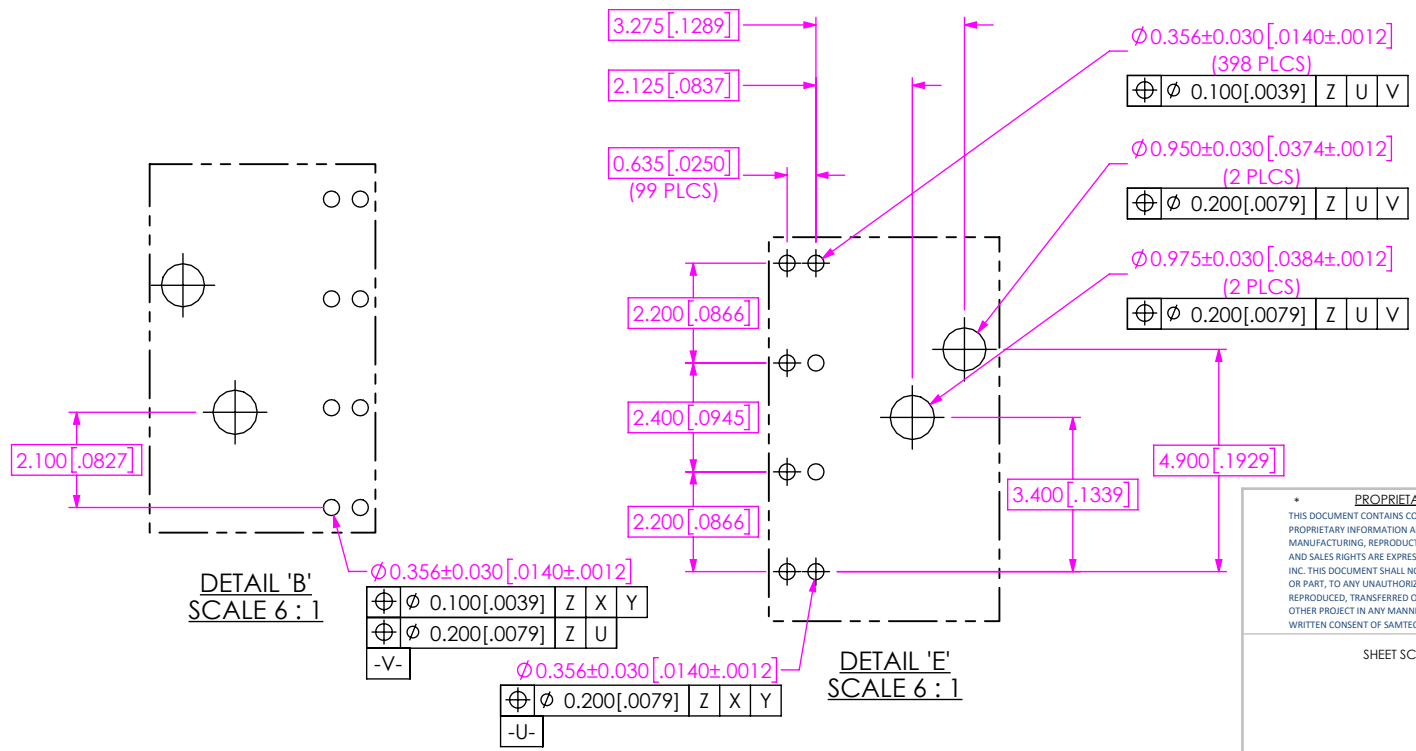
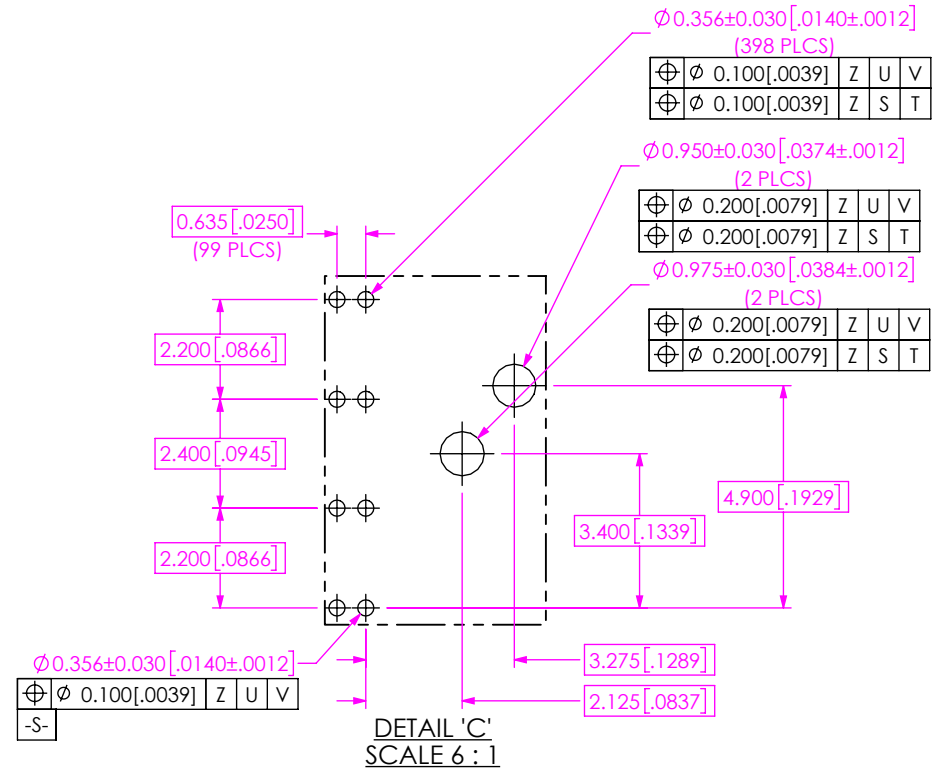
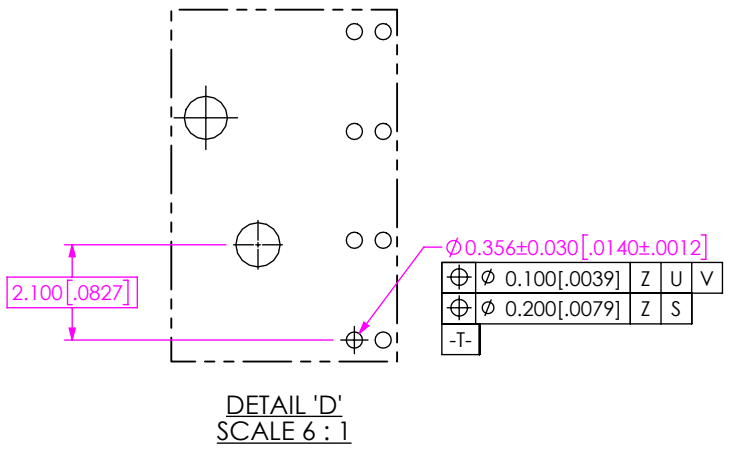


FIG 2
 COM-HPC® MODULE SIZE A
 ((RECOMMENDED PCB LAYOUT FOR COM-HPC®))

F:\DWG\SW\ASP\230000\ASP-230332-01.SLDDRW

<p>PROPRIETARY NOTE</p> <p>THIS DOCUMENT CONTAINS CONFIDENTIAL AND PROPRIETARY INFORMATION AND ALL DESIGN, MANUFACTURING, REPRODUCTION, USE, PATENT RIGHTS AND SALES RIGHTS ARE EXPRESSLY RESERVED BY SAMTEC, INC. THIS DOCUMENT SHALL NOT BE DISCLOSED, IN WHOLE OR PART, TO ANY UNAUTHORIZED PERSON OR ENTITY NOR REPRODUCED, TRANSFERRED OR INCORPORATED IN ANY OTHER PROJECT IN ANY MANNER WITHOUT THE EXPRESS WRITTEN CONSENT OF SAMTEC, INC.</p>	<p>samtec</p> <p>520 PARK EAST BLVD., NEW ALBANY, IN 47150 PHONE: 812-944-6733 FAX: 812-948-5047 e-Mail info@SAMTEC.com code 55322</p>	
	<p>DESCRIPTION: CUSTOM COM HPC FEMALE ASSEMBLY</p>	
	<p>DWG. NO.</p> <p>ASP-230332-01</p>	<p>BY: JACK Z</p> <p>1/12/2023</p>



<p>PROPRIETARY NOTE</p> <p>THIS DOCUMENT CONTAINS CONFIDENTIAL AND PROPRIETARY INFORMATION AND ALL DESIGN, MANUFACTURING, REPRODUCTION, USE, PATENT RIGHTS AND SALES RIGHTS ARE EXPRESSLY RESERVED BY SAMTEC, INC. THIS DOCUMENT SHALL NOT BE DISCLOSED, IN WHOLE OR PART, TO ANY UNAUTHORIZED PERSON OR ENTITY NOR REPRODUCED, TRANSFERRED OR INCORPORATED IN ANY OTHER PROJECT IN ANY MANNER WITHOUT THE EXPRESS WRITTEN CONSENT OF SAMTEC, INC.</p>	<p>520 PARK EAST BLVD, NEW ALBANY, IN 47150 PHONE: 812-944-6733 FAX: 812-948-5047 e-Mail info@SAMTEC.com code 55322</p>
	<p>DESCRIPTION: CUSTOM COM HPC FEMALE ASSEMBLY</p>
	<p>DWG. NO. ASP-230332-01</p>
<p>SHEET SCALE: 2:1</p>	<p>BY: JACK Z 1/12/2023 SHEET 4 OF 9</p>

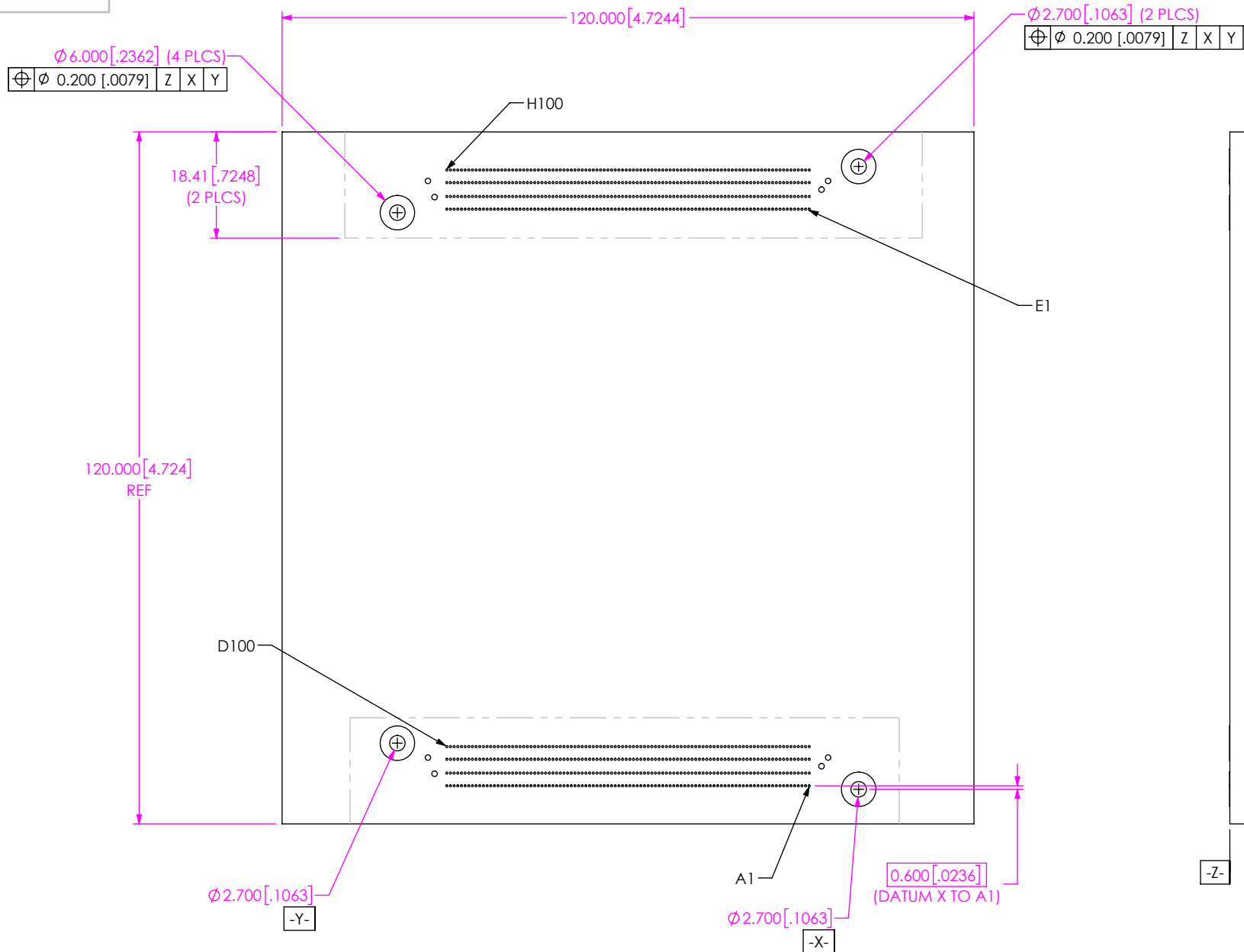


FIG 3
 COM-HPC[®] MODULE SIZE B
 (SAME AS FIG 2, EXCEPT AS SHOWN)
 (RECOMMENDED PCB LAYOUT FOR COM-HPC)

<p>PROPRIETARY NOTE</p> <p>THIS DOCUMENT CONTAINS CONFIDENTIAL AND PROPRIETARY INFORMATION AND ALL DESIGN, MANUFACTURING, REPRODUCTION, USE, PATENT RIGHTS AND SALES RIGHTS ARE EXPRESSLY RESERVED BY SAMTEC, INC. THIS DOCUMENT SHALL NOT BE DISCLOSED, IN WHOLE OR PART, TO ANY UNAUTHORIZED PERSON OR ENTITY NOR REPRODUCED, TRANSFERRED OR INCORPORATED IN ANY OTHER PROJECT IN ANY MANNER WITHOUT THE EXPRESS WRITTEN CONSENT OF SAMTEC, INC.</p>	<p>520 PARK EAST BLVD., NEW ALBANY, IN 47150 PHONE: 812-944-6733 FAX: 812-948-5047 e-Mail info@SAMTEC.com code 55322</p>	
	<p>DESCRIPTION: CUSTOM COM HPC FEMALE ASSEMBLY</p>	
	<p>SHEET SCALE: 2:1</p>	<p>DWG. NO. ASP-230332-01</p>
<p>BY: JACK Z</p>		<p>1/12/2023 SHEET 5 OF 9</p>

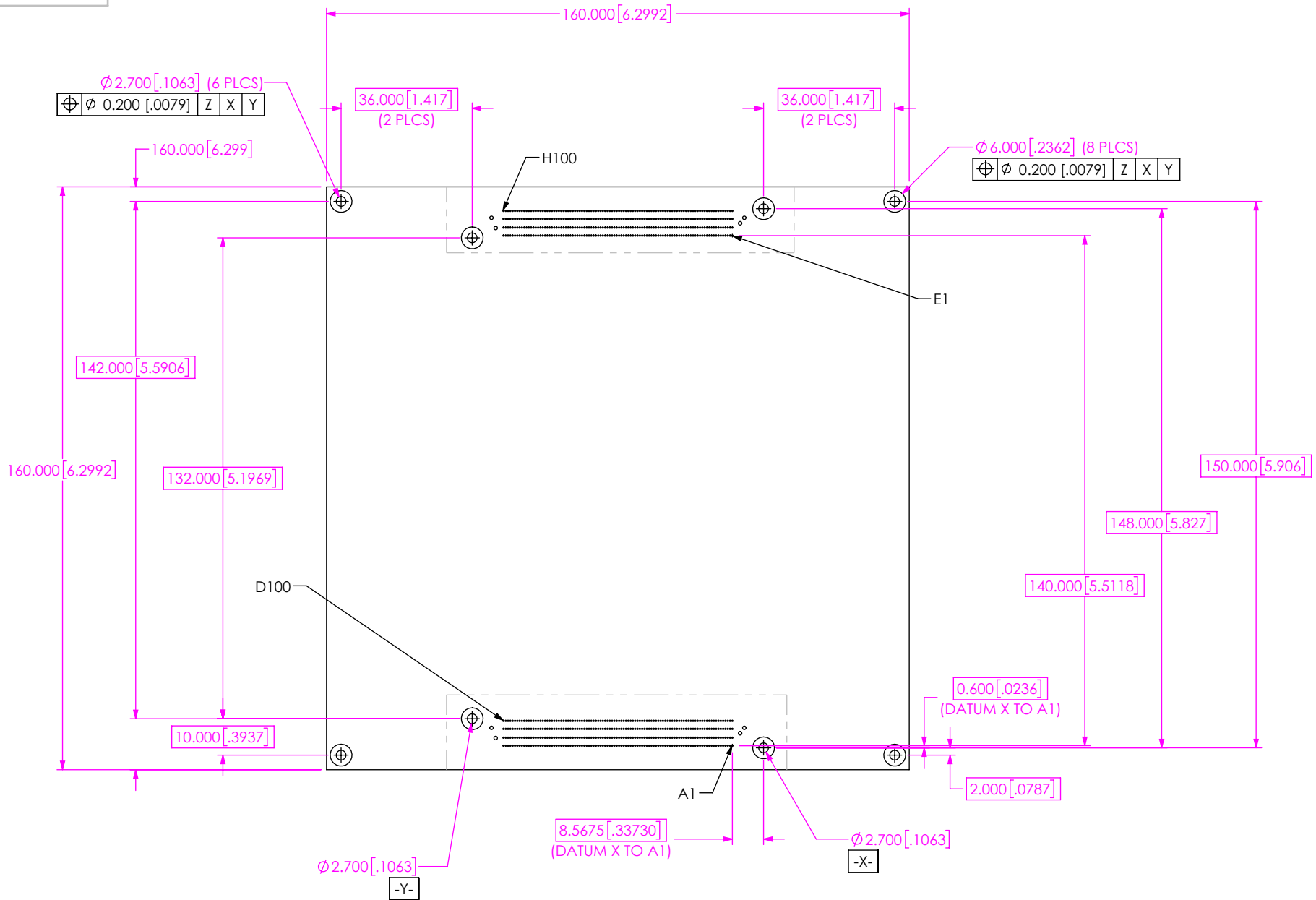


FIG 5
 COM-HPC® MODULE SIZE D
 (SAME AS FIG 2, EXCEPT AS SHOWN)
 (RECOMMENDED PCB LAYOUT FOR COM-HPC®)

F:\DWG\SW\ASP\230000\ASP-230332-01.SLDDRW

<p>PROPRIETARY NOTE</p> <p>THIS DOCUMENT CONTAINS CONFIDENTIAL AND PROPRIETARY INFORMATION AND ALL DESIGN, MANUFACTURING, REPRODUCTION, USE, PATENT RIGHTS AND SALES RIGHTS ARE EXPRESSLY RESERVED BY SAMTEC, INC. THIS DOCUMENT SHALL NOT BE DISCLOSED, IN WHOLE OR PART, TO ANY UNAUTHORIZED PERSON OR ENTITY NOR REPRODUCED, TRANSFERRED OR INCORPORATED IN ANY OTHER PROJECT IN ANY MANNER WITHOUT THE EXPRESS WRITTEN CONSENT OF SAMTEC, INC.</p>	<p>samtec</p> <p>520 PARK EAST BLVD, NEW ALBANY, IN 47150 PHONE: 812-944-6733 FAX: 812-948-5047 e-Mail info@SAMTEC.com code 55322</p>	
	<p>DESCRIPTION: CUSTOM COM HPC FEMALE ASSEMBLY</p>	
	<p>DWG. NO. ASP-230332-01</p>	
<p>SHEET SCALE: 2:1</p>		<p>BY: JACK Z 1/12/2023 SHEET 7 OF 9</p>

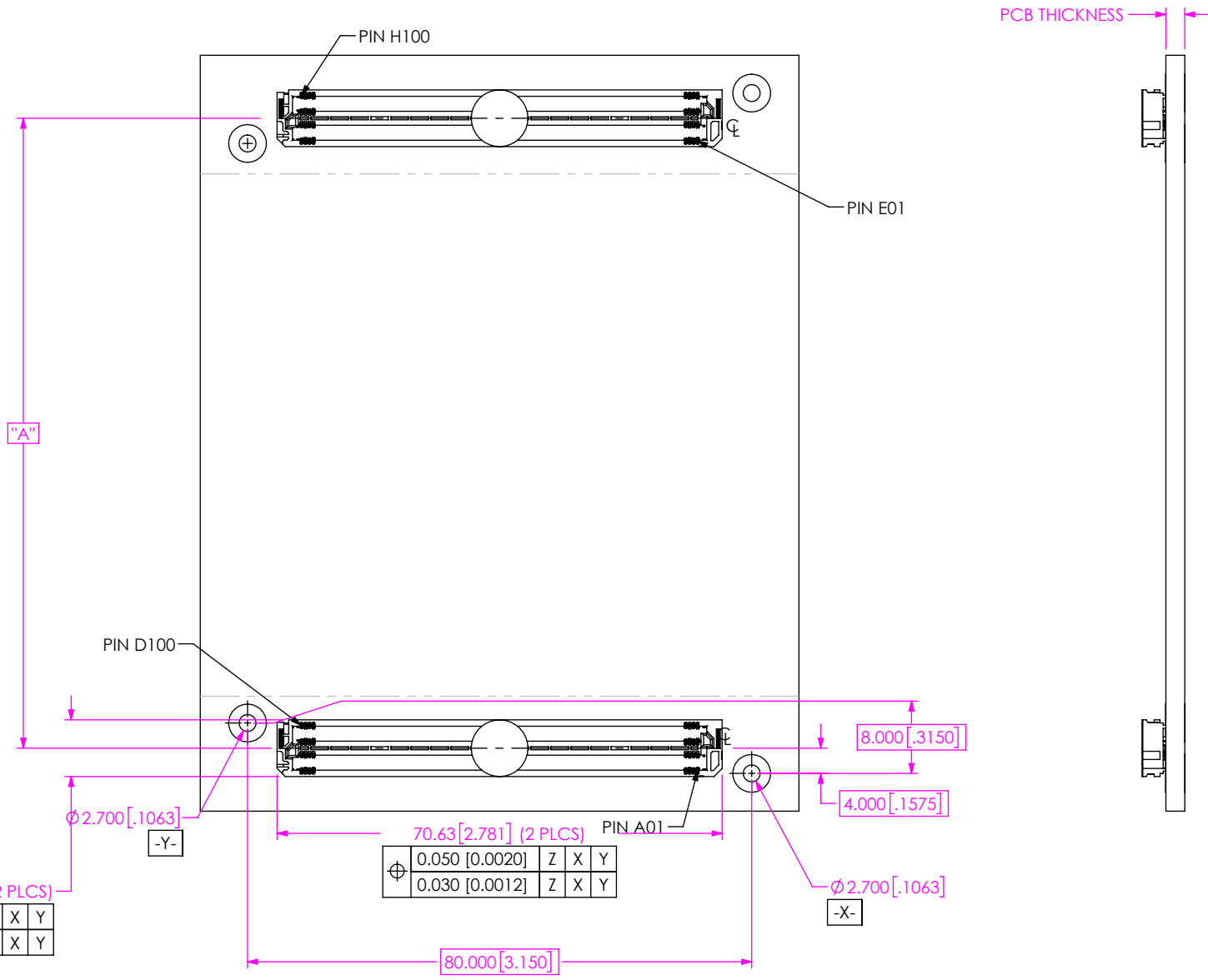


FIG 7
COM-HPC® ASSEMBLY APPLICATION (SIZE A)
(RECOMMENDED ASP-230332-01 LAYOUT FOR COM-HPC®)

⊕	0.050 [0.0020]	Z	X	Y
	0.030 [0.0012]	Z	X	Y

COM-HPC® MODULE	"A"
SIZE A	100.000 [3.937]
SIZE B	100.000 [3.937]
SIZE C	100.000 [3.937]
SIZE D	140.000 [5.512]
SIZE E	140.000 [5.512]

PROPRIETARY NOTE

THIS DOCUMENT CONTAINS CONFIDENTIAL AND PROPRIETARY INFORMATION AND ALL DESIGN, MANUFACTURING, REPRODUCTION, USE, PATENT RIGHTS AND SALES RIGHTS ARE EXPRESSLY RESERVED BY SAMTEC, INC. THIS DOCUMENT SHALL NOT BE DISCLOSED, IN WHOLE OR PART, TO ANY UNAUTHORIZED PERSON OR ENTITY NOR REPRODUCED, TRANSFERRED OR INCORPORATED IN ANY OTHER PROJECT IN ANY MANNER WITHOUT THE EXPRESS WRITTEN CONSENT OF SAMTEC, INC.

SHEET SCALE: 2:1

samtec

520 PARK EAST BLVD., NEW ALBANY, IN 47150
PHONE: 812-944-6733 FAX: 812-948-5047
e-Mail info@SAMTEC.com code 55322

DESCRIPTION:
CUSTOM COM HPC FEMALE ASSEMBLY

DWG. NO.
ASP-230332-01

BY: JACK Z 1/12/2023 SHEET 9 OF 9