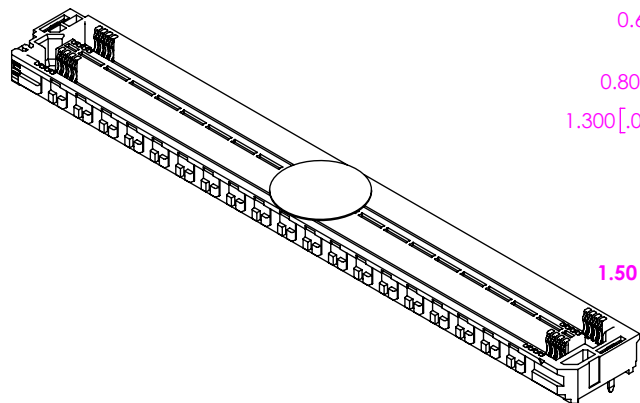
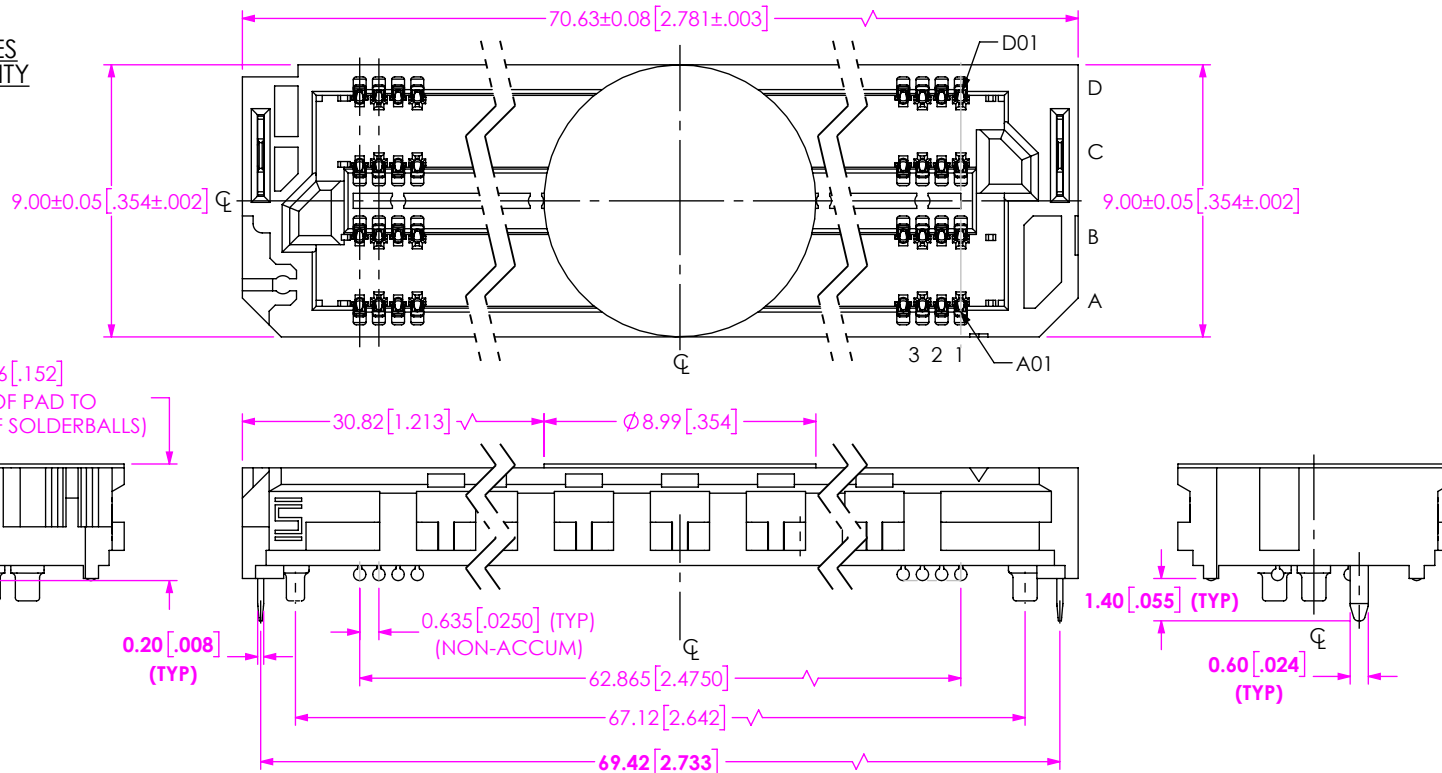


DO NOT  
SCALE FROM  
THIS PRINT

SOME CENTER FEATURES  
NOT SHOWN FOR CLARITY

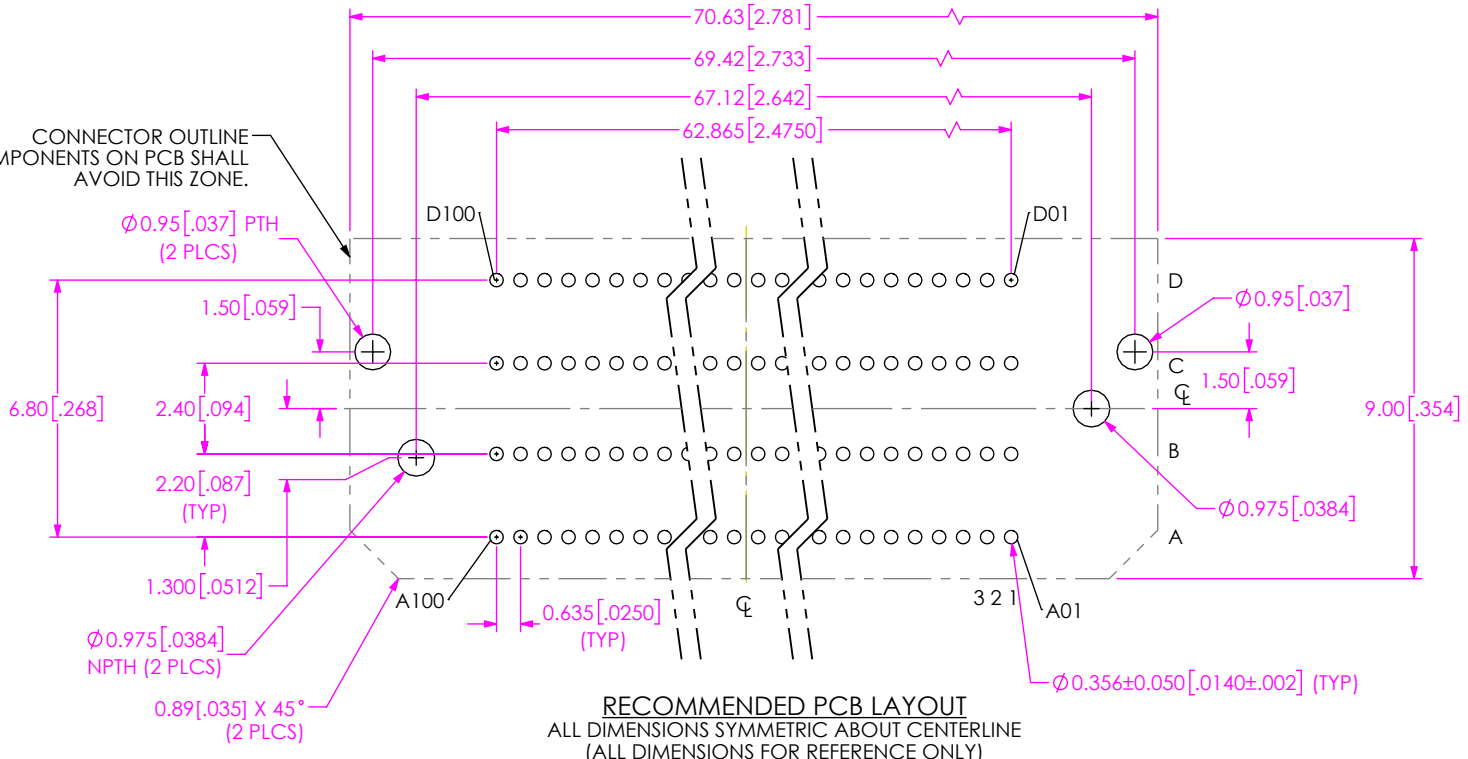


- NOTES:
1. MINIMUM PUSH OUT FORCE 1.6N FOR TERMINALS. MINIMUM RETENTION FORCE 4.45N FOR WELD TAB.
  2. SEE SHT 2 FOR PROCESSING INFORMATION.
  3. PARTS TO BE PACKAGED IN TAPE & REEL.
  4. ATTACH LABEL -4X2 TO EACH REEL.
  5. ORDERS WILL BE PACKAGED ACCORDING TO THE SAMTEC PACKAGING EFFICIENCY STANDARDS (SPES) FOUND ON WWW.SAMTEC.COM.

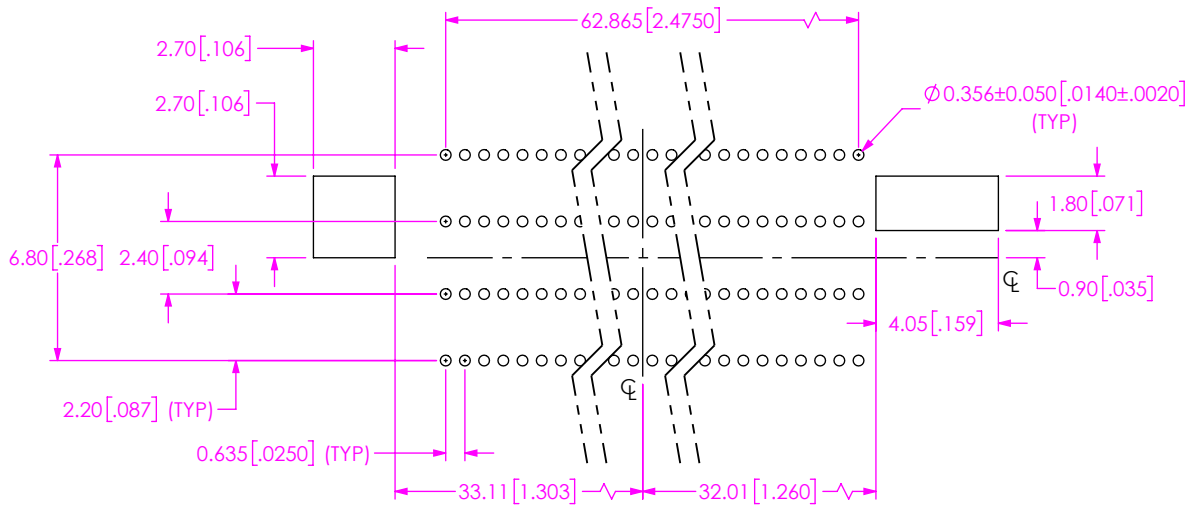
FIG 1  
(ASP-230332-02 SHOWN)

<p><b>PROPRIETARY NOTE</b></p> <p>THIS DOCUMENT CONTAINS CONFIDENTIAL AND PROPRIETARY INFORMATION AND ALL DESIGN, MANUFACTURING, REPRODUCTION, USE, PATENT RIGHTS AND SALES RIGHTS ARE EXPRESSLY RESERVED BY SAMTEC, INC. THIS DOCUMENT SHALL NOT BE DISCLOSED, IN WHOLE OR PART, TO ANY UNAUTHORIZED PERSON OR ENTITY NOR REPRODUCED, TRANSFERRED OR INCORPORATED IN ANY OTHER PROJECT IN ANY MANNER WITHOUT THE EXPRESS WRITTEN CONSENT OF SAMTEC, INC.</p>		<p><b>samtec</b></p> <p>520 PARK EAST BLVD, NEW ALBANY, IN 47150 PHONE: 812-944-6733 FAX: 812-948-5047 e-Mail: info@SAMTEC.COM code 53322</p>
<p>DO NOT SCALE DRAWING</p> <p>MATERIAL: INSULATOR: LCP, COLOR NATURAL CONTACT: COPPER ALLOY WELD TAB: COPPER ALLOY</p>	<p>SHEET SCALE: 4:1</p> <p>DESCRIPTION: CUSTOM COM HPC FEMALE ASSEMBLY</p>	
<p>PLATING: CONTACT AREA: .00030" REF GOLD REMAINDER: .000200" REF TIN WELD TAB: ENTIRE PIN: .000200" REF TIN</p>	<p>DWG. NO. <b>ASP-230332-02</b></p>	<p>BY: JACK Z 5/11/2023 SHEET 1 OF 9</p>

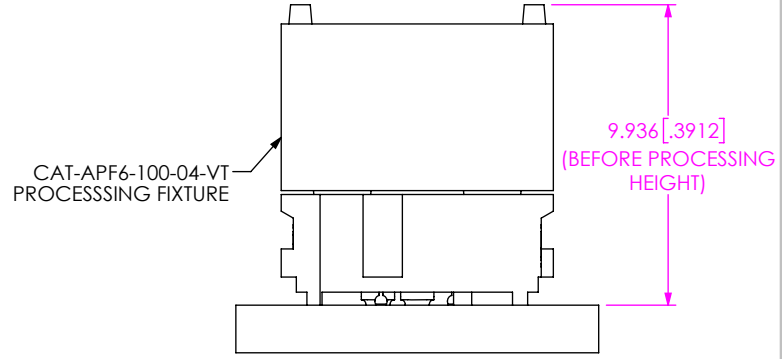
CONNECTOR OUTLINE  
OTHER COMPONENTS ON PCB SHALL  
AVOID THIS ZONE.



**RECOMMENDED PCB LAYOUT**  
ALL DIMENSIONS SYMMETRIC ABOUT CENTERLINE  
(ALL DIMENSIONS FOR REFERENCE ONLY)



**RECOMMENDED STENCIL LAYOUT**  
ALL DIMENSIONS SYMMETRIC ABOUT CENTERLINE  
(STENCIL TO BE 0.125 [0.0050] THICK)



**PROCESSING VIEW**  
DIMENSION INDICATES CONNECTOR/FIXTURE HEIGHT ON PCB  
TO GUARANTEE ENOUGH REFLOW OVEN WORKING SPACE.  
DIMENSION, PCB THICKNESS, AND THE HEIGHT OF THE COMPONENTS  
ON THE OTHER SIDE OF THE BOARD NEED TO BE CONSIDERED.

**PROPRIETARY NOTE**  
THIS DOCUMENT CONTAINS CONFIDENTIAL AND  
PROPRIETARY INFORMATION AND ALL DESIGN,  
MANUFACTURING, REPRODUCTION, USE, PATENT RIGHTS  
AND SALES RIGHTS ARE EXPRESSLY RESERVED BY SAMTEC,  
INC. THIS DOCUMENT SHALL NOT BE DISCLOSED, IN WHOLE  
OR PART, TO ANY UNAUTHORIZED PERSON OR ENTITY NOR  
REPRODUCED, TRANSFERRED OR INCORPORATED IN ANY  
OTHER PROJECT IN ANY MANNER WITHOUT THE EXPRESS  
WRITTEN CONSENT OF SAMTEC, INC.



520 PARK EAST BLVD, NEW ALBANY, IN 47150  
PHONE: 812-944-6733 FAX: 812-948-5047  
e-Mail: info@SAMTEC.com code 55322

SHEET SCALE: 2:1

DESCRIPTION:  
CUSTOM COM HPC FEMALE ASSEMBLY

DWG. NO.  
**ASP-230332-02**

BY: JACK Z 5/11/2023 SHEET 2 OF 9

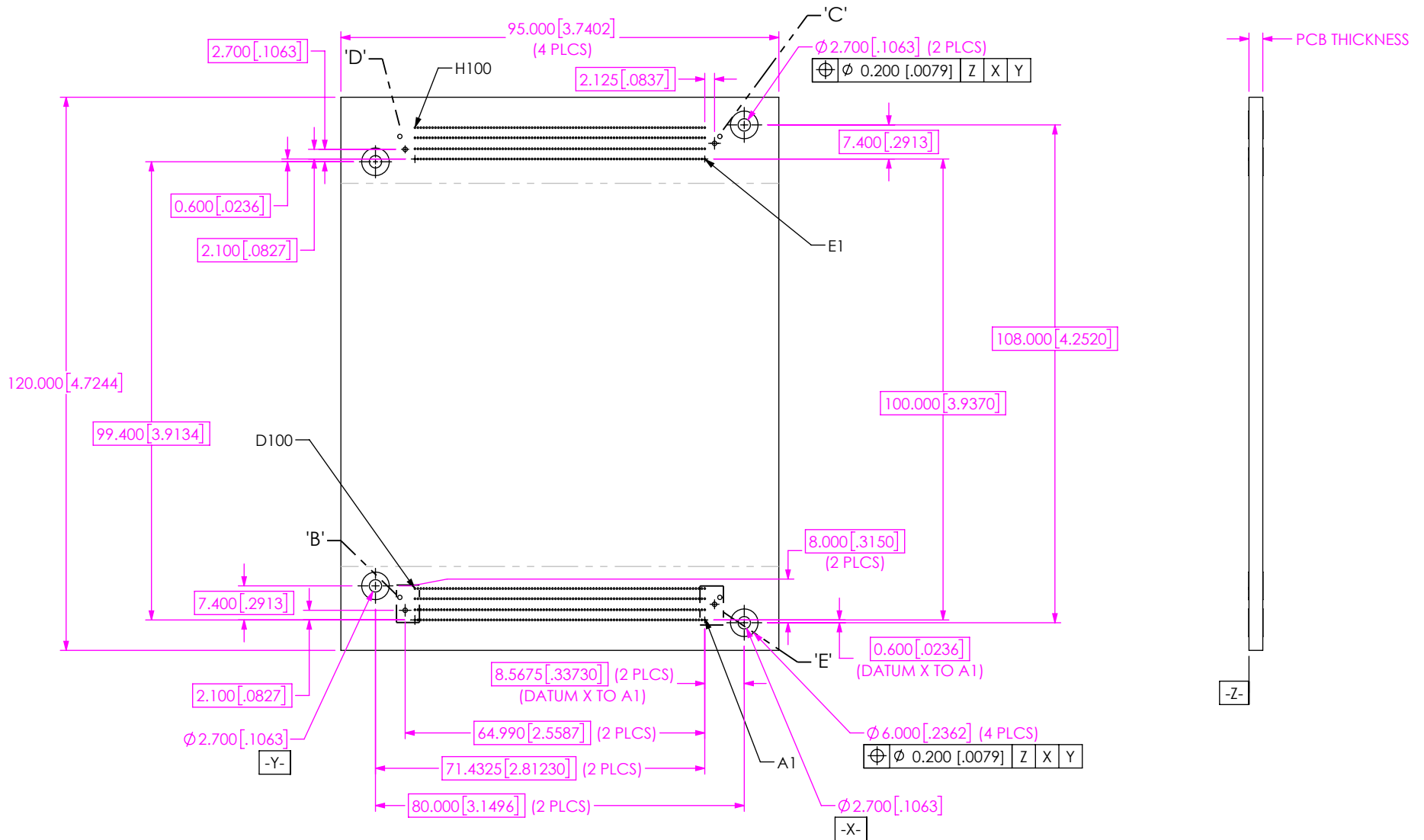
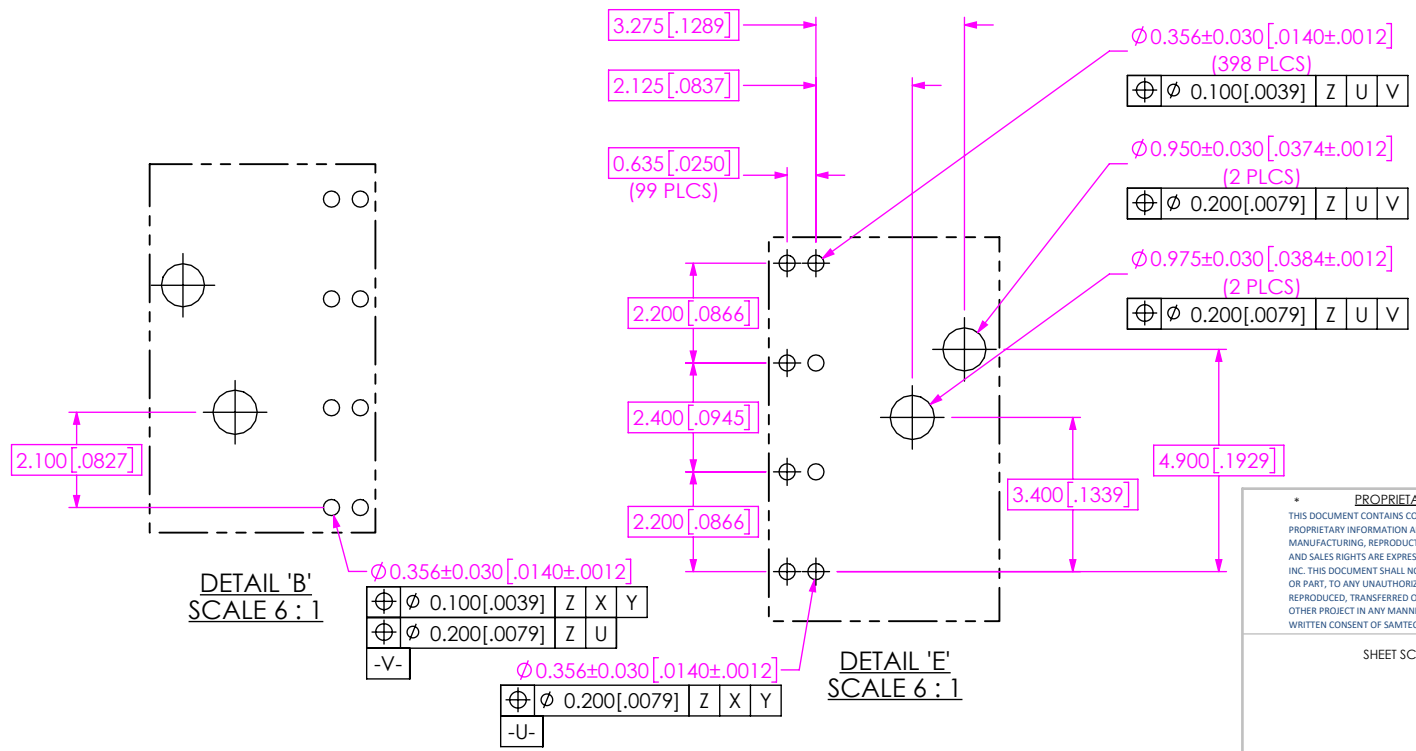
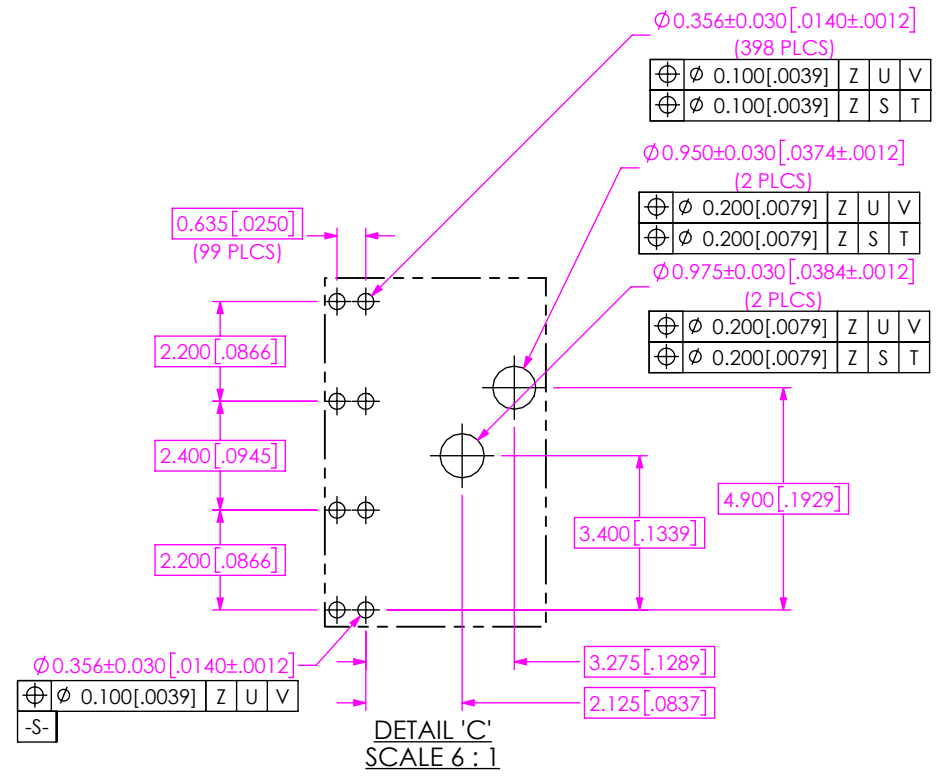
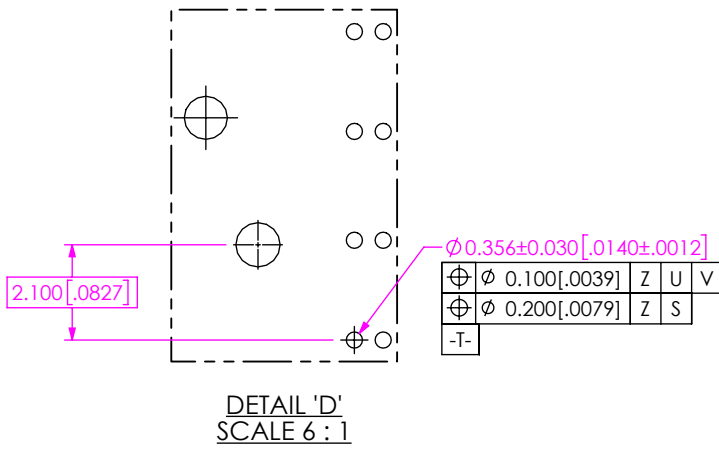


FIG 2  
COM-HPC® MODULE SIZE A  
((RECOMMENDED PCB LAYOUT FOR COM-HPC®))

<p><b>PROPRIETARY NOTE</b></p> <p>THIS DOCUMENT CONTAINS CONFIDENTIAL AND PROPRIETARY INFORMATION AND ALL DESIGN, MANUFACTURING, REPRODUCTION, USE, PATENT RIGHTS AND SALES RIGHTS ARE EXPRESSLY RESERVED BY SAMTEC, INC. THIS DOCUMENT SHALL NOT BE DISCLOSED, IN WHOLE OR PART, TO ANY UNAUTHORIZED PERSON OR ENTITY NOR REPRODUCED, TRANSFERRED OR INCORPORATED IN ANY OTHER PROJECT IN ANY MANNER WITHOUT THE EXPRESS WRITTEN CONSENT OF SAMTEC, INC.</p>	<p>DESCRIPTION: CUSTOM COM HPC FEMALE ASSEMBLY</p>	
	<p>DWG. NO. ASP-230332-02</p>	
	<p>SHEET SCALE: 2:1</p>	<p>BY: JACK Z      5/11/2023      SHEET 3 OF 9</p>



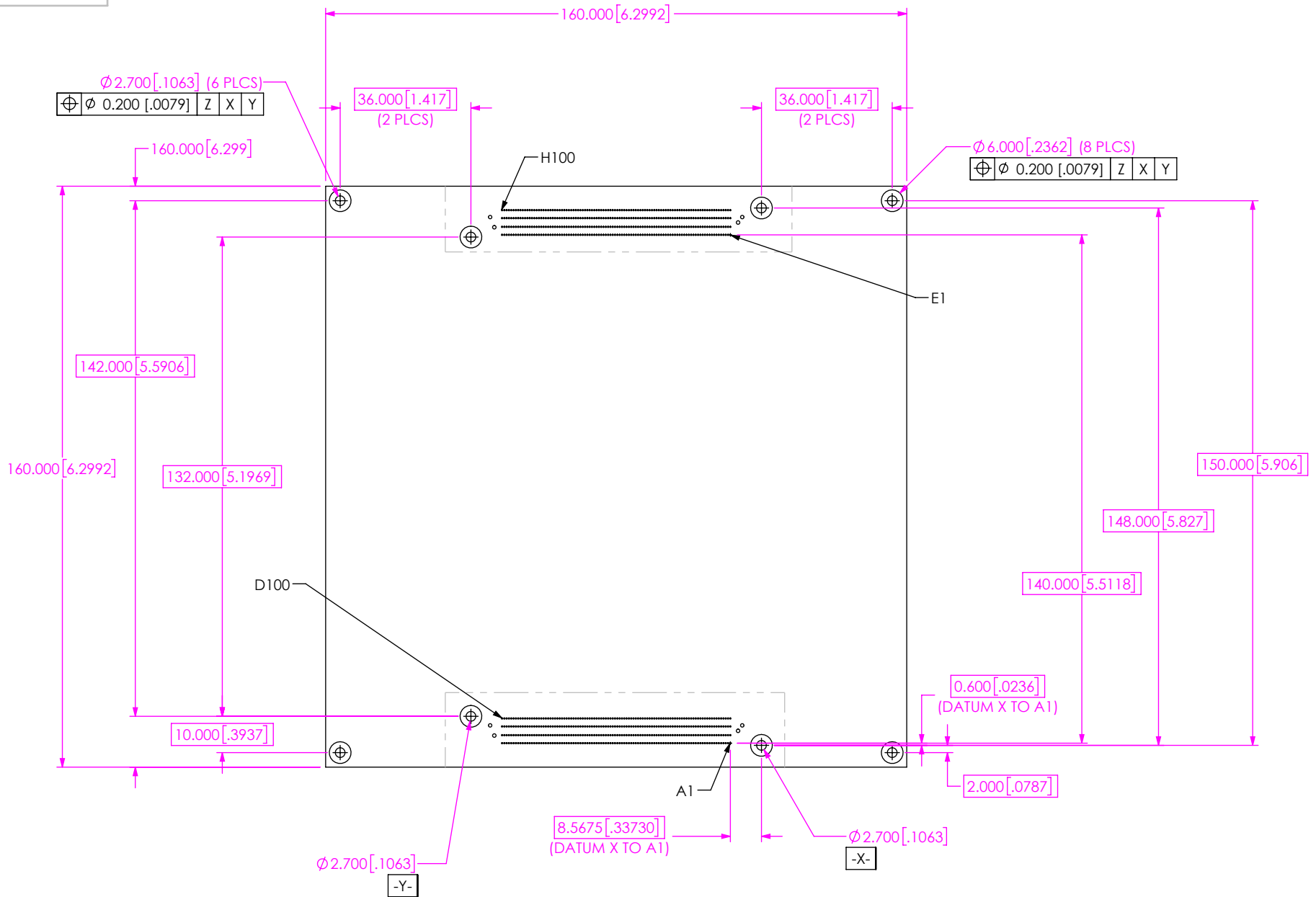
520 PARK EAST BLVD., NEW ALBANY, IN 47150  
PHONE: 812-944-6733    FAX: 812-948-5047  
e-Mail: info@SAMTEC.com    code 55322



<p>PROPRIETARY NOTE</p> <p>THIS DOCUMENT CONTAINS CONFIDENTIAL AND PROPRIETARY INFORMATION AND ALL DESIGN, MANUFACTURING, REPRODUCTION, USE, PATENT RIGHTS AND SALES RIGHTS ARE EXPRESSLY RESERVED BY SAMTEC, INC. THIS DOCUMENT SHALL NOT BE DISCLOSED, IN WHOLE OR PART, TO ANY UNAUTHORIZED PERSON OR ENTITY NOR REPRODUCED, TRANSFERRED OR INCORPORATED IN ANY OTHER PROJECT IN ANY MANNER WITHOUT THE EXPRESS WRITTEN CONSENT OF SAMTEC, INC.</p>	<p>520 PARK EAST BLVD., NEW ALBANY, IN 47150 PHONE: 812-944-6733 FAX: 812-948-5047 e-Mail: info@SAMTEC.com code 55322</p>
	<p>DESCRIPTION: CUSTOM COM HPC FEMALE ASSEMBLY</p>
	<p>DWG. NO. <b>ASP-230332-02</b></p>
<p>SHEET SCALE: 2:1</p>	<p>BY: JACK Z      5/11/2023      SHEET 4 OF 9</p>

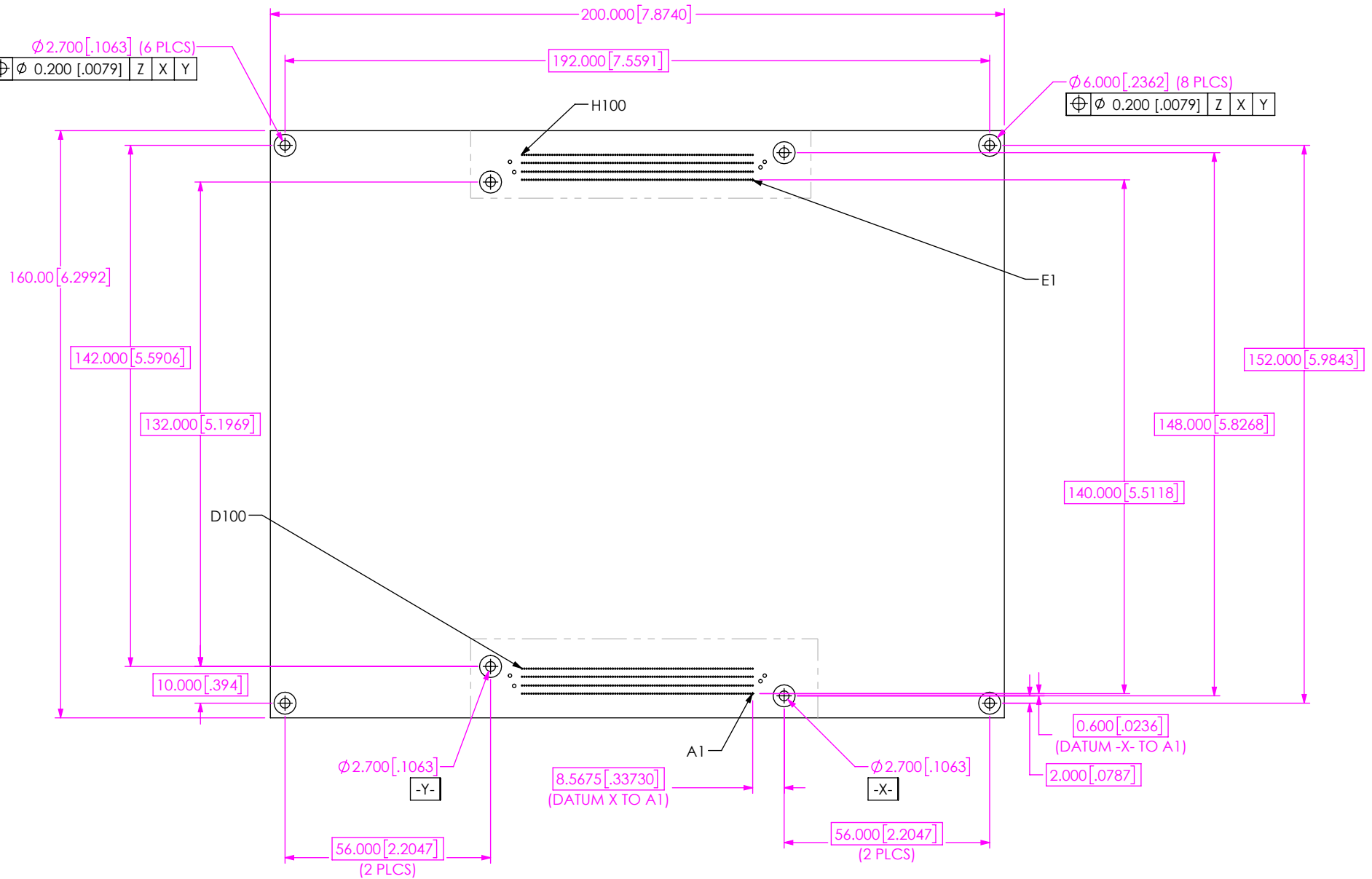






**FIG 5**  
 COM-HPC® MODULE SIZE D  
 (SAME AS FIG 2, EXCEPT AS SHOWN)  
 (RECOMMENDED PCB LAYOUT FOR COM-HPC®)

<p><b>PROPRIETARY NOTE</b></p> <p>THIS DOCUMENT CONTAINS CONFIDENTIAL AND PROPRIETARY INFORMATION AND ALL DESIGN, MANUFACTURING, REPRODUCTION, USE, PATENT RIGHTS AND SALES RIGHTS ARE EXPRESSLY RESERVED BY SAMTEC, INC. THIS DOCUMENT SHALL NOT BE DISCLOSED, IN WHOLE OR PART, TO ANY UNAUTHORIZED PERSON OR ENTITY NOR REPRODUCED, TRANSFERRED OR INCORPORATED IN ANY OTHER PROJECT IN ANY MANNER WITHOUT THE EXPRESS WRITTEN CONSENT OF SAMTEC, INC.</p>	<p><b>samtec</b></p> <p>520 PARK EAST BLVD, NEW ALBANY, IN 47150                  PHONE: 812-944-6733 FAX: 812-948-5047                  e-Mail info@SAMTEC.com code 55322</p>	
	<p>DESCRIPTION:                  CUSTOM COM HPC FEMALE ASSEMBLY</p>	
	<p>DWG. NO.                  ASP-230332-02</p>	
<p>SHEET SCALE: 2:1</p>	<p>BY: JACK Z</p>	<p>5/11/2023 SHEET 7 OF 9</p>



**FIG 6**  
 COM-HPC® MODULE SIZE E  
 (SAME AS FIG 2, EXCEPT AS SHOWN)  
 (RECOMMENDED PCB LAYOUT FOR COM-HPC®)

**PROPRIETARY NOTE**

THIS DOCUMENT CONTAINS CONFIDENTIAL AND PROPRIETARY INFORMATION AND ALL DESIGN, MANUFACTURING, REPRODUCTION, USE, PATENT RIGHTS AND SALES RIGHTS ARE EXPRESSLY RESERVED BY SAMTEC, INC. THIS DOCUMENT SHALL NOT BE DISCLOSED, IN WHOLE OR PART, TO ANY UNAUTHORIZED PERSON OR ENTITY NOR REPRODUCED, TRANSFERRED OR INCORPORATED IN ANY OTHER PROJECT IN ANY MANNER WITHOUT THE EXPRESS WRITTEN CONSENT OF SAMTEC, INC.



520 PARK EAST BLVD, NEW ALBANY, IN 47150  
 PHONE: 812-944-6733 FAX: 812-948-5047  
 e-Mail info@SAMTEC.com code 55322

SHEET SCALE: 2:1

DESCRIPTION:  
 CUSTOM COM HPC FEMALE ASSEMBLY

DWG. NO.  
**ASP-230332-02**

BY: JACK Z 5/11/2023 SHEET 8 OF 9



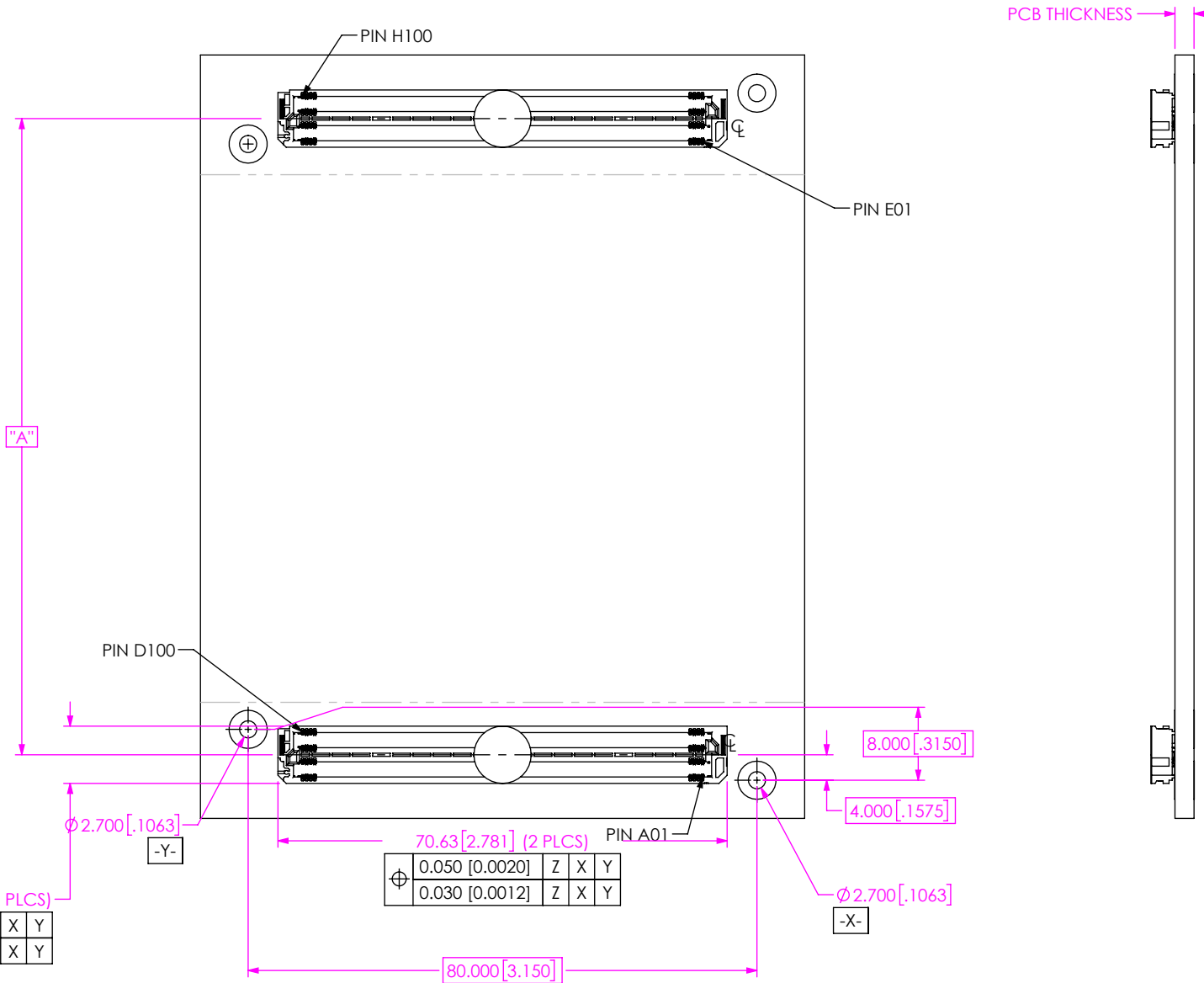


FIG 7  
COM-HPC® ASSEMBLY APPLICATION (SIZE A)  
(RECOMMENDED ASP-230332-02 LAYOUT FOR COM-HPC®)

⊕	0.050 [0.0020]	Z	X	Y
	0.030 [0.0012]	Z	X	Y

COM-HPC® MODULE	"A"
SIZE A	100.000 [3.937]
SIZE B	100.000 [3.937]
SIZE C	100.000 [3.937]
SIZE D	140.000 [5.512]
SIZE E	140.000 [5.512]

**PROPRIETARY NOTE**

THIS DOCUMENT CONTAINS CONFIDENTIAL AND PROPRIETARY INFORMATION AND ALL DESIGN, MANUFACTURING, REPRODUCTION, USE, PATENT RIGHTS AND SALES RIGHTS ARE EXPRESSLY RESERVED BY SAMTEC, INC. THIS DOCUMENT SHALL NOT BE DISCLOSED, IN WHOLE OR PART, TO ANY UNAUTHORIZED PERSON OR ENTITY NOR REPRODUCED, TRANSFERRED OR INCORPORATED IN ANY OTHER PROJECT IN ANY MANNER WITHOUT THE EXPRESS WRITTEN CONSENT OF SAMTEC, INC.

SHEET SCALE: 2:1

**samtec**

520 PARK EAST BLVD., NEW ALBANY, IN 47150  
PHONE: 812-944-6733 FAX: 812-948-5047  
e-Mail info@SAMTEC.com code 55322

DESCRIPTION:  
CUSTOM COM HPC FEMALE ASSEMBLY

DWG. NO.  
**ASP-230332-02**

BY: JACK Z 5/11/2023 SHEET 9 OF 9