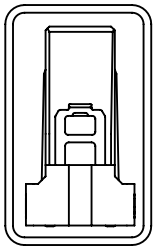
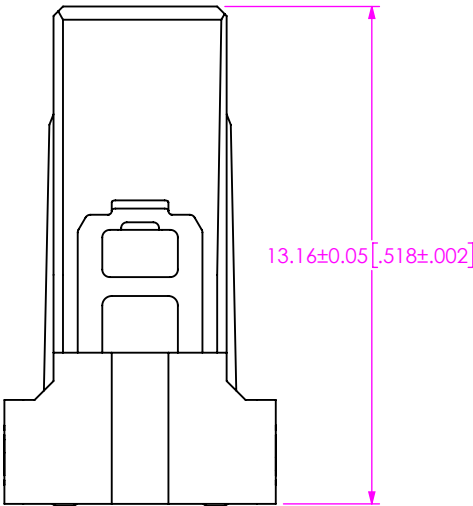
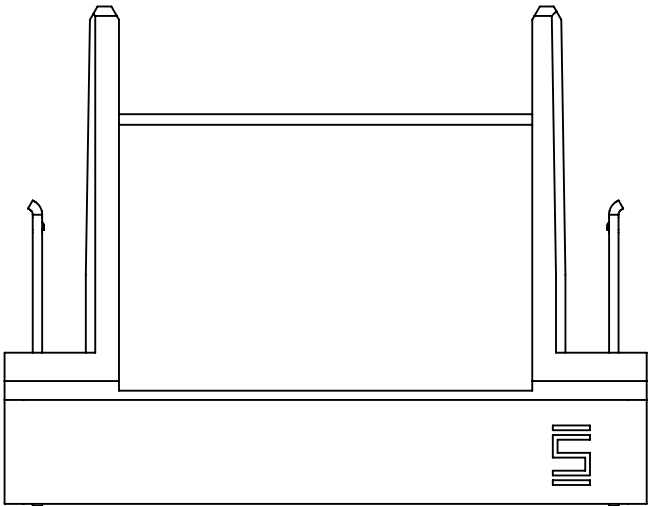
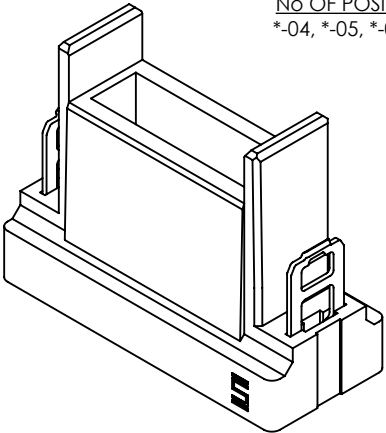
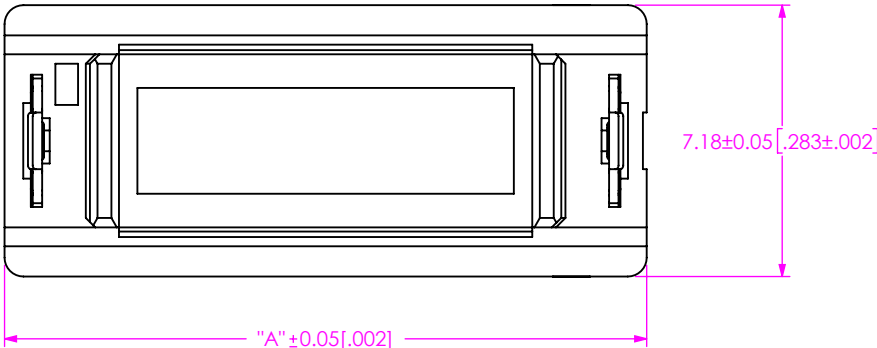


DO NOT  
SCALE FROM  
THIS PRINT

B1SDR-XX

No OF POSITIONS (PER ROW)  
\*-04, \*-05, \*-07, -10, -15, \*-20, -25, -30, \*-40

\* NOT TOOLED



PACKAGING VIEW  
PLUG NOT SHOWN

FIG 1  
B1SDR-10-CUS SHOWN


- NOTES:
- 1. NOTE DELETED.
  - 2. PARTS TO BE PACKAGED IN TUBE.
  - 3. ORDERS WILL BE PACKAGED ACCORDING TO THE SAMTEC PACKAGING EFFICIENCY STANDARDS (SPES) FOUND ON WWW.SAMTEC.COM.

TABLE 1		
STYLE	"A"	
-04	10.99	[0.433]
-05	11.99	[0.472]
-07	13.99	[0.551]
-10	16.99	[0.669]
-15	21.99	[0.866]
-20	26.99	[1.063]
-25	31.99	[1.259]
-30	36.99	[1.456]
-40	46.99	[1.850]

PROPRIETARY NOTE  
THIS DOCUMENT CONTAINS CONFIDENTIAL AND PROPRIETARY INFORMATION AND ALL DESIGN, MANUFACTURING, REPRODUCTION, USE, PATENT RIGHTS AND SALES RIGHTS ARE EXPRESSLY RESERVED BY SAMTEC, INC. THIS DOCUMENT SHALL NOT BE DISCLOSED, IN WHOLE OR PART, TO ANY UNAUTHORIZED PERSON OR ENTITY NOR REPRODUCED, TRANSFERRED OR INCORPORATED IN ANY OTHER PROJECT IN ANY MANNER WITHOUT THE EXPRESS WRITTEN CONSENT OF SAMTEC, INC.

DO NOT SCALE DRAWING  
SHEET SCALE: 5:1

MATERIAL:  
INSULATOR: LCP  
LATCH: STAINLESS STEEL



520 PARK EAST BLVD, NEW ALBANY, IN 47150  
PHONE: 812-944-6733 FAX: 812-948-5047  
e-Mail info@SAMTEC.com code 55322

DESCRIPTION:  
B1SDX CABLE RETAINER SUBASSEMBLY

DWG. NO.  
B1SDR-XX

BY: G DETHY 04/28/2021 SHEET 1 OF 1