

THIS PRODUCT MANUFACTURED WITH LEAD-FREE PROCESSING

DESIGNED & DIMENSIONED IN MILLIMETERS [INCHES]

BNC7T-P-C-XX-RA-CA6X

DO NOT SCALE FROM THIS PRINT

GENDER
-P: PLUG

TYPE
-C: CABLE

TERMINATION
-CA6: CCA-6
CCA-1694A
-CA6B: CCA-4694R

ORIENTATION
-RA: RIGHT ANGLE

PLATING
-GN: GOLD / NICKEL
10µ" Au / 50µ" Ni MIN ON PIN
100µ" Ni MIN ON OUTER CONTACT

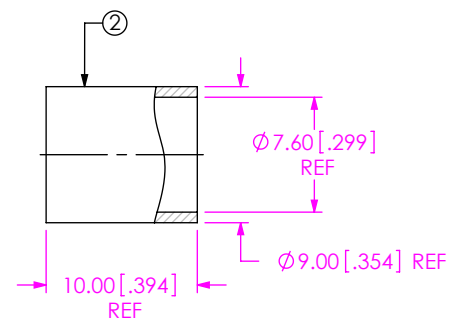
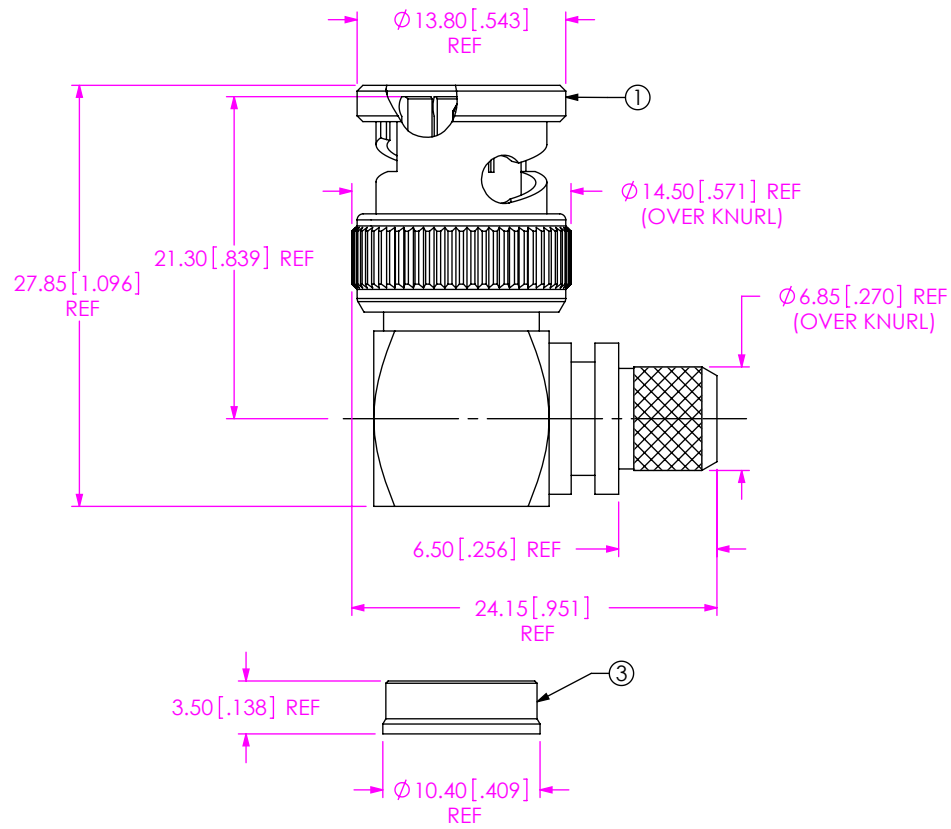


TABLE 1

ITEM	COMPONENT	-CA6	-CA6B
1	SUB ASSEMBLY	SUB-BNC7T-P-C-GN-RA-CA6	SUB-BNC7T-P-C-GN-RA-CA6B
2	FERRULE	BNC-FER-001-N	
3	CAP	BNC7T-P-C-N-RA-CA6-CAP	

NOTES:

1. REPRESENTS A CRITICAL DIMENSION.
2. PUSHOUT FORCE FOR CENTER CONTACT: 26.69N [6LBS] MIN.
3. SEE SHEET 2 FOR TERMINATION INFORMATION.
4. NOTE DELETED.
5. NOTE DELETED.
6. RoHS COMPLIANT.
7. NOTE DELETED
8. NOTE DELETED

UNLESS OTHERWISE SPECIFIED DIMENSIONS ARE IN MILLIMETERS [INCHES]

TOLERANCES ARE:

DECIMALS ANGLES

.X: ±0.3 [01] 5°

.XX: ±0.13 [005]

.XXX: ±0.051 [0020]

PROPRIETARY NOTE

THIS DOCUMENT CONTAINS CONFIDENTIAL AND PROPRIETARY INFORMATION AND ALL DESIGN, MANUFACTURING, REPRODUCTION, USE, PATENT RIGHTS AND SALES RIGHTS ARE EXPRESSLY RESERVED BY SAMTEC, INC. THIS DOCUMENT SHALL NOT BE DISCLOSED, IN WHOLE OR PART, TO ANY UNAUTHORIZED PERSON OR ENTITY NOR REPRODUCED, TRANSFERRED OR INCORPORATED IN ANY OTHER PROJECT IN ANY MANNER WITHOUT THE EXPRESS WRITTEN CONSENT OF SAMTEC, INC.

MATERIAL: DO NOT SCALE DRAWING SHEET SCALE: 2:1

SHELL, FERRULE, NUT, CAP: BRASS
CONTACT: BRASS
DIELECTRIC: PTFE
GASKET: SILICONE

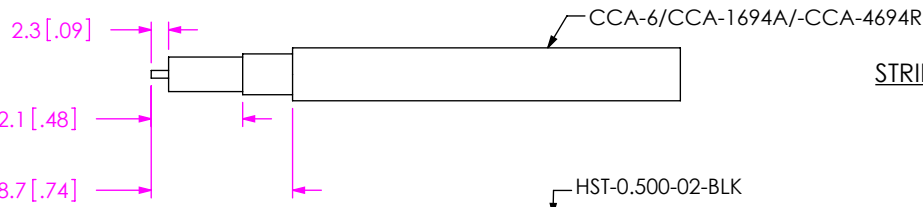


520 PARK EAST BLVD., NEW ALBANY, IN 47150
PHONE: 812-944-6733 FAX: 812-948-5047
e-Mail info@SAMTEC.com code 55322

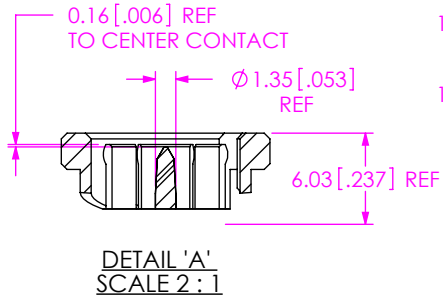
DESCRIPTION:
TRUE 75 OHM, BNC RA RG6 CABLE PLUG

DWG. NO.
BNC7T-P-C-XX-RA-CA6X

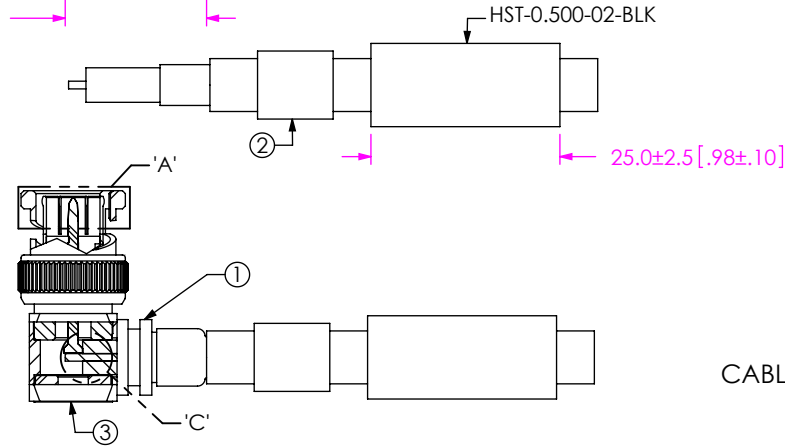
BY: G. HERMAN 01/09/2009 SHEET 1 OF 2



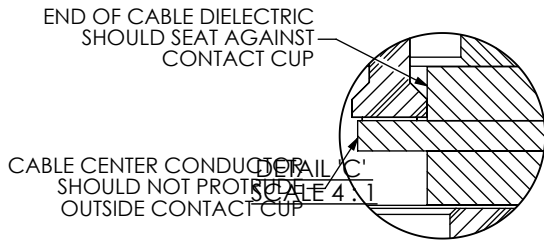
STRIP AND TIN INNER CONDUCTOR



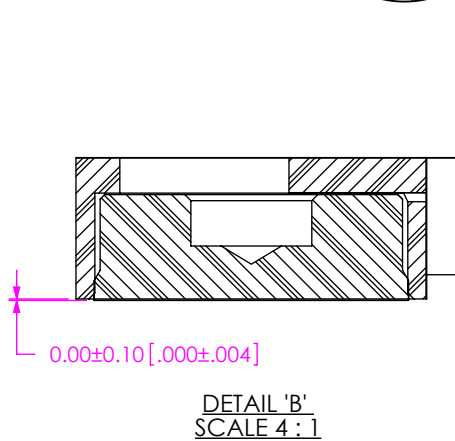
ADD HEAT SHRINK TUBE AND FERRULE



FLAIR BRAID AND ADD SUB-BNC7T-P-C-XX-RA-CA6X CABLE FOIL WRAP TO BE INSERTED INSIDE CABLE BODY



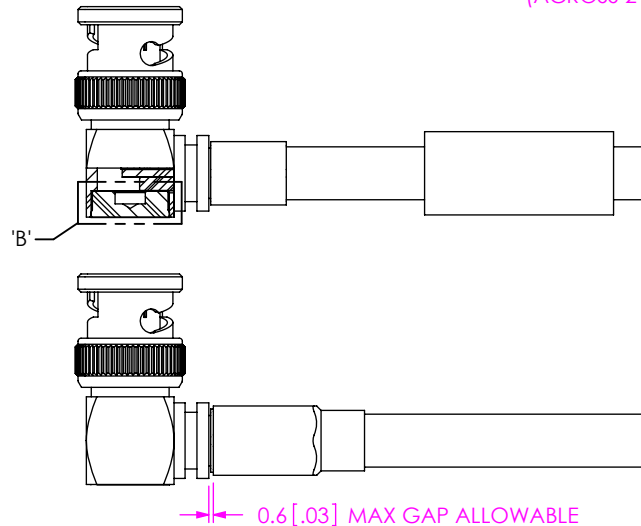
CRIMP FERRULE AND SOLDER SIGNAL PIN (USE RF CRIMP HAND TOOL # CAT-HT-126667-21 OR EQUIVALENT) (USE .325 HEX DIE FOR CCA-4694R CABLE.)



0.25 [.010] MAX GAP ALLOWABLE

-CA6: 8.38 [.330] / -CA6B: 8.26 [.325] (HEX CRIMP) (ACROSS 2 FACES)

INSERT CAP



APPLY HEAT SHRINK TUBING

F:\DWG\MISC\MKTG\BNC7T-P-C-XX-RA-CA6X-MKT.SLDDRW

PROPRIETARY NOTE

THIS DOCUMENT CONTAINS CONFIDENTIAL AND PROPRIETARY INFORMATION AND ALL DESIGN, MANUFACTURING, REPRODUCTION, USE, PATENT RIGHTS AND SALES RIGHTS ARE EXPRESSLY RESERVED BY SAMTEC, INC. THIS DOCUMENT SHALL NOT BE DISCLOSED, IN WHOLE OR PART, TO ANY UNAUTHORIZED PERSON OR ENTITY NOR REPRODUCED, TRANSFERRED OR INCORPORATED IN ANY OTHER PROJECT IN ANY MANNER WITHOUT THE EXPRESS WRITTEN CONSENT OF SAMTEC, INC.



520 PARK EAST BLVD. NEW ALBANY, IN 47150
 PHONE: 812-944-6733 FAX: 812-948-5047
 e-Mail info@SAMTEC.com code 55322

DO NOT SCALE DRAWING

SHEET SCALE: 1:1

DESCRIPTION:
 TRUE 75 OHM, BNC RA RG6 CABLE PLUG

DWG. NO.
BNC7T-P-C-XX-RA-CA6X

BY: G. HERMAN 01/09/2009 SHEET 2 OF 2