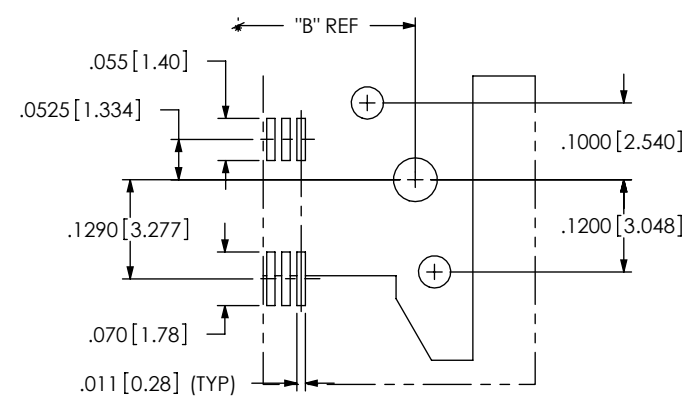
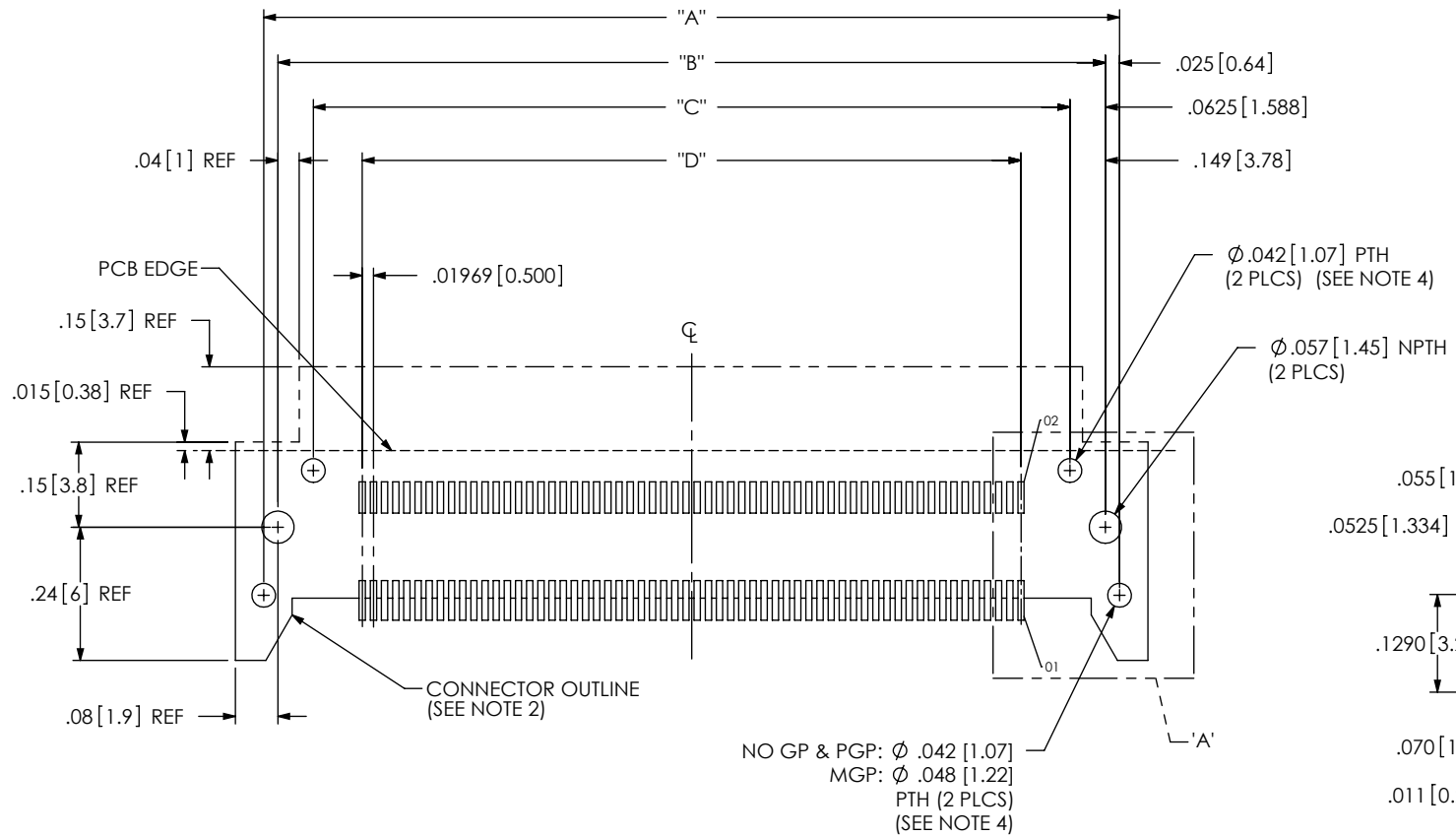


DESIGNED & DIMENSIONED  
IN INCHES [MILLIMETERS] A

3/16/2012 ECN-174110



DETAIL 'A'

TABLE 1

No OF POS	"A"		"B"		"C"	"D"
	NO GP & *-PGP	*-MGP	NO GP & *-PGP	*-MGP		
-030	.919 [23.33]	1.019 [25.87]	.869 [22.06]	1.019 [25.87]	.744 [18.89]	.5710 [14.504]
-060	1.509 [38.34]	1.609 [40.88]	1.459 [37.07]	1.609 [40.88]	1.334 [33.89]	1.1617 [29.507]
-090	2.100 [53.34]	2.200 [55.88]	2.050 [52.07]	2.200 [55.88]	1.925 [48.90]	1.7524 [44.511]

(\* = NOT TOOLED)

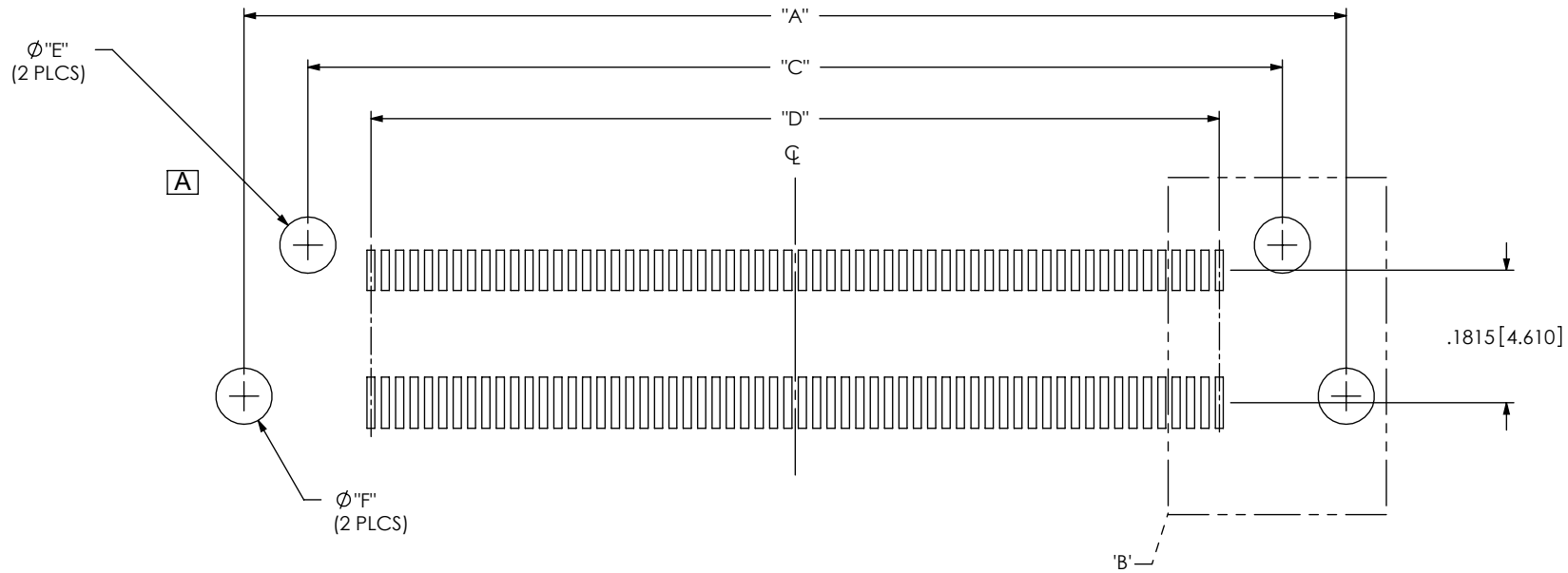
- NOTES:
1. ALL DIMENSIONS ARE SYMMETRIC ABOUT THE CENTERLINE.
  2. CONNECTOR OUTLINE. OTHER COMPONENTS PLACED ON PCB, SHALL AVOID THIS AREA.
  3. NOT RECOMMENDED FOR INVERTED REFLOW SOLDER.
  4. TO BE SOLDERED USING PASTE IN HOLE TECHNOLOGY.

A

**PROPRIETARY NOTE**  
 THIS DOCUMENT CONTAINS INFORMATION CONFIDENTIAL AND PROPRIETARY TO SAMTEC, INC. AND SHALL NOT BE REPRODUCED OR TRANSFERRED TO OTHER DOCUMENTS OR DISCLOSED TO OTHERS OR USED FOR ANY PURPOSE OTHER THAN THAT WHICH IT WAS OBTAINED WITHOUT THE EXPRESSED WRITTEN CONSENT OF SAMTEC, INC.



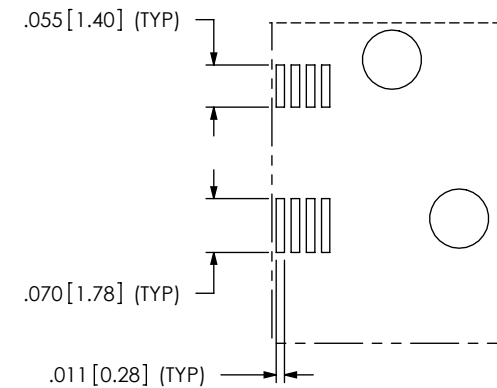
520 PARK EAST BLVD, NEW ALBANY, IN 47150  
 PHONE: 812-944-6733 FAX: 812-948-5047  
 fromparent+e-Mail: info@SAMTEC.com code: 55322



A

TABLE 2

PCB THICKNESS	"E"		"F"	
	NO GP & *-PGP	*-MGP	NO GP & *-PGP	*-MGP
.062	.077 [1.96]	.077 [1.96]	.077 [1.96]	.097 [2.46]
.093	.109 [2.77]	.109 [2.77]	.109 [2.77]	.120 [3.05]



DETAIL 'B'

NOTE:

1. STENCIL TO BE .0050[.127] THICK.
2. ALL DIMENSIONS ARE SYMMETRIC ABOUT THE CENTERLINE.

A

PROPRIETARY NOTE

THIS DOCUMENT CONTAINS INFORMATION CONFIDENTIAL AND PROPRIETARY TO SAMTEC, INC. AND SHALL NOT BE REPRODUCED OR TRANSFERRED TO OTHER DOCUMENTS OR DISCLOSED TO OTHERS OR USED FOR ANY PURPOSE OTHER THAN THAT WHICH IT WAS OBTAINED WITHOUT THE EXPRESSED WRITTEN CONSENT OF SAMTEC, INC.



520 PARK EAST BLVD, NEW ALBANY, IN 47150  
 PHONE: 812-944-6733 FAX: 812-948-5047  
 fromparent+e-Mail: info@SAMTEC.com

code: 55322