

DO NOT SCALE FROM THIS PRINT

NOTES:

1. Ⓢ REPRESENTS A CRITICAL DIMENSION.
2. HANDLE TO BE 1" X 3/4", 4 FLUTE.
3. PRESS ITEM 1 (SOLDERED WITH ITEM 2) INTO HANDLE TO DIMENSION SHOWN.
4. SHARP CORNERS CAN BE BROKEN WITH A 0.05 RADIUS OR 0.05 x 45° CHAMFER MAX, UNLESS OTHERWISE SPECIFIED.
5. FABRICATED PARTS MUST BE FREE OF SCRATCHES, TOOL MARKS, BURRS, ETC AND NEED TO BE 100% INSPECTED.

DESIGNED & DIMENSIONED IN MILLIMETERS

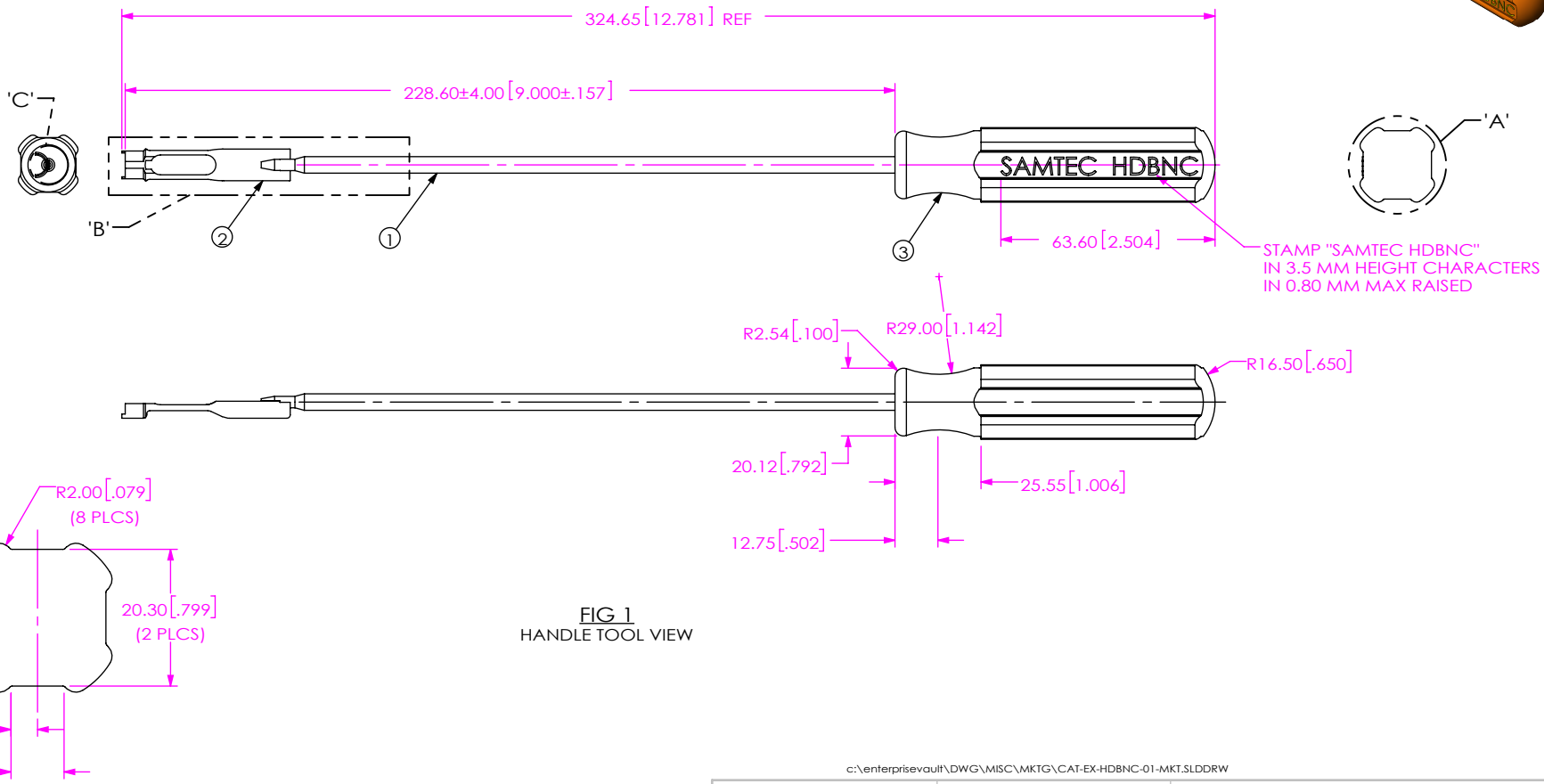
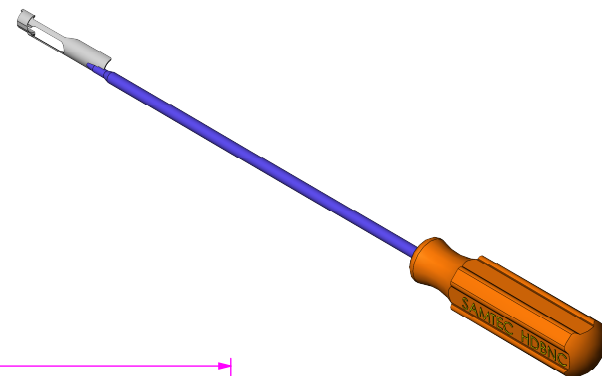


FIG 1 HANDLE TOOL VIEW

DETAIL 'A'
SCALE 1:1

Samtec Bill of Material

ITEM NO.	Part No.	Quantity	Finish	Material
1	CAT-EX-HDBNC-01-ROD	1	PASSIVATED	STAINLESS STEEL, 303
2	CAT-EX-HDBNC-01-TIP	1	PASSIVATED	SUS 420
3	CAT-EX-HDBNC-01-HANDLE	1	ORANGE	POM

c:\enterprisevault\DWG\MISC\MKTG\CAT-EX-HDBNC-01-MKT.SLDDRW

UNLESS OTHERWISE SPECIFIED, DIMENSIONS ARE IN MILLIMETERS.

TOLERANCES ARE:
DECIMALS ANGLES
X.X: ±0.3 [01] 5°
X.XX: ±0.13 [005]
X.XXX: ±0.051 [0020]

PROPRIETARY NOTE

THIS DOCUMENT CONTAINS CONFIDENTIAL AND PROPRIETARY INFORMATION AND ALL DESIGN, MANUFACTURING, REPRODUCTION, USE, PATENT RIGHTS AND SALES RIGHTS ARE EXPRESSLY RESERVED BY SAMTEC, INC. THIS DOCUMENT SHALL NOT BE DISCLOSED, IN WHOLE OR PART, TO ANY UNAUTHORIZED PERSON OR ENTITY NOR REPRODUCED, TRANSFERRED OR INCORPORATED IN ANY OTHER PROJECT IN ANY MANNER WITHOUT THE EXPRESS WRITTEN CONSENT OF SAMTEC, INC.

MATERIAL: DO NOT SCALE DRAWING SHEET SCALE: 1:2



520 PARK EAST BLVD, NEW ALBANY, IN 47150
PHONE: 812-944-6733 FAX: 812-948-5047
e-Mail: info@SAMTEC.com code 55322

DESCRIPTION:
HDBNC TOOL FOR INSTALLATION / REMOVAL

DWG. NO. CAT-EX-HDBNC-01

BY: JERRY SU 06/01/2012 SHEET 1 OF 2

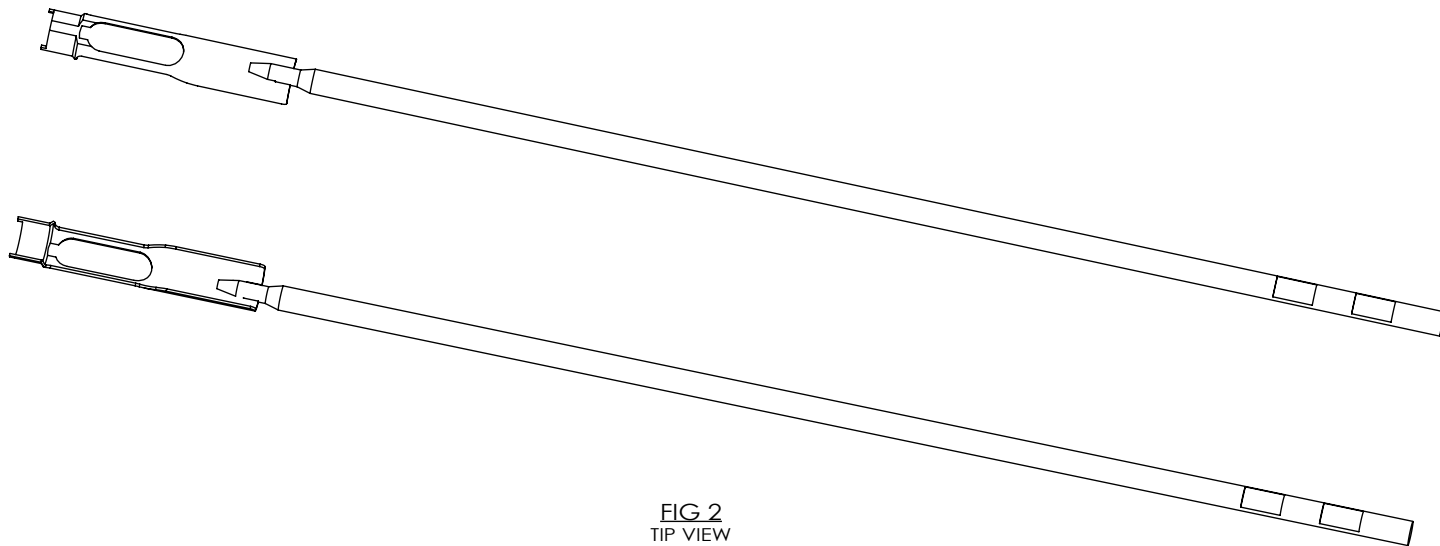
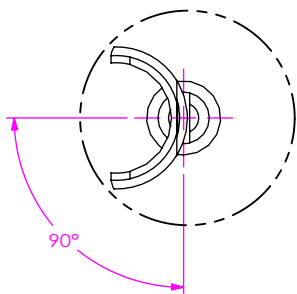
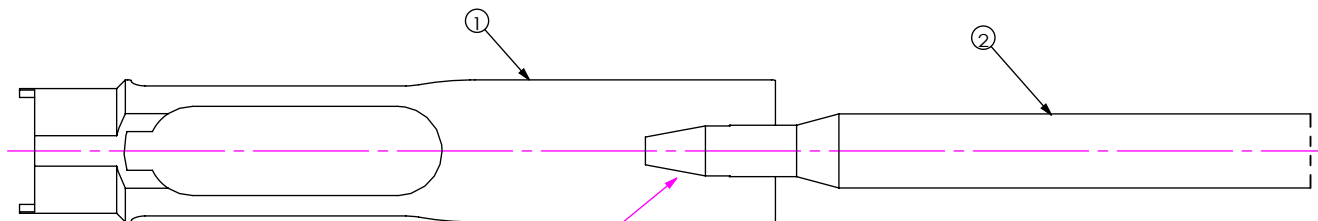


FIG 2
TIP VIEW



DETAIL 'C'
SCALE 2 : 1



USING HIGH TEMP SILVER SOLDER
AND MUST BE APPLIED TO BOTH SIDES
WIRE ITEMS 1 AND 2 COME IN CONTACT
(SEE NOTE 1, 2, 3 & 4)

DETAIL 'B'
SCALE 2 : 1

NOTES:

1. SLIDE TOOL ITEM 1 INTO GROOVE OF SHAFT, ITEM 2 UNTIL BOTTOMED.
2. SILVER SOLDER AS SHOWN, SOLDER JOINT MUST BE SMOOTH AND NOT HAVE A EXCESSIVE AMOUNT OF SOLDER.
3. SOLDER JOINT MUST WITHSTAND A 75 LB. MIN. AXIAL PULL.
4. TOOL ITEM 1 AND SHAFT ITEM 2 MUST BE WITHIN 2° AS SHOWN AFTER BRAZING.

PROPRIETARY NOTE

THIS DOCUMENT CONTAINS CONFIDENTIAL AND PROPRIETARY INFORMATION AND ALL DESIGN, MANUFACTURING, REPRODUCTION, USE, PATENT RIGHTS AND SALES RIGHTS ARE EXPRESSLY RESERVED BY SAMTEC, INC. THIS DOCUMENT SHALL NOT BE DISCLOSED, IN WHOLE OR PART, TO ANY UNAUTHORIZED PERSON OR ENTITY NOR REPRODUCED, TRANSFERRED OR INCORPORATED IN ANY OTHER PROJECT IN ANY MANNER WITHOUT THE EXPRESS WRITTEN CONSENT OF SAMTEC, INC.

SHEET SCALE: 1:2



520 PARK EAST BLVD, NEW ALBANY, IN 47150
PHONE: 812-944-6733 FAX: 812-948-5047
e-Mail: info@SAMTEC.com code 55322

DESCRIPTION:
HDBNC TOOL FOR INSTALLATION / REMOVAL

DWG. NO. CAT-EX-HDBNC-01

BY: JERRY SU 06/01/2012 SHEET 2 OF 2