

DESIGNED & DIMENSIONED
IN MILLIMETERS [INCHES]

DO NOT
SCALE FROM
THIS PRINT

DCA-ACP-22-M-X

SIZE
METAL

KEYING FEATURE COLOR
(SEE TABLE 1)
-1: ORANGE
-2: GREEN
-3: BLUE
-4: YELLOW

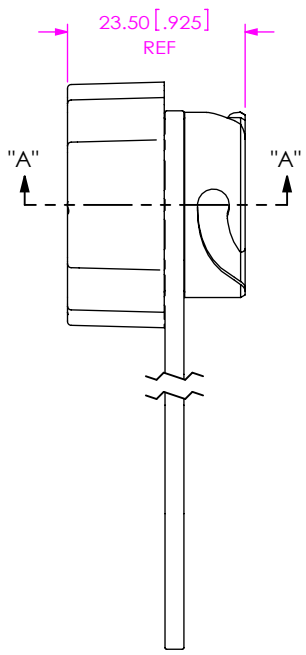
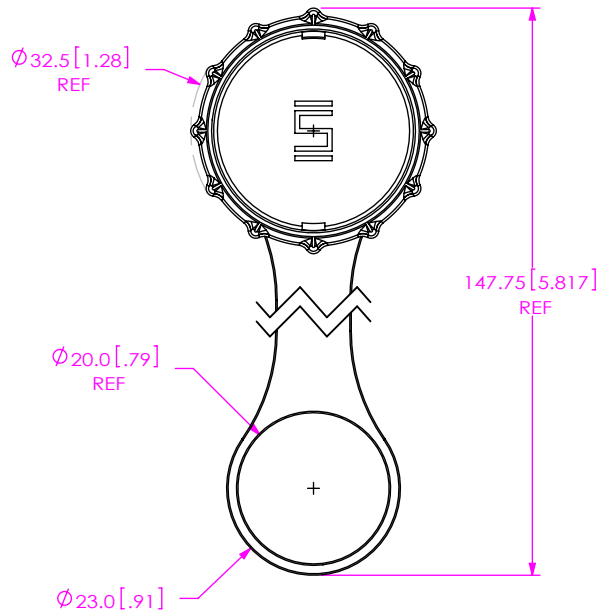
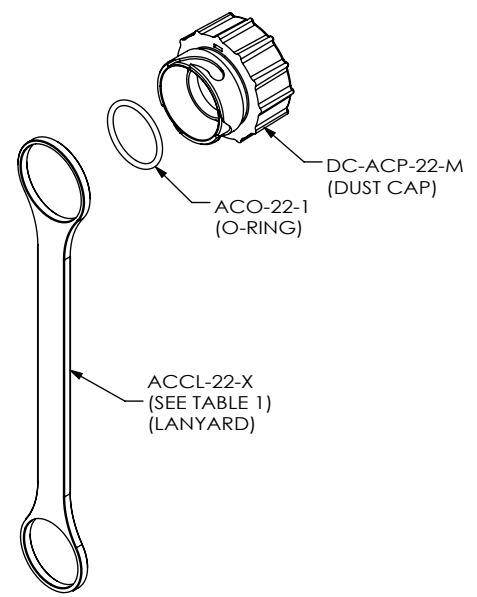


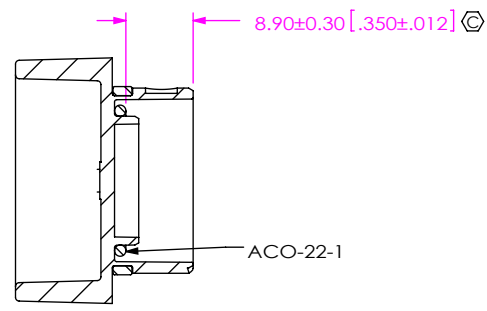
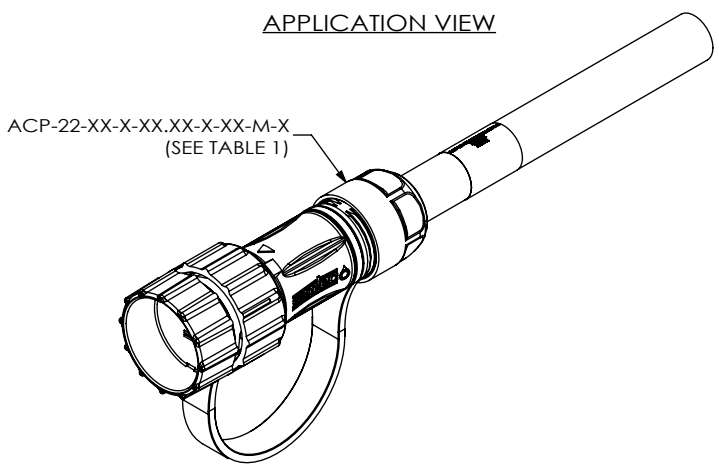
TABLE 1

CORRESPONDING CABLE PART NUMBER	KEYING FEATURE COLOR	ACCL-22-X
ACP-22-XX-X-XX.XX-X-X-M-1	-1	ACCL-22-1
ACP-22-XX-X-XX.XX-X-X-M-2	-2	ACCL-22-2
ACP-22-XX-X-XX.XX-X-X-M-3	-3	ACCL-22-3
ACP-22-XX-X-XX.XX-X-X-M-4	-4	ACCL-22-4

IN-PROCESS
STRETCH ACCL-22-X OVER DC-ACP-22-M UNTIL IT SEATS IN GROOVE. INSERT ACO-22-1 INTO DC-ACP-22-M.



APPLICATION VIEW



SECTION "A"- "A"

UNLESS OTHERWISE SPECIFIED, DIMENSIONS ARE IN MILLIMETERS. TOLERANCES ARE:

DECIMALS	ANGLES
X.X: ±0.3 [.01]	2°
X.XX: ±0.13 [.005]	
X.XXX: ±0.051 [.0020]	

PROPRIETARY NOTE
THIS DOCUMENT CONTAINS INFORMATION CONFIDENTIAL AND PROPRIETARY TO SAMTEC, INC. AND SHALL NOT BE REPRODUCED OR TRANSFERRED TO OTHER DOCUMENTS OR DISCLOSED TO OTHERS OR USED FOR ANY PURPOSE OTHER THAN THAT WHICH IT WAS OBTAINED WITHOUT THE EXPRESSED WRITTEN CONSENT OF SAMTEC, INC.

MATERIAL: DO NOT SCALE DRAWING SHEET SCALE: 1:1

DC-ACP-22-M: ZAMAK 3, NICKEL PLATED
ACCL-22-X: SILICONE
ACO-16-1: NITRILE

DESCRIPTION:
M22 CABLE DUST CAP METAL

DWG. NO. **DCA-ACP-22-M-X**

BY: VICKY Z 10/12/2010 SHEET 1 OF 1

520 PARK EAST BLVD. NEW ALBANY, IN 47150
PHONE: 812-944-6733 FAX: 812-948-5047
e-Mail: info@SAMTEC.com code 55322

c:\enterprise\vauf\DWG\MISC\MKTG\DCA-ACP-22-M-X-MKT.SLDDRW

NOTES:

- ⊗ REPRESENTS A CRITICAL DIMENSION.
- ACCL-22-X MUST SEAT IN GROOVE IN DC-ACP-22-M.
- PARTS TO BE BULK PACKAGED.