

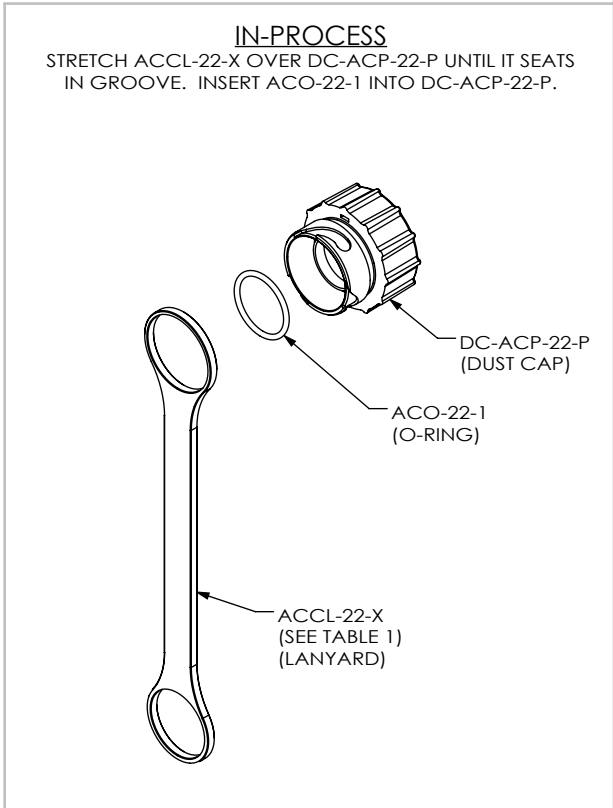
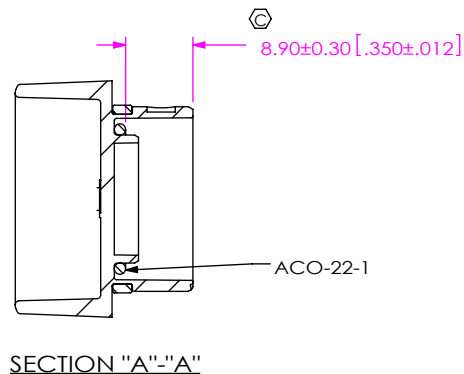
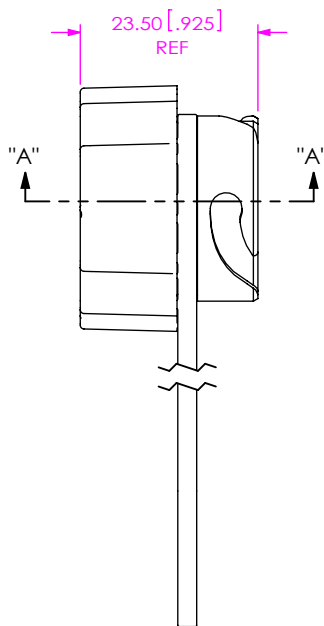
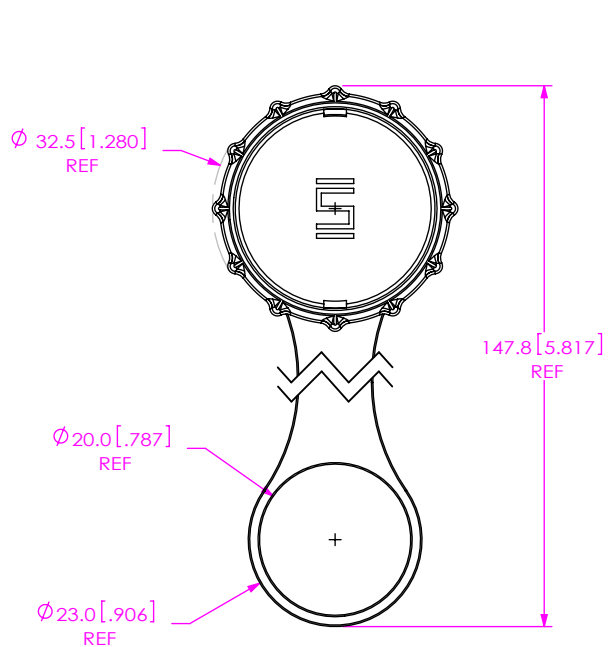
DESIGNED & DIMENSIONED  
IN MILLIMETERS [INCHES]

DCA-ACP-22-P-X

SIZE  
PLASTIC

KEYING FEATURE COLOR  
-1: ORANGE  
-2: GREEN  
-3: BLUE  
-4: YELLOW

DO NOT  
SCALE FROM  
THIS PRINT



CORRESPONDING CABLE PART NUMBER		KEYING FEATURE COLOR	ACCL-22-X
ACP-22-XX-X-XX.XX-X-X-O-1	ACP-22-XX-X-XX.XX-X-X-P-1	-1	ACCL-22-1
ACP-22-XX-X-XX.XX-X-X-O-2	ACP-22-XX-X-XX.XX-X-X-P-2	-2	ACCL-22-2
ACP-22-XX-X-XX.XX-X-X-O-3	ACP-22-XX-X-XX.XX-X-X-P-3	-3	ACCL-22-3
ACP-22-XX-X-XX.XX-X-X-O-4	ACP-22-XX-X-XX.XX-X-X-P-4	-4	ACCL-22-4

NOTES:

- ⊕ REPRESENTS A CRITICAL DIMENSION.
- ACCL-22-X MUST SEAT IN GROOVE IN DC-ACP-22-P.
- PARTS TO BE BULK PACKAGED.

UNLESS OTHERWISE SPECIFIED, DIMENSIONS ARE IN MILLIMETERS. TOLERANCES ARE:

DECIMALS	ANGLES
X.X: ±0.3 [01]	2°
X.XX: ±0.13 [005]	
X.XXX: ±0.051 [0020]	

**PROPRIETARY NOTE**  
THIS DOCUMENT CONTAINS INFORMATION CONFIDENTIAL AND PROPRIETARY TO SAMTEC, INC. AND SHALL NOT BE REPRODUCED OR TRANSFERRED TO OTHER DOCUMENTS OR DISCLOSED TO OTHERS OR USED FOR ANY PURPOSE OTHER THAN THAT WHICH IT WAS OBTAINED WITHOUT THE EXPRESSED WRITTEN CONSENT OF SAMTEC, INC.

**MATERIAL:** DC-ACP-22-P: NYLON COLOR: BLACK  
ACCL-22-X: SILICONE  
ACO-22-1: NITRILE

DO NOT SCALE DRAWING SHEET SCALE: 1:1



520 PARK EAST BLVD. NEW ALBANY, IN 47150  
PHONE: 812-944-6733 FAX: 812-948-5047  
e-Mail: info@SAMTEC.com code 55322

DESCRIPTION: M22 CABLE DUST CAP

DWG. NO. DCA-ACP-22-P-X

BY: VICKY Z 10/11/2010 SHEET 1 OF 1