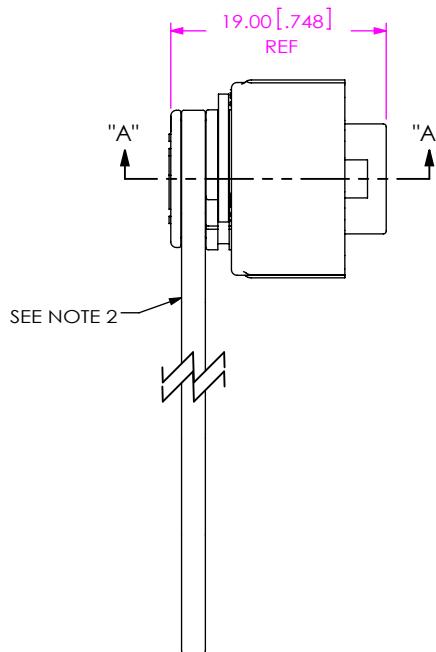
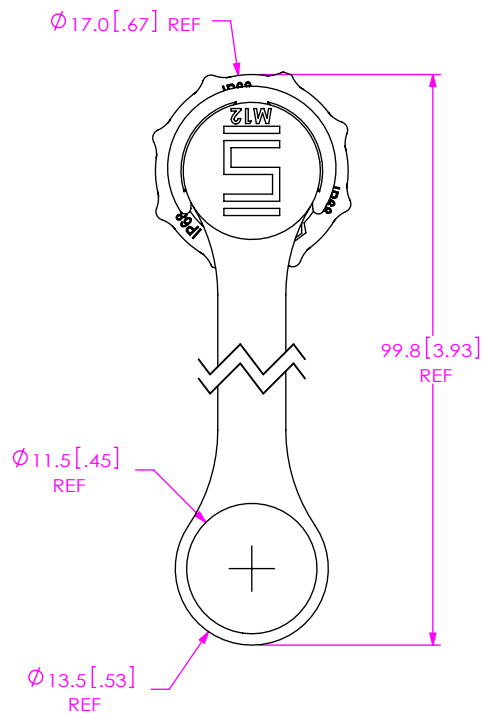


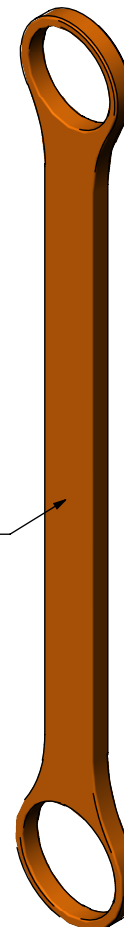
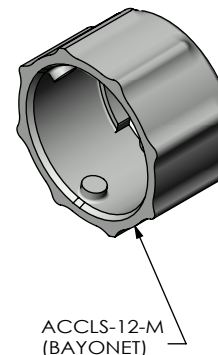
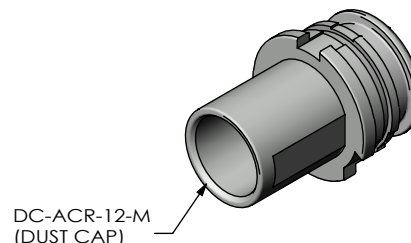
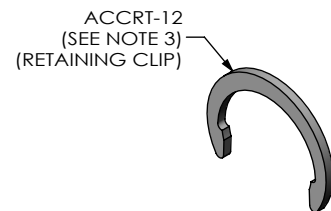
DO NOT SCALE FROM THIS PRINT

DESIGNED & DIMENSIONED IN MILLIMETERS [INCHES]

DCA-ACR-12-M-X

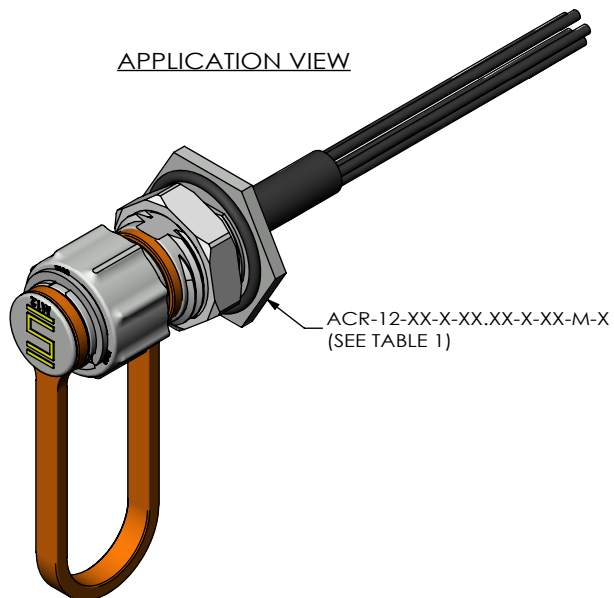


SEE NOTE 2

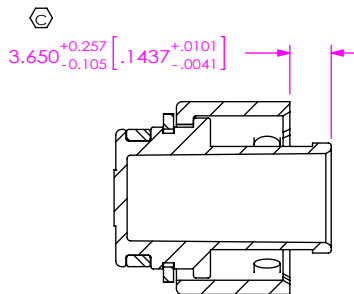


RECEPTACLE
SIZE
METAL
KEYING FEATURE COLOR (SEE TABLE 1)
-1: ORANGE
-2: GREEN
-3: BLUE
-4: YELLOW

APPLICATION VIEW



ACR-12-XX-X-XX.XX-X-XX-M-X (SEE TABLE 1)



SECTION "A"-"A"

TABLE 1		
CORRESPONDING CABLE PART NUMBER	KEYING COLOR FEATURE	ACCL-12-X
ACR-12-XX-X-XX.XX-X-XX-M-1	-1	ACCL-12-1
ACR-12-XX-X-XX.XX-X-XX-M-2	-2	ACCL-12-2
ACR-12-XX-X-XX.XX-X-XX-M-3	-3	ACCL-12-3
ACR-12-XX-X-XX.XX-X-XX-M-4	-4	ACCL-12-4

NOTES:

- ⊕ REPRESENTS A CRITICAL DIMENSION.
- ACCL-12-X MUST SEAT IN GROOVE IN DC-ACR-12-M.
- SNAP ACCRT-12 INTO GROOVE ON DC-ACR-12-M.
- PART TO BE BULK PACKAGED.

UNLESS OTHERWISE SPECIFIED, DIMENSIONS ARE IN MILLIMETERS. TOLERANCES ARE:
DECIMALS ANGLES
X.X: ±0.3 [01] 2°
X.XX: ±0.13 [005]
X.XXX: ±0.051 [0020]

PROPRIETARY NOTE

THIS DOCUMENT CONTAINS INFORMATION CONFIDENTIAL AND PROPRIETARY TO SAMTEC, INC. AND SHALL NOT BE REPRODUCED OR TRANSFERRED TO OTHER DOCUMENTS OR DISCLOSED TO OTHERS OR USED FOR ANY PURPOSE OTHER THAN THAT WHICH IT WAS OBTAINED WITHOUT THE EXPRESSED WRITTEN CONSENT OF SAMTEC, INC.



520 PARK EAST BLVD. NEW ALBANY, IN 47150
PHONE: 812-944-6733 FAX: 812-948-5047
e-Mail: info@SAMTEC.com code 55322

MATERIAL: DO NOT SCALE DRAWING SHEET SCALE: 1.5:1
DC-ACR-12-M: ZINC ALLOY
ACCLS-12-M: ZINC ALLOY
ACCRT-12: STAINLESS STEEL
ACCL-12-X: SILICONE

DESCRIPTION:
ACCLIMATE CIRC. PANEL DUST CAP

DWG. NO. DCA-ACR-12-M-X

BY: D.SCHMELZ 09/16/2010 SHEET 1 OF 1