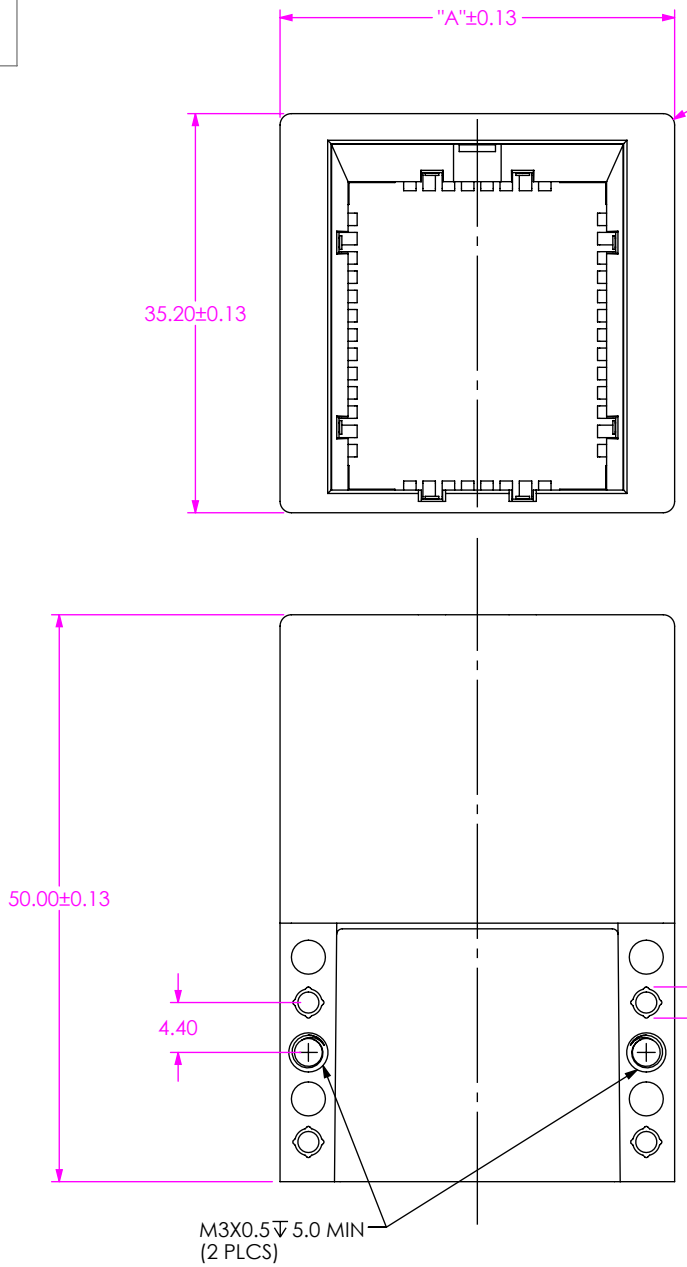


DESIGNED AND DIMENSIONED IN MILLIMETERS[INCHES]
ALL DIMENSIONS REFERENCE EXCEPT AS SHOWN

DO NOT
SCALE FROM
THIS PRINT

EBTC-4-XX-X
 No OF PAIRS (PER COLUMN) -4
 PORT SIZE -1
 COLUMNS *-06
 -08 (* = NOT TOOLED)



R1.00 [.039]
(4 PLCS)

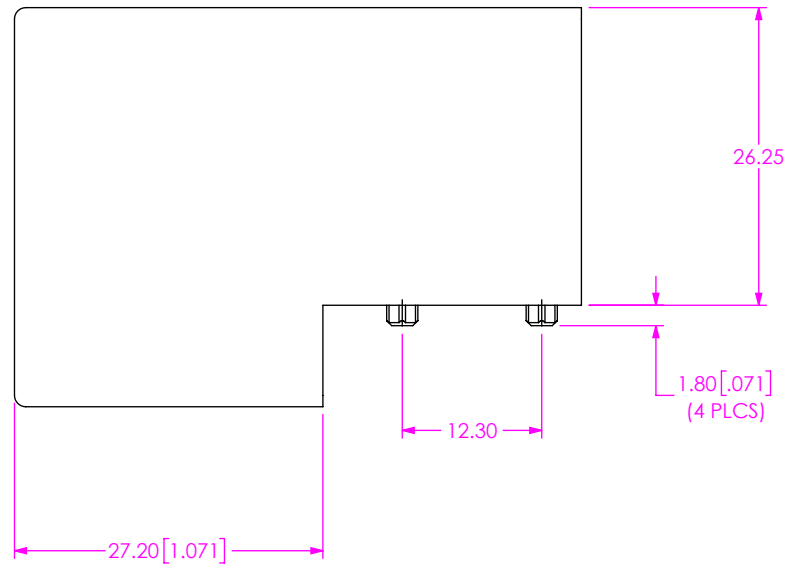


FIG 1
EBTC-4-08-1 SHOWN

| COLUMNS | "A" |
|---------|-------|
| -06 | 30.80 |
| -08 | 34.80 |

- NOTES:
1. PARTS TO BE PACKAGED IN TRAYS.
 2. ORDERS WILL BE PACKAGED ACCORDING TO THE SAMTEC PACKAGING EFFICIENCY STANDARDS (SPES) FOUND ON WWW.SAMTEC.COM
 3. PANEL TO BE LOCATED WITHIN THIS RANGE.

PROPRIETARY NOTE
 THIS DOCUMENT CONTAINS CONFIDENTIAL AND PROPRIETARY INFORMATION AND ALL DESIGN, MANUFACTURING, REPRODUCTION, USE, PATENT RIGHTS AND SALES RIGHTS ARE EXPRESSLY RESERVED BY SAMTEC, INC. THIS DOCUMENT SHALL NOT BE DISCLOSED, IN WHOLE OR PART, TO ANY UNAUTHORIZED PERSON OR ENTITY NOR REPRODUCED, TRANSFERRED OR INCORPORATED IN ANY OTHER PROJECT IN ANY MANNER WITHOUT THE EXPRESS WRITTEN CONSENT OF SAMTEC, INC.

DO NOT SCALE DRAWING
SHEET SCALE: 3:2

MATERIAL:
DIE CAST: NICKEL PLATED ZINC ALLOY
SPRING FINGER: SS

520 PARK EAST BLVD, NEW ALBANY, IN 47150
 PHONE: 812-944-6733 FAX: 812-948-5047
 e-Mail info@SAMTEC.com code 55322

DESCRIPTION: DIE CAST FRAME, EXAMAX IO EXTERNAL CABLE PORT

DWG. NO. EBTC-4-XX-X

BY: JEFFREY Z 2/22/2023 SHEET 1 OF 2

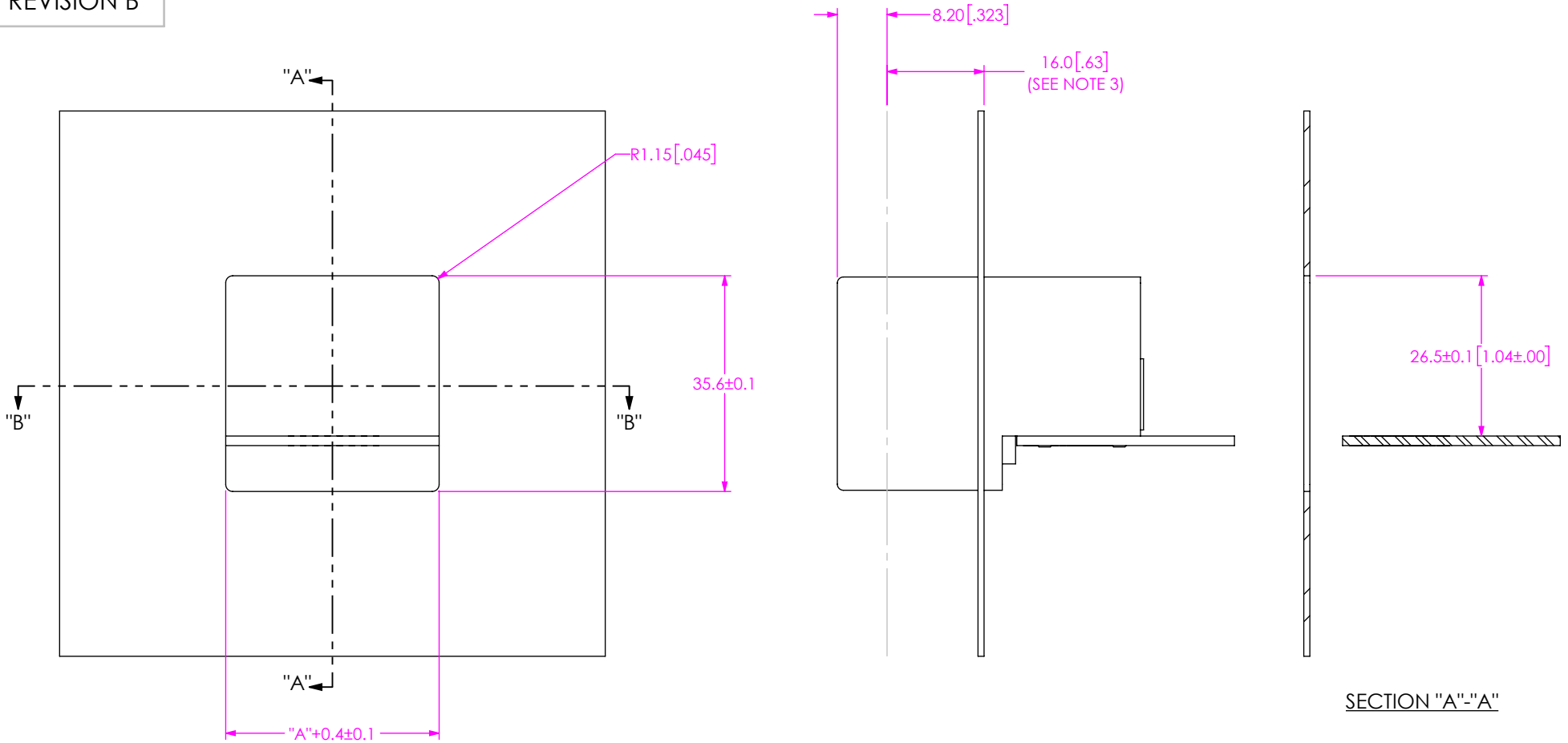
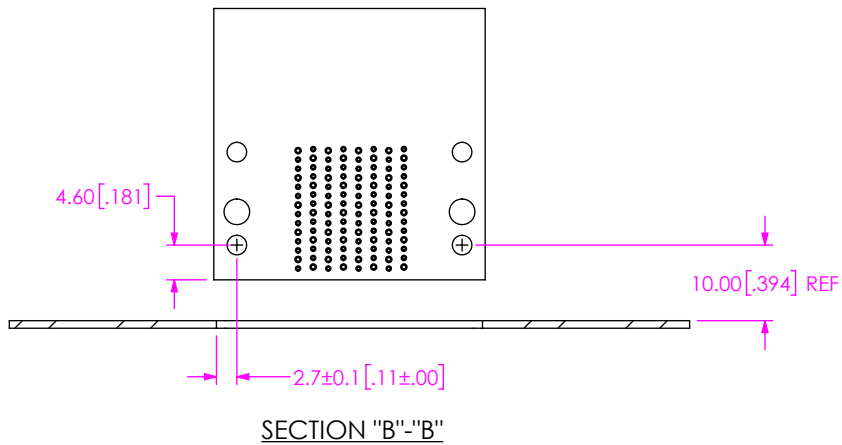


FIG 2
EBTC-4-08-1 PANEL CUT OUT SHOWN



PROPRIETARY NOTE
 THIS DOCUMENT CONTAINS CONFIDENTIAL AND PROPRIETARY INFORMATION AND ALL DESIGN, MANUFACTURING, REPRODUCTION, USE, PATENT RIGHTS AND SALES RIGHTS ARE EXPRESSLY RESERVED BY SAMTEC, INC. THIS DOCUMENT SHALL NOT BE DISCLOSED, IN WHOLE OR PART, TO ANY UNAUTHORIZED PERSON OR ENTITY NOR REPRODUCED, TRANSFERRED OR INCORPORATED IN ANY OTHER PROJECT IN ANY MANNER WITHOUT THE EXPRESS WRITTEN CONSENT OF SAMTEC, INC.



520 PARK EAST BLVD, NEW ALBANY, IN 47150
 PHONE: 812-944-6733 FAX: 812-948-5047
 e-Mail info@SAMTEC.com code 55322

SHEET SCALE: 1:1
 DO NOT SCALE DRAWING

DESCRIPTION: DIE CAST FRAME, EXAMAX IO EXTERNAL CABLE PORT

DWG. NO. EBTC-4-XX-X

BY: JEFFREY Z 2/22/2023 SHEET 2 OF 2