

FIG 1
EBTM-4-10-2.0-X-RA-X SHOWN

TABLE 1		
TIN (IMMERSION)	Cu	0.020-0.069 [.0008-.0027]
	Sn	0.001-0.002 [.00004-.00008]

TABLE 2					
COLUMNS	"A"	"B"	"C"	"K"	"L"
-06	11.90 [.469]	10.00 [.394]	18.35 [.722]	1.15 [.045]	0.75 [.030]
-08	15.90 [.626]	14.00 [.551]	22.35 [.880]	1.15 [.045]	0.75 [.030]
-10	19.90 [.783]	18.00 [.709]	26.35 [1.037]	1.15 [.045]	0.75 [.030]

NOTES:

1. CONNECTOR ENVELOPE DIMENSIONS. OTHER COMPONENTS PLACED ON PCB SHALL AVOID THIS ZONE.
2. COPPER PLATING THICKNESS MAY NOT VARY BY MORE THAN 0.02[.001] WITHIN ANY VIA.
3. CONTACT SAMTEC FOR CONNECTOR PRESS FIT INSTRUCTIONS AND REQUIRED FIXTURES.
4. LEFT AND RIGHT GUIDANCE CONNECTORS INCLUDE A METAL HOLD-DOWN INSERT AND UTILIZE M2 SCREWS TO SECURE THE CONNECTOR TO THE PCB. DO NOT PUT TOP LEVEL TRACES OR VIAS IN THESE KEEP OUT ZONES. IF SCREWS HAVE AN OUTSIDE DIAMETER LARGER THAN 5.0MM, THEN ADDITIONAL CLEARANCE WILL BE REQUIRED FOR THE BOTTOM OF THE PCB.
5. ALL GROUNDS WITHIN A COLUMN ARE COMMON.

PROPRIETARY NOTE
THIS DOCUMENT CONTAINS CONFIDENTIAL AND PROPRIETARY INFORMATION AND ALL DESIGN, MANUFACTURING, REPRODUCTION, USE, PATENT RIGHTS AND SALES RIGHTS ARE EXPRESSLY RESERVED BY SAMTEC, INC. THIS DOCUMENT SHALL NOT BE DISCLOSED, IN WHOLE OR PART, TO ANY UNAUTHORIZED PERSON OR ENTITY NOR REPRODUCED, TRANSFERRED OR INCORPORATED IN ANY OTHER PROJECT IN ANY MANNER WITHOUT THE EXPRESS WRITTEN CONSENT OF SAMTEC, INC.



520 PARK EAST BLVD, NEW ALBANY, IN 47150
PHONE: 812-944-6733 FAX: 812-948-5047
e-Mail info@SAMTEC.com code 55322

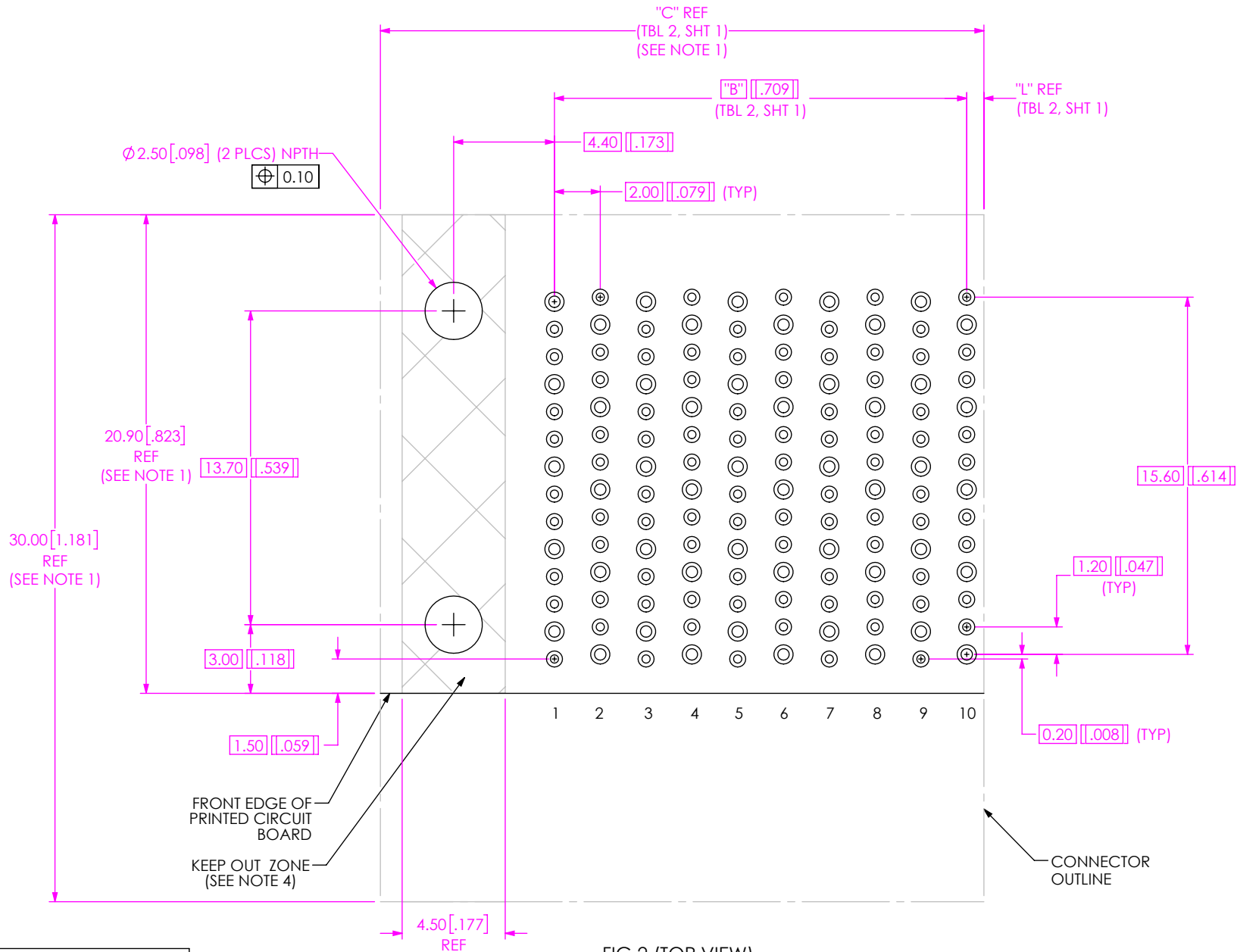
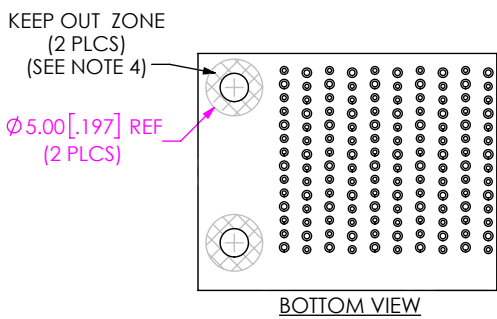


FIG 2 (TOP VIEW)
EBTM-4-10-2.0-X-RA-X-R-X SHOWN
(DIFFERENT AS SHOWN, OTHERWISE SAME AS FIG 1)



PROPRIETARY NOTE
THIS DOCUMENT CONTAINS CONFIDENTIAL AND PROPRIETARY INFORMATION AND ALL DESIGN, MANUFACTURING, REPRODUCTION, USE, PATENT RIGHTS AND SALES RIGHTS ARE EXPRESSLY RESERVED BY SAMTEC, INC. THIS DOCUMENT SHALL NOT BE DISCLOSED, IN WHOLE OR PART, TO ANY UNAUTHORIZED PERSON OR ENTITY NOR REPRODUCED, TRANSFERRED OR INCORPORATED IN ANY OTHER PROJECT IN ANY MANNER WITHOUT THE EXPRESS WRITTEN CONSENT OF SAMTEC, INC.



520 PARK EAST BLVD, NEW ALBANY, IN 47150
PHONE: 812-944-6733 FAX: 812-948-5047
e-Mail info@SAMTEC.com code 55322

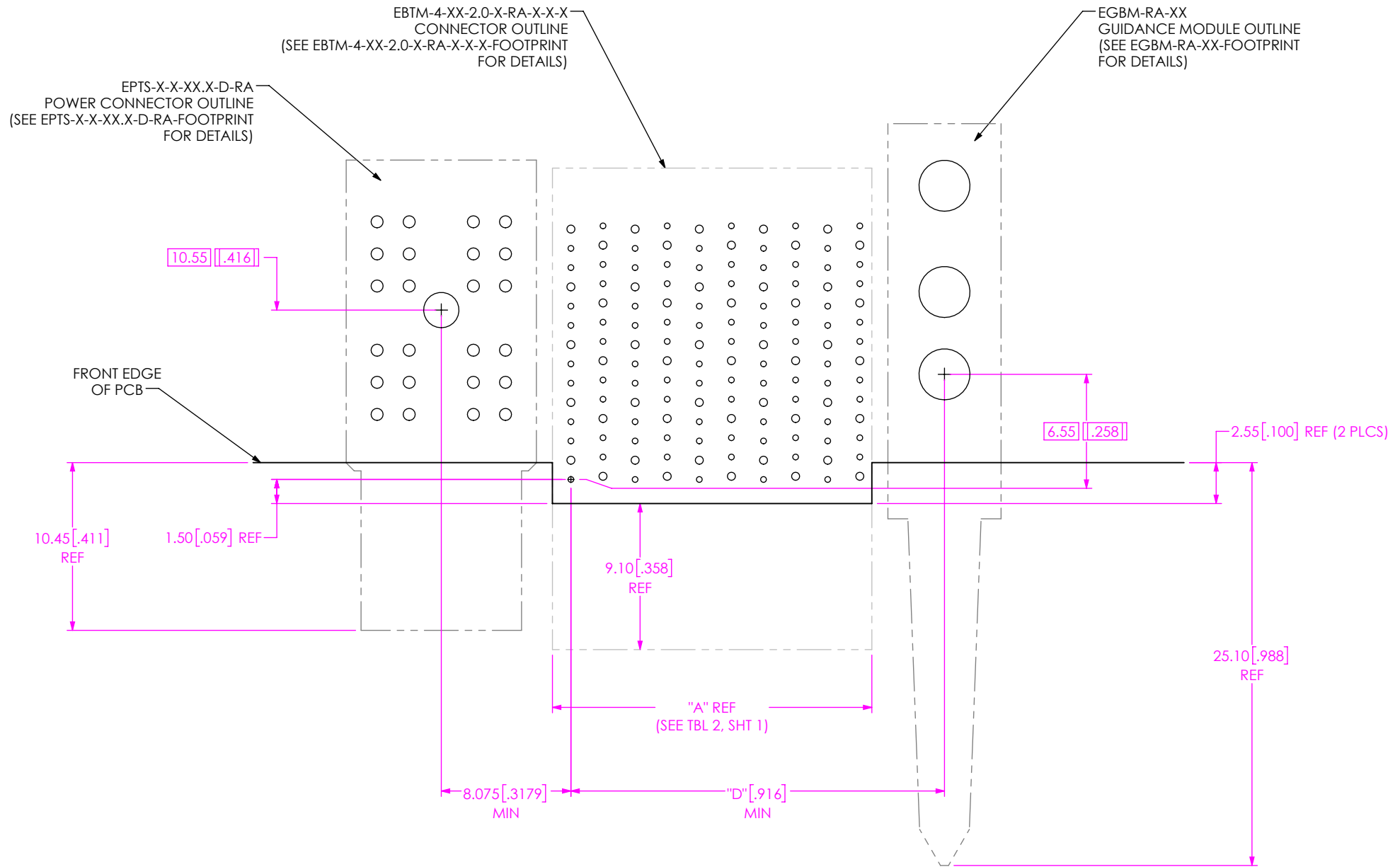


FIG 4
 SIGNAL, POWER AND GUIDANCE COMBO
 EGBM-RA-XX-FOOTPRINT, EPTS-X-X-XX.X-D-RA-FOOTPRINT
 AND EBTM-4-10-2.0-X-RA-X-X-X-FOOTPRINT SHOWN

TABLE 3

COLUMNS	"D"
-06	15.275 [0.6014]
-08	19.275 [0.7589]
-10	23.275 [0.9163]

PROPRIETARY NOTE
 THIS DOCUMENT CONTAINS CONFIDENTIAL AND PROPRIETARY INFORMATION AND ALL DESIGN, MANUFACTURING, REPRODUCTION, USE, PATENT RIGHTS AND SALES RIGHTS ARE EXPRESSLY RESERVED BY SAMTEC, INC. THIS DOCUMENT SHALL NOT BE DISCLOSED, IN WHOLE OR PART, TO ANY UNAUTHORIZED PERSON OR ENTITY NOR REPRODUCED, TRANSFERRED OR INCORPORATED IN ANY OTHER PROJECT IN ANY MANNER WITHOUT THE EXPRESS WRITTEN CONSENT OF SAMTEC, INC.



520 PARK EAST BLVD, NEW ALBANY, IN 47150
 PHONE: 812-944-6733 FAX: 812-948-5047
 e-Mail info@SAMTEC.com code 55322

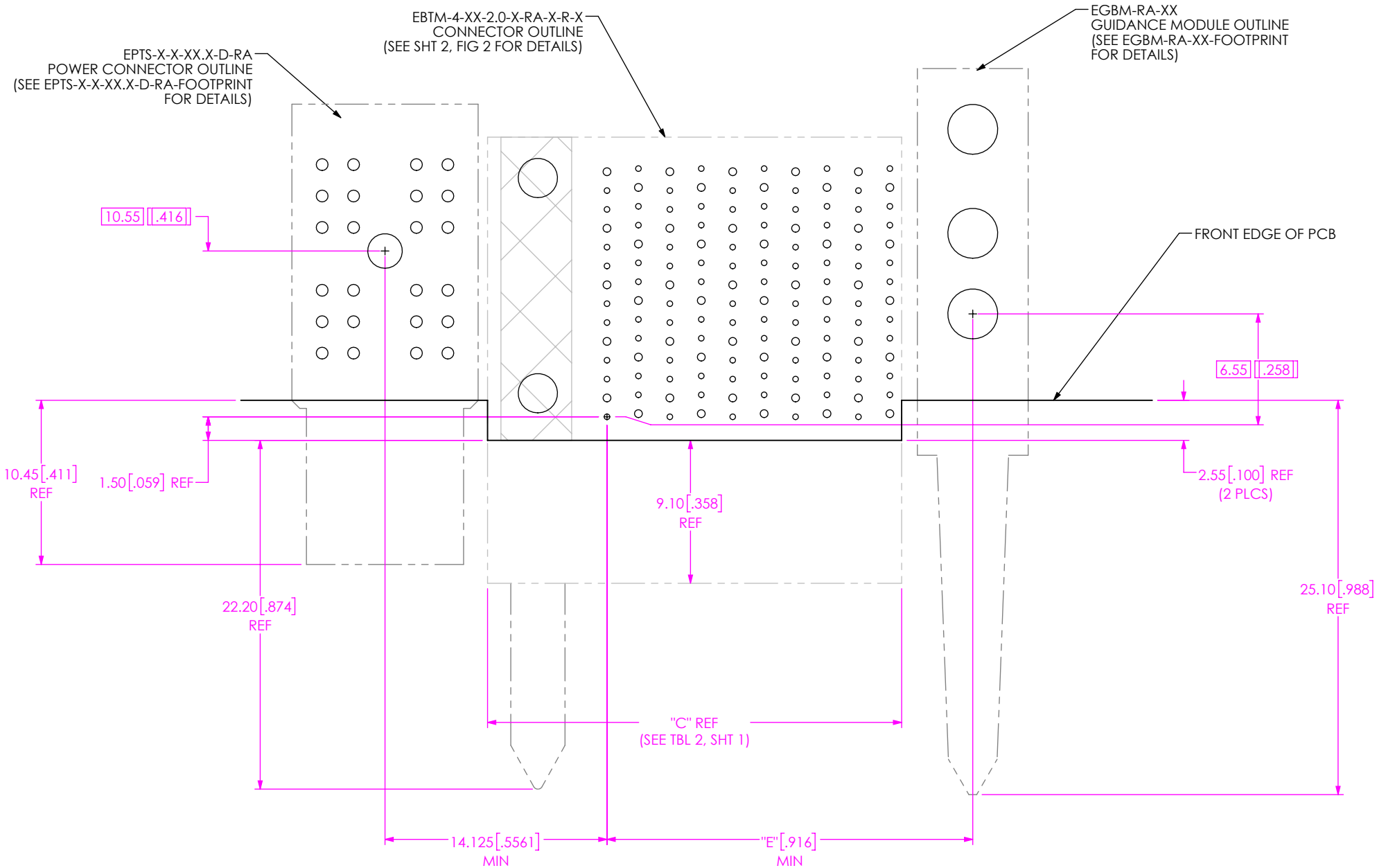


TABLE 4

COLUMNS	"E"
-06	15.275 [0.6014]
-08	19.275 [0.7589]
-10	23.275 [0.9163]

FIG 5
 SIGNAL, POWER, INTERNAL (-R) AND EXTERNAL GUIDANCE COMBO
 EGBM-RA-XX-FOOTPRINT, EPTS-X-X-XX.X-D-RA-FOOTPRINT
 AND *EBTM-4-10-2.0-X-RA-X-R-X-FOOTPRINT SHOWN
 (*=NOT ENGINEERING APPROVED)

PROPRIETARY NOTE
 THIS DOCUMENT CONTAINS CONFIDENTIAL AND PROPRIETARY INFORMATION AND ALL DESIGN, MANUFACTURING, REPRODUCTION, USE, PATENT RIGHTS AND SALES RIGHTS ARE EXPRESSLY RESERVED BY SAMTEC, INC. THIS DOCUMENT SHALL NOT BE DISCLOSED, IN WHOLE OR PART, TO ANY UNAUTHORIZED PERSON OR ENTITY NOR REPRODUCED, TRANSFERRED OR INCORPORATED IN ANY OTHER PROJECT IN ANY MANNER WITHOUT THE EXPRESS WRITTEN CONSENT OF SAMTEC, INC.

samtec
 520 PARK EAST BLVD, NEW ALBANY, IN 47150
 PHONE: 812-944-6733 FAX: 812-948-5047
 e-Mail info@SAMTEC.com code 55322

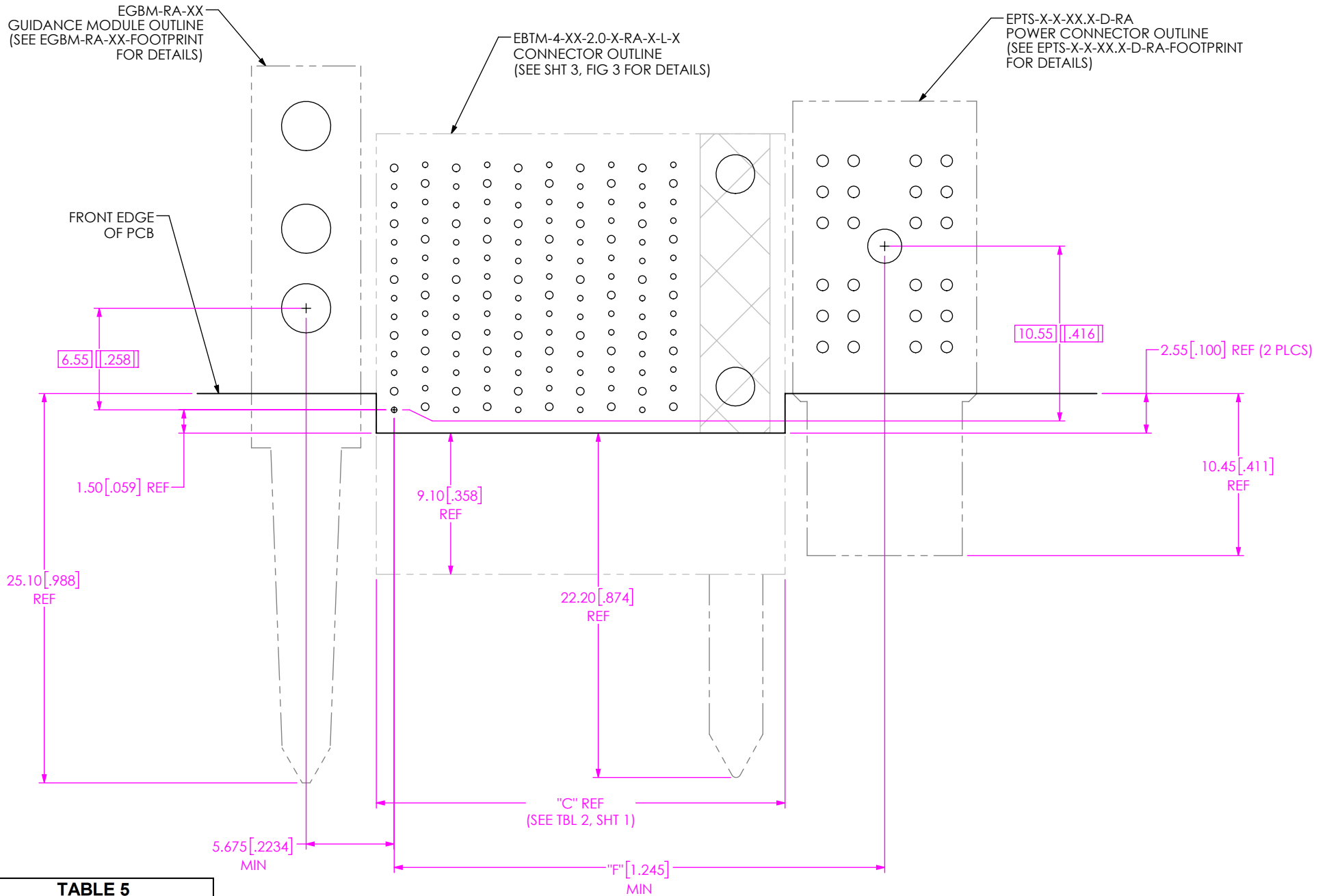


TABLE 5

COLUMNS	"F"
-06	23.625 [.9301]
-08	27.625 [1.0876]
-10	31.625 [1.2451]

FIG 6
 SIGNAL, POWER, INTERNAL (-L) AND EXTERNAL GUIDANCE COMBO
 EGBM-RA-XX-FOOTPRINT, EPTS-X-X-XX.X-D-RA-FOOTPRINT
 AND *EBTM-4-10-2.0-X-RA-X-L-X-FOOTPRINT SHOWN
 (*=NOT ENGINEERING APPROVED)

PROPRIETARY NOTE
 THIS DOCUMENT CONTAINS CONFIDENTIAL AND
 PROPRIETARY INFORMATION AND ALL DESIGN,
 MANUFACTURING, REPRODUCTION, USE, PATENT RIGHTS
 AND SALES RIGHTS ARE EXPRESSLY RESERVED BY SAMTEC,
 INC. THIS DOCUMENT SHALL NOT BE DISCLOSED, IN WHOLE
 OR PART, TO ANY UNAUTHORIZED PERSON OR ENTITY NOR
 REPRODUCED, TRANSFERRED OR INCORPORATED IN ANY
 OTHER PROJECT IN ANY MANNER WITHOUT THE EXPRESS
 WRITTEN CONSENT OF SAMTEC, INC.



520 PARK EAST BLVD, NEW ALBANY, IN 47150
 PHONE: 812-944-6733 FAX: 812-948-5047
 e-Mail info@SAMTEC.com code 55322