

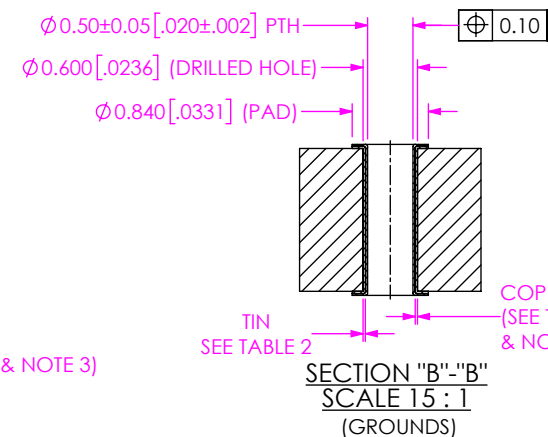
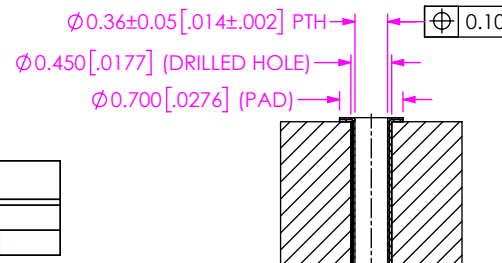
TABLE 1	
COLUMN	"A"
-06	10.00 [.394]
-08	14.00 [.551]
-10	18.00 [.709]
-12	22.00 [.866]

TABLE 2		
TIN (IMMERSION)	Cu	0.020-0.069 [.0008-.0027]
	Sn	0.0010-0.0020 [.00004-.00008]

## NOTES:

1. ALL DIMENSIONS ARE SYMMETRIC ABOUT THE CENTERLINE.
2. CONNECTOR ENVELOPE DIMENSION. OTHER COMPONENTS PLACED ON PCB SHALL AVOID THIS ZONE.
3. COPPER PLATING THICKNESS MAY NOT VARY BY MORE THAN 0.02 MM WITHIN ANY VIA.
4. CONTACT SAMTEC FOR CONNECTOR PRESS FIT INSTRUCTIONS AND REQUIRED FIXTURES.
5. SHROUD PEGS WILL BE INSERTED INTO THESE HOLES.
6. LEFT AND RIGHT GUIDANCE CONNECTORS INCLUDE A METAL HOLD-DOWN INSERT AND UTILIZE M2 SCREWS TO SECURE THE CONNECTOR TO THE PCB. DO NOT PUT TOP LEVEL TRACES OR VIAS IN THESE KEEP OUT ZONES. IF SCREWS HAVE AN OUTSIDE DIAMETER LARGER THAN 4.0MM, THEN ADDITIONAL CLEARANCE WILL BE REQUIRED FOR THE BOTTOM OF THE PCB.
7. ALL GROUNDS WITHIN A COLUMN ARE COMMON.

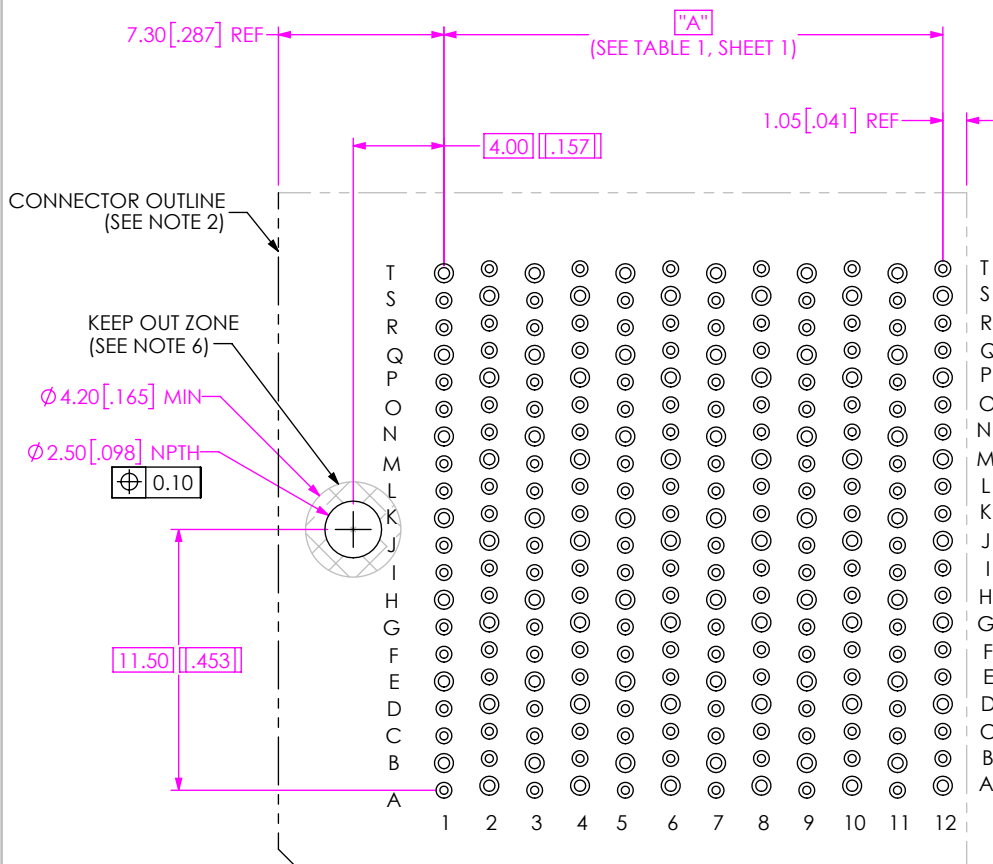
F:\DWG\MISC\Mktg\Footprint\EBTM-6-XX-2.0-X-VT-X-X-FOOTPRINT.slddrw



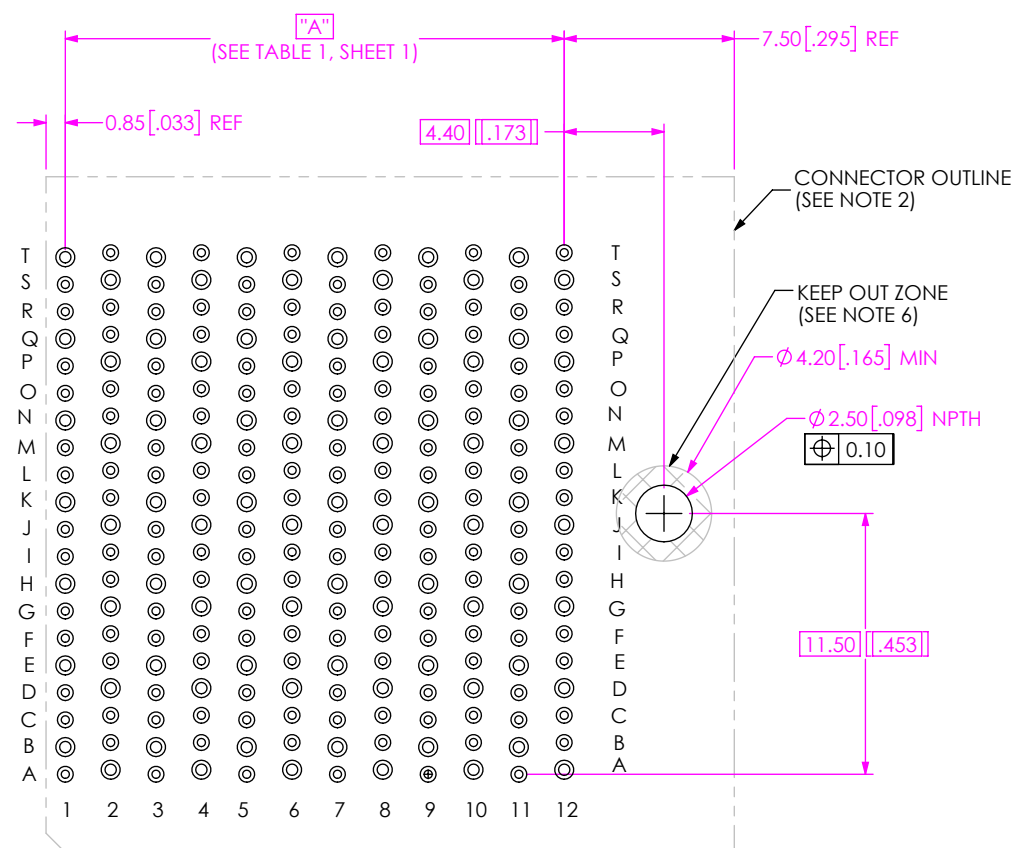
PROPRIETARY NOTE  
THIS DOCUMENT CONTAINS CONFIDENTIAL AND PROPRIETARY INFORMATION AND ALL DESIGN, MANUFACTURING, REPRODUCTION, USE, PATENT RIGHTS AND SALES RIGHTS ARE EXPRESSLY RESERVED BY SAMTEC, INC. THIS DOCUMENT SHALL NOT BE DISCLOSED, IN WHOLE OR PART, TO ANY UNAUTHORIZED PERSON OR ENTITY NOR REPRODUCED, TRANSFERRED OR INCORPORATED IN ANY OTHER PROJECT IN ANY MANNER WITHOUT THE EXPRESS WRITTEN CONSENT OF SAMTEC, INC.

**samtec**

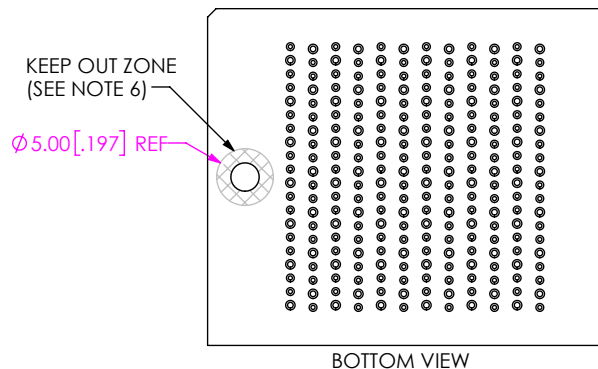
520 PARK EAST BLVD, NEW ALBANY, IN 47150  
PHONE: 812-944-6733 FAX: 812-948-5047  
e-Mail info@SAMTEC.com code 55322



**FIG 2 (TOP VIEW)**  
(EBTM-06-12-2.0-X-VT-X-R FOOTPRINT SHOWN)  
(SAME AS FIG 1 EXCEPT AS SHOWN)



**FIG 3 (TOP VIEW)**  
(EBTM-06-12-2.0-X-VT-X-L FOOTPRINT SHOWN)  
(SAME AS FIG 2 EXCEPT AS SHOWN)



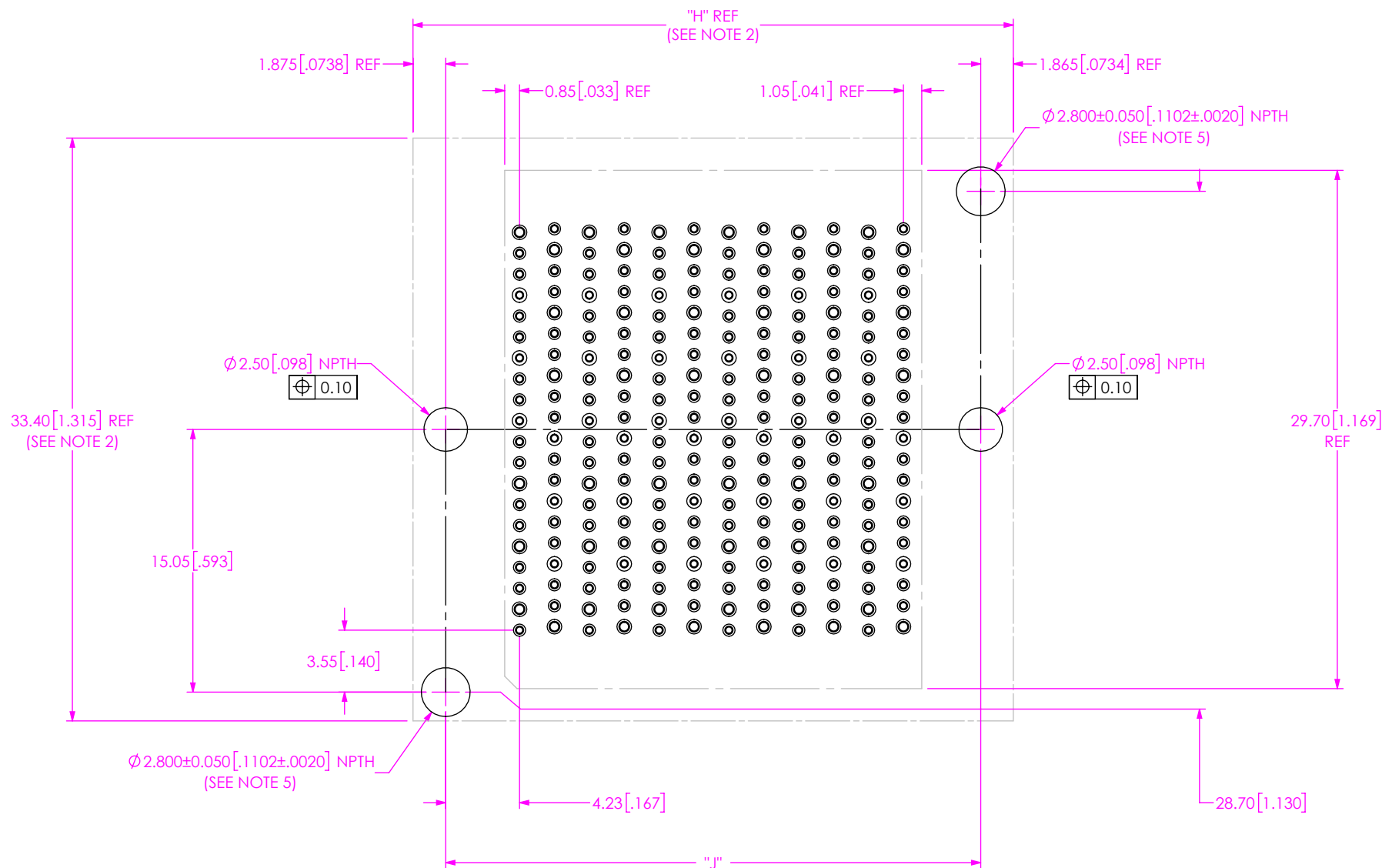


FIG 4  
(EBTM-06-12-2.0-X-VT-X WITH LATCHING BRACKET  
FOR EBCF CABLE FOOTPRINT SHOWN)  
(SAME AS FIG 1 EXCEPT AS SHOWN)

TABLE 3

NO OF COLUMNS	"H"	"J"
*-06	22.40 [.882]	18.66 [.735]
*-08	26.40 [1.039]	22.66 [.892]
*-10	30.40 [1.197]	26.66 [1.050]
** -12	34.40 [1.354]	30.66 [1.207]
*-14	38.40 [1.512]	34.66 [1.365]
*-16	42.40 [1.669]	38.66 [1.522]

\* = NOT TOOLED

\*\* = NOT ENGINEERING APPROVED

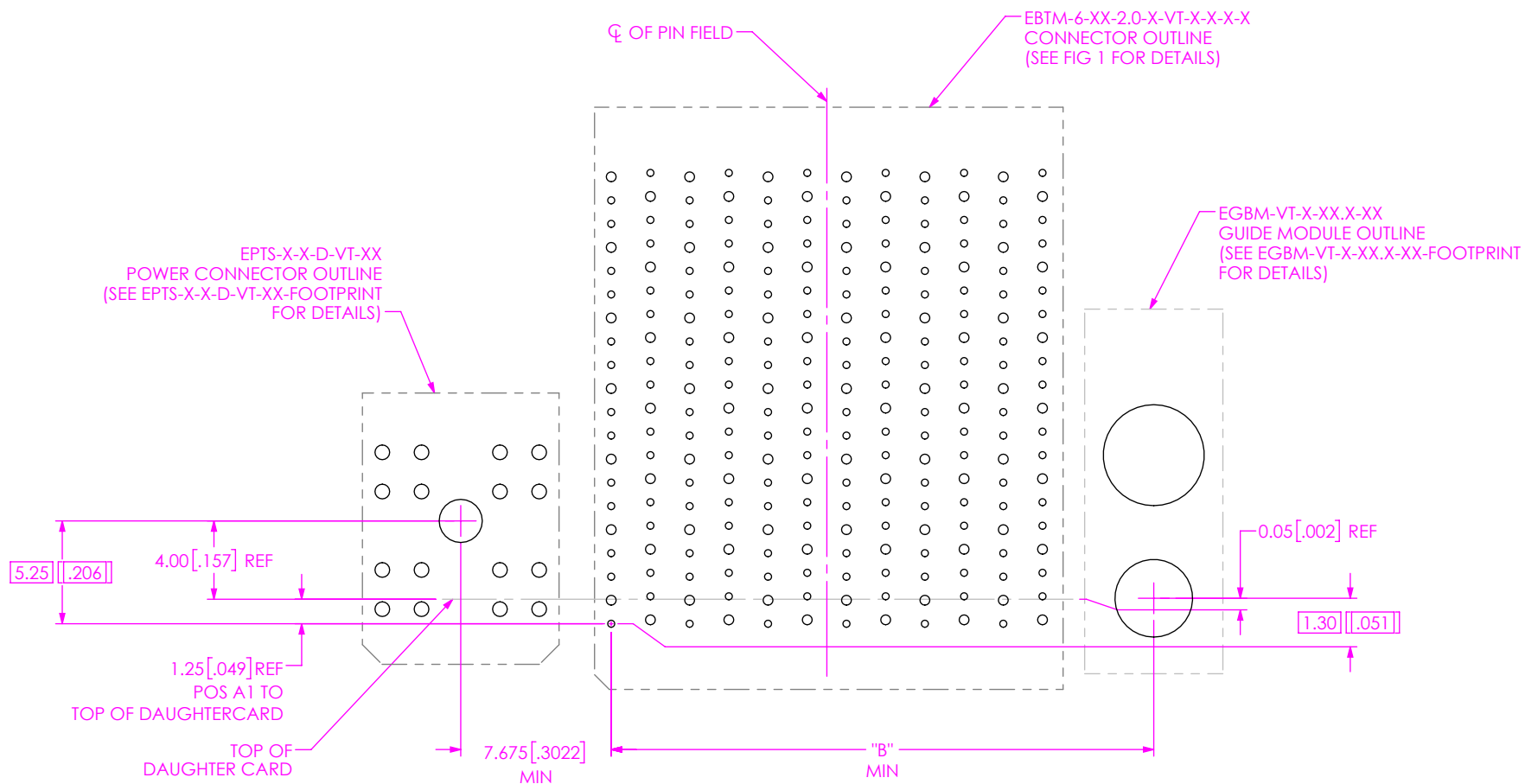


FIG 5  
SIGNAL, POWER AND EXTERNAL GUIDANCE COMBO  
(EPTS-2-P-D-VT-XX-FOOTPRINT, EBTM-6-XX-2.0-X-VT-X-X-FOOTPRINT, AND EGBM-VT-X-XX.X-20-FOOTPRINT SHOWN)

TABLE 4

COLUMNS	"B"
-06	15.675 [0.6171]
-08	19.675 [0.7746]
-10	23.675 [0.9321]
-12	27.675 [1.0896]

PROPRIETARY NOTE  
THIS DOCUMENT CONTAINS CONFIDENTIAL AND PROPRIETARY INFORMATION AND ALL DESIGN, MANUFACTURING, REPRODUCTION, USE, PATENT RIGHTS AND SALES RIGHTS ARE EXPRESSLY RESERVED BY SAMTEC, INC. THIS DOCUMENT SHALL NOT BE DISCLOSED, IN WHOLE OR PART, TO ANY UNAUTHORIZED PERSON OR ENTITY NOR REPRODUCED, TRANSFERRED OR INCORPORATED IN ANY OTHER PROJECT IN ANY MANNER WITHOUT THE EXPRESS WRITTEN CONSENT OF SAMTEC, INC.

**samtec**

520 PARK EAST BLVD, NEW ALBANY, IN 47150  
PHONE: 812-944-6733 FAX: 812-948-5047  
e-Mail: info@SAMTEC.com code 55322

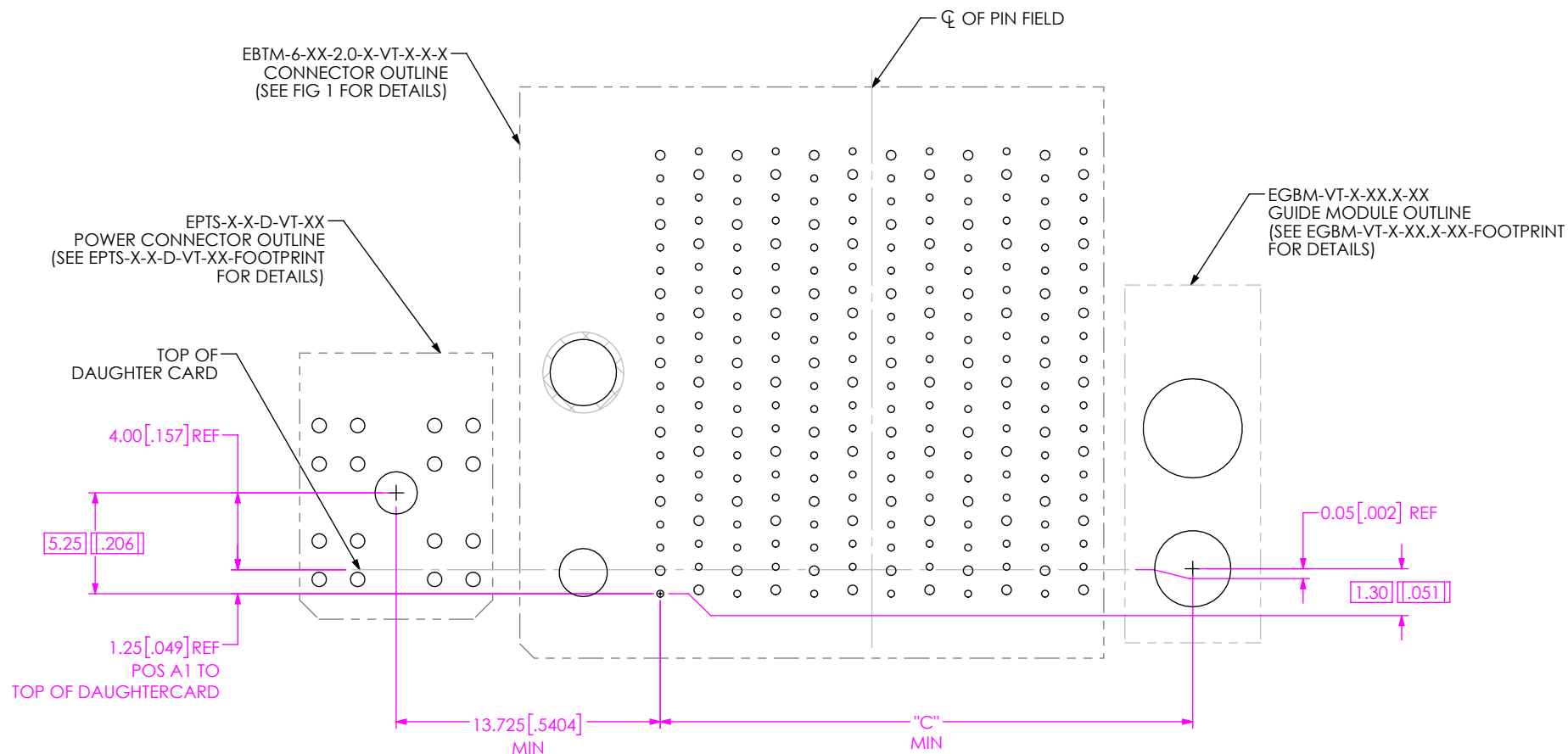


FIG 6  
SIGNAL, POWER, INTERNAL (-R) AND EXTERNAL GUIDANCE COMBO  
(EPTS-2-P-D-VT-XX-FOOTPRINT, EBTM-6-XX-2.0-X-VT-X-X-FOOTPRINT,  
AND EGBM-VT-X-XX.X-20-FOOTPRINT SHOWN)

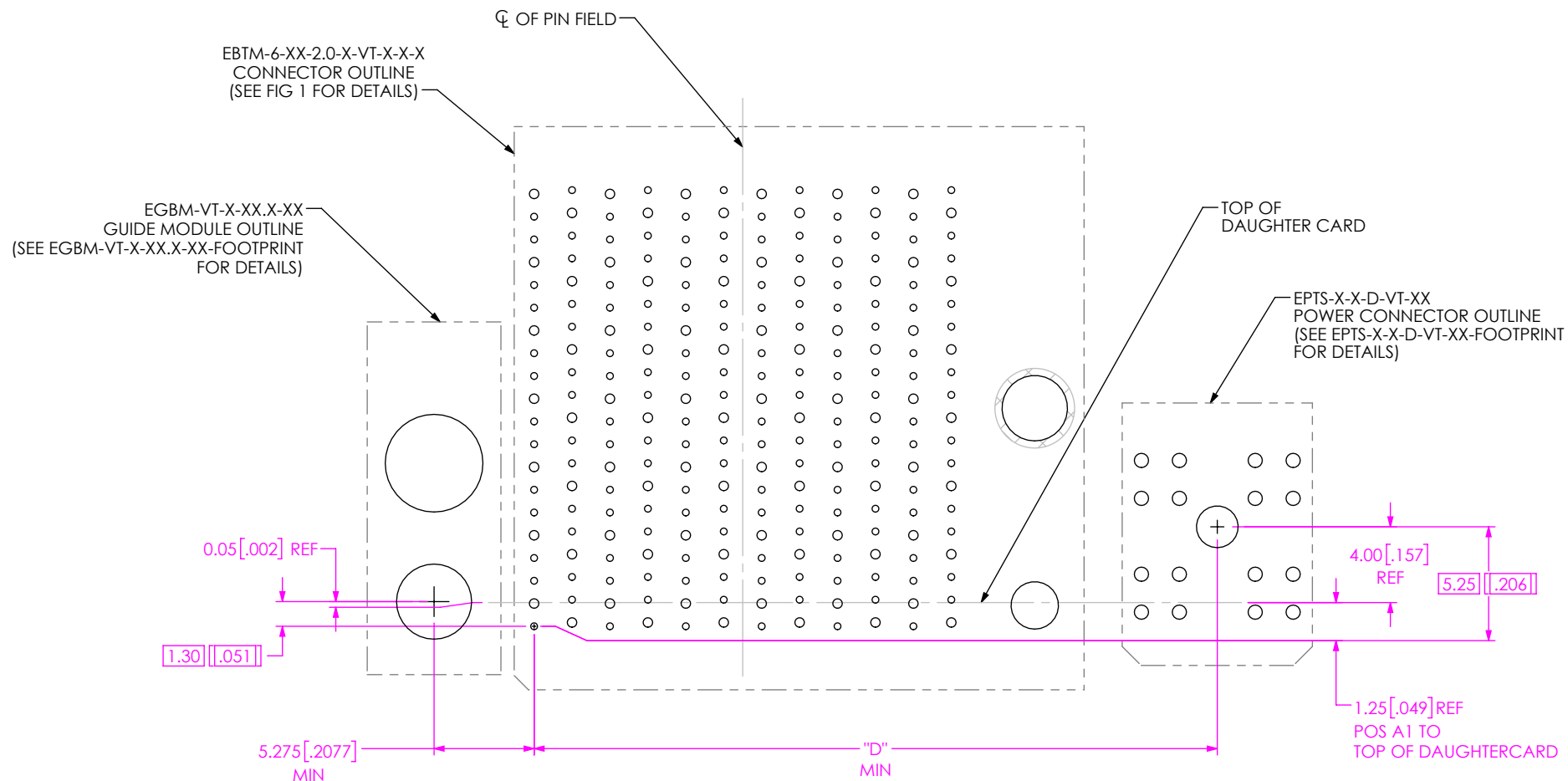
TABLE 5

COLUMNS	"C"
-06	15.675 [0.6171]
-08	19.675 [0.7746]
-10	23.675 [0.9321]
-12	27.675 [1.0896]

PROPRIETARY NOTE  
THIS DOCUMENT CONTAINS CONFIDENTIAL AND  
PROPRIETARY INFORMATION AND ALL DESIGN,  
MANUFACTURING, REPRODUCTION, USE, PATENT RIGHTS  
AND SALES RIGHTS ARE EXPRESSLY RESERVED BY SAMTEC,  
INC. THIS DOCUMENT SHALL NOT BE DISCLOSED, IN WHOLE  
OR PART, TO ANY UNAUTHORIZED PERSON OR ENTITY NOR  
REPRODUCED, TRANSFERRED OR INCORPORATED IN ANY  
OTHER PROJECT IN ANY MANNER WITHOUT THE EXPRESS  
WRITTEN CONSENT OF SAMTEC, INC.

**samtec**

520 PARK EAST BLVD, NEW ALBANY, IN 47150  
PHONE: 812-944-6733 FAX: 812-948-5047  
e-Mail info@SAMTEC.com code 55322



**FIG 7**  
SIGNAL, POWER, INTERNAL (-L) AND EXTERNAL GUIDANCE COMBO  
(EPTS-2-P-D-VT-XX-FOOTPRINT, EBTM-6-XX-2.0-X-VT-X-X-L-FOOTPRINT,  
AND EGBM-VT-X-XX.X-20-FOOTPRINT SHOWN)

**TABLE 6**

COLUMNS	"D"
-06	24.025 [0.9459]
-08	28.025 [1.1033]
-10	32.025 [1.2608]
-12	36.025 [1.4183]

**PROPRIETARY NOTE**

THIS DOCUMENT CONTAINS CONFIDENTIAL AND  
PROPRIETARY INFORMATION AND ALL DESIGN,  
MANUFACTURING, REPRODUCTION, USE, PATENT RIGHTS  
AND SALES RIGHTS ARE EXPRESSLY RESERVED BY SAMTEC,  
INC. THIS DOCUMENT SHALL NOT BE DISCLOSED, IN WHOLE  
OR PART, TO ANY UNAUTHORIZED PERSON OR ENTITY NOR  
REPRODUCED, TRANSFERRED OR INCORPORATED IN ANY  
OTHER PROJECT IN ANY MANNER WITHOUT THE EXPRESS  
WRITTEN CONSENT OF SAMTEC, INC.

**samtec**

520 PARK EAST BLVD, NEW ALBANY, IN 47150  
PHONE: 812-944-6733 FAX: 812-948-5047  
e-Mail info@SAMTEC.com code 55322