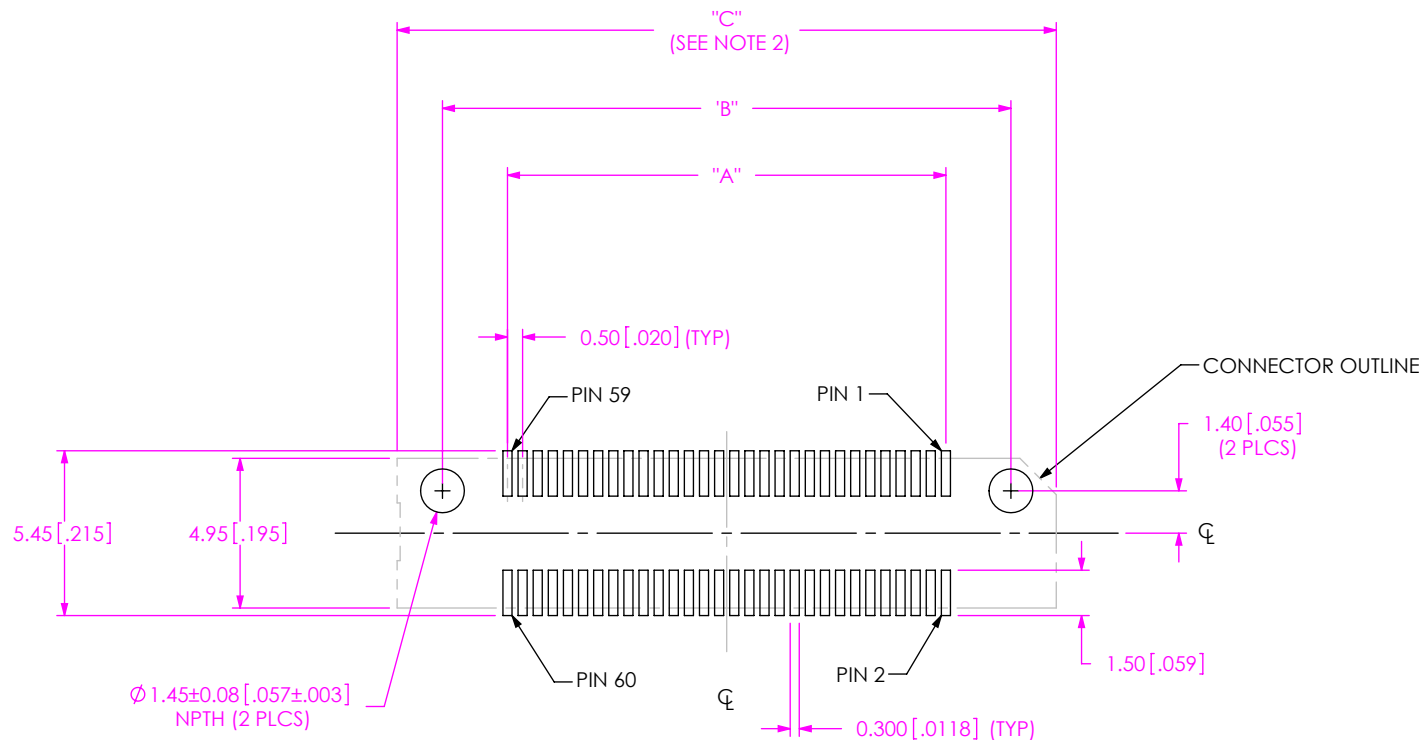


DESIGNED & DIMENSIONED
IN MILLIMETERS[INCHES]FIG 1
-030 POSITION SHOWN

NOTES:

1. ALL DIMENSIONS ARE SYMMETRIC ABOUT THE CENTERLINE, EXCEPT AS SHOWN.
2. CONNECTOR ENVELOPE DIMENSIONS. OTHER COMPONENTS PLACED ON PCB SHALL AVOID THIS ZONE.

TABLE 1			
POSITION	"A"	"B"	"C"
-005	2.00 [0.079]	6.30 [0.248]	9.30 [0.366]
-010	4.50 [0.177]	8.80 [0.346]	11.80 [0.465]
-020	9.50 [0.374]	13.80 [0.543]	16.80 [0.661]
-030	14.50 [0.571]	18.80 [0.740]	21.80 [0.858]
-040	19.50 [0.768]	23.80 [0.937]	26.80 [1.055]
-050	24.50 [0.965]	28.80 [1.134]	31.80 [1.252]
-060	29.50 [1.161]	33.80 [1.330]	36.80 [1.449]
-070	34.50 [1.358]	38.80 [1.527]	41.80 [1.646]
-075	37.00 [1.457]	41.30 [1.626]	44.30 [1.744]

PROPRIETARY NOTE
THIS DOCUMENT CONTAINS CONFIDENTIAL AND PROPRIETARY INFORMATION AND ALL DESIGN, MANUFACTURING, REPRODUCTION, USE, PATENT RIGHTS AND SALES RIGHTS ARE EXPRESSLY RESERVED BY SAMTEC, INC. THIS DOCUMENT SHALL NOT BE DISCLOSED, IN WHOLE OR PART, TO ANY UNAUTHORIZED PERSON OR ENTITY NOR REPRODUCED, TRANSFERRED OR INCORPORATED IN ANY OTHER PROJECT IN ANY MANNER WITHOUT THE EXPRESS WRITTEN CONSENT OF SAMTEC, INC.

samtec

520 PARK EAST BLVD, NEW ALBANY, IN 47150
PHONE: 812-944-6733 FAX: 812-948-5047
e-Mail: info@SAMTEC.com code: 55322

DESIGNED & DIMENSIONED
IN MILLIMETERS[INCHES]

NOTE:
STENCIL TO BE 0.152[.006] THICK.

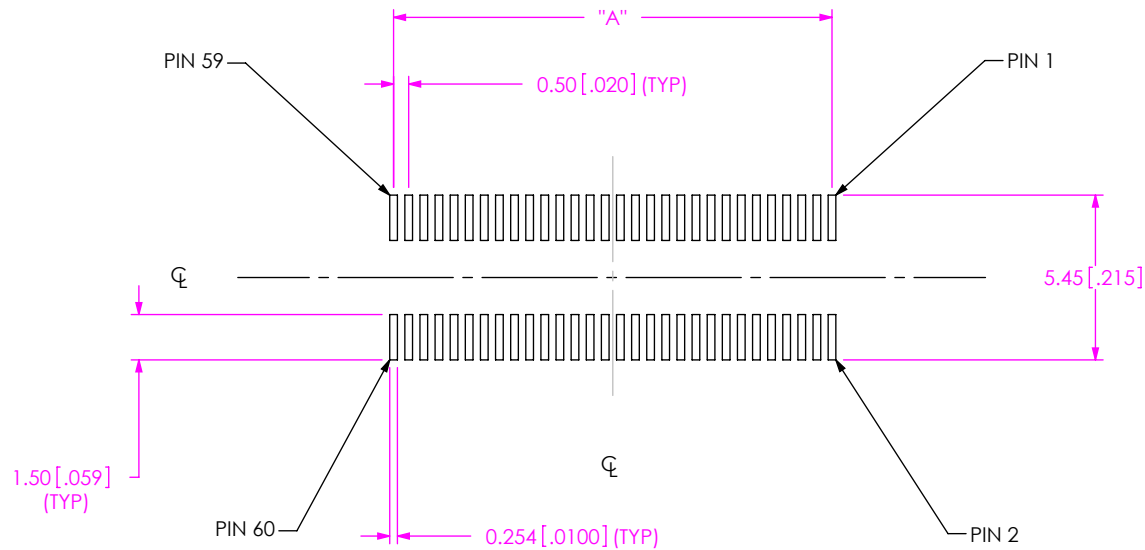


FIG 2
-030 POSITION SHOWN

* PROPRIETARY NOTE *

THIS DOCUMENT CONTAINS CONFIDENTIAL AND PROPRIETARY INFORMATION AND ALL DESIGN, MANUFACTURING, REPRODUCTION, USE, PATENT RIGHTS AND SALES RIGHTS ARE EXPRESSLY RESERVED BY SAMTEC, INC. THIS DOCUMENT SHALL NOT BE DISCLOSED, IN WHOLE OR PART, TO ANY UNAUTHORIZED PERSON OR ENTITY NOR REPRODUCED, TRANSFERRED OR INCORPORATED IN ANY OTHER PROJECT IN ANY MANNER WITHOUT THE EXPRESS WRITTEN CONSENT OF SAMTEC, INC.

samtec

520 PARK EAST BLVD, NEW ALBANY, IN 47150
PHONE: 812-944-6733 FAX: 812-948-5047
e-Mail: info@SAMTEC.com code: 55322

NOTE:
STENCIL TO BE 0.152[.006] THICK.

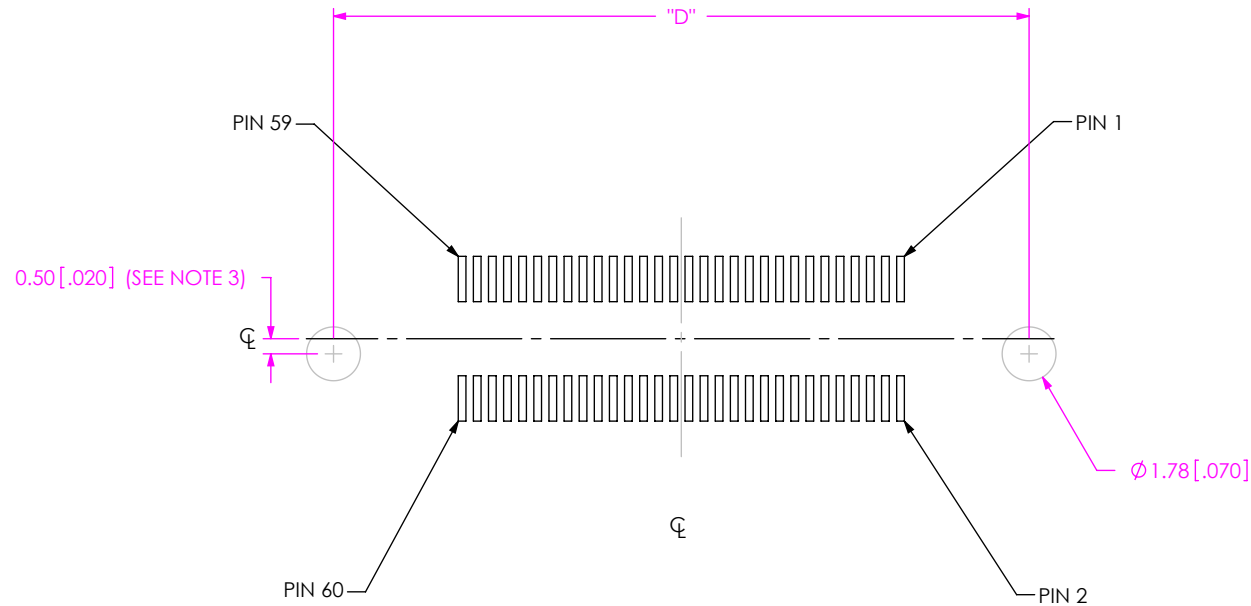


FIG 4
-030 POSITION WITH -FL OR -WT SHOWN
(DIFFERENT AS SHOWN, OTHERWISE THE SAME AS FIG 2)

TABLE 4		
POSITION	"D"	
-005	10.50	[0.413]
-010	13.00	[0.512]
-020	18.00	[0.709]
-030	23.00	[0.906]
-040	28.00	[1.102]
-050	33.00	[1.299]
-060	38.00	[1.496]
-070	43.00	[1.693]
-075	45.50	[1.791]

* PROPRIETARY NOTE *

THIS DOCUMENT CONTAINS CONFIDENTIAL AND PROPRIETARY INFORMATION AND ALL DESIGN, MANUFACTURING, REPRODUCTION, USE, PATENT RIGHTS AND SALES RIGHTS ARE EXPRESSLY RESERVED BY SAMTEC, INC. THIS DOCUMENT SHALL NOT BE DISCLOSED, IN WHOLE OR PART, TO ANY UNAUTHORIZED PERSON OR ENTITY NOR REPRODUCED, TRANSFERRED OR INCORPORATED IN ANY OTHER PROJECT IN ANY MANNER WITHOUT THE EXPRESS WRITTEN CONSENT OF SAMTEC, INC.

samtec

520 PARK EAST BLVD, NEW ALBANY, IN 47150
PHONE: 812-944-6733 FAX: 812-948-5047
e-Mail: info@SAMTEC.com code: 55322

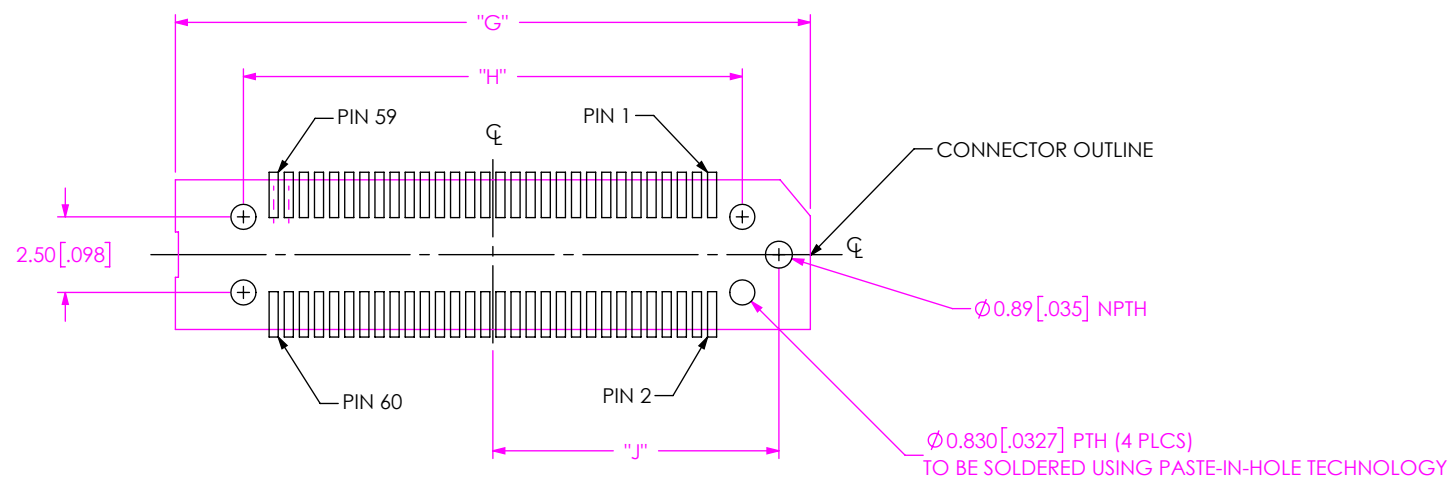


FIG 5
-030 POSITION WITH -L SHOWN
(DIFFERENT AS SHOWN, OTHERWISE THE SAME AS FIG 1)

TABLE 4

POSITION	"G"	"H"	"J"
-005	8.50 [0.335]	4.00 [0.157]	3.21 [0.126]
-010	11.00 [0.433]	6.50 [0.256]	4.46 [0.176]
-020	16.00 [0.630]	11.50 [0.453]	6.96 [0.274]
-030	21.00 [0.827]	16.50 [0.650]	9.46 [0.372]
-040	26.00 [1.024]	21.50 [0.846]	11.96 [0.471]
-050	31.00 [1.220]	26.50 [1.043]	14.46 [0.569]
-060	36.00 [1.496]	31.50 [1.566]	16.96 [1.448]
-070	41.00 [1.692]	36.50 [1.763]	19.46 [1.645]
-075	43.50 [1.791]	39.00 [1.862]	20.71 [1.744]

F

PROPRIETARY NOTE
THIS DOCUMENT CONTAINS CONFIDENTIAL AND PROPRIETARY INFORMATION AND ALL DESIGN, MANUFACTURING, REPRODUCTION, USE, PATENT RIGHTS AND SALES RIGHTS ARE EXPRESSLY RESERVED BY SAMTEC, INC. THIS DOCUMENT SHALL NOT BE DISCLOSED, IN WHOLE OR PART, TO ANY UNAUTHORIZED PERSON OR ENTITY NOR REPRODUCED, TRANSFERRED OR INCORPORATED IN ANY OTHER PROJECT IN ANY MANNER WITHOUT THE EXPRESS WRITTEN CONSENT OF SAMTEC, INC.

samtec

520 PARK EAST BLVD, NEW ALBANY, IN 47150
PHONE: 812-944-6733 FAX: 812-948-5047
e-Mail: info@SAMTEC.com code: 55322

NOTE:
STENCIL TO BE 0.152[.006] THICK.

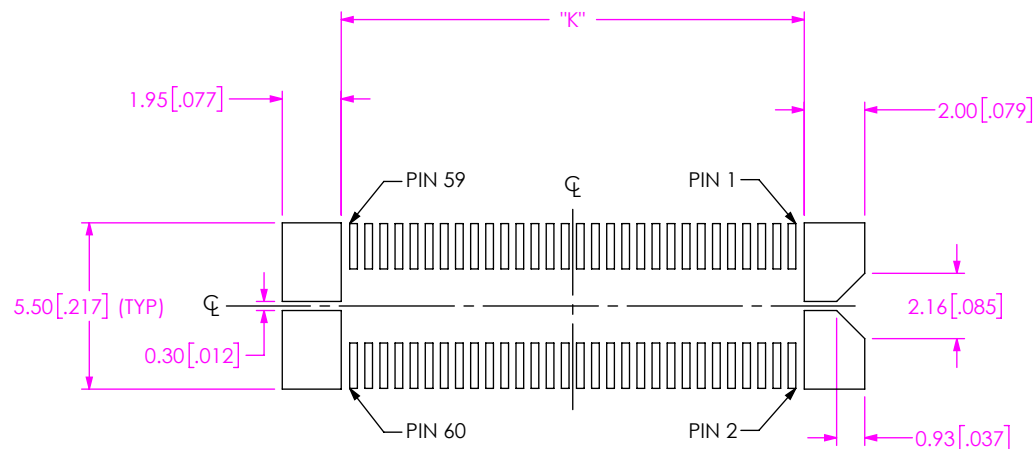


FIG 6
-030 POSITION WITH -L SHOWN
(DIFFERENT AS SHOWN, OTHERWISE THE SAME AS FIG 2)

TABLE 5	
POSITION	"K"
-005	2.81 [0.111]
-010	5.31 [0.209]
-020	10.31 [0.406]
-030	15.31 [0.603]
-040	20.31 [0.800]
-050	25.31 [0.996]
-060	30.31 [1.496]
-070	35.31 [1.693]
-075	37.81 [1.791]

F

PROPRIETARY NOTE
THIS DOCUMENT CONTAINS CONFIDENTIAL AND PROPRIETARY INFORMATION AND ALL DESIGN, MANUFACTURING, REPRODUCTION, USE, PATENT RIGHTS AND SALES RIGHTS ARE EXPRESSLY RESERVED BY SAMTEC, INC. THIS DOCUMENT SHALL NOT BE DISCLOSED, IN WHOLE OR PART, TO ANY UNAUTHORIZED PERSON OR ENTITY NOR REPRODUCED, TRANSFERRED OR INCORPORATED IN ANY OTHER PROJECT IN ANY MANNER WITHOUT THE EXPRESS WRITTEN CONSENT OF SAMTEC, INC.

samtec

520 PARK EAST BLVD, NEW ALBANY, IN 47150
PHONE: 812-944-6733 FAX: 812-948-5047
e-Mail: info@SAMTEC.com code: 55322