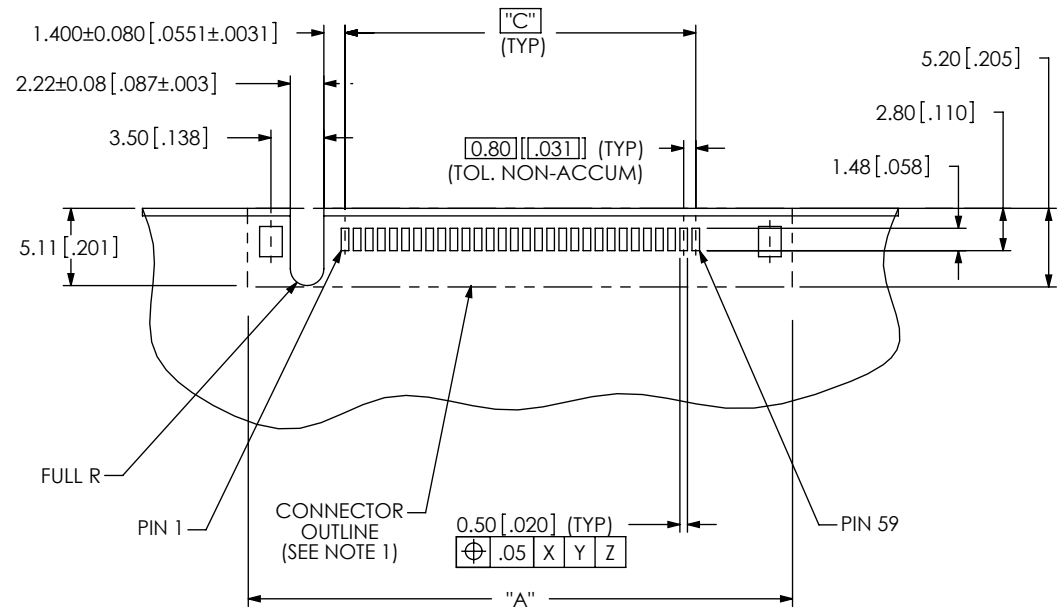
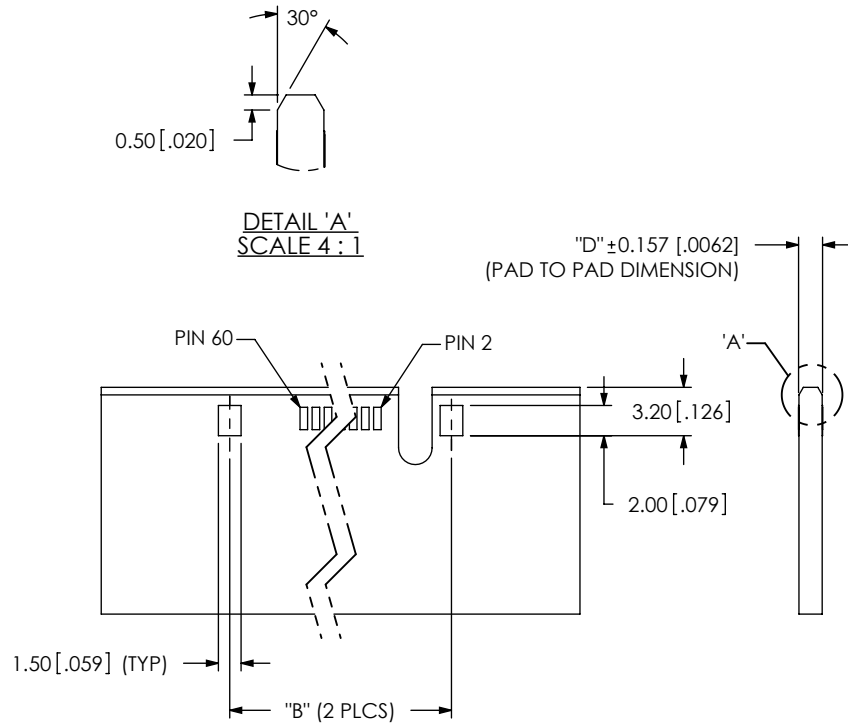


DESIGNED & DIMENSIONED IN MILLIMETERS [INCHES]



-30 POSITION SHOWN

TABLE 1

POSITION	"A"		"B"		"C"	
-005	16.00	[.630]	13.00	[.512]	3.20	[.126]
-010	20.00	[.787]	17.00	[.669]	7.20	[.283]
-013	22.40	[.882]	19.40	[.764]	9.60	[.378]
-020	28.00	[1.102]	25.00	[.984]	15.20	[.598]
-025	32.00	[1.260]	29.00	[1.142]	19.20	[.756]
-030	36.00	[1.417]	33.00	[1.299]	23.20	[.913]
-037	41.60	[1.638]	38.60	[1.520]	28.80	[1.134]
-040	44.00	[1.732]	41.00	[1.614]	31.20	[1.228]
-049	51.20	[2.016]	48.20	[1.898]	38.40	[1.512]
-050	52.00	[2.047]	49.00	[1.929]	39.20	[1.543]
-060	60.00	[2.362]	57.00	[2.244]	47.20	[1.858]
-070	68.00	[2.677]	65.00	[2.559]	55.20	[2.173]
-075	72.00	[2.835]	69.00	[2.717]	59.20	[2.331]

TABLE 2

TAIL OPTION	"D"
-EM2	1.588 [.0625]
*-EM3	2.380 [.0930]
-EM4	1.000 [.0394]

(* = NOT TOOLED)

NOTES:

1. CONNECTOR ENVELOPE DIMENSIONS:
OTHER COMPONENTS PLACED ON PCB SHALL AVOID THIS ZONE.
2. ALL DIMENSIONS ARE SYMMETRIC ABOUT THE CENTERLINE.

UNLESS OTHERWISE SPECIFIED,
DIMENSIONS ARE IN MILLIMETERS.
TOLERANCES ARE:

DECIMALS
 .X: $\pm .3[.01]$
 .XX: $\pm .10[.004]$
 .XXX: $\pm .05[.0020]$

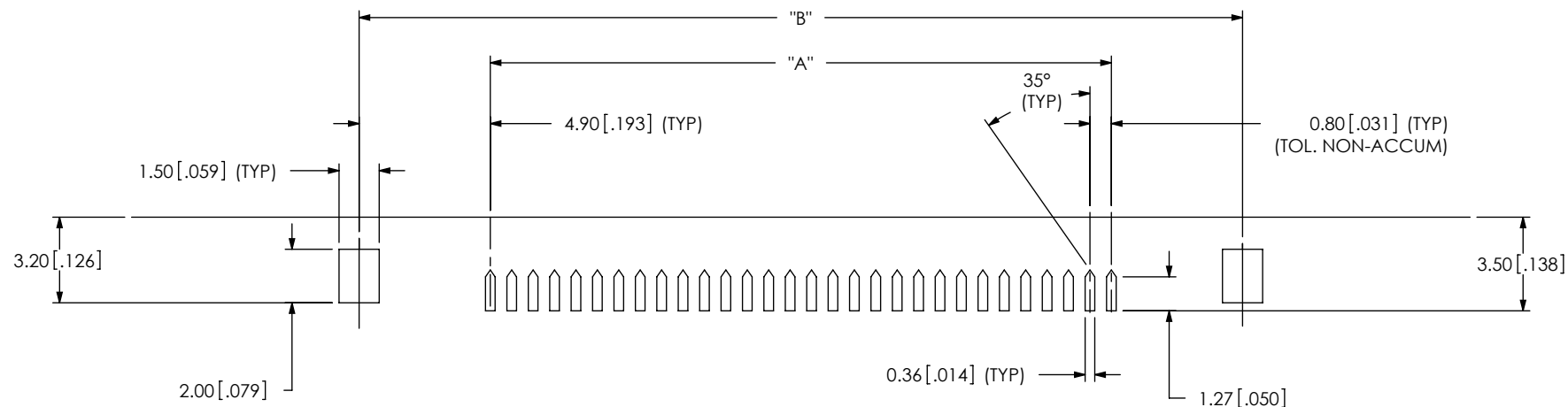
PROPRIETARY NOTE

THIS DOCUMENT CONTAINS INFORMATION
CONFIDENTIAL AND PROPRIETARY TO
SAMTEC, INC. AND SHALL NOT BE REPRODUCED
OR TRANSFERRED TO OTHER DOCUMENTS OR
DISCLOSED TO OTHERS OR USED FOR ANY
PURPOSE OTHER THAN THAT WHICH IT WAS
OBTAINED WITHOUT THE EXPRESSED WRITTEN
CONSENT OF SAMTEC, INC.



520 PARK EAST BLVD, NEW ALBANY, IN 47150
PHONE: 812-944-6733 FAX: 812-948-5047
e-Mail: info@SAMTEC.com code: 55322

DESIGNED & DIMENSIONED IN MILLIMETERS [INCHES]



-30 POSITION SHOWN

TABLE 3

POSITION	"A"		"B"	
-005	3.20	[.126]	13.00	[.512]
-010	7.20	[.283]	17.00	[.669]
-013	9.60	[.378]	19.40	[.764]
-020	15.20	[.598]	25.00	[.984]
-025	19.20	[.756]	29.00	[1.142]
-030	23.20	[.913]	33.00	[1.299]
-037	28.80	[1.134]	38.60	[1.520]
-040	31.20	[1.228]	41.00	[1.614]
-049	38.40	[1.512]	48.20	[1.898]
-050	39.20	[1.543]	49.00	[1.929]
-060	47.20	[1.858]	57.00	[2.244]
-070	55.20	[2.173]	65.00	[2.559]
-075	59.20	[2.331]	69.00	[2.717]

- NOTES:
 1. MIRROR IMAGE FOOTPRINT ON OTHER SIDE OF PCB.
 2. STENCIL TO BE 0.15[.006] THICK.

PROPRIETARY NOTE

THIS DOCUMENT CONTAINS INFORMATION
 CONFIDENTIAL AND PROPRIETARY TO
 SAMTEC, INC. AND SHALL NOT BE REPRODUCED
 OR TRANSFERRED TO OTHER DOCUMENTS OR
 DISCLOSED TO OTHERS OR USED FOR ANY
 PURPOSE OTHER THAN THAT WHICH IT WAS
 OBTAINED WITHOUT THE EXPRESSED WRITTEN
 CONSENT OF SAMTEC, INC.

samtec

520 PARK EAST BLVD, NEW ALBANY, IN 47150
 PHONE: 812-944-6733 FAX: 812-948-5047
 e-Mail: info@SAMTEC.com code: 55322