

SIGNAL INTEGRITY
-1: UP TO 112 Gbps, PAM4 PER DIFFERENTIAL PAIR

CABLE AWG/OHM/PAIRS
-01: 3492 - 16 PAIRS (ThinAx)
*02: 34100 - 16 PAIRS (TwinAx)

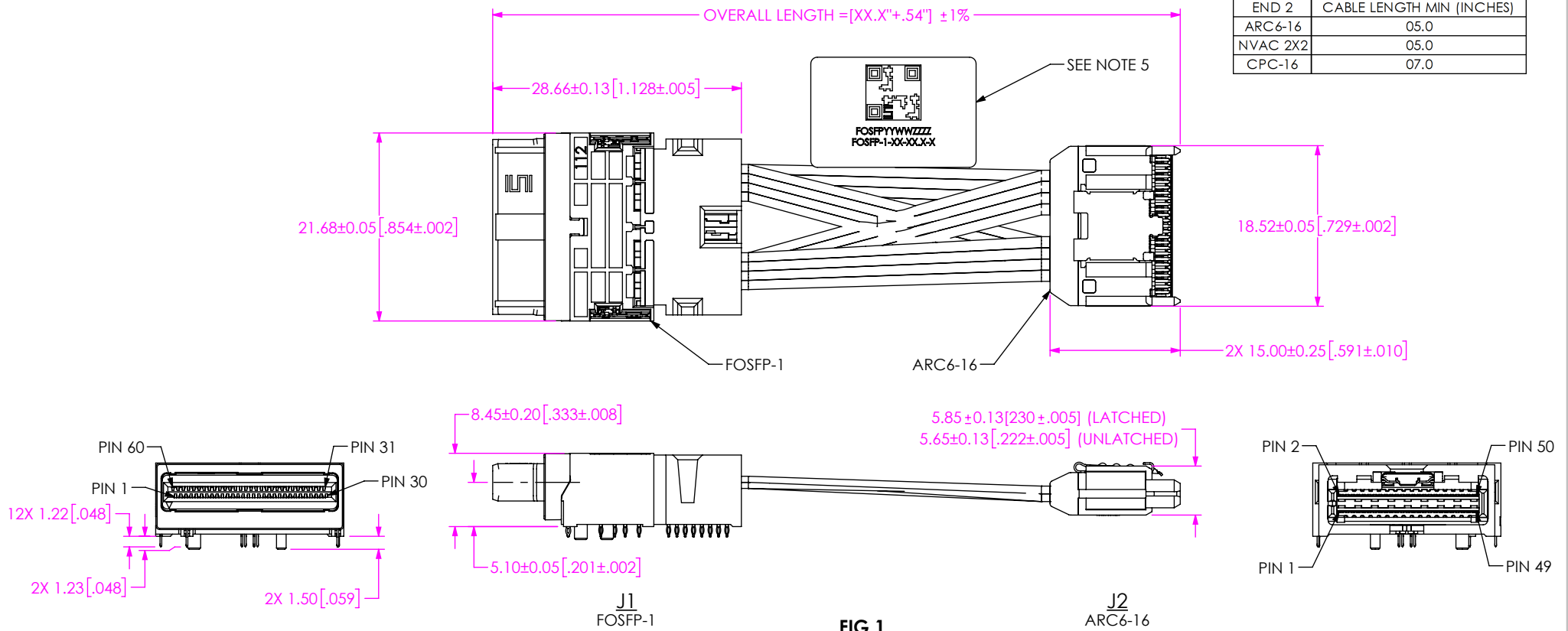
END 2
-1: QTY 1 ARC6-16
□ -2: QTY 1 NVAC 2x2
-3: QTY 1 CPC-16

CABLE LENGTH (INCHES)
-XX.X (SEE TABLE 1 FOR MIN)

(* = NOT TOOLED)
(□ = EXISTING CUSTOMERS ONLY)

TABLE 1	
END 2	CABLE LENGTH MIN (INCHES)
ARC6-16	05.0
NVAC 2X2	05.0
CPC-16	07.0

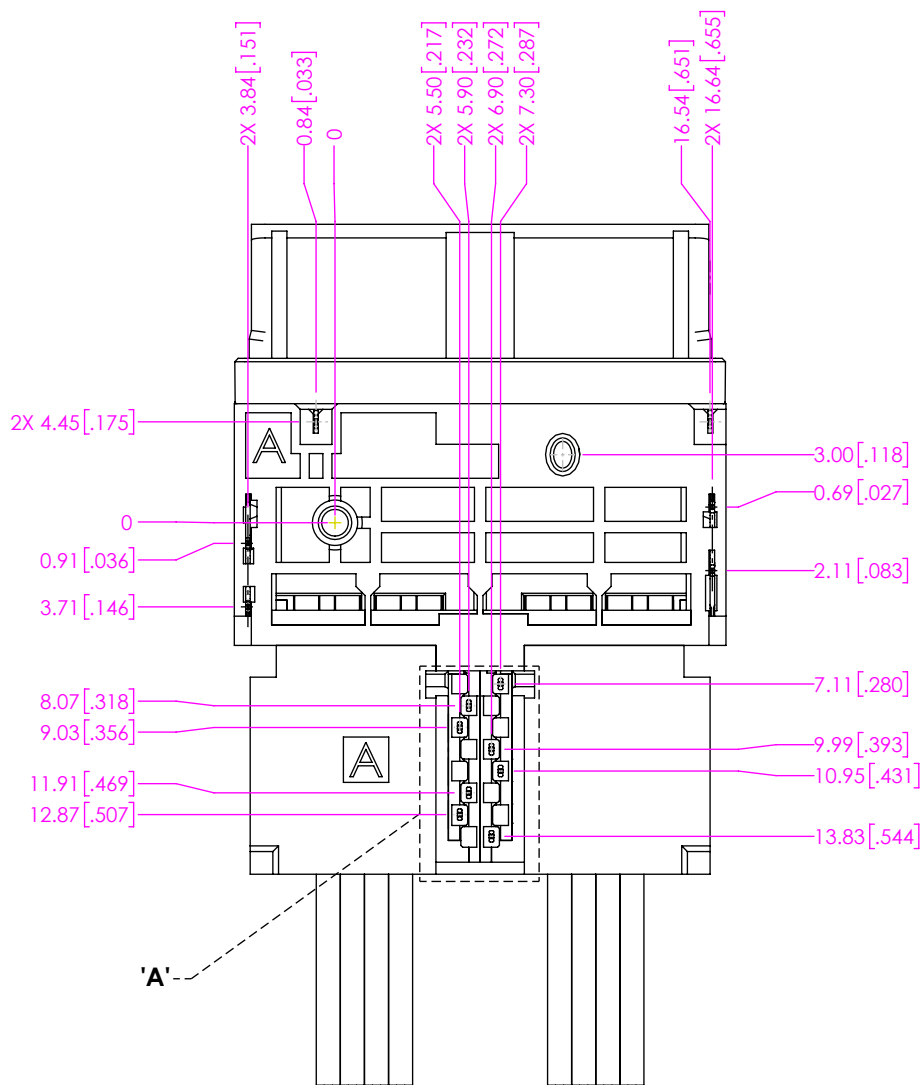
DO NOT SCALE FROM THIS PRINT



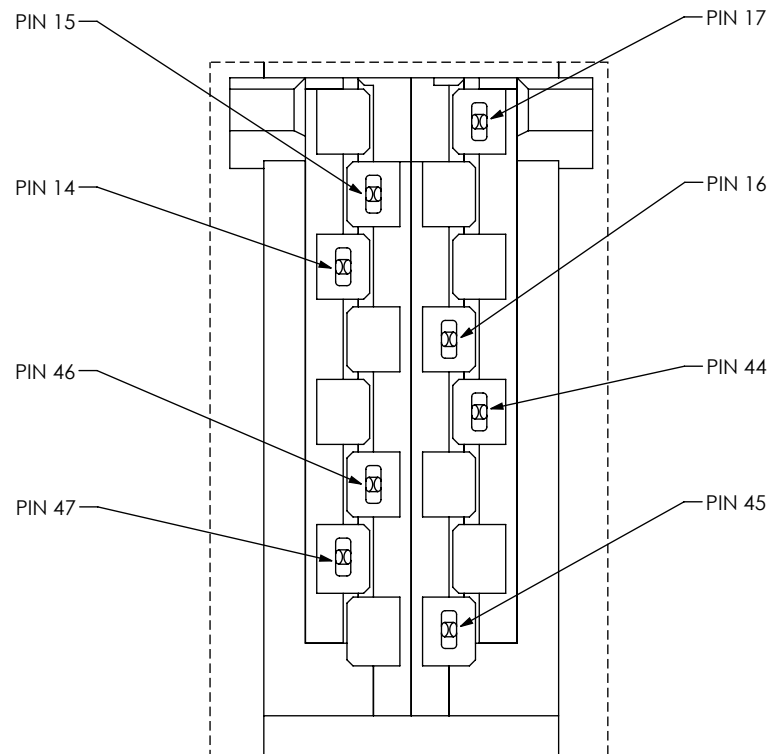
NOTES:

- REFER TO OSFP MSA FOR MATING OSFP TRANCEIVER EDGE CARD FOOTPRINT.
- REFER TO FOSFP-1-XX-XX.X-X-FOOTPRINT FOR END 1 FOOTPRINT.
- REFER TO OSFPC-X-X-X-F FOR FOSFP-1 CAGE.
- REFER TO HS-OSFP-1-X FOR FOSFP-1 HEAT SINK.
- LABEL TO BE CENTERED ON CABLE AS SHOWN.
LABEL TO CONTAIN:
QR CODE: INCLUDING IN ONE LINE: FOSFPYYWWZZZ
WHERE YY = YEAR; WW = WEEK; ZZZZ = UNIQUE IDENTIFIER
LINE 1 - SERIAL NUMBER: "FOSFPYYWWZZZ"
LINE 2 - PART NUMBER: "FOSFP-1-XX-XX.X-X"
- FOSFP-1 END PACKAGED IN PROTECTIVE CAP. FOR DETAILS, SEE CAP VIEW FOR J1 END.
- ALL ASSEMBLIES TO BE 100% HI-POT TESTED AT 300V.
- ALL ASSEMBLIES TO BE 100% ELECTRICALLY TESTED FOR SHORTS AND OPENS.
- REFER TO FOSFP-1-XX-XX.X-X-FOOTPRINT DRAWING FOR PCB THICKNESS REQUIREMENTS.
- BELLY-TO-BELLY PANEL CUT-OUT DIMENSIONS ARE BASED OFF OF A PCB THICKNESS OF 2.10mm.
- RAISED DIMENSION IS BASED OFF THE NOMINAL HEIGHT OF A MODULE FROM THE MSA.

<p>PROPRIETARY NOTE</p> <p>THIS DOCUMENT CONTAINS CONFIDENTIAL AND PROPRIETARY INFORMATION AND ALL DESIGN, MANUFACTURING, REPRODUCTION, USE, PATENT RIGHTS AND SALES RIGHTS ARE EXPRESSLY RESERVED BY SAMTEC, INC. THIS DOCUMENT SHALL NOT BE DISCLOSED, IN WHOLE OR PART, TO ANY UNAUTHORIZED PERSON OR ENTITY NOR REPRODUCED, TRANSFERRED OR INCORPORATED IN ANY OTHER PROJECT IN ANY MANNER WITHOUT THE EXPRESS WRITTEN CONSENT OF SAMTEC, INC.</p>	<p>520 PARK EAST BLVD, NEW ALBANY, IN 47150 PHONE: 812-944-6733 FAX: 812-948-5047 e-Mail: info@SAMTEC.com code 53322</p>	
	<p>SHEET SCALE: 1:1</p> <p>DO NOT SCALE DRAWING</p>	<p>DESCRIPTION: FOSFP ASSEMBLY</p> <p>DWG. NO. FOSFP-1-XX-XX.X-X</p>



BOTTOM VIEW



DETAIL 'A'
SCALE 10:1

<p>PROPRIETARY NOTE * THIS DOCUMENT CONTAINS CONFIDENTIAL AND PROPRIETARY INFORMATION AND ALL DESIGN, MANUFACTURING, REPRODUCTION, USE, PATENT RIGHTS AND SALES RIGHTS ARE EXPRESSLY RESERVED BY SAMTEC, INC. THIS DOCUMENT SHALL NOT BE DISCLOSED, IN WHOLE OR PART, TO ANY UNAUTHORIZED PERSON OR ENTITY NOR REPRODUCED, TRANSFERRED OR INCORPORATED IN ANY OTHER PROJECT IN ANY MANNER WITHOUT THE EXPRESS WRITTEN CONSENT OF SAMTEC, INC.</p>	<p>samtec 520 PARK EAST BLVD., NEW ALBANY, IN 47150 PHONE: 812-944-6733 FAX: 812-948-5047 e-Mail info@SAMTEC.com code 55322</p>
<p>SHEET SCALE: 2:1 DO NOT SCALE DRAWING</p>	<p>DESCRIPTION: FOSFP ASSEMBLY</p>
<p>F:\dwg\misc\mktg\FOSFP-1-XX-XX.X-MKT.SLDDRW</p>	<p>DWG. NO. FOSFP-1-XX-XX.X-X BY: KNOWLDEN 9/27/2023 SHEET 2 OF 10</p>

TABLE 2					
SIGNAL MAPPING TO ARC6 (END OPTION -1)					
J1	NAME	J2	J1	NAME	J2
1	GND 1	49	31	GND 2	2
2	TX2P	47	32	RX2P	4
3	TX2N	45	33	RX2N	6
4	GND 1	43	34	GND 2	8
5	TX4P	41	35	RX4P	10
6	TX4N	39	36	RX4N	12
7	GND 1	37	37	GND 2	14
8	TX6P	35	38	RX6P	16
9	TX6N	33	39	RX6N	18
10	GND 1	31	40	GND 2	20
11	TX8P	29	41	RX8P	22
12	TX8N	27	42	RX8N	24
13	GND 1		43	GND 2	
14	SCL	NC	44	INT/RSTn	NC
15	VCC	NC	45	VCC	NC
16	VCC	NC	46	VCC	NC
17	LPWn/PRSn	NC	47	SDA	NC
18	GND 2		48	GND 1	
19	RX7N	48	49	TX7N	3
20	RX7P	46	50	TX7P	5
21	GND 2	44	51	GND 1	7
22	RX5N	42	52	TX5N	9
23	RX5P	40	53	TX5P	11
24	GND 2	38	54	GND 1	13
25	RX3N	36	55	TX3N	15
26	RX3P	34	56	TX3P	17
27	GND 2	32	57	GND 1	19
28	RX1N	30	58	TX1N	21
29	RX1P	28	59	TX1P	23
30	GND 2	1	60	GND 1	50
ALL LIKE NAMED GROUNDS ARE COMMON AND TIED TO CABLE SHIELD.					
ALL NC NETS DO NOT TRANSMIT THROUGH CABLE, THEY WILL ROUTE THROUGH CUSTOMER PCB.					
ON THE MATING BOARD ASSEMBLY, SAMTEC RECOMMENDS IMPLEMENTING A GND REFERENCE TYING ALL GND'S TOGETHER.					

PROPRIETARY NOTE
 * THIS DOCUMENT CONTAINS CONFIDENTIAL AND PROPRIETARY INFORMATION AND ALL DESIGN, MANUFACTURING, REPRODUCTION, USE, PATENT RIGHTS AND SALES RIGHTS ARE EXPRESSLY RESERVED BY SAMTEC, INC. THIS DOCUMENT SHALL NOT BE DISCLOSED, IN WHOLE OR PART, TO ANY UNAUTHORIZED PERSON OR ENTITY NOR REPRODUCED, TRANSFERRED OR INCORPORATED IN ANY OTHER PROJECT IN ANY MANNER WITHOUT THE EXPRESS WRITTEN CONSENT OF SAMTEC, INC.



520 PARK EAST BLVD., NEW ALBANY, IN 47150
 PHONE: 812-944-6733 FAX: 812-948-5047
 e-Mail info@SAMTEC.com code 55322

SHEET SCALE: 1:1
 DO NOT SCALE DRAWING

DESCRIPTION: FOSFP ASSEMBLY
 DWG. NO. FOSFP-1-XX-XX.X-X
 BY: KNOWLDEN 9/27/2023 SHEET 3 OF 10

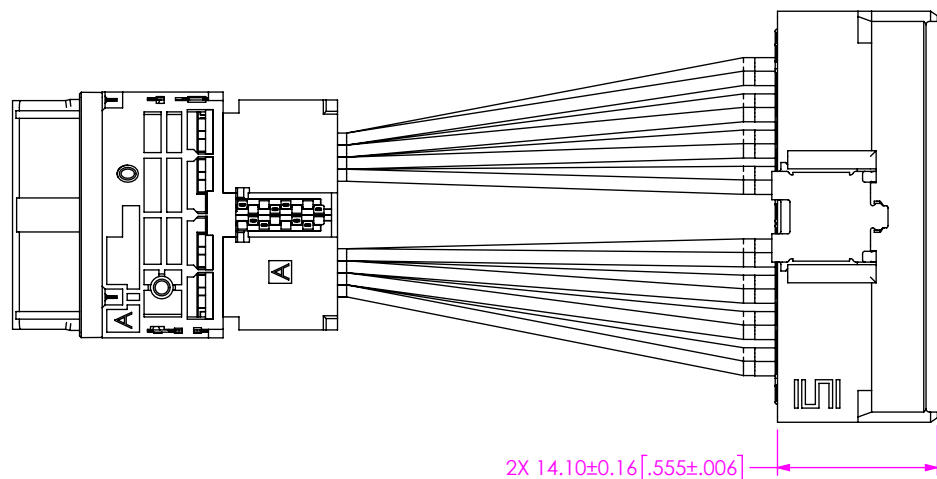
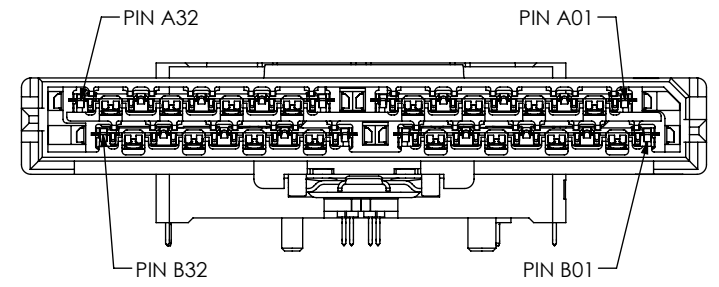
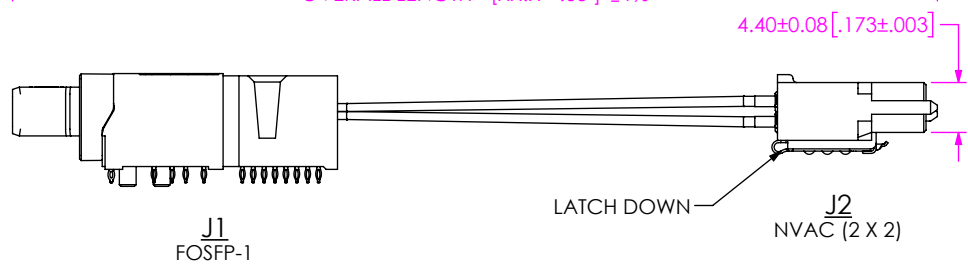
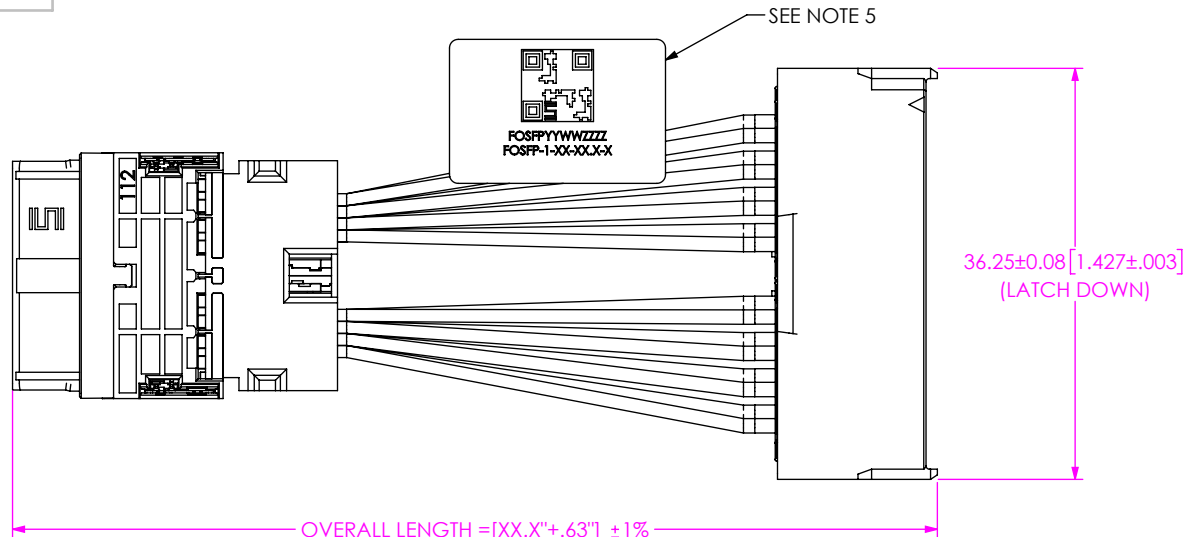


FIG 2
FOSFP-1-XX-XX.X-2 SHOWN

<p>PROPRIETARY NOTE</p> <p>THIS DOCUMENT CONTAINS CONFIDENTIAL AND PROPRIETARY INFORMATION AND ALL DESIGN, MANUFACTURING, REPRODUCTION, USE, PATENT RIGHTS AND SALES RIGHTS ARE EXPRESSLY RESERVED BY SAMTEC, INC. THIS DOCUMENT SHALL NOT BE DISCLOSED, IN WHOLE OR PART, TO ANY UNAUTHORIZED PERSON OR ENTITY NOR REPRODUCED, TRANSFERRED OR INCORPORATED IN ANY OTHER PROJECT IN ANY MANNER WITHOUT THE EXPRESS WRITTEN CONSENT OF SAMTEC, INC.</p>	<p>samtec</p> <p>520 PARK EAST BLVD, NEW ALBANY, IN 47150 PHONE: 812-944-6733 FAX: 812-948-5047 e-Mail info@SAMTEC.com code 55322</p>	
	<p>DESCRIPTION: FOSFP ASSEMBLY</p>	
	<p>DWG. NO. FOSFP-1-XX-XX.X-X</p>	
<p>SHEET SCALE: 2:1 DO NOT SCALE DRAWING</p>		<p>BY: KNOWLDEN 9/27/2023 SHEET 4 OF 10</p>

TABLE 3					
SIGNAL MAPPING TO NVAC (END OPTION -2)					
J1	NAME	J2	J1	NAME	J2
1	GND1	GND	31	GND2	GND
2	TX2P	B02	32	RX2P	A31
3	TX2N	B03	33	RX2N	A30
4	GND1	GND	34	GND2	GND
5	TX4P	B06	35	RX4P	A27
6	TX4N	B7	36	RX4N	A26
7	GND1	GND	37	GND2	GND
8	TX6P	B10	38	RX6P	A23
9	TX6N	B11	39	RX6N	A22
10	GND1	GND	40	GND2	GND
11	TX8P	B14	41	RX8P	A19
12	TX8N	B15	42	RX8N	A18
13	GND1	GND	43	GND2	GND
14	SCL	NC	44	INT/RSTn	NC
15	VCC	NC	45	VCC	NC
16	VCC	NC	46	VCC	NC
17	LPWn/PRSn	NC	47	SDA	NC
18	GND2	GND	48	GND1	GND
19	RX7N	B18	49	TX7N	A15
20	RX7P	B19	50	TX7P	A14
21	GND2	GND	51	GND1	GND
22	RX5N	B22	52	TX5N	A11
23	RX5P	B23	53	TX5P	A10
24	GND2	GND	54	GND1	GND
25	RX3N	B26	55	TX3N	A07
26	RX3P	B27	56	TX3P	A06
27	GND2	GND	57	GND1	GND
28	RX1N	B30	58	TX1N	A03
29	RX1P	B31	59	TX1P	A02
30	GND2	GND	60	GND1	GND
ALL LIKE NAMED GROUNDS ARE COMMON AND TIED TO CABLE SHIELD.					
ALL NC NETS DO NOT TRANSMIT THROUGH CABLE, THEY WILL ROUTE THROUGH CUSTOMER PCB.					
ON THE MATING BOARD ASSEMBLY, SAMTEC RECOMMENDS IMPLEMENTING A GND REFERENCE TYING ALL GND'S TOGETHER.					

PROPRIETARY NOTE
 * THIS DOCUMENT CONTAINS CONFIDENTIAL AND PROPRIETARY INFORMATION AND ALL DESIGN, MANUFACTURING, REPRODUCTION, USE, PATENT RIGHTS AND SALES RIGHTS ARE EXPRESSLY RESERVED BY SAMTEC, INC. THIS DOCUMENT SHALL NOT BE DISCLOSED, IN WHOLE OR PART, TO ANY UNAUTHORIZED PERSON OR ENTITY NOR REPRODUCED, TRANSFERRED OR INCORPORATED IN ANY OTHER PROJECT IN ANY MANNER WITHOUT THE EXPRESS WRITTEN CONSENT OF SAMTEC, INC.



520 PARK EAST BLVD., NEW ALBANY, IN 47150
 PHONE: 812-944-6733 FAX: 812-948-5047
 e-Mail info@SAMTEC.com code 55322

SHEET SCALE: 2:1
 DO NOT SCALE DRAWING

DESCRIPTION: FOSFP ASSEMBLY
 DWG. NO. FOSFP-1-XX-XX.X-X
 BY: KNOWLDEN 9/27/2023 SHEET 5 OF 10

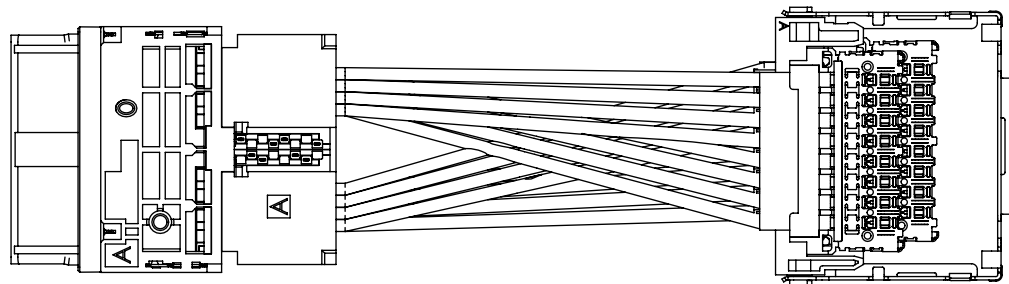
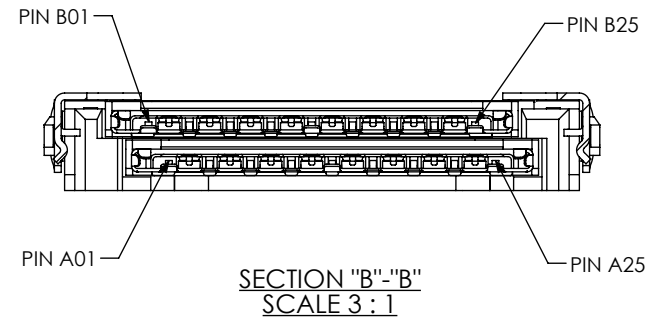
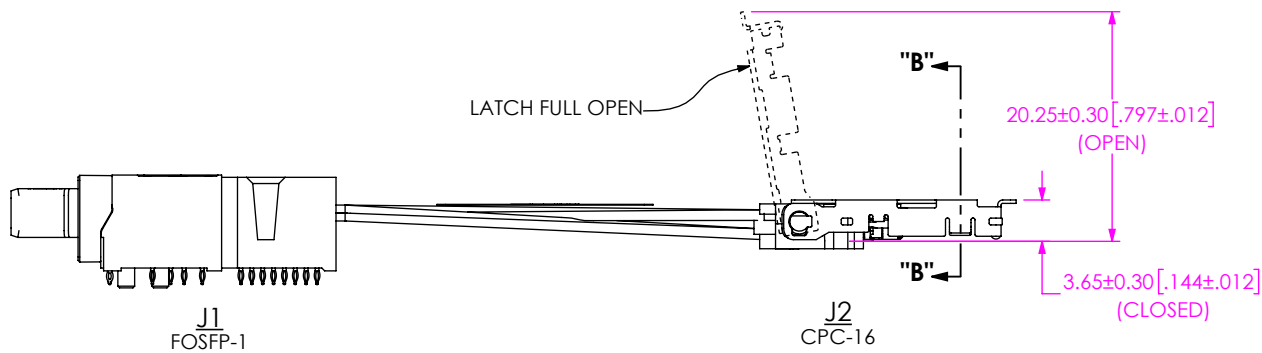
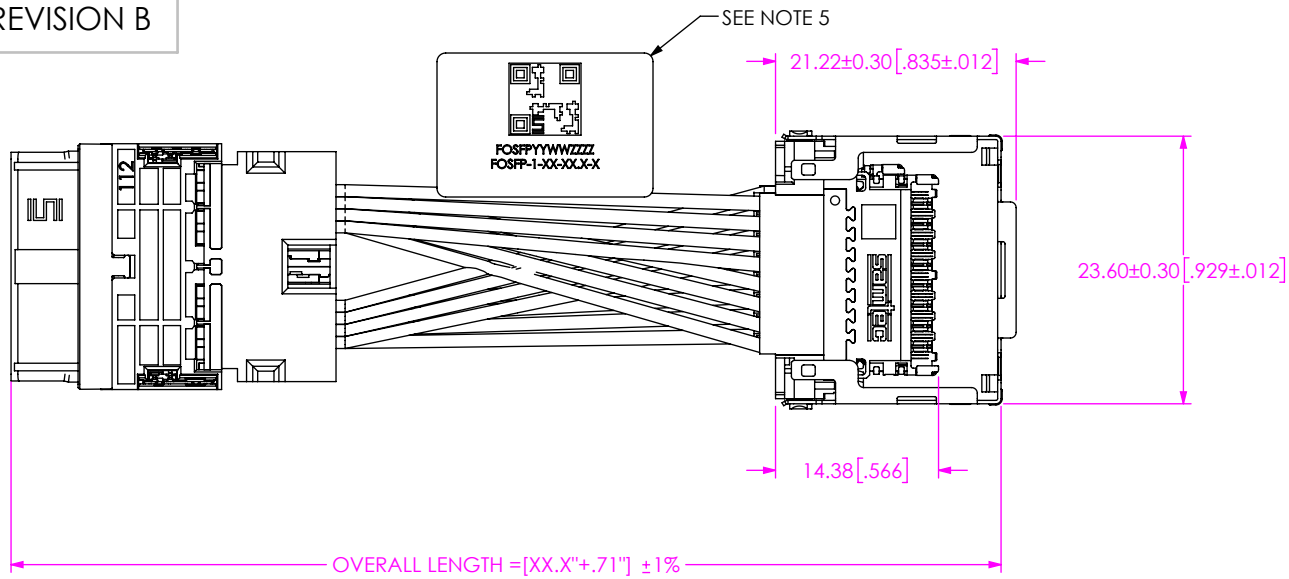


FIG 3
FOSFP-1-XX-XX.X-3 SHOWN


<p>* PROPRIETARY NOTE *</p> <p>THIS DOCUMENT CONTAINS CONFIDENTIAL AND PROPRIETARY INFORMATION AND ALL DESIGN, MANUFACTURING, REPRODUCTION, USE, PATENT RIGHTS AND SALES RIGHTS ARE EXPRESSLY RESERVED BY SAMTEC, INC. THIS DOCUMENT SHALL NOT BE DISCLOSED, IN WHOLE OR PART, TO ANY UNAUTHORIZED PERSON OR ENTITY NOR REPRODUCED, TRANSFERRED OR INCORPORATED IN ANY OTHER PROJECT IN ANY MANNER WITHOUT THE EXPRESS WRITTEN CONSENT OF SAMTEC, INC.</p>	 <p>520 PARK EAST BLVD., NEW ALBANY, IN 47150 PHONE: 812-944-6733 FAX: 812-948-5047 e-Mail info@SAMTEC.com code 55322</p>	
	<p>DESCRIPTION: FOSFP ASSEMBLY</p>	
	<p>DWG. NO. FOSFP-1-XX-XX.X-X</p>	
<p>SHEET SCALE: 2:1 DO NOT SCALE DRAWING</p>	<p>BY: KNOWLDEN 9/27/2023 SHEET 6 OF 10</p>	

TABLE 4					
SIGNAL MAPPING TO CPC (END OPTION -3)					
J1	NAME	J2	J1	NAME	J2
1	GND2	GND	31	GND1	GND
2	TX2P	B12	32	RX2P	A14
3	TX2N	B11	33	RX2N	A15
4	GND2	GND	34	GND1	GND
5	TX4P	B9	35	RX4P	A17
6	TX4N	B8	36	RX4N	A18
7	GND2	GND	37	GND1	GND
8	TX6P	B6	38	RX6P	A20
9	TX6N	B5	39	RX6N	A21
10	GND2	GND	40	GND1	GND
11	TX8P	B3	41	RX8P	A23
12	TX8N	B2	42	RX8N	A24
13	GND2	GND	43	GND1	GND
14	SCL	NC	44	INT/RSTn	NC
15	VCC	NC	45	VCC	NC
16	VCC	NC	46	VCC	NC
17	LPWn/PRSn	NC	47	SDA	NC
18	GND1	GND	48	GND2	GND
19	RX7N	A12	49	TX7N	B14
20	RX7P	A11	50	TX7P	B15
21	GND1	GND	51	GND2	GND
22	RX5N	A9	52	TX5N	B17
23	RX5P	A8	53	TX5P	B18
24	GND1	GND	54	GND2	GND
25	RX3N	A6	55	TX3N	B20
26	RX3P	A5	56	TX3P	B21
27	GND1	GND	57	GND2	GND
28	RX1N	A3	58	TX1N	B23
29	RX1P	A2	59	TX1P	B24
30	GND1	GND	60	GND2	GND
ALL LIKE NAMED GROUNDS ARE COMMON AND TIED TO CABLE SHIELD.					
ALL NC NETS DO NOT TRANSMIT THROUGH CABLE, THEY WILL ROUTE THROUGH CUSTOMER PCB.					
ON THE MATING BOARD ASSEMBLY, SAMTEC RECOMMENDS IMPLEMENTING A GND REFERENCE TYING ALL GND'S TOGETHER.					

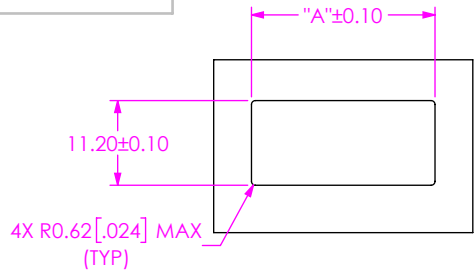
PROPRIETARY NOTE
 * THIS DOCUMENT CONTAINS CONFIDENTIAL AND PROPRIETARY INFORMATION AND ALL DESIGN, MANUFACTURING, REPRODUCTION, USE, PATENT RIGHTS AND SALES RIGHTS ARE EXPRESSLY RESERVED BY SAMTEC, INC. THIS DOCUMENT SHALL NOT BE DISCLOSED, IN WHOLE OR PART, TO ANY UNAUTHORIZED PERSON OR ENTITY NOR REPRODUCED, TRANSFERRED OR INCORPORATED IN ANY OTHER PROJECT IN ANY MANNER WITHOUT THE EXPRESS WRITTEN CONSENT OF SAMTEC, INC. *



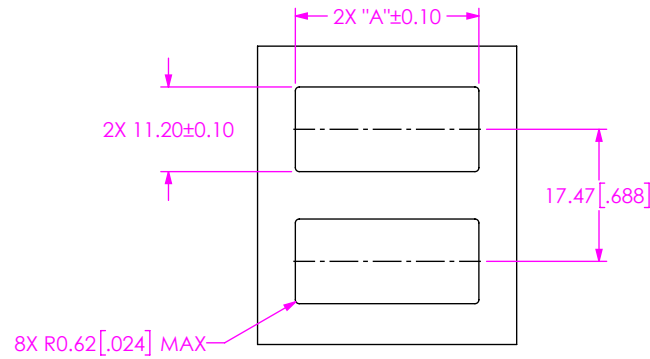
520 PARK EAST BLVD, NEW ALBANY, IN 47150
 PHONE: 812-944-6733 FAX: 812-948-5047
 e-Mail info@SAMTEC.com code 55322

SHEET SCALE: 2:1
 DO NOT SCALE DRAWING

DESCRIPTION: FOSFP ASSEMBLY
 DWG. NO. FOSFP-1-XX-XX.X-X
 BY: KNOWLDEN 9/27/2023 SHEET 7 OF 10



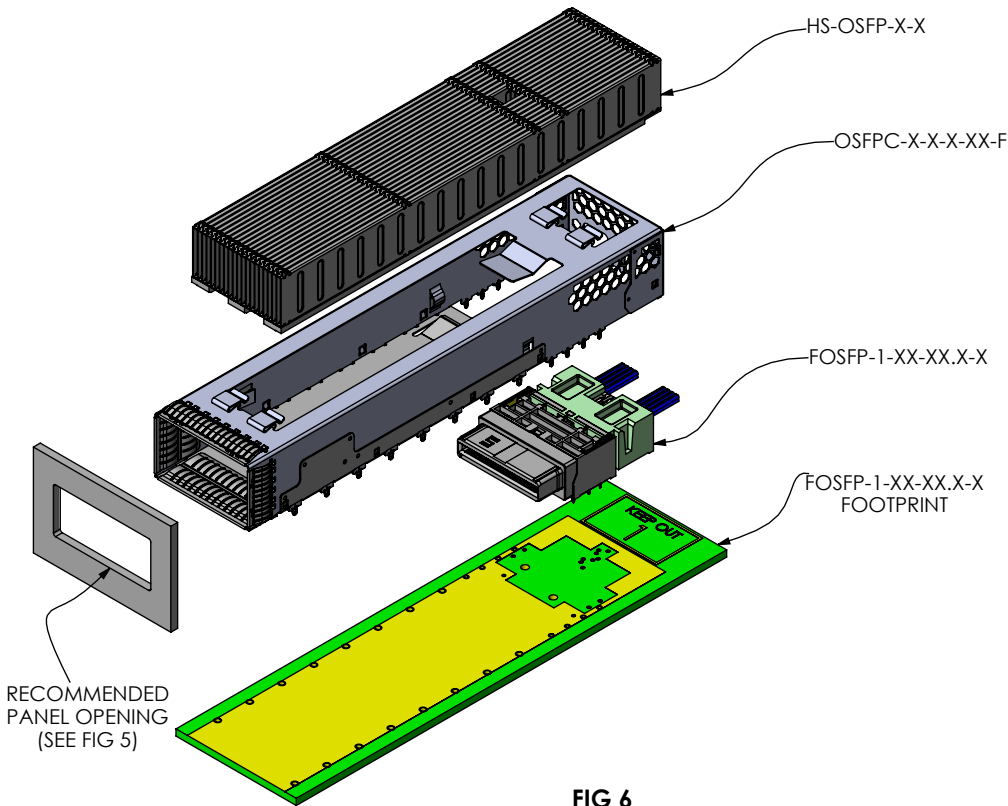
**SINGLE ROW PANEL CUT-OUT
1 x n SHOWN**



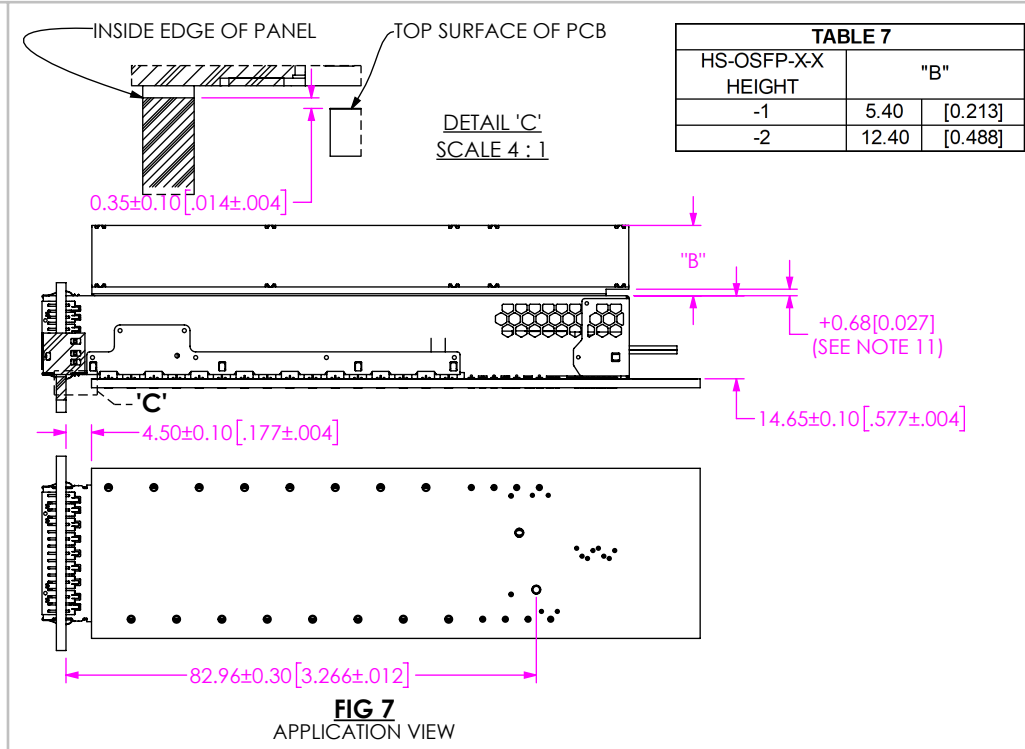
**SINGLE ROW PANEL CUT-OUT (BELLY-TO-BELLY)
1 x n SHOWN
(SEE NOTE 10)**

**FIG 5
RECOMMENDED PANEL OPENING
FOR OSFPC-X-X-X-XX-F**

STYLE	"A"	"A"
1 x 1	24.28	[0.956]
1 x 2	47.51	[1.870]
1 x 4	93.97	[3.700]
1 x 6	140.43	[5.529]



**FIG 6
EXPLODED VIEW**



**FIG 7
APPLICATION VIEW**

HS-OSFP-X-X HEIGHT	"B"	"B"
-1	5.40	[0.213]
-2	12.40	[0.488]

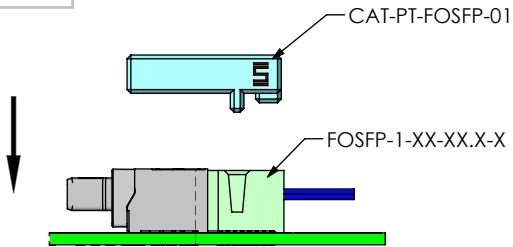
PROPRIETARY NOTE
THIS DOCUMENT CONTAINS CONFIDENTIAL AND PROPRIETARY INFORMATION AND ALL DESIGN, MANUFACTURING, REPRODUCTION, USE, PATENT RIGHTS AND SALES RIGHTS ARE EXPRESSLY RESERVED BY SAMTEC, INC. THIS DOCUMENT SHALL NOT BE DISCLOSED, IN WHOLE OR PART, TO ANY UNAUTHORIZED PERSON OR ENTITY NOR REPRODUCED, TRANSFERRED OR INCORPORATED IN ANY OTHER PROJECT IN ANY MANNER WITHOUT THE EXPRESS WRITTEN CONSENT OF SAMTEC, INC.



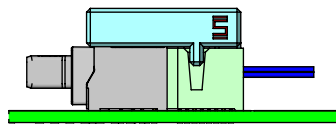
520 PARK EAST BLVD., NEW ALBANY, IN 47150
PHONE: 812-944-6733 FAX: 812-948-5047
e-Mail: info@SAMTEC.com code 55322

SHEET SCALE: 1:2
DO NOT SCALE DRAWING

DESCRIPTION:	FOSFP ASSEMBLY
DWG. NO.	FOSFP-1-XX-XX.X-X
BY: KNOWLDEN	9/27/2023 SHEET 8 OF 10

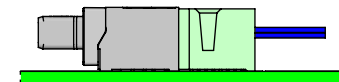


STEP 1
ALIGN CONNECTOR & TOOL

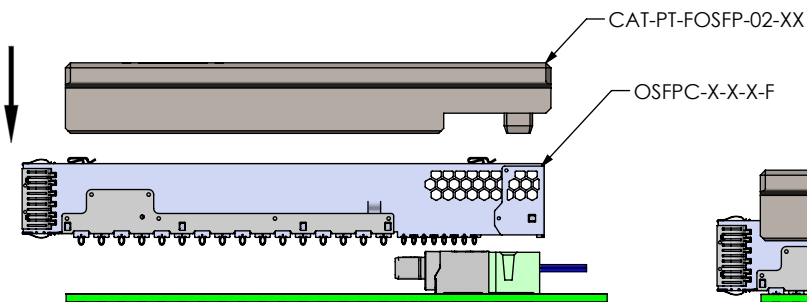


STEP 2
PRESS CONNECTOR ONTO PCB

FIG 8
CONNECTOR ASSEMBLY TO PCB



STEP 3
REMOVE TOOL

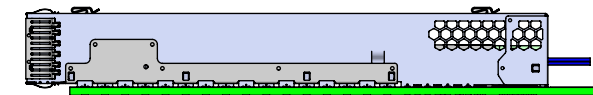


STEP 1
ALIGN CAGE & TOOL



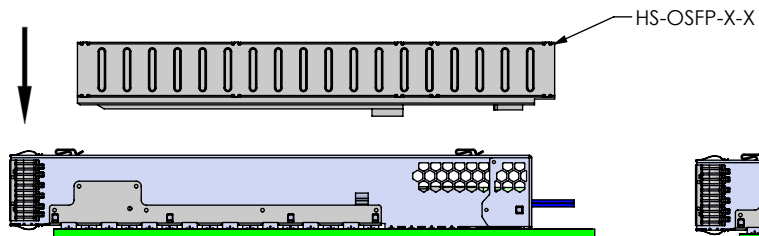
STEP 2
CAGE PRESS

FIG 9
CAGE ASSEMBLY TO PCB

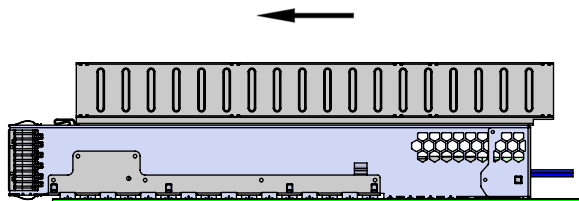


STEP 3
REMOVE TOOL

TABLE 6		
STYLE	OSFPC-X-X-X-F P/N	CAT-PT-FOSFP-02-XX P/N
1 x 1	OSFPC-1-1-S-F	CAT-PT-FOSFP-02-01
1 x 2	OSFPC-1-2-S-F	CAT-PT-FOSFP-02-02
1 x 4	OSFPC-1-4-S-F	CAT-PT-FOSFP-02-04
1 x 6	OSFPC-1-6-S-F	CAT-PT-FOSFP-02-06

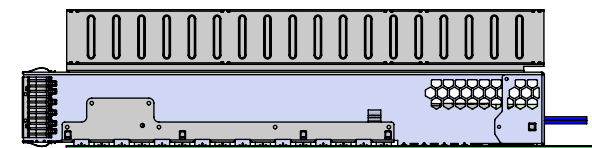


STEP 1
ALIGN & PRESS HEAT SINK TO CAGE



STEP 2
SLIDE HEAT SINK FORWARD

FIG 10
HEAT SINK ATTACH



STEP 3
LOCK HEAT SINK INTO PLACE

PROPRIETARY NOTE
THIS DOCUMENT CONTAINS CONFIDENTIAL AND PROPRIETARY INFORMATION AND ALL DESIGN, MANUFACTURING, REPRODUCTION, USE, PATENT RIGHTS AND SALES RIGHTS ARE EXPRESSLY RESERVED BY SAMTEC, INC. THIS DOCUMENT SHALL NOT BE DISCLOSED, IN WHOLE OR PART, TO ANY UNAUTHORIZED PERSON OR ENTITY NOR REPRODUCED, TRANSFERRED OR INCORPORATED IN ANY OTHER PROJECT IN ANY MANNER WITHOUT THE EXPRESS WRITTEN CONSENT OF SAMTEC, INC.

SHEET SCALE: 1:2
DO NOT SCALE DRAWING



520 PARK EAST BLVD, NEW ALBANY, IN 47150
PHONE: 812-944-6733 FAX: 812-948-5047
e-Mail info@SAMTEC.com code 55322

DESCRIPTION: FOSFP ASSEMBLY

DWG. NO. FOSFP-1-XX-XX.X-X

BY: KNOWLDEN 9/27/2023 SHEET 9 OF 10

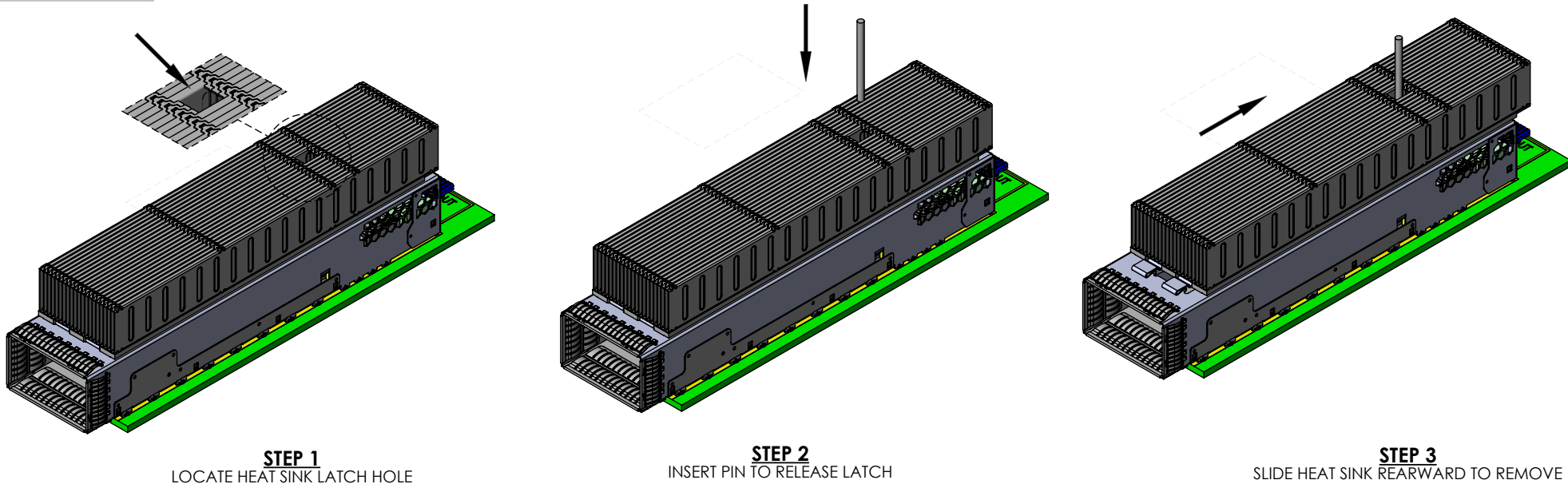


FIG 11
HEAT SINK REMOVAL

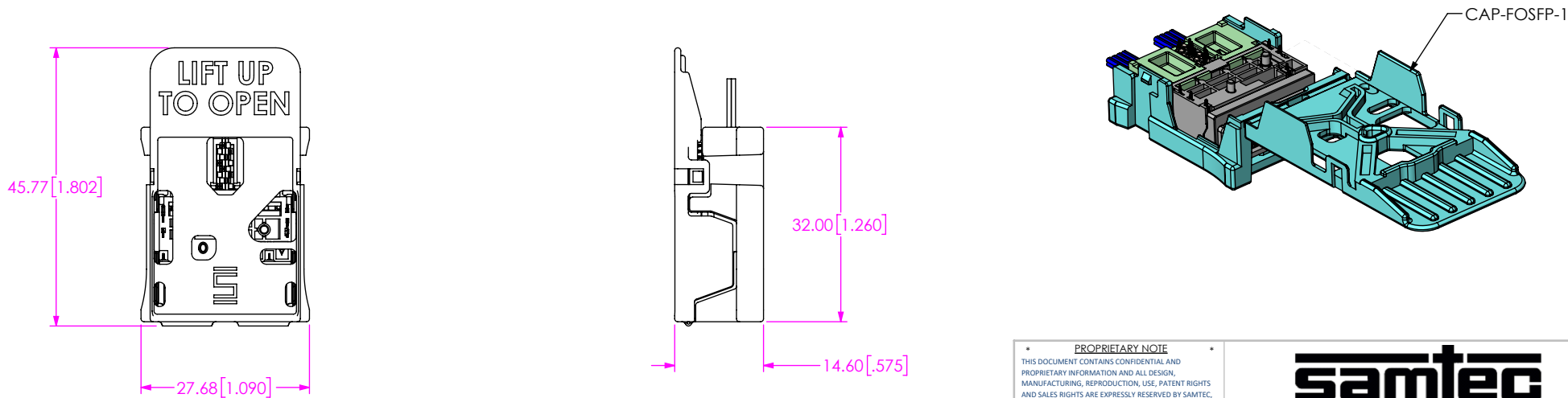


FIG 12
CAP VIEW FOR J1 END

<p>PROPRIETARY NOTE</p> <p>THIS DOCUMENT CONTAINS CONFIDENTIAL AND PROPRIETARY INFORMATION AND ALL DESIGN, MANUFACTURING, REPRODUCTION, USE, PATENT RIGHTS AND SALES RIGHTS ARE EXPRESSLY RESERVED BY SAMTEC, INC. THIS DOCUMENT SHALL NOT BE DISCLOSED, IN WHOLE OR PART, TO ANY UNAUTHORIZED PERSON OR ENTITY NOR REPRODUCED, TRANSFERRED OR INCORPORATED IN ANY OTHER PROJECT IN ANY MANNER WITHOUT THE EXPRESS WRITTEN CONSENT OF SAMTEC, INC.</p>	<p>samtec</p> <p>520 PARK EAST BLVD, NEW ALBANY, IN 47150 PHONE: 812-944-6733 FAX: 812-948-5047 e-Mail: info@SAMTEC.com code 55322</p>	
	<p>SHEET SCALE: 1:2 DO NOT SCALE DRAWING</p>	<p>DESCRIPTION: FOSFP ASSEMBLY</p>
	<p>DWG. NO. FOSFP-1-XX-XX.X-X</p>	<p>BY: KNOWLDEN 9/27/2023 SHEET 10 OF 10</p>