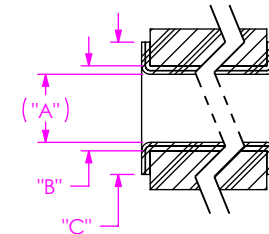
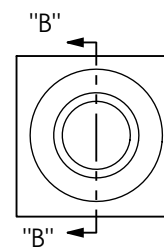


FIG 1  
FSFP-XX-XX.X-X SHOWN

	"A" (PTH)	"B" (DRILL HOLE)	"C" (PAD)
SIGNAL	PTH 0.36 [0.014]	0.45 [0.018]	0.70 [0.028]
CAGE	PTH 1.05 [0.041]	1.14 [0.045]	1.39 [0.055]
WELD TAB	PTH 0.46 [0.018]	0.55 [0.022]	0.80 [0.031]

$\mu\text{m}(\mu\text{in})$ PLATING	MIN	MAX
Sn	2.5 [98]	20.0 [787]
Cu	25.4 [1000]	63.5 [2500]



- NOTES:
- BELLY TO BELLY CONNECTORS NEED PCB THICKNESS OF AT LEAST 2.00MM  
DUE TO SAMTEC COMPONENTS. TRANCEIVERS MAY DICTATE A THICKER BELLY TO BELLY PCB.
  - TRACES AND COMPONENTS IN KEEP OUT AREA MUST BE UNDER 4.00MM TALL.

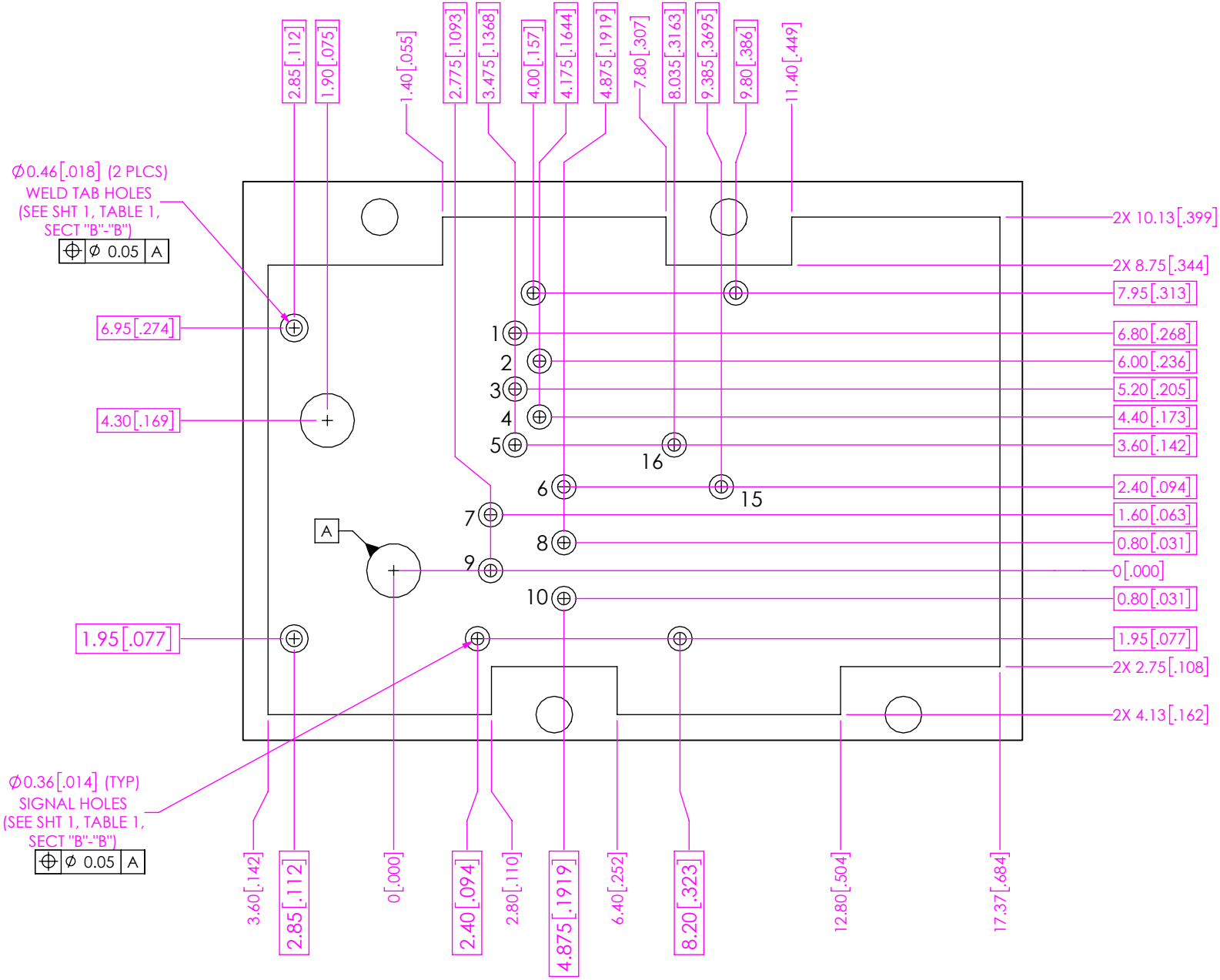
UNLESS OTHERWISE SPECIFIED,  
DIMENSIONS ARE IN MILLIMETERS.

TOLERANCES ARE:  
DECIMALS ANGLES  
X.X:  $\pm 0.3 [01]$  2°  
X.XX:  $\pm 0.05 [002]$   
X.XXX:  $\pm 0.025 [0010]$

PROPRIETARY NOTE  
THIS DOCUMENT CONTAINS CONFIDENTIAL AND PROPRIETARY INFORMATION AND ALL DESIGN, MANUFACTURING, REPRODUCTION, USE, PATENT RIGHTS AND SALES RIGHTS ARE EXPRESSLY RESERVED BY SAMTEC, INC. THIS DOCUMENT SHALL NOT BE DISCLOSED, IN WHOLE OR PART, TO ANY UNAUTHORIZED PERSON OR ENTITY NOR REPRODUCED, TRANSFERRED OR INCORPORATED IN ANY OTHER PROJECT IN ANY MANNER WITHOUT THE EXPRESS WRITTEN CONSENT OF SAMTEC, INC.



520 PARK EAST BLVD, NEW ALBANY, IN 47150  
PHONE: 812-944-6733 FAX: 812-948-5047  
e-Mail info@SAMTEC.com code 55322

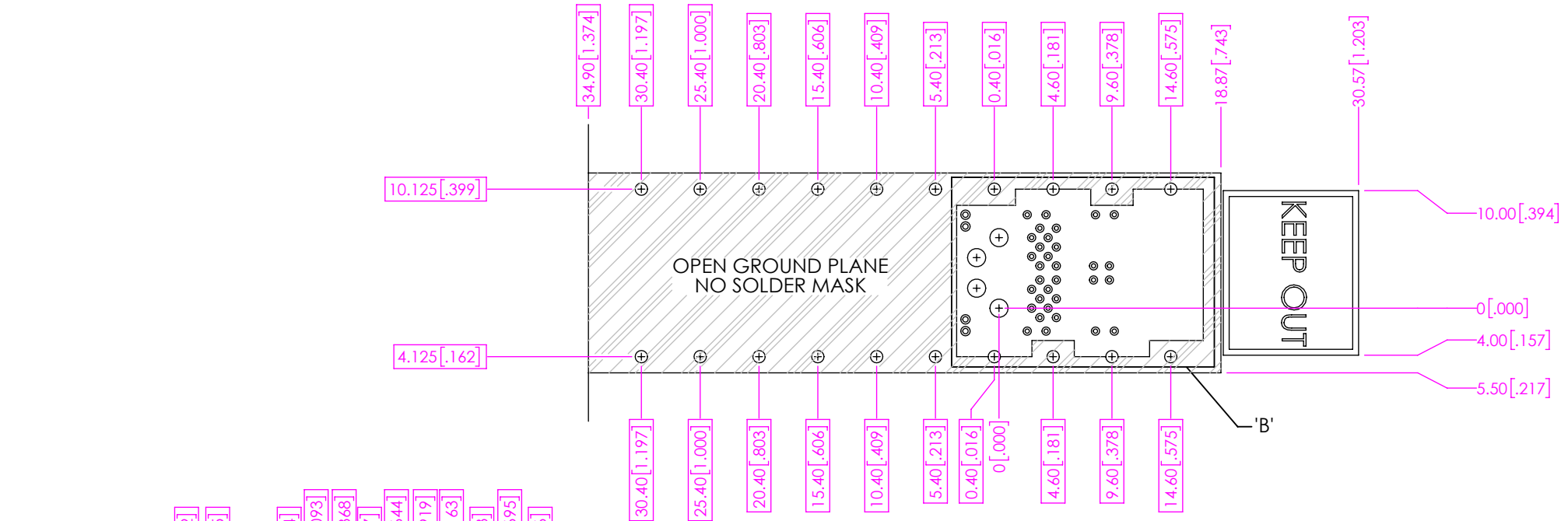


DETAIL 'A'  
 SCALE 6 : 1  
 LOW SPEED PIN NUMBERS SHOWN

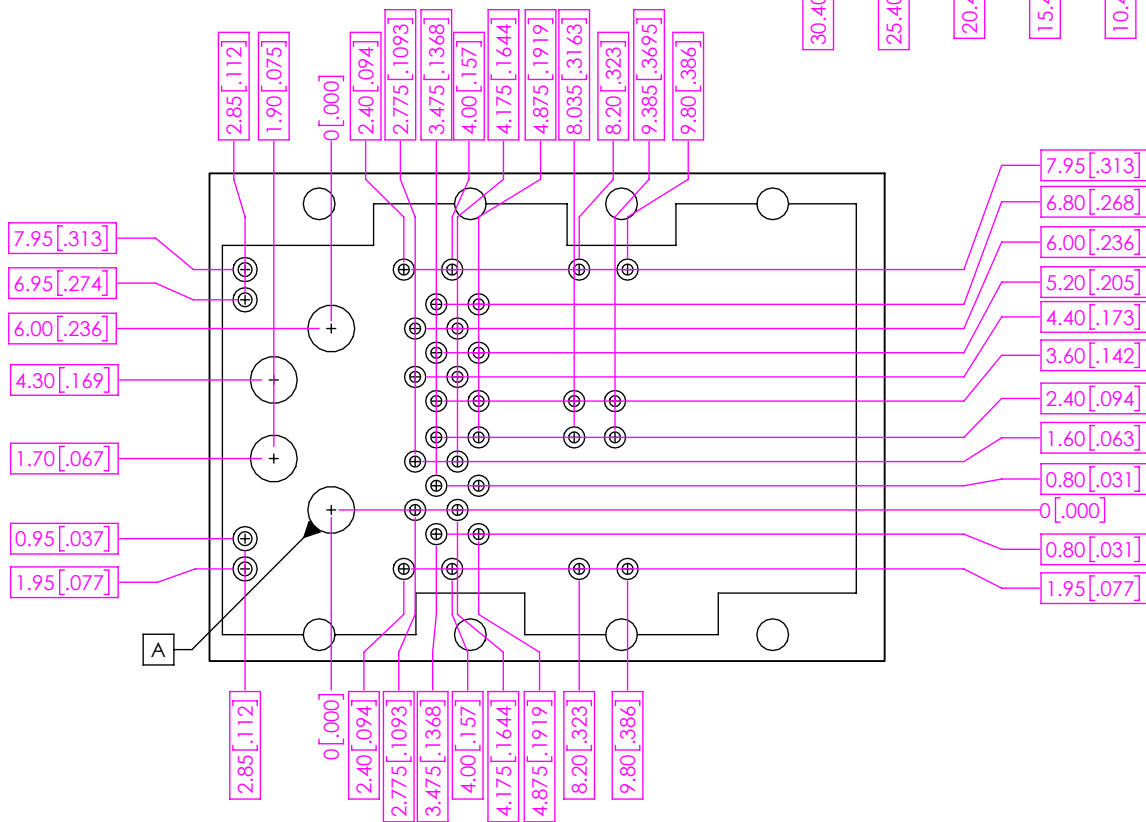
PROPRIETARY NOTE  
 THIS DOCUMENT CONTAINS CONFIDENTIAL AND PROPRIETARY INFORMATION AND ALL DESIGN, MANUFACTURING, REPRODUCTION, USE, PATENT RIGHTS AND SALES RIGHTS ARE EXPRESSLY RESERVED BY SAMTEC, INC. THIS DOCUMENT SHALL NOT BE DISCLOSED, IN WHOLE OR PART, TO ANY UNAUTHORIZED PERSON OR ENTITY NOR REPRODUCED, TRANSFERRED OR INCORPORATED IN ANY OTHER PROJECT IN ANY MANNER WITHOUT THE EXPRESS WRITTEN CONSENT OF SAMTEC, INC.

**samtec**  
 520 PARK EAST BLVD, NEW ALBANY, IN 47150  
 PHONE: 812-944-6733 FAX: 812-948-5047  
 e-Mail info@SAMTEC.com code 55322

# RECOMMENDED PCB LAYOUT FOR FSFP-XX-XX.X-X



**FIG 2**  
BELLY TO BELLY FOOTPRINT SHOWN  
(DIFFERENT AS SHOWN, OTHERWISE SAME AS FIG 1)

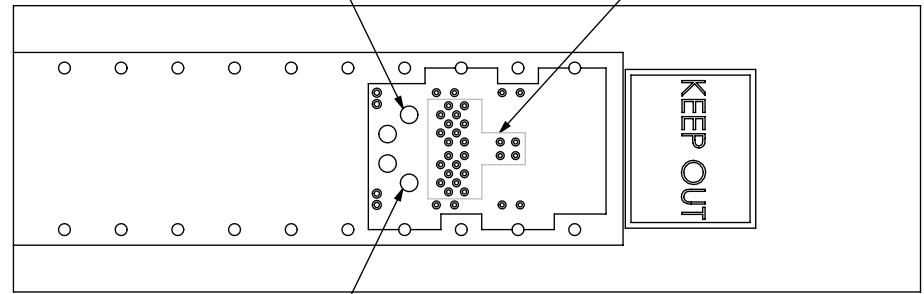


**DETAIL 'B'**  
**SCALE 4 : 1**  
BELLY TO BELLY FOOTPRINT SHOWN

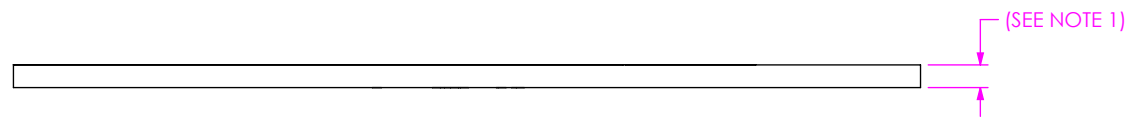
**PROPRIETARY NOTE**  
THIS DOCUMENT CONTAINS CONFIDENTIAL AND PROPRIETARY INFORMATION AND ALL DESIGN, MANUFACTURING, REPRODUCTION, USE, PATENT RIGHTS AND SALES RIGHTS ARE EXPRESSLY RESERVED BY SAMTEC, INC. THIS DOCUMENT SHALL NOT BE DISCLOSED, IN WHOLE OR PART, TO ANY UNAUTHORIZED PERSON OR ENTITY NOR REPRODUCED, TRANSFERRED OR INCORPORATED IN ANY OTHER PROJECT IN ANY MANNER WITHOUT THE EXPRESS WRITTEN CONSENT OF SAMTEC, INC.

**samtec**  
520 PARK EAST BLVD, NEW ALBANY, IN 47150  
PHONE: 812-944-6733 FAX: 812-948-5047  
e-Mail info@SAMTEC.com code 55322

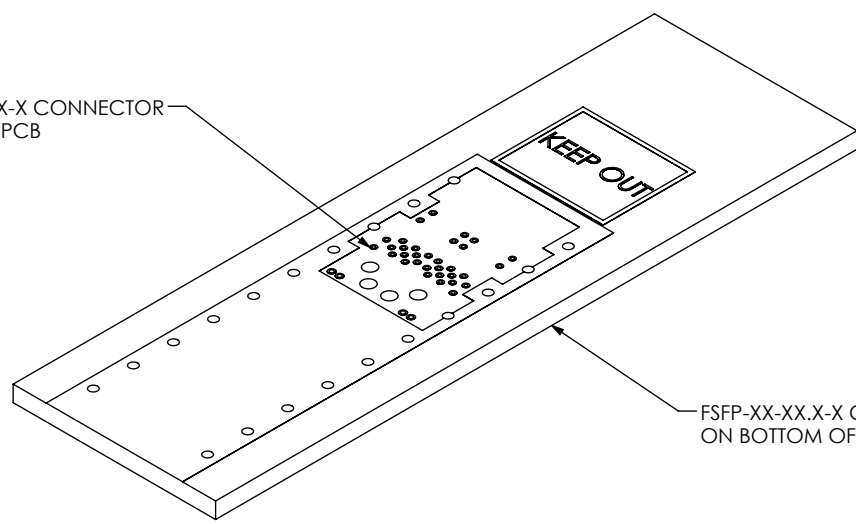
BOTTOM SIDE DATUM SEE DETAIL "A" — REFER TO DETAIL "A" FOR LOW SPEED LOCATIONS



TOP SIDE DATUM SEE DETAIL "A" —



FSFP-XX-XX.X-X CONNECTOR ON TOP OF PCB



FSFP-XX-XX.X-X CONNECTOR ON BOTTOM OF PCB

FIG 3  
BELLY TO BELLY FOOTPRINT SHOWN

**PROPRIETARY NOTE**  
 THIS DOCUMENT CONTAINS CONFIDENTIAL AND PROPRIETARY INFORMATION AND ALL DESIGN, MANUFACTURING, REPRODUCTION, USE, PATENT RIGHTS AND SALES RIGHTS ARE EXPRESSLY RESERVED BY SAMTEC, INC. THIS DOCUMENT SHALL NOT BE DISCLOSED, IN WHOLE OR PART, TO ANY UNAUTHORIZED PERSON OR ENTITY NOR REPRODUCED, TRANSFERRED OR INCORPORATED IN ANY OTHER PROJECT IN ANY MANNER WITHOUT THE EXPRESS WRITTEN CONSENT OF SAMTEC, INC.



520 PARK EAST BLVD, NEW ALBANY, IN 47150  
 PHONE: 812-944-6733 FAX: 812-948-5047  
 e-Mail info@SAMTEC.com code 55322

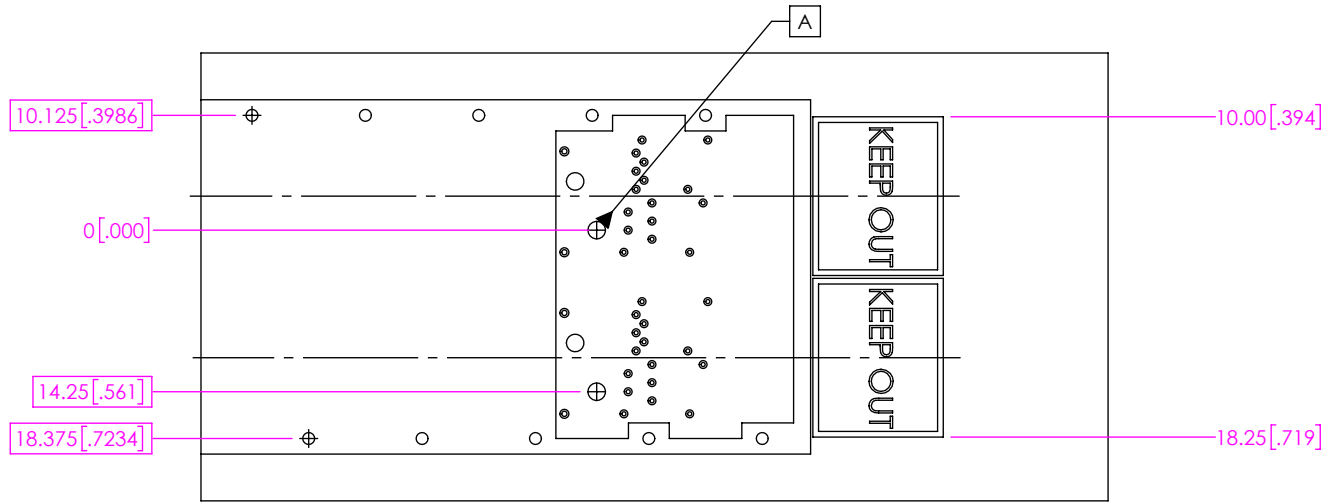


FIG 4  
2 PORT FSFP-XX-XX.X-X SHOWN  
(DIFFERENT AS SHOWN, OTHERWISE SAME AS FIG 1)

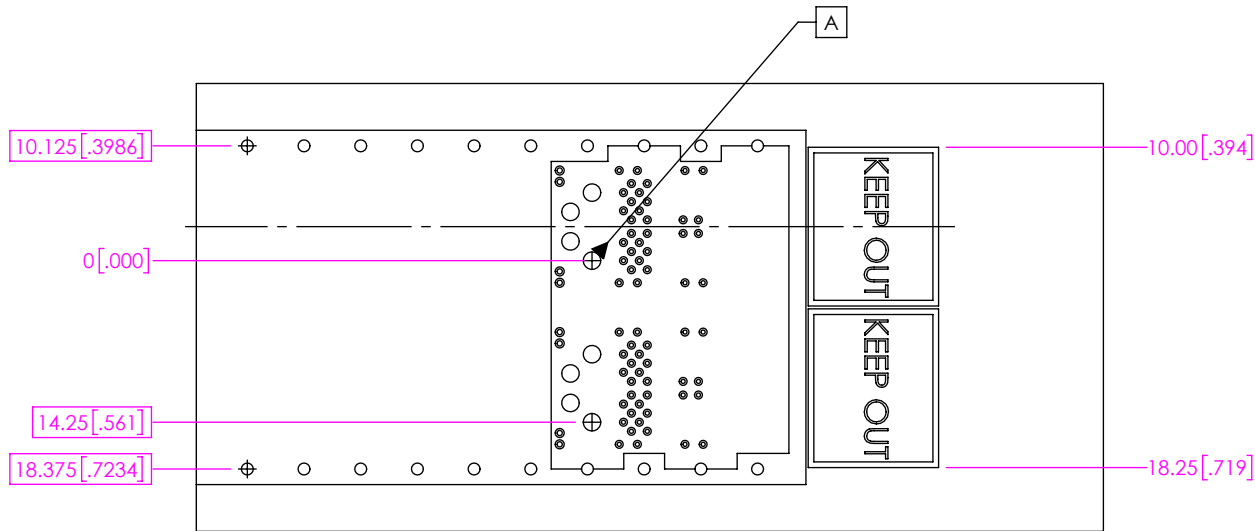


FIG 5  
2 PORT BELLY TO BELLY FOOTPRINT SHOWN  
(DIFFERENT AS SHOWN, OTHERWISE SAME AS FIG 1 & FIG 2)

• PROPRIETARY NOTE •  
THIS DOCUMENT CONTAINS CONFIDENTIAL AND PROPRIETARY INFORMATION AND ALL DESIGN, MANUFACTURING, REPRODUCTION, USE, PATENT RIGHTS AND SALES RIGHTS ARE EXPRESSLY RESERVED BY SAMTEC, INC. THIS DOCUMENT SHALL NOT BE DISCLOSED, IN WHOLE OR PART, TO ANY UNAUTHORIZED PERSON OR ENTITY NOR REPRODUCED, TRANSFERRED OR INCORPORATED IN ANY OTHER PROJECT IN ANY MANNER WITHOUT THE EXPRESS WRITTEN CONSENT OF SAMTEC, INC.



520 PARK EAST BLVD, NEW ALBANY, IN 47150  
PHONE: 812-944-6733 FAX: 812-948-5047  
e-Mail info@SAMTEC.com code 55322

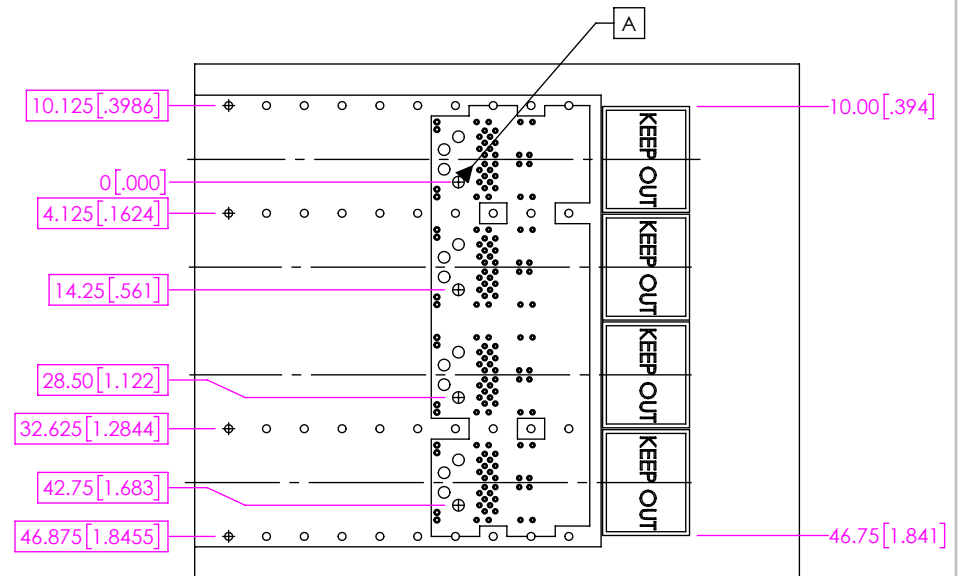
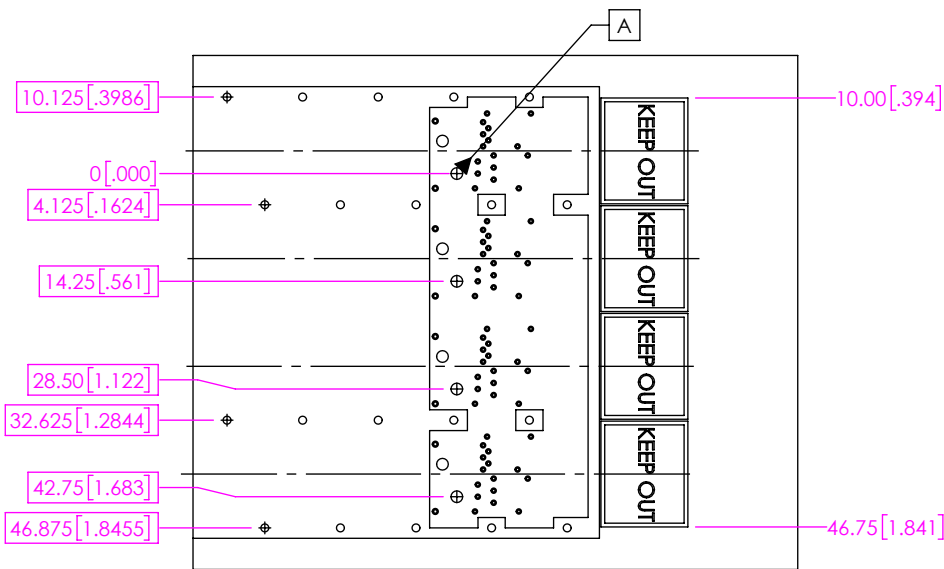


FIG 6  
4 PORT FSFP-XX-XX.X-X SHOWN  
(DIFFERENT AS SHOWN, OTHERWISE SAME AS FIG 1)

FIG 7  
4 PORT BELLY TO BELLY FOOTPRINT SHOWN  
(DIFFERENT AS SHOWN, OTHERWISE SAME AS FIG 1 & FIG 2)