

Pb THIS PRODUCT MANUFACTURED WITH LEAD-FREE PROCESSING

DESIGNED & DIMENSIONED IN MILLIMETERS [INCHES]

GC47-X-XX-XXXXXX-XXXX

DO NOT SCALE FROM THIS PRINT

CABLE CALLOUT
-47: CCA-047-PFA CABLE

NO. OF ROWS
-1

NO. OF POSITIONS
-02, 04, 06, 08, 10
(SEE TABLE 2)

OVERALL ASSEMBLY LENGTH (OAL)
XXXX (MILLIMETERS)
(0100 MIN)

END 2 CONNECTOR
(SEE TABLE 4, SHT 2)
-BLANK: DOUBLE ENDED GC47

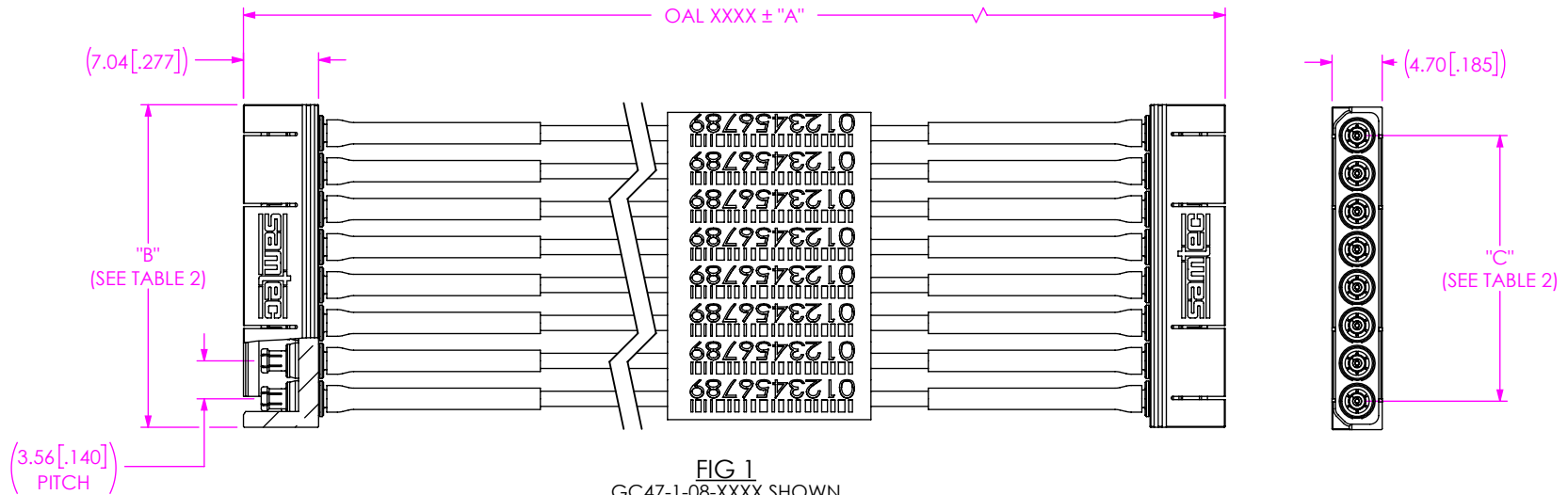
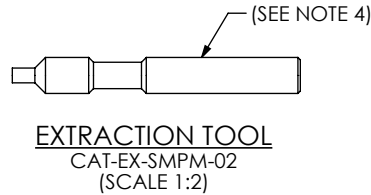


FIG 1
GC47-1-08-XXXX SHOWN
(DOUBLE ENDED GC47)
(SCALE 1.5:1)

OVERALL LENGTH	"A"
0100-0200 [3.94-7.87]	+3.0 [.12] / -0.0 [.00]
0201-0500 [7.91-19.69]	+5.0 [.20] / -0.0 [.00]
0501-9999 [19.72-39.37]	+10.0 [.39] / -0.0 [.00]

No OF POSITIONS	"B"	"C"
-02	8.89 [0.350]	3.56 [0.140]
-04	16.00 [0.630]	10.67 [0.420]
-06	22.10 [0.870]	17.78 [0.700]
-08	30.23 [1.190]	24.89 [0.980]
-10	37.34 [1.470]	32.00 [1.260]




NOTES:

- CONNECTORS TO BE ORIENTED ACCORDING TO CO-RF-WI-3048-M.
- PART TO BE PACKAGED IN ANTI-STATIC BAG.
- CABLES LONGER THAN 1000 MILLIMETERS ARE NOT SUPPORTED BY S.I. TEST DATA.
- CAT-EX-SMPM-02 EXTRACTION TOOL AVAILABLE UPON REQUEST.

PROPRIETARY NOTE
THIS DOCUMENT CONTAINS CONFIDENTIAL AND PROPRIETARY INFORMATION AND ALL DESIGN, MANUFACTURING, REPRODUCTION, USE, PATENT RIGHTS AND SALES RIGHTS ARE EXPRESSLY RESERVED BY SAMTEC, INC. THIS DOCUMENT SHALL NOT BE DISCLOSED, IN WHOLE OR PART, TO ANY UNAUTHORIZED PERSON OR ENTITY NOR REPRODUCED, TRANSFERRED OR INCORPORATED IN ANY OTHER PROJECT IN ANY MANNER WITHOUT THE EXPRESS WRITTEN CONSENT OF SAMTEC, INC.

DO NOT SCALE DRAWING SHEET SCALE: 3:1

MATERIAL:
BEAD: ULTEM
CONTACT: FERRULE, OUTER CONTACT: BERYLLIUM COPPER
RETAINING RING: STAINLESS STEEL
BODY: BERYLLIUM COPPER



520 PARK EAST BLVD, NEW ALBANY, IN 47150
PHONE: 812-944-6733 FAX: 812-948-5047
e-Mail info@SAMTEC.com code 55322

DESCRIPTION: GC47 GANGED CABLE ASSEMBLY

DWG. NO. GC47-X-XX-XXXXXX-XXXX

BY: ROSS P 7/22/22 SHEET 1 OF 12

TABLE 4

END OPTION	SERIES	GENDER	FINISH			CONNECTOR KIT P/N	FIGURE
			CENTER CONTACT	OUTER CONTACT	CABLE BODY		
-M0SP	SMPM	PLUG FULL DETENT	30µ" GOLD	10µ" GOLD	3µ" GOLD	PRFM0-P-C-HG-047A-SD	SHT 3, FIG 2
-M0SJ	SMPM	JACK	30µ" GOLD	10µ" GOLD	3µ" GOLD	PRFM0-J-C-HG-047A-SD	SHT 3, FIG 3
-92SP	2.92 MM	PLUG	50µ" GOLD	PASSIVATED	PASSIVATED	PRF92-P-C-EP-047A-SS	SHT 4, FIG 4
-92SJ	2.92 MM	JACK	50µ" GOLD	PASSIVATED	PASSIVATED	PRF92-J-C-EP-047A-SS	SHT 4, FIG 5
-18SP	1.85 MM	PLUG	50µ" GOLD	PASSIVATED	PASSIVATED	PRF18-P-C-EP-047A-SS	SHT 5, FIG 6
-18SJ	1.85 MM	JACK	50µ" GOLD	PASSIVATED	PASSIVATED	PRF18-J-C-EP-047A-SS	SHT 5, FIG 7
-24SP	2.4 MM	PLUG	50µ" GOLD	PASSIVATED	PASSIVATED	PRF24-P-C-EP-047A-SS	SHT 6, FIG 9
-24SJ	2.4 MM	JACK	50µ" GOLD	PASSIVATED	PASSIVATED	PRF24-J-C-EP-047A-SS	SHT 6, FIG 10
-M0RJ	SMPM	RIGHT ANGLE JACK	50µ" GOLD	50µ" GOLD	50µ" GOLD	PRFM0-J-C-EE-047A-RD	SHT 7, FIG 11
-M0BJ	SMPM	BULKHEAD JACK	50µ" GOLD	50µ" GOLD	50µ" GOLD	PRFM0-J-C-EE-047A-BD	SHT 7, FIG 12
-13SP	1.35 MM	PLUG	50µ" GOLD	PASSIVATED	PASSIVATED	PRF13-P-C-VP-047A-SS	SHT 8, FIG 13
-13BJ	1.35 MM	JACK	50µ" GOLD	PASSIVATED	PASSIVATED	PRF13-J-C-VP-047A-BS	SHT 8, FIG 14
-GC47	SMPM	JACK	50µ" GOLD	PASSIVATED	PASSIVATED	PRFM0-J-C-EE-047A-SD-1	SHT 9, FIG 15
-10SP	1.0 MM	PLUG	50µ" GOLD	PASSIVATED	PASSIVATED	PRF10-P-C-VP-047A-SS-X	SHT 9, FIG 16
-10BJ	1.0 MM	JACK	50µ" GOLD	PASSIVATED	PASSIVATED	PRF10-J-C-VP-047A-BS-X	SHT 10, FIG 17
-01SP	SMA	PLUG	50µ" GOLD	10µ" GOLD	10µ" GOLD	PRF01-P-C-EG-047A-SD	SHT 10, FIG 18
-01BJ	SMA	BULKHEAD JACK	50µ" GOLD	10µ" GOLD	10µ" GOLD	PRF01-J-C-EG-047A-BD	SHT 11, FIG 19
*01SB	SMA	SEALED BULKHEAD JACK	50µ" GOLD	10µ" GOLD	10µ" GOLD	PRF01-J-C-EG-047A-BD-1	SHT 11, FIG 20
*00SJ	SMP	JACK	50µ" GOLD	50µ" GOLD	50µ" GOLD	PRF00-J-C-EE-047A-SD-X	SHT 12, FIG 21
*00MJ	SMP	R/A JACK	50µ" GOLD	50µ" GOLD	50µ" GOLD	PRF00-J-C-EE-047A-RD-1-X	SHT 12, FIG 22
-SING	SINGLE ENDED	-	-	-	-	-	-
**XXXXXX	STRIPPED & TINNED	-	-	-	-	-	-

* = NOT RELEASED
 ** = END 2 OPTION ONLY

TABLE 5

END OPTION	MAXIMUM VSWR	MAXIMUM RETURN LOSS	MAXIMUM INSERTION LOSS (IL)	FREQUENCY	PROTECTIVE CAP COLOR
-M0SP	1.40:1	-15.56 dB	0.28	DC TO 40 GHz	GRAY
-M0SJ	1.40:1	-15.56 dB	0.28	DC TO 40 GHz	GRAY
-92SP	1.35:1	-16.45 dB	0.28	DC TO 40 GHz	YELLOW
-92SJ	1.35:1	-16.45 dB	0.28	DC TO 40 GHz	YELLOW
-18SP	1.40:1	-15.56 dB	0.37	DC TO 67 GHz	BLUE
-18SJ	1.40:1	-15.56 dB	0.37	DC TO 67 GHz	BLUE
-24SP	1.35:1	-16.45 dB	0.32	DC TO 50 GHz	GREEN
-24SJ	1.35:1	-16.45 dB	0.32	DC TO 50 GHz	GREEN
-M0RJ	1.40:1	-15.56 dB	0.20	DC TO 20 GHz	N/A
-M0BJ	1.40:1	-15.56 dB	0.28	DC TO 40 GHz	N/A
-13SP	1.40:1	-15.56 dB	0.39	DC TO 90 GHz	GRAY
-13BJ	1.40:1	-15.56 dB	0.39	DC TO 90 GHz	GRAY
-GC47	1.40:1	-15.56 dB	0.28	DC TO 40 GHz	N/A
-10SP	1.40:1	-15.56 dB	0.4	DC TO 90 GHz	WHITE
	1.50:1	-13.97 dB		90 TO 110 GHz	
-10BJ	1.40:1	-15.56 dB	0.4	DC TO 90 GHz	WHITE
	1.50:1	-13.97 dB		90 TO 110 GHz	
-01SP	1.30:1	-17.7dB	0.23	DC TO 26.5 GHz	BROWN
-01BJ	1.30:1	-17.7dB	0.23	DC TO 26.5 GHz	BROWN
*01SB	1.30:1	-17.7dB	0.23	DC TO 26.5 GHz	BROWN
*00SJ	1.20:1	-20.83 dB	0.5	DC TO 26.5 GHz	WHITE
	1.50:1	-14.0 dB		26.5 TO 40 GHz	
*00MJ	1.20:1	-20.83 dB	0.5	DC TO 26.5 GHz	WHITE

IL Max [dB] for cable assembly:
 = (35.06*SQRT(Freq[GHz])+1.835*Freq[GHz])*OAL[mm]/30480+End Option IL#1(See Table 3)+End Option IL#2(See Table 3)
 * = NOT RELEASED

c:\enterprisevault\DWG\MISC\MKTG\GC47-X-XX-XXXXXX-XXXX-MKT.SLDDRW

PROPRIETARY NOTE

THIS DOCUMENT CONTAINS CONFIDENTIAL AND PROPRIETARY INFORMATION AND ALL DESIGN, MANUFACTURING, REPRODUCTION, USE, PATENT RIGHTS AND SALES RIGHTS ARE EXPRESSLY RESERVED BY SAMTEC, INC. THIS DOCUMENT SHALL NOT BE DISCLOSED, IN WHOLE OR PART, TO ANY UNAUTHORIZED PERSON OR ENTITY NOR REPRODUCED, TRANSFERRED OR INCORPORATED IN ANY OTHER PROJECT IN ANY MANNER WITHOUT THE EXPRESS WRITTEN CONSENT OF SAMTEC, INC.



520 PARK EAST BLVD, NEW ALBANY, IN 47150
 PHONE: 812-944-6733 FAX: 812-948-5047
 e-Mail info@SAMTEC.com code 53322

DO NOT SCALE DRAWING
 SHEET SCALE: 4:1

DESCRIPTION:
 GC47 GANGED CABLE ASSEMBLY

DWG. NO.
 GC47-X-XX-XXXXXX-XXXX

BY: ROSS P 7/22/22 SHEET 2 OF 12

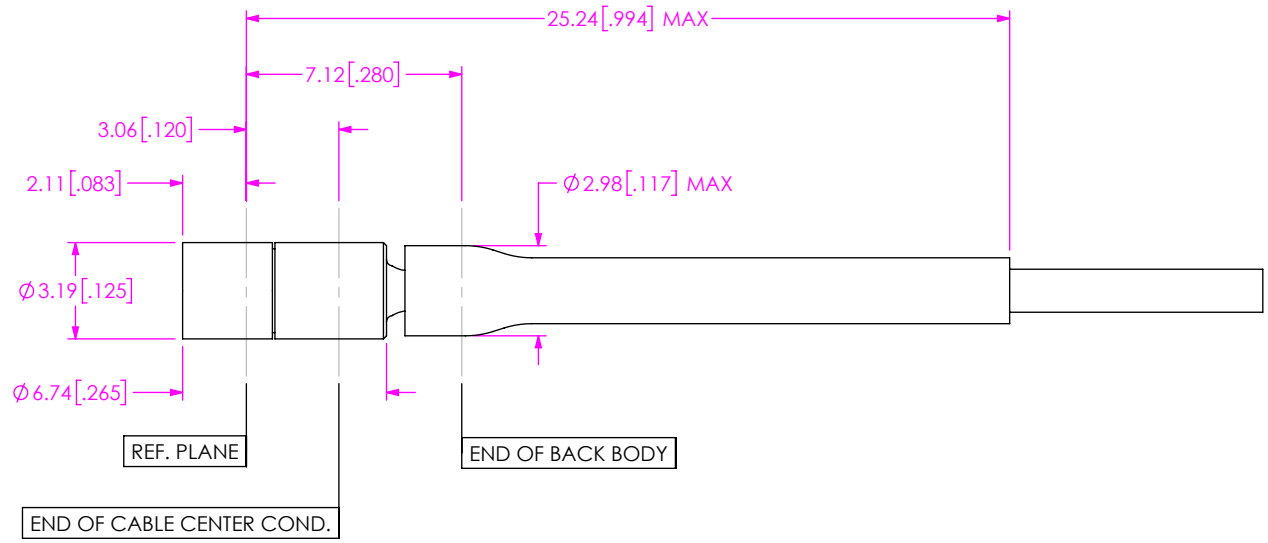


FIG 2
 -MOSP SHOWN
 (PROTECTIVE CAP NOT SHOWN FOR CLARITY)

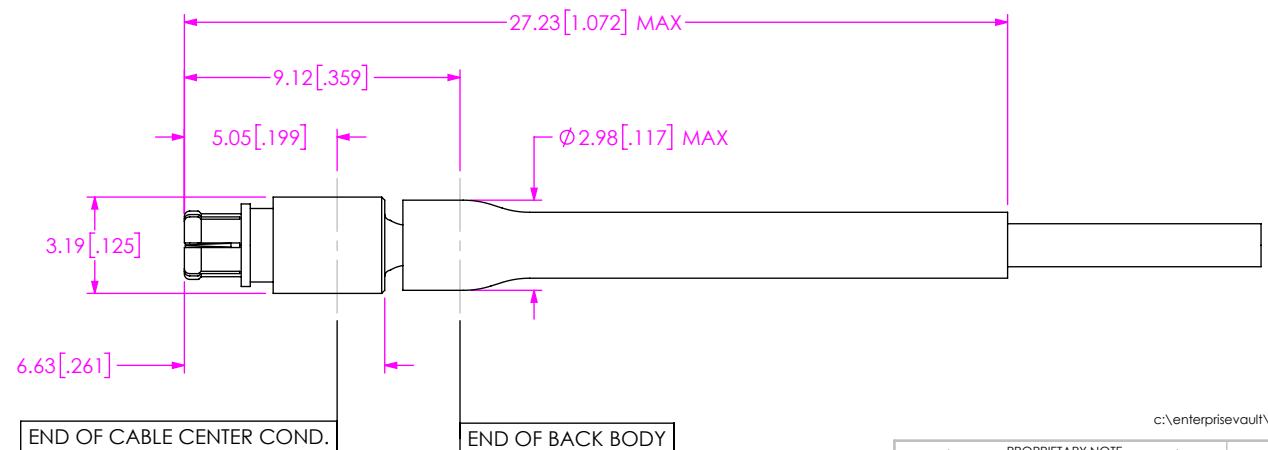


FIG 3
 -MOSJ SHOWN
 (PROTECTIVE CAP NOT SHOWN FOR CLARITY)

c:\enterprisevault\DWG\MISC\MKTG\GC47-X-XX-XXXXX-XXXX-MKT.SLDDRW

<p>PROPRIETARY NOTE</p> <p>THIS DOCUMENT CONTAINS CONFIDENTIAL AND PROPRIETARY INFORMATION AND ALL DESIGN, MANUFACTURING, REPRODUCTION, USE, PATENT RIGHTS AND SALES RIGHTS ARE EXPRESSLY RESERVED BY SAMTEC, INC. THIS DOCUMENT SHALL NOT BE DISCLOSED, IN WHOLE OR PART, TO ANY UNAUTHORIZED PERSON OR ENTITY NOR REPRODUCED, TRANSFERRED OR INCORPORATED IN ANY OTHER PROJECT IN ANY MANNER WITHOUT THE EXPRESS WRITTEN CONSENT OF SAMTEC, INC.</p>	<p>samtec</p> <p>520 PARK EAST BLVD., NEW ALBANY, IN 47150 PHONE: 812-944-6733 FAX: 812-948-5047 e-Mail info@SAMTEC.com code 55322</p>	
	<p>DESCRIPTION: GC47 GANGED CABLE ASSEMBLY</p>	
	<p>DWG. NO. GC47-X-XX-XXXXX-XXXX</p>	
<p>DO NOT SCALE DRAWING</p> <p>SHEET SCALE: 4:1</p>	<p>BY: ROSS P</p>	<p>7/22/22 SHEET 3 OF 12</p>

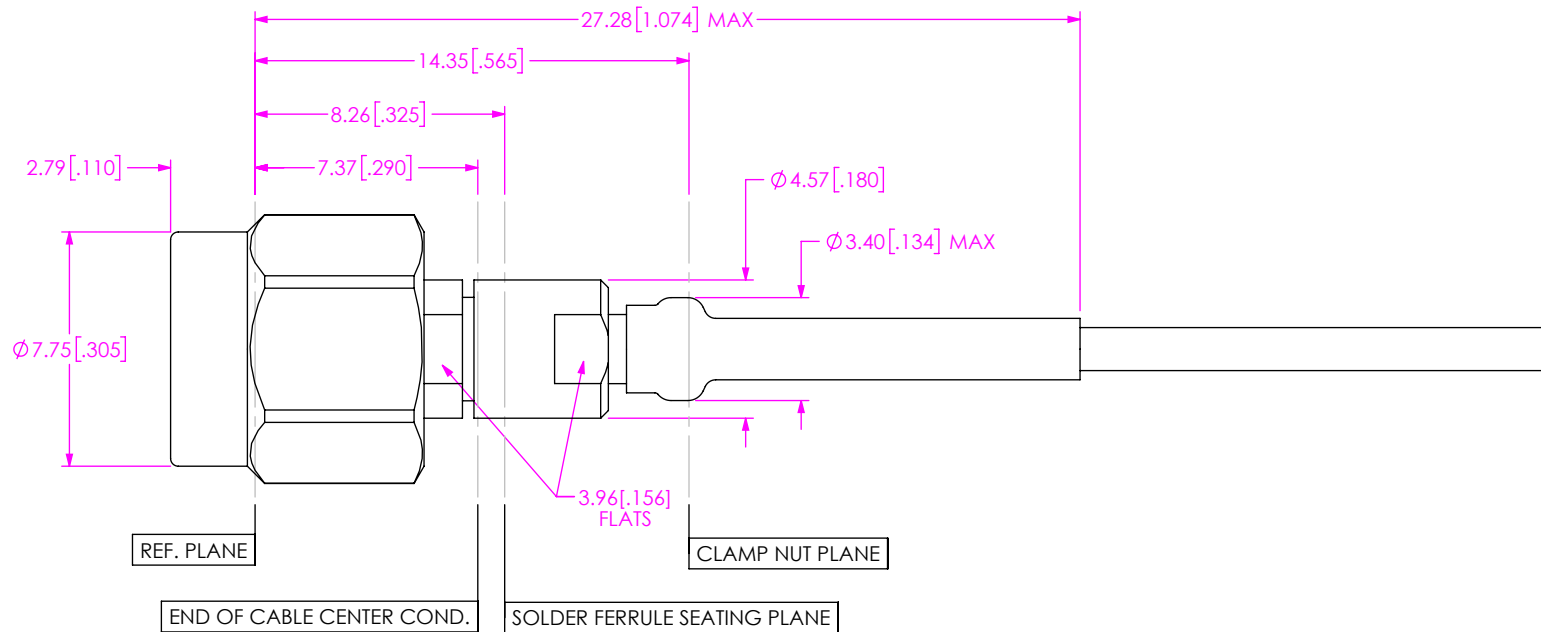


FIG 4
-92SP SHOWN
(PROTECTIVE CAP NOT SHOWN FOR CLARITY)

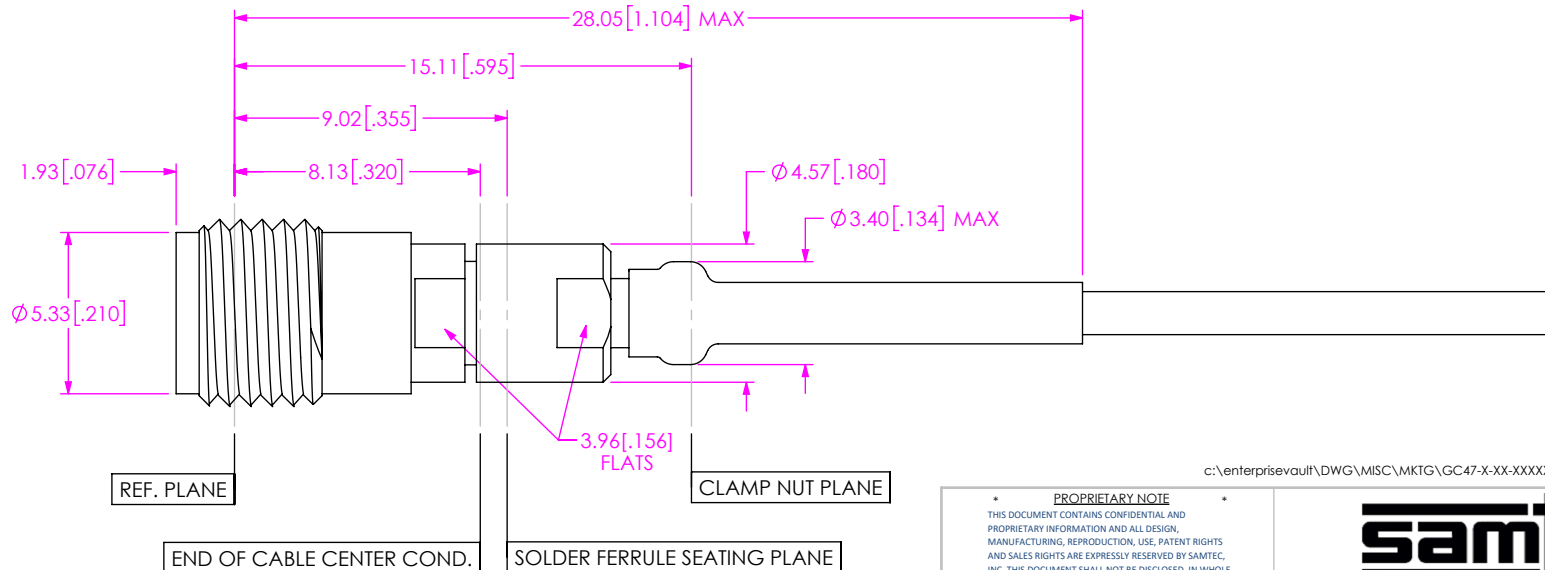


FIG 5
-92SJ SHOWN
(PROTECTIVE CAP NOT SHOWN FOR CLARITY)

c:\enterprisevault\DWG\MISC\MKTG\GC47-X-XX-XXXXXX-XXXX-MKT.SLDDRW

<p>PROPRIETARY NOTE</p> <p>THIS DOCUMENT CONTAINS CONFIDENTIAL AND PROPRIETARY INFORMATION AND ALL DESIGN, MANUFACTURING, REPRODUCTION, USE, PATENT RIGHTS AND SALES RIGHTS ARE EXPRESSLY RESERVED BY SAMTEC, INC. THIS DOCUMENT SHALL NOT BE DISCLOSED, IN WHOLE OR PART, TO ANY UNAUTHORIZED PERSON OR ENTITY NOR REPRODUCED, TRANSFERRED OR INCORPORATED IN ANY OTHER PROJECT IN ANY MANNER WITHOUT THE EXPRESS WRITTEN CONSENT OF SAMTEC, INC.</p>	<p>samtec</p> <p>520 PARK EAST BLVD, NEW ALBANY, IN 47150 PHONE: 812-944-6733 FAX: 812-948-5047 e-Mail info@SAMTEC.com code 55322</p>	
	<p>DO NOT SCALE DRAWING</p> <p>SHEET SCALE: 4:1</p>	
	<p>DESCRIPTION:</p> <p>GC47 GANGED CABLE ASSEMBLY</p>	<p>DWG. NO.</p> <p>GC47-X-XX-XXXXXX-XXXX</p>
<p>BY: ROSS P</p>		<p>7/22/22 SHEET 4 OF 12</p>

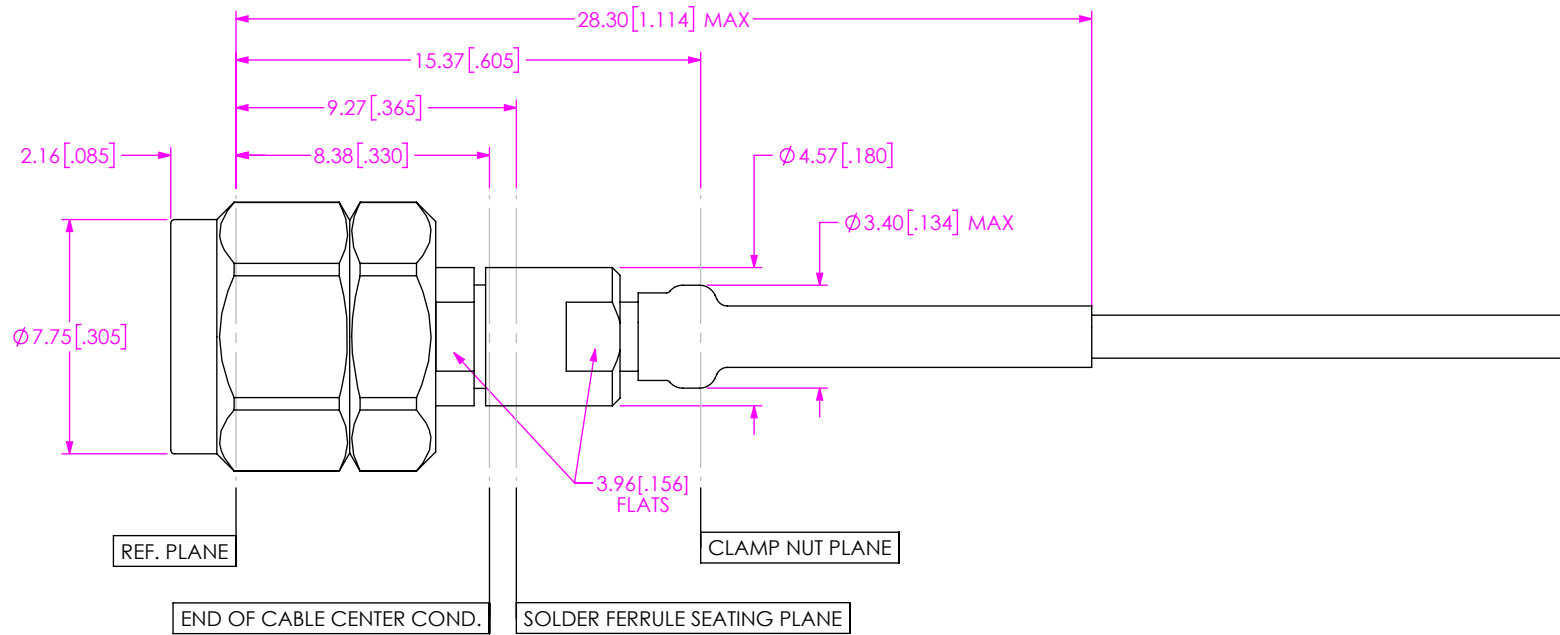


FIG 6
-18SP SHOWN
(PROTECTIVE CAP NOT SHOWN FOR CLARITY)

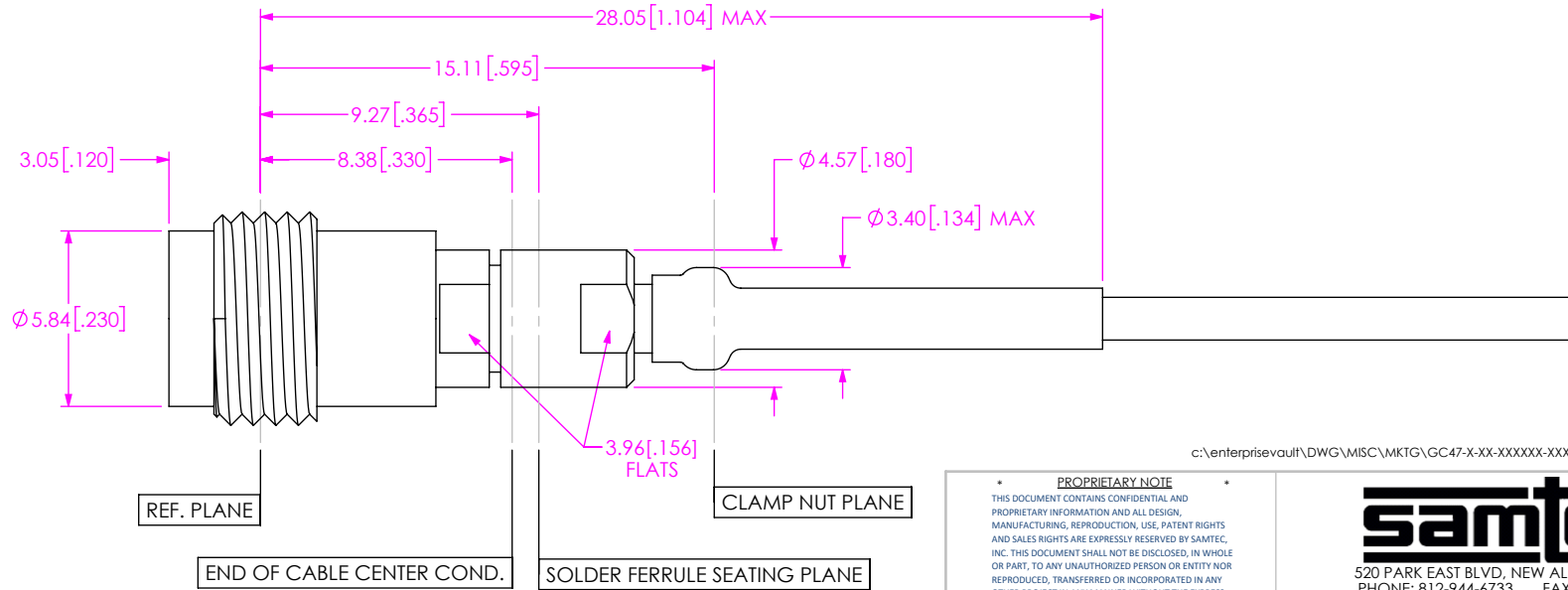


FIG 7
-18SJ SHOWN
(PROTECTIVE CAP NOT SHOWN FOR CLARITY)

c:\enterprisevault\DWG\MISC\MKTG\GC47-X-XX-XXXXXX-XXXX-MKT.SLDDRW

PROPRIETARY NOTE
THIS DOCUMENT CONTAINS CONFIDENTIAL AND PROPRIETARY INFORMATION AND ALL DESIGN, MANUFACTURING, REPRODUCTION, USE, PATENT RIGHTS AND SALES RIGHTS ARE EXPRESSLY RESERVED BY SAMTEC, INC. THIS DOCUMENT SHALL NOT BE DISCLOSED, IN WHOLE OR PART, TO ANY UNAUTHORIZED PERSON OR ENTITY NOR REPRODUCED, TRANSFERRED OR INCORPORATED IN ANY OTHER PROJECT IN ANY MANNER WITHOUT THE EXPRESS WRITTEN CONSENT OF SAMTEC, INC.



520 PARK EAST BLVD, NEW ALBANY, IN 47150
PHONE: 812-944-6733 FAX: 812-948-5047
e-Mail info@SAMTEC.com code 55322

DO NOT SCALE DRAWING
SHEET SCALE: 4:1

DESCRIPTION: GC47 GANGED CABLE ASSEMBLY

DWG. NO. GC47-X-XX-XXXXXX-XXXX

BY: ROSS P 7/22/22 SHEET 5 OF 12

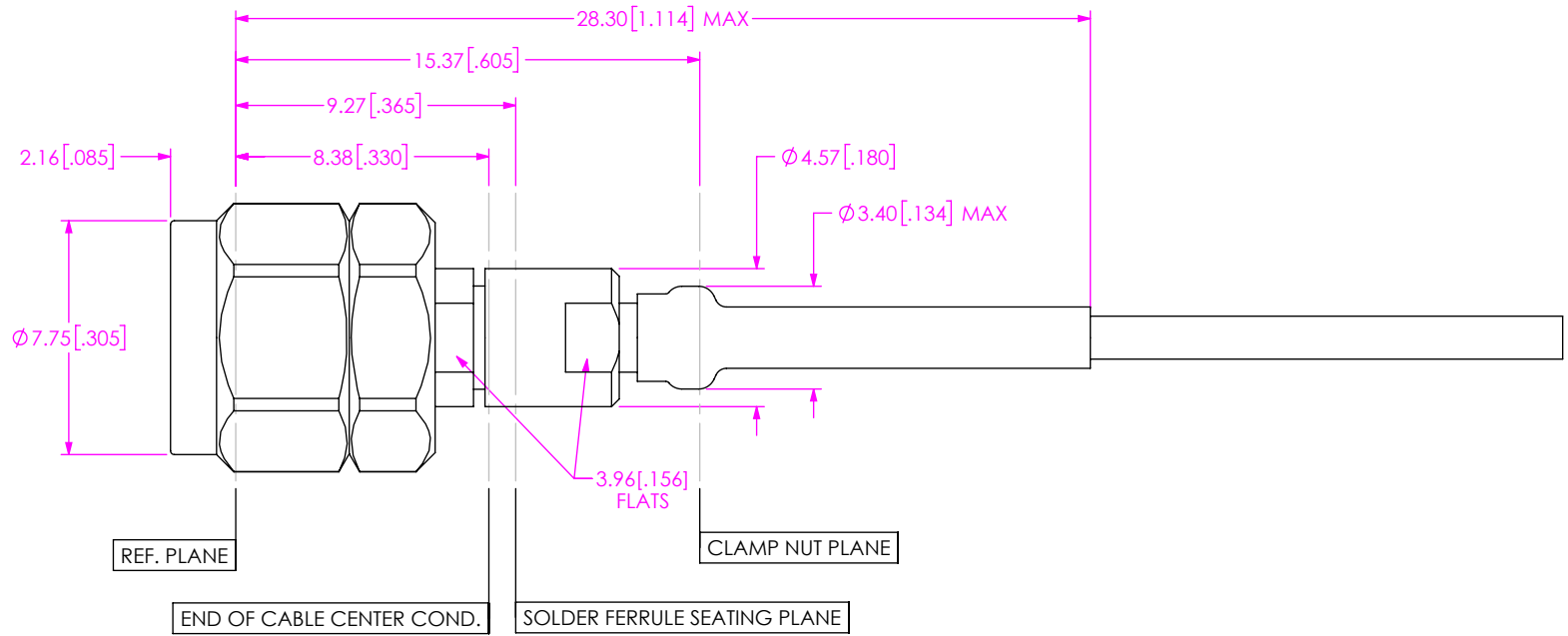


FIG 9
-24SP SHOWN
(PROTECTIVE CAP NOT SHOWN FOR CLARITY)

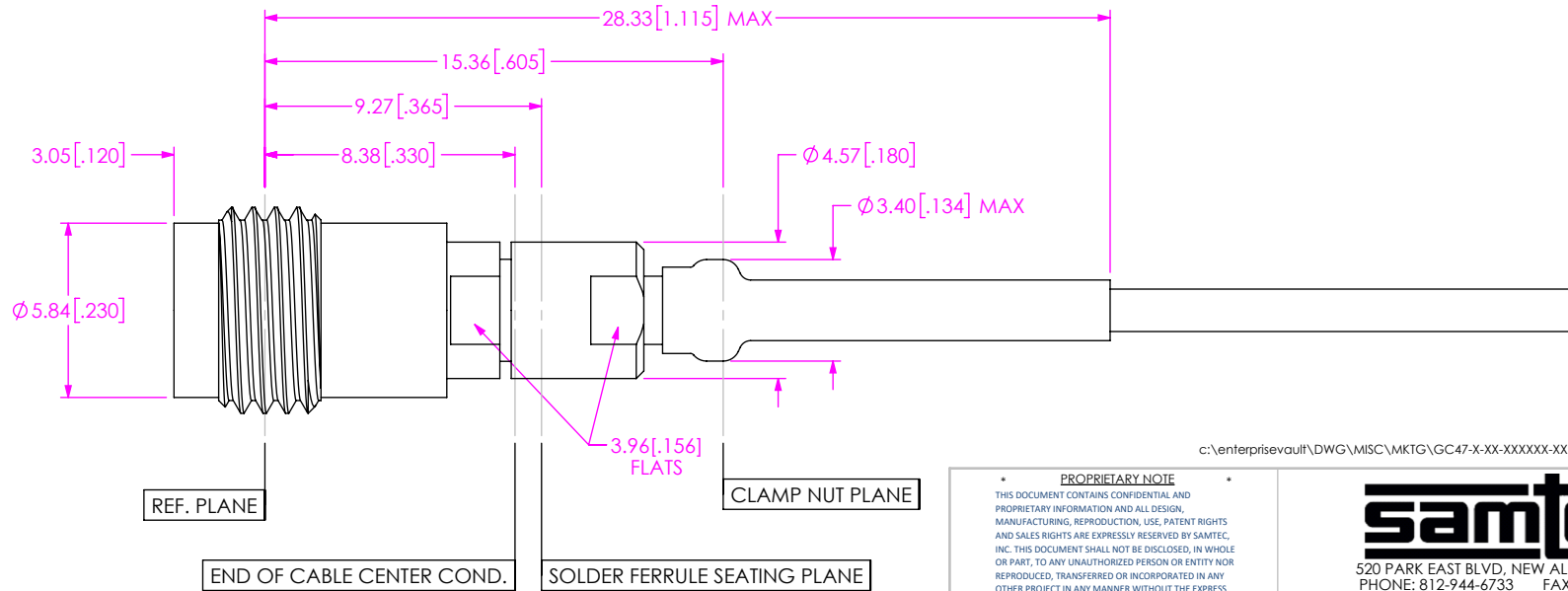


FIG 10
-24SJ SHOWN
(PROTECTIVE CAP NOT SHOWN FOR CLARITY)

c:\enterprise\vault\DWG\MISC\MKTG\GC47-X-XX-XXXXXX-XXXX-MKT.SLDDRW

PROPRIETARY NOTE
 * THIS DOCUMENT CONTAINS CONFIDENTIAL AND PROPRIETARY INFORMATION AND ALL DESIGN, MANUFACTURING, REPRODUCTION, USE, PATENT RIGHTS AND SALES RIGHTS ARE EXPRESSLY RESERVED BY SAMTEC, INC. THIS DOCUMENT SHALL NOT BE DISCLOSED, IN WHOLE OR PART, TO ANY UNAUTHORIZED PERSON OR ENTITY NOR REPRODUCED, TRANSFERRED OR INCORPORATED IN ANY OTHER PROJECT IN ANY MANNER WITHOUT THE EXPRESS WRITTEN CONSENT OF SAMTEC, INC.



520 PARK EAST BLVD, NEW ALBANY, IN 47150
 PHONE: 812-944-6733 FAX: 812-948-5047
 e-Mail info@SAMTEC.com code 55322

DO NOT SCALE DRAWING
 SHEET SCALE: 4:1

DESCRIPTION: GC47 GANGED CABLE ASSEMBLY

DWG. NO. GC47-X-XX-XXXXXX-XXXX

BY: ROSS P 7/22/22 SHEET 6 OF 12

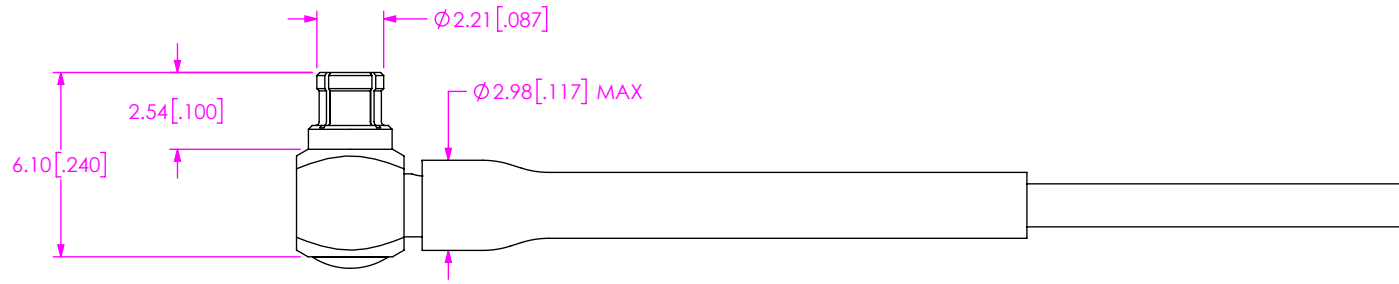


FIG 11
-MORJ SHOWN

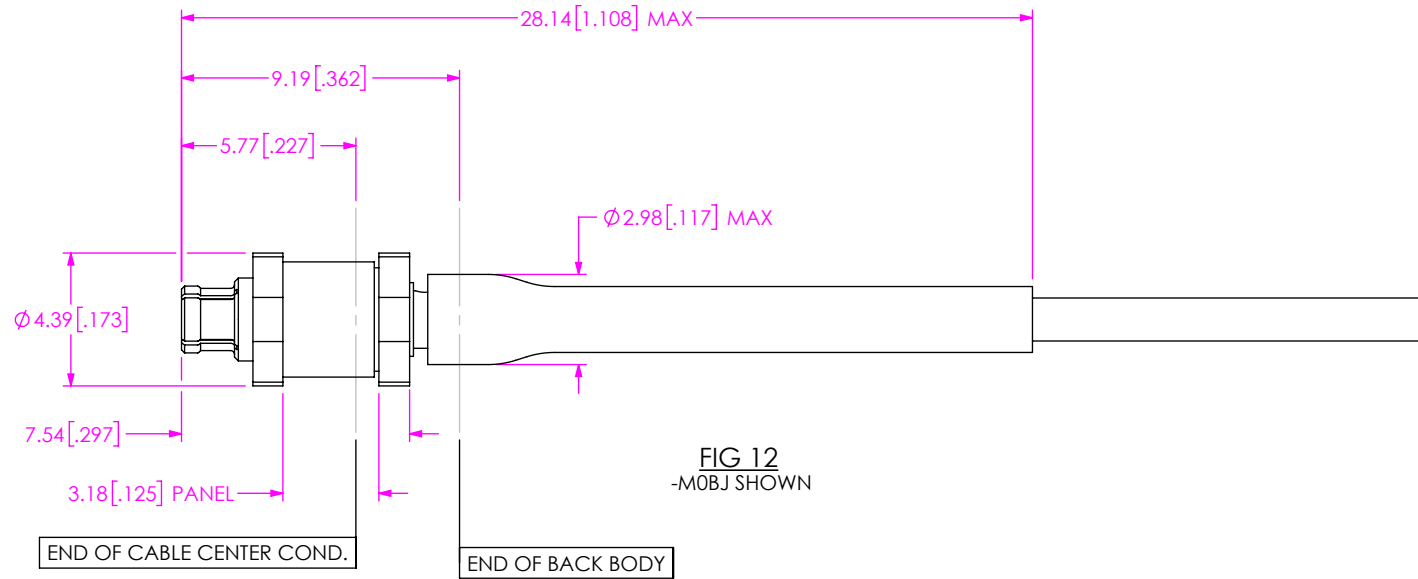


FIG 12
-MOBJ SHOWN

c:\enterprisevault\DWG\MISC\MKTG\GC47-X-XX-XXXXXX-XXXX-MKT.SLDDRW

PROPRIETARY NOTE
 THIS DOCUMENT CONTAINS CONFIDENTIAL AND PROPRIETARY INFORMATION AND ALL DESIGN, MANUFACTURING, REPRODUCTION, USE, PATENT RIGHTS AND SALES RIGHTS ARE EXPRESSLY RESERVED BY SAMTEC, INC. THIS DOCUMENT SHALL NOT BE DISCLOSED, IN WHOLE OR PART, TO ANY UNAUTHORIZED PERSON OR ENTITY NOR REPRODUCED, TRANSFERRED OR INCORPORATED IN ANY OTHER PROJECT IN ANY MANNER WITHOUT THE EXPRESS WRITTEN CONSENT OF SAMTEC, INC.



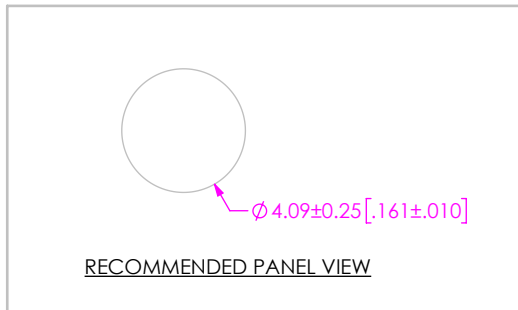
520 PARK EAST BLVD, NEW ALBANY, IN 47150
 PHONE: 812-944-6733 FAX: 812-948-5047
 e-Mail info@SAMTEC.com code 55322

SHEET SCALE: 4:1

DESCRIPTION:
GC47 GANGED CABLE ASSEMBLY

DWG. NO.
GC47-X-XX-XXXXXX-XXXX

BY: ROSS P 7/22/22 SHEET 7 OF 12



RECOMMENDED PANEL VIEW

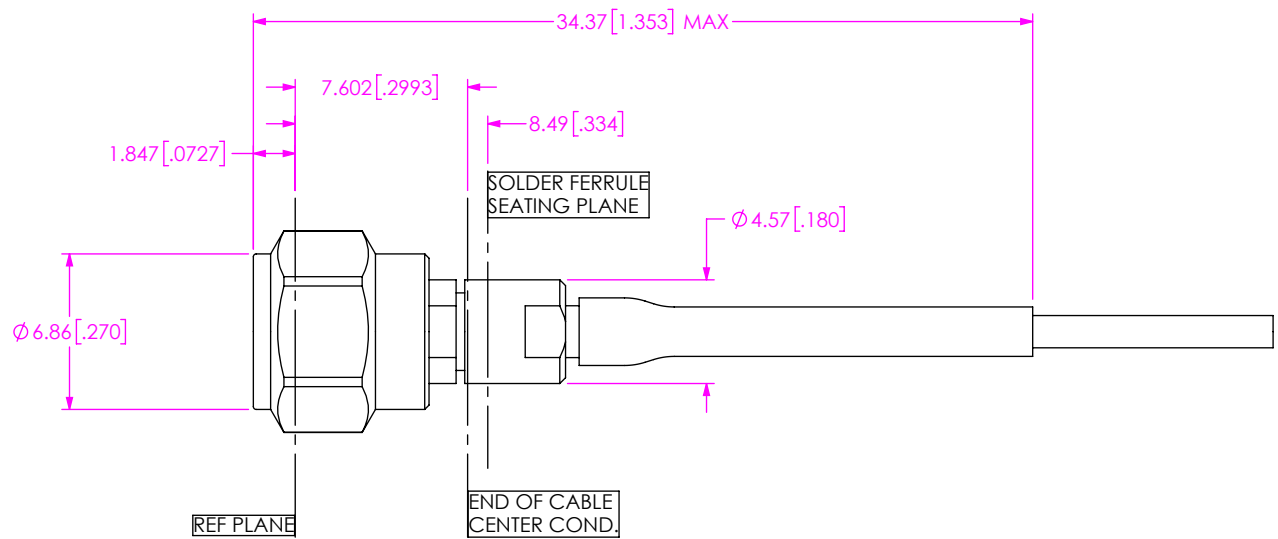


FIG 13
-13SP SHOWN

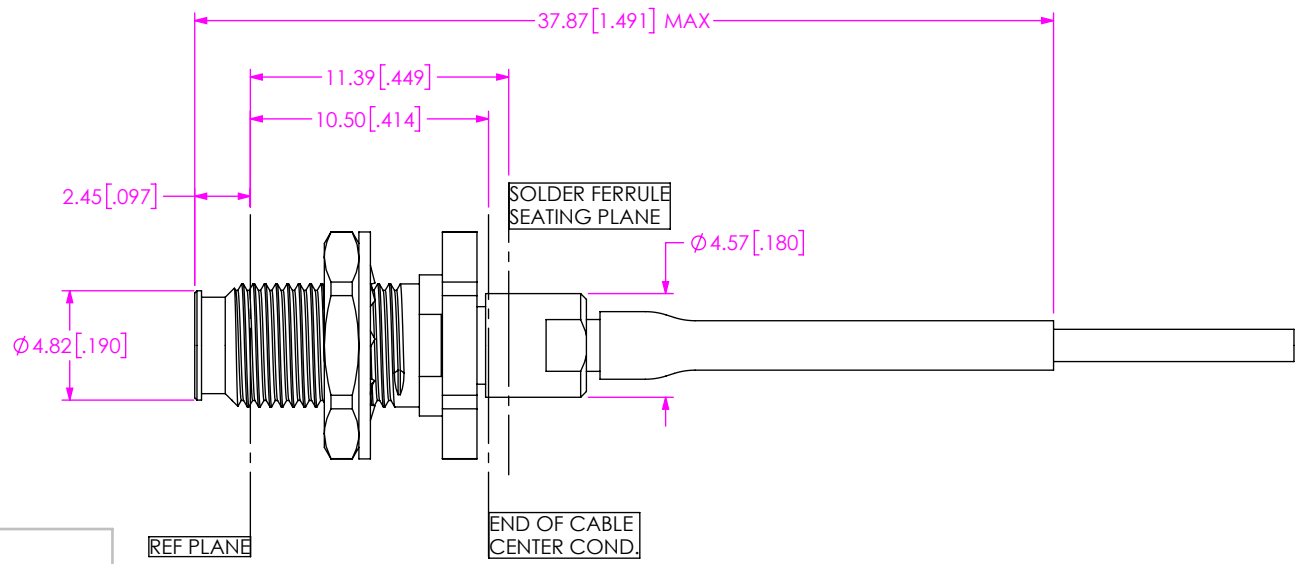
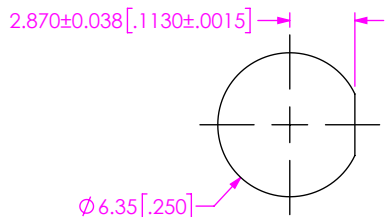


FIG 14
-13BJ SHOWN



PANEL CUT OUT
NOT TO SCALE

PROPRIETARY NOTE
THIS DOCUMENT CONTAINS CONFIDENTIAL AND PROPRIETARY INFORMATION AND ALL DESIGN, MANUFACTURING, REPRODUCTION, USE, PATENT RIGHTS AND SALES RIGHTS ARE EXPRESSLY RESERVED BY SAMTEC, INC. THIS DOCUMENT SHALL NOT BE DISCLOSED, IN WHOLE OR PART, TO ANY UNAUTHORIZED PERSON OR ENTITY NOR REPRODUCED, TRANSFERRED OR INCORPORATED IN ANY OTHER PROJECT IN ANY MANNER WITHOUT THE EXPRESS WRITTEN CONSENT OF SAMTEC, INC.



520 PARK EAST BLVD, NEW ALBANY, IN 47150
PHONE: 812-944-6733 FAX: 812-948-5047
e-Mail info@SAMTEC.com code 55322

DO NOT SCALE DRAWING

SHEET SCALE: 3:1

DESCRIPTION:
GC47 GANGED CABLE ASSEMBLY

DWG. NO.
GC47-X-XX-XXXXXX-XXXX

BY: ROSS P 7/22/22 SHEET 8 OF 12

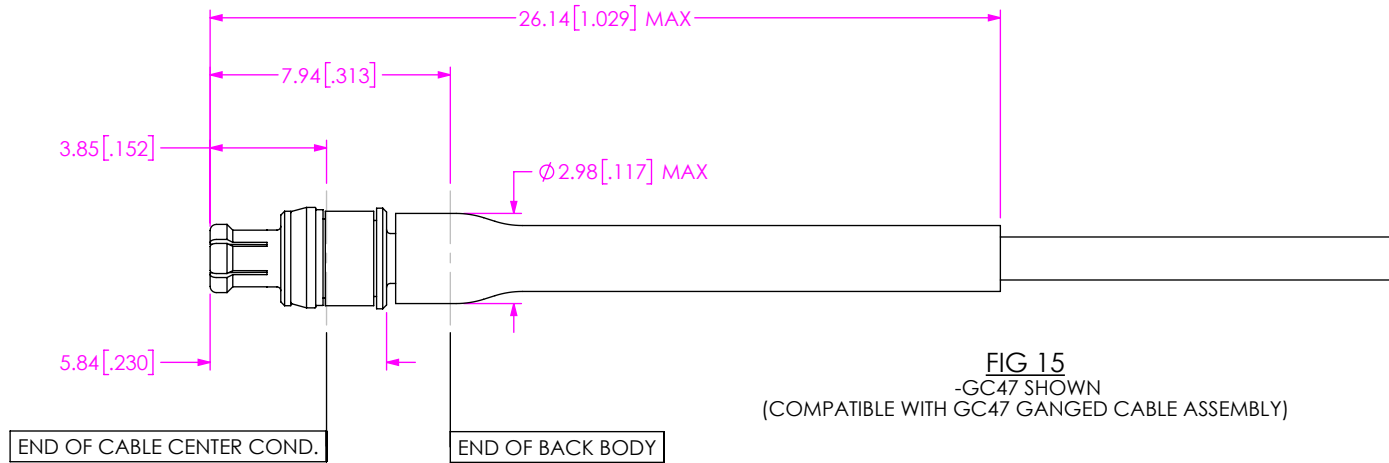


FIG 15
-GC47 SHOWN
(COMPATIBLE WITH GC47 GANGED CABLE ASSEMBLY)

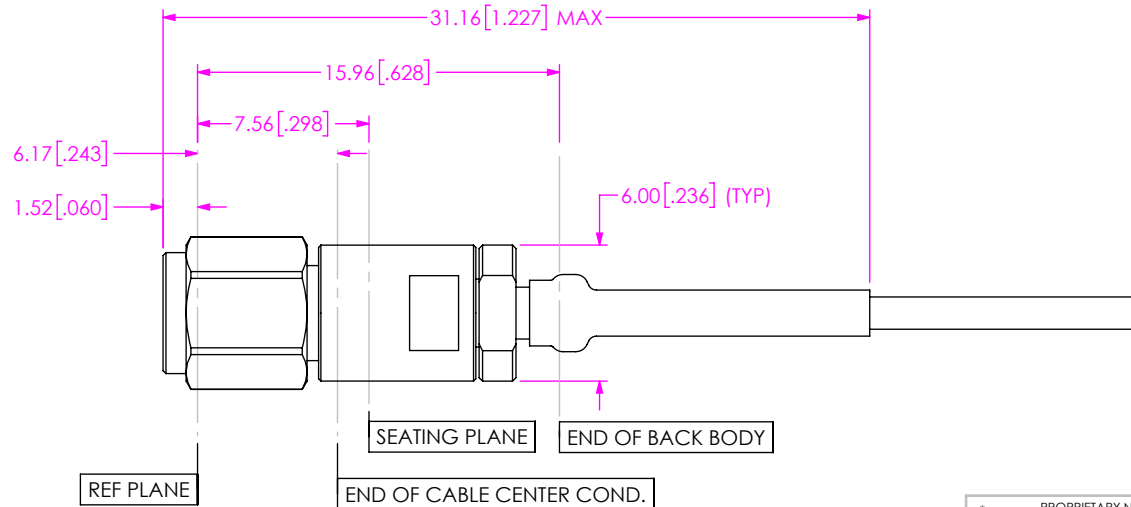


FIG 16
-10SP SHOWN
(PROTECTIVE CAP NOT SHOWN FOR CLARITY)

PROPRIETARY NOTE
 * THIS DOCUMENT CONTAINS CONFIDENTIAL AND PROPRIETARY INFORMATION AND ALL DESIGN, MANUFACTURING, REPRODUCTION, USE, PATENT RIGHTS AND SALES RIGHTS ARE EXPRESSLY RESERVED BY SAMTEC, INC. THIS DOCUMENT SHALL NOT BE DISCLOSED, IN WHOLE OR PART, TO ANY UNAUTHORIZED PERSON OR ENTITY NOR REPRODUCED, TRANSFERRED OR INCORPORATED IN ANY OTHER PROJECT IN ANY MANNER WITHOUT THE EXPRESS WRITTEN CONSENT OF SAMTEC, INC.



520 PARK EAST BLVD, NEW ALBANY, IN 47150
 PHONE: 812-944-6733 FAX: 812-948-5047
 e-Mail info@SAMTEC.com code 55322

DO NOT SCALE DRAWING

DESCRIPTION:
GC47 GANGED CABLE ASSEMBLY

DWG. NO.
GC47-X-XX-XXXXXX-XXXX

SHEET SCALE: 4:1

BY: ROSS P 7/22/22 SHEET 9 OF 12

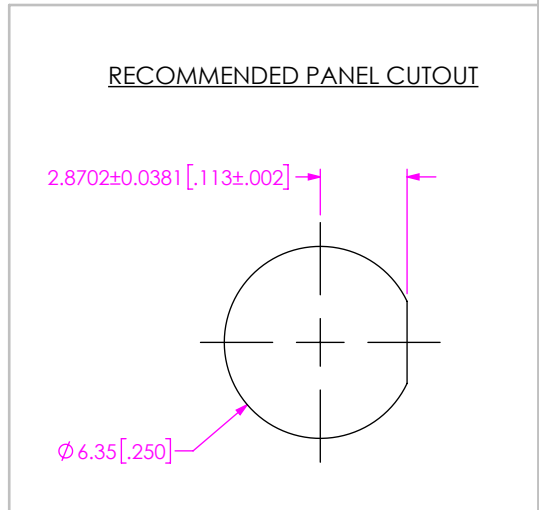
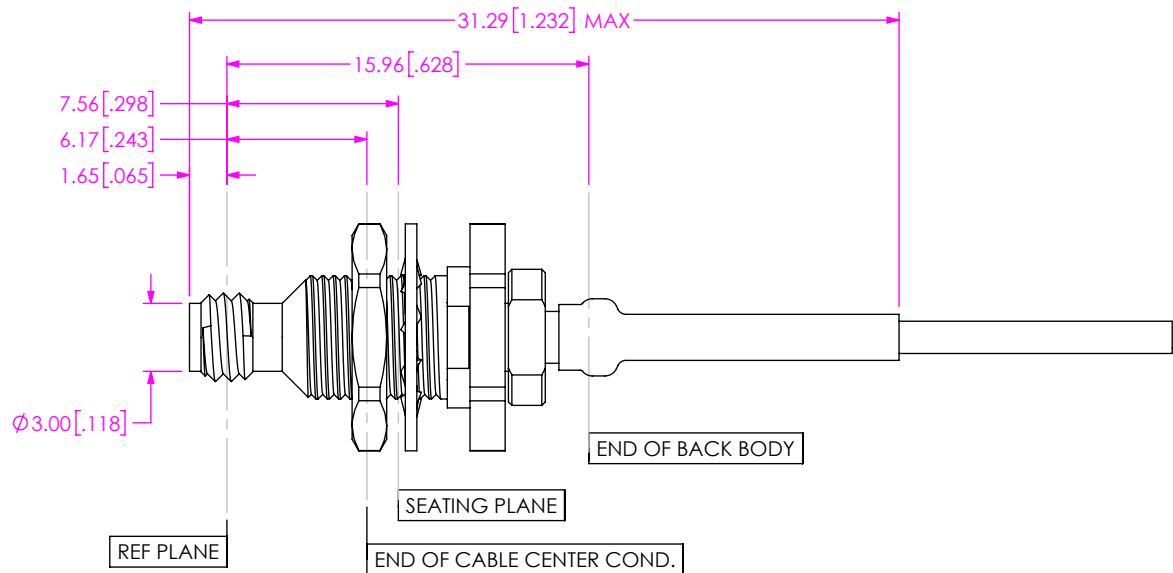


FIG 17
-10BJ SHOWN
(PROTECTIVE CAP NOT SHOWN FOR CLARITY)

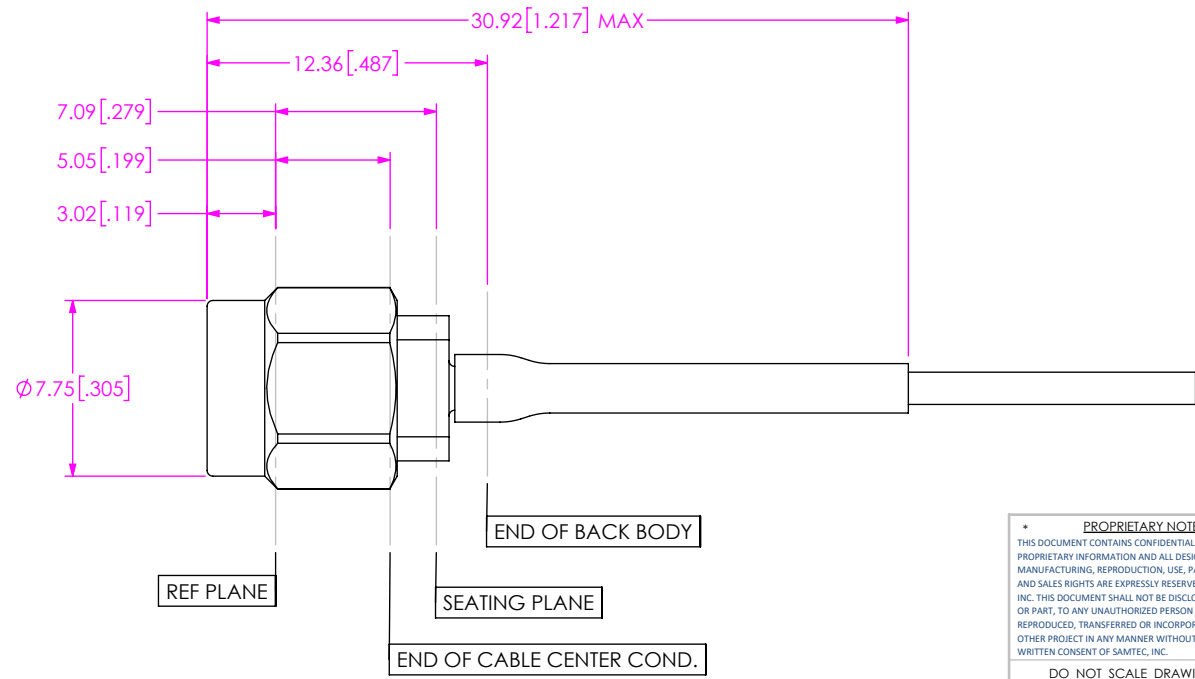


FIG 18
-01SP SHOWN
(PROTECTIVE CAP NOT SHOWN FOR CLARITY)

PROPRIETARY NOTE
THIS DOCUMENT CONTAINS CONFIDENTIAL AND PROPRIETARY INFORMATION AND ALL DESIGN, MANUFACTURING, REPRODUCTION, USE, PATENT RIGHTS AND SALES RIGHTS ARE EXPRESSLY RESERVED BY SAMTEC, INC. THIS DOCUMENT SHALL NOT BE DISCLOSED, IN WHOLE OR PART, TO ANY UNAUTHORIZED PERSON OR ENTITY NOR REPRODUCED, TRANSFERRED OR INCORPORATED IN ANY OTHER PROJECT IN ANY MANNER WITHOUT THE EXPRESS WRITTEN CONSENT OF SAMTEC, INC.



DO NOT SCALE DRAWING
SHEET SCALE: 4:1

DESCRIPTION:	GC47 GANGED CABLE ASSEMBLY
DWG. NO.	GC47-X-XX-XXXXXX-XXXX
BY: ROSS P	7/22/22 SHEET 10 OF 12

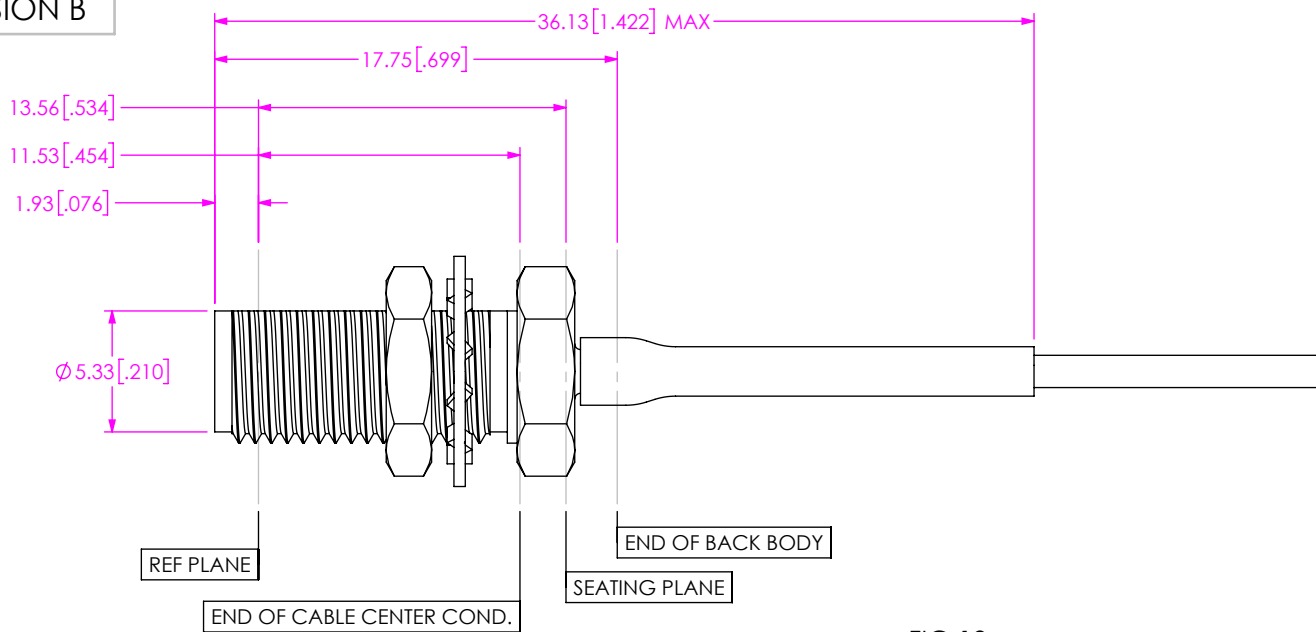


FIG 19
-01BJ SHOWN
(PROTECTIVE CAP NOT SHOWN FOR CLARITY)

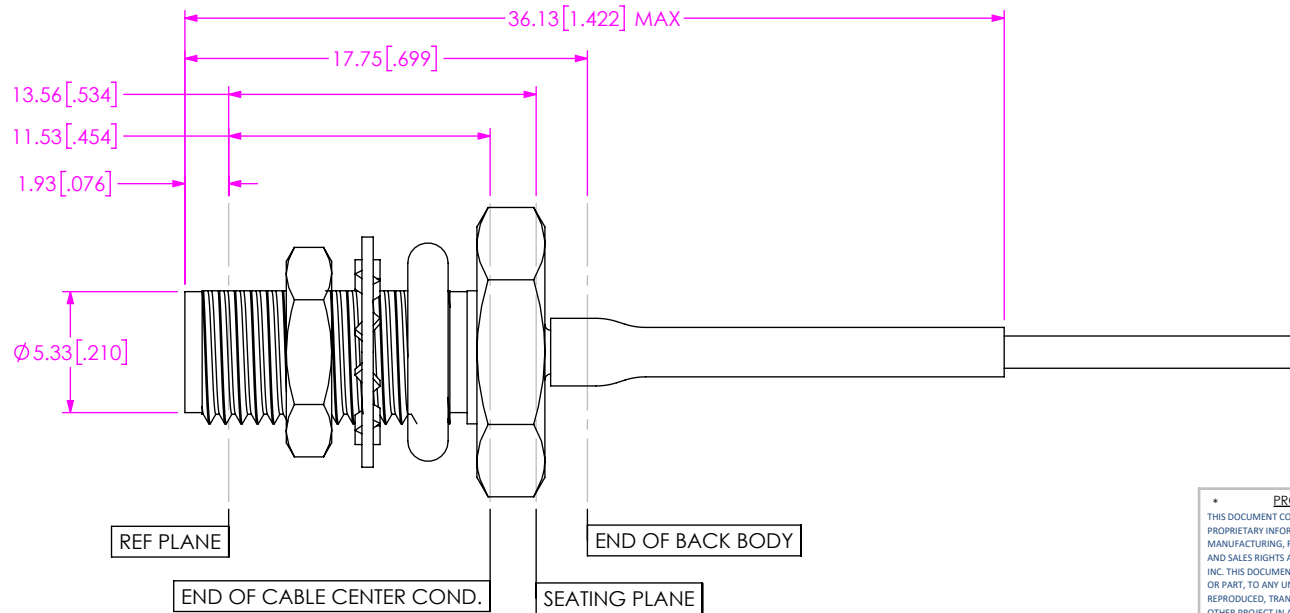
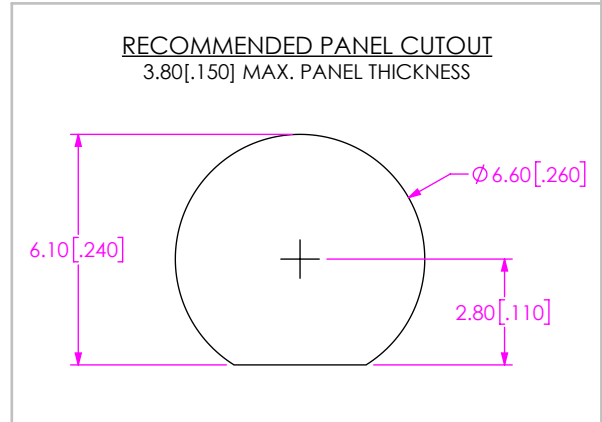
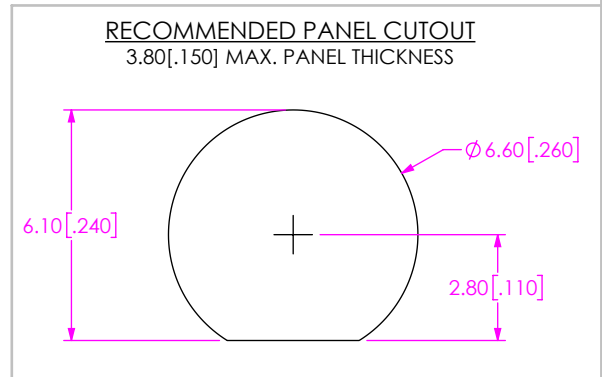


FIG 20
-01SB SHOWN
(PROTECTIVE CAP NOT SHOWN FOR CLARITY)



PROPRIETARY NOTE
THIS DOCUMENT CONTAINS CONFIDENTIAL AND PROPRIETARY INFORMATION AND ALL DESIGN, MANUFACTURING, REPRODUCTION, USE, PATENT RIGHTS AND SALES RIGHTS ARE EXPRESSLY RESERVED BY SAMTEC, INC. THIS DOCUMENT SHALL NOT BE DISCLOSED, IN WHOLE OR PART, TO ANY UNAUTHORIZED PERSON OR ENTITY NOR REPRODUCED, TRANSFERRED OR INCORPORATED IN ANY OTHER PROJECT IN ANY MANNER WITHOUT THE EXPRESS WRITTEN CONSENT OF SAMTEC, INC.



520 PARK EAST BLVD, NEW ALBANY, IN 47150
PHONE: 812-944-6733 FAX: 812-948-5047
e-Mail info@SAMTEC.com code 55322

DO NOT SCALE DRAWING

DESCRIPTION:
GC47 GANGED CABLE ASSEMBLY

DWG. NO.
GC47-X-XX-XXXXXX-XXXX

SHEET SCALE: 4:1

BY: ROSS P 7/22/22 SHEET 11 OF 12

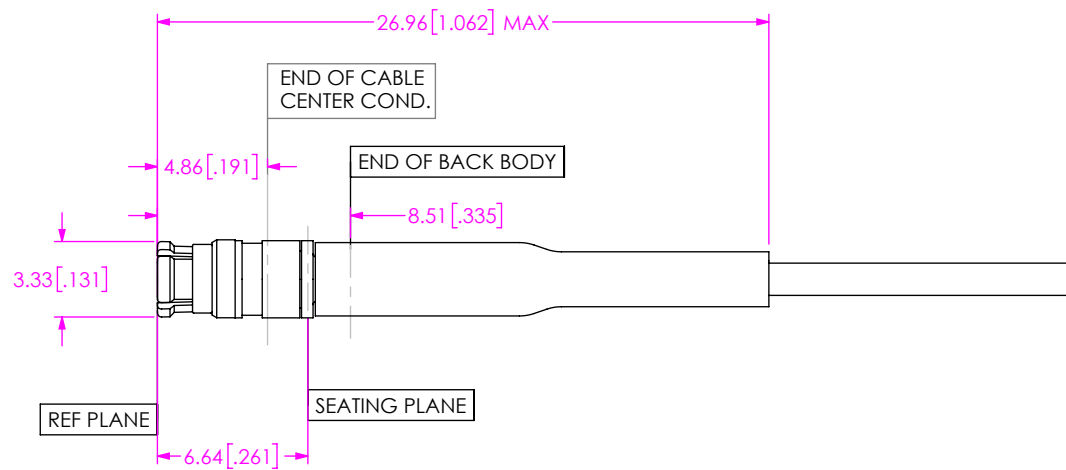


FIG 21
-00SJ SHOWN
(PROTECTIVE CAP NOT SHOWN FOR CLARITY)

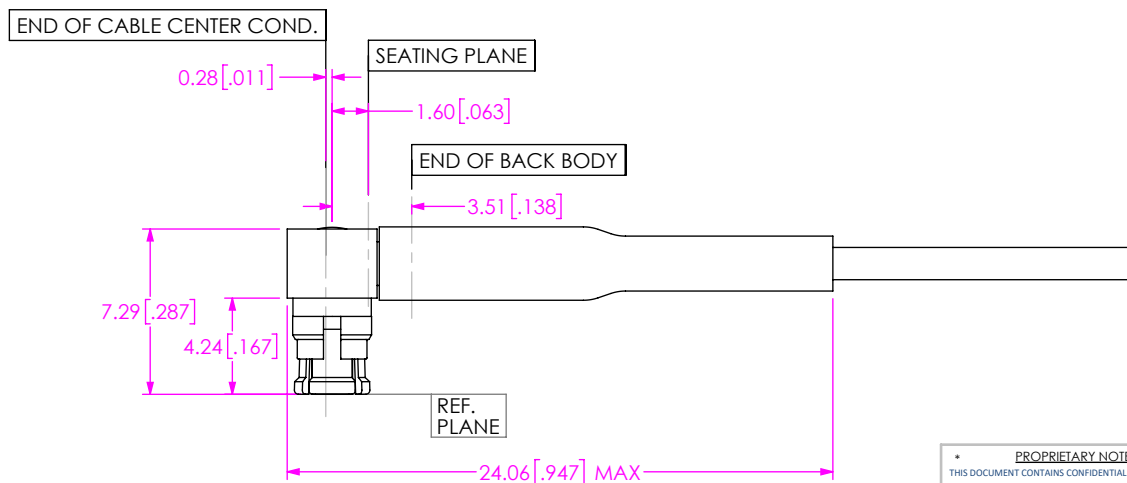



FIG 22
-00MJ SHOWN
(PROTECTIVE CAP NOT SHOWN FOR CLARITY)

<p>PROPRIETARY NOTE</p> <p>THIS DOCUMENT CONTAINS CONFIDENTIAL AND PROPRIETARY INFORMATION AND ALL DESIGN, MANUFACTURING, REPRODUCTION, USE, PATENT RIGHTS AND SALES RIGHTS ARE EXPRESSLY RESERVED BY SAMTEC, INC. THIS DOCUMENT SHALL NOT BE DISCLOSED, IN WHOLE OR PART, TO ANY UNAUTHORIZED PERSON OR ENTITY NOR REPRODUCED, TRANSFERRED OR INCORPORATED IN ANY OTHER PROJECT IN ANY MANNER WITHOUT THE EXPRESS WRITTEN CONSENT OF SAMTEC, INC.</p>		
	<p>520 PARK EAST BLVD, NEW ALBANY, IN 47150 PHONE: 812-944-6733 FAX: 812-948-5047 e-Mail info@SAMTEC.com code 55322</p>	
	<p>DO NOT SCALE DRAWING</p>	<p>DESCRIPTION: GC47 GANGED CABLE ASSEMBLY</p>
<p>SHEET SCALE: 4:1</p>	<p>DWG. NO. GC47-X-XX-XXXXXX-XXXX</p>	<p>BY: ROSS P 7/22/22 SHEET 12 OF 12</p>