

DESIGNED AND DIMENSIONED IN INCHES[MILLIMETERS]
ALL DIMENSIONS REFERENCE EXCEPT AS SHOWN

GPPB-XX-1-XX-XX-ST-SM-1N

DO NOT SCALE FROM THIS PRINT

SERIES
-B: BOARD
GENDER
-PF: PLUG FULL DETENT
-PS: PLUG SMOOTH BORE
-PC: CATCHER'S MITT

No OF ROWS
-1

No OF POSITIONS
-02, -04, -06, -08, -10

FINISH
-EG: 50µ" GOLD CENTER CONTACT, 10µ" GOLD OUTER BODY

ROW PITCH
-N: NOT APPLICABLE

CHANNEL PITCH
-1: .140" PITCH

TERMINATION
-SM: SURFACE MOUNT

ORIENTATION
-ST: STRAIGHT

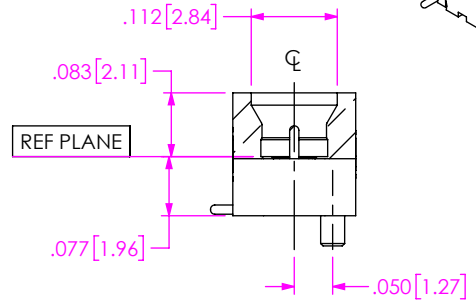
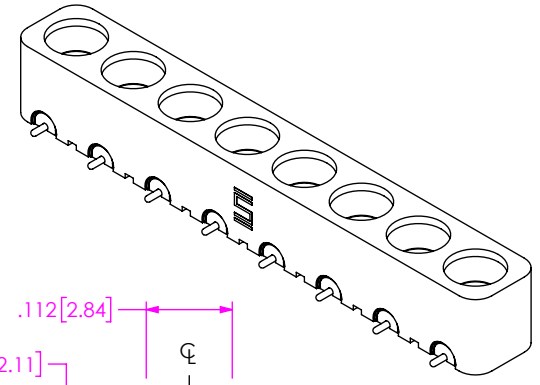
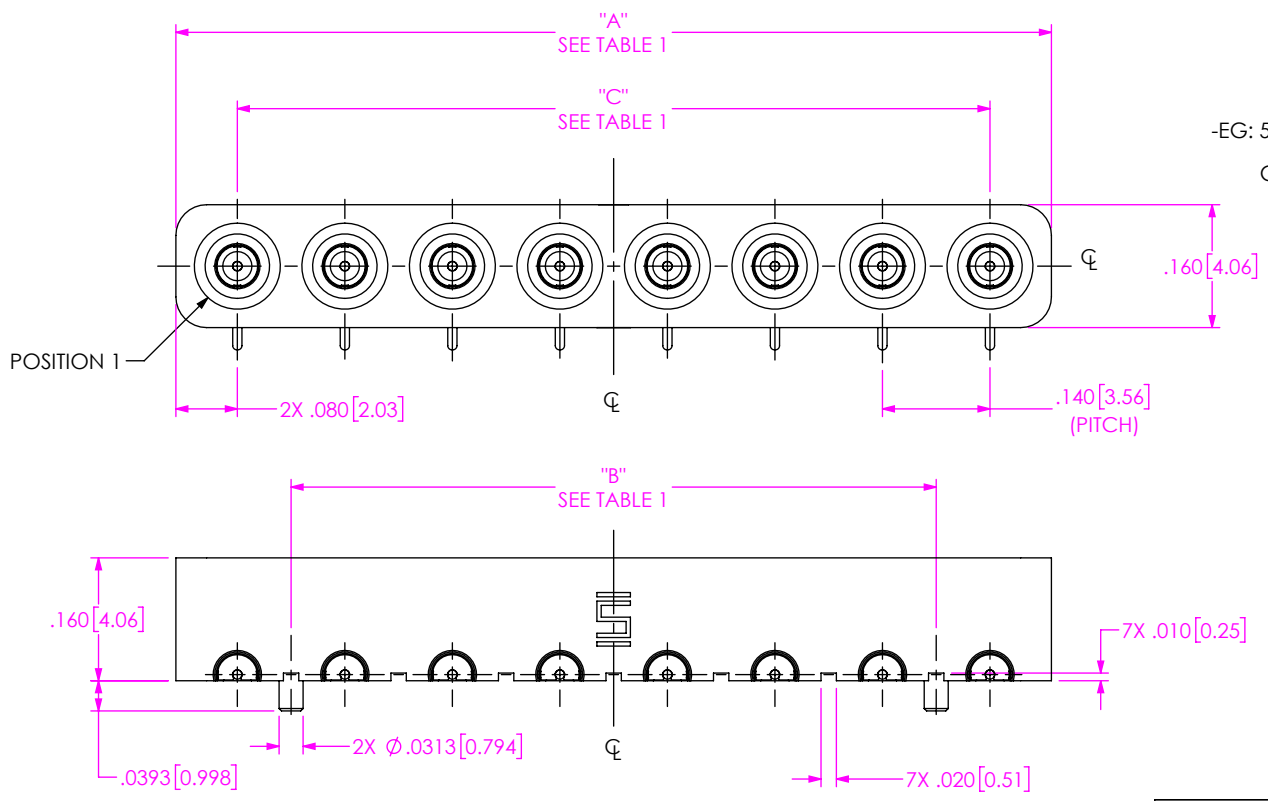


FIG 1
(GPPB-PF-1-08-XX-ST-SM-1N SHOWN)

TABLE 1			
No OF POSITIONS	"A"	"B"	"C"
-02	0.300 [7.62]	N/A	0.140 [3.56]
-04	0.580 [14.73]	0.280 [7.11]	0.420 [10.67]
-06	0.860 [21.84]	0.560 [14.22]	0.700 [17.78]
-08	1.140 [28.96]	0.840 [21.34]	0.980 [24.89]
-10	1.420 [36.07]	1.120 [28.45]	1.260 [32.00]

- NOTES:
- MATERIAL:
BEADS: VICTREX POLYMER.
CONTACT: BERYLLIUM COPPER.
BODY: BRASS ALLOY
 - FINISH:
BODY: GOLD OVER NICKEL PLATE, 10-30µ" MIN GOLD OVER 50-100µ" MIN NICKEL.
CONTACT: GOLD OVER NICKEL PLATE, 50-100µ" MIN GOLD OVER 50-100µ" MIN NICKEL.

PROPRIETARY NOTE
THIS DOCUMENT CONTAINS CONFIDENTIAL AND PROPRIETARY INFORMATION AND ALL DESIGN, MANUFACTURING, REPRODUCTION, USE, PATENT RIGHTS AND SALES RIGHTS ARE EXPRESSLY RESERVED BY SAMTEC, INC. THIS DOCUMENT SHALL NOT BE DISCLOSED, IN WHOLE OR PART, TO ANY UNAUTHORIZED PERSON OR ENTITY NOR REPRODUCED, TRANSFERRED OR INCORPORATED IN ANY OTHER PROJECT IN ANY MANNER WITHOUT THE EXPRESS WRITTEN CONSENT OF SAMTEC, INC.



520 PARK EAST BLVD. NEW ALBANY, IN 47150
PHONE: 812-944-6733 FAX: 812-948-5047
e-Mail info@SAMTEC.com code 55322

DO NOT SCALE DRAWING
SHEET SCALE: 4:1

DESCRIPTION:
GANGED SMPM SURFACE MOUNT, .140 PITCH

DWG. NO.
GPPB-XX-1-XX-XX-ST-SM-1N

BY: MATT M. 2/10/2022 SHEET 1 OF 4

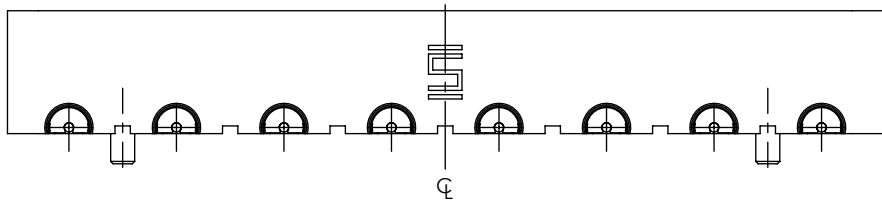


FIG 2
(GPPB-PS-1-08-XX-ST-SM-1N SHOWN)
(SAME AS FIG 1, EXCEPT AS SHOWN)

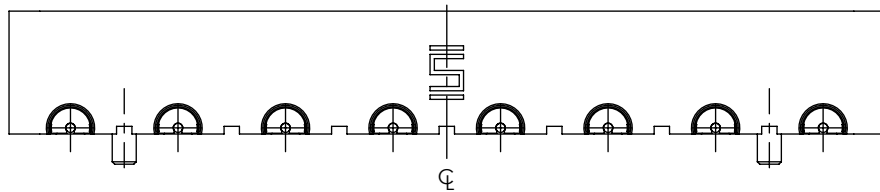
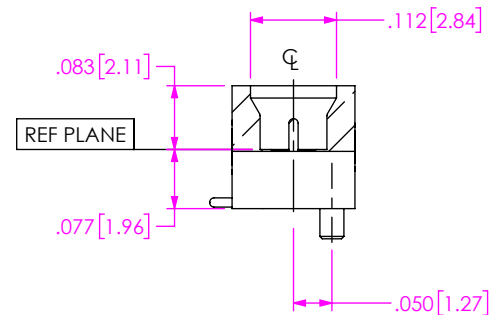
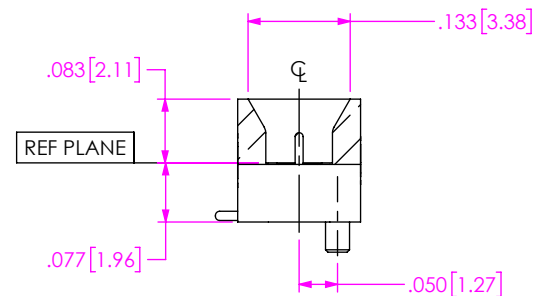


FIG 3
(GPPB-PC-1-08-XX-ST-SM-1N SHOWN)
(SAME AS FIG 1, EXCEPT AS SHOWN)



PROPRIETARY NOTE
THIS DOCUMENT CONTAINS CONFIDENTIAL AND PROPRIETARY INFORMATION AND ALL DESIGN, MANUFACTURING, REPRODUCTION, USE, PATENT RIGHTS AND SALES RIGHTS ARE EXPRESSLY RESERVED BY SAMTEC, INC. THIS DOCUMENT SHALL NOT BE DISCLOSED, IN WHOLE OR PART, TO ANY UNAUTHORIZED PERSON OR ENTITY NOR REPRODUCED, TRANSFERRED OR INCORPORATED IN ANY OTHER PROJECT IN ANY MANNER WITHOUT THE EXPRESS WRITTEN CONSENT OF SAMTEC, INC.

samtec

520 PARK EAST BLVD, NEW ALBANY, IN 47150
PHONE: 812-944-6733 FAX: 812-948-5047
e-Mail info@SAMTEC.com code 55322

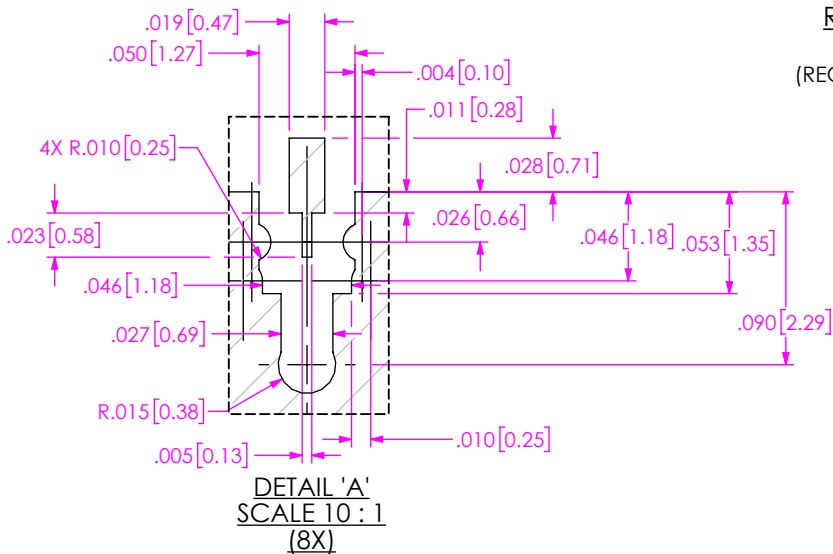
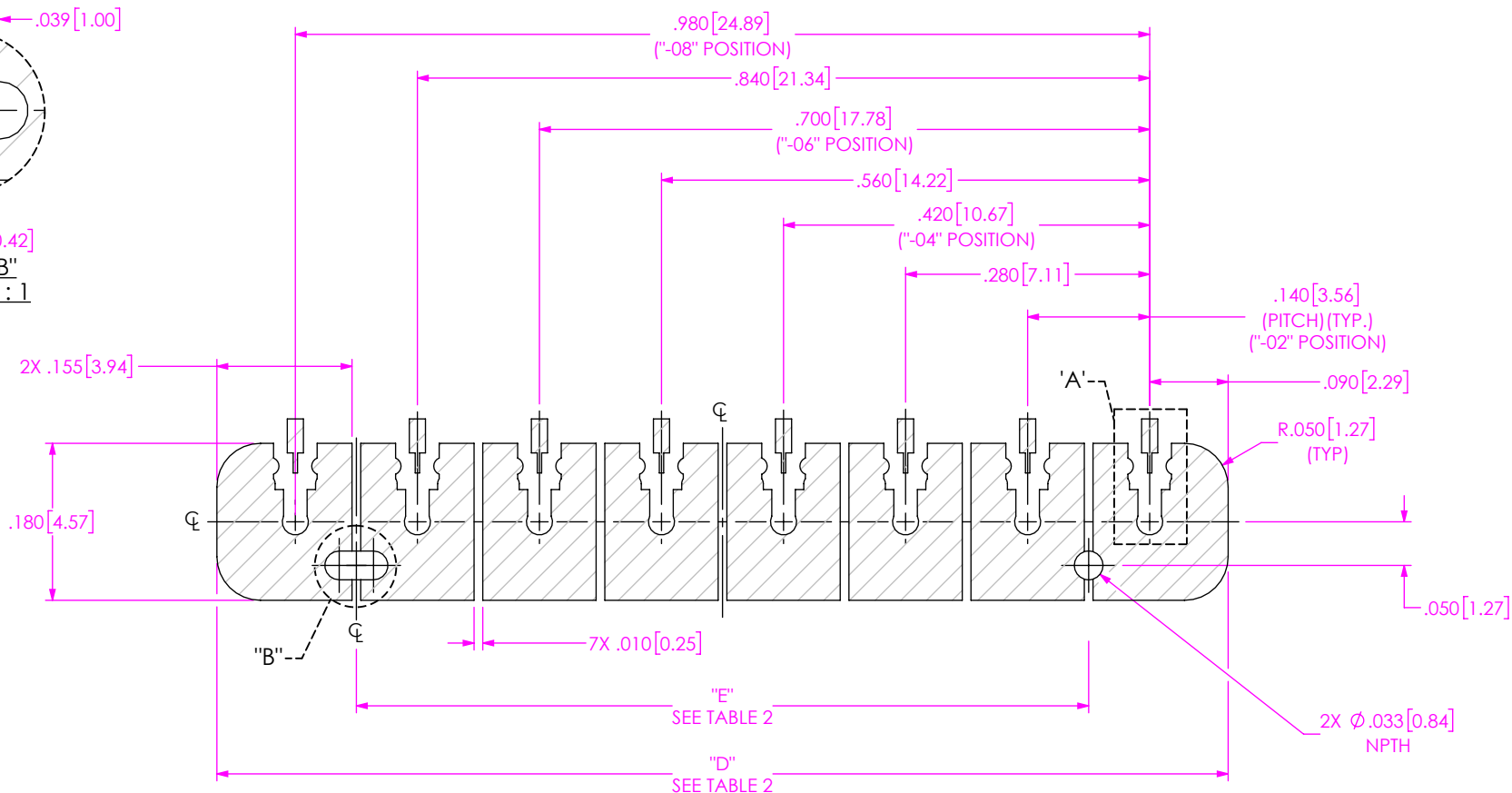
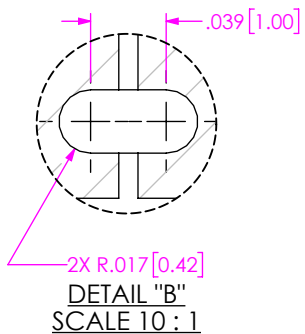
DO NOT SCALE DRAWING

DESCRIPTION:
GANGED SMPM SURFACE MOUNT, .140 PITCH

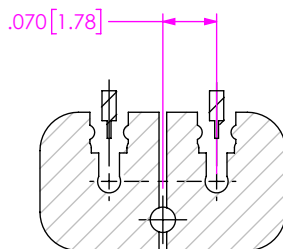
DWG. NO.
GPPB-XX-1-XX-XX-ST-SM-1N

SHEET SCALE: 4.5:1

BY: MATT M. 2/10/2022 SHEET 2 OF 4



RECOMMENDED FOOTPRINT
(GPPB-XX-1-XX-ST-SM-1N SHOWN)
(RECOMMEND .004" STENCIL THICKNESS")



RECOMMENDED "-02" FOOTPRINT
(GPPB-XX-1-02-ST-SM-1N SHOWN)
(SAME AS ABOVE FOOTPRINT UNLESS OTHERWISE SHOWN.)

TABLE 2		
No OF POSITIONS	"D"	"E"
-02	0.320 [8.13]	N/A
-04	0.600 [15.24]	0.280 [7.11]
-06	0.880 [22.35]	0.560 [14.22]
-08	1.160 [29.46]	0.840 [21.34]
-10	1.440 [36.58]	1.120 [28.45]

PROPRIETARY NOTE
THIS DOCUMENT CONTAINS CONFIDENTIAL AND PROPRIETARY INFORMATION AND ALL DESIGN, MANUFACTURING, REPRODUCTION, USE, PATENT RIGHTS AND SALES RIGHTS ARE EXPRESSLY RESERVED BY SAMTEC, INC. THIS DOCUMENT SHALL NOT BE DISCLOSED, IN WHOLE OR PART, TO ANY UNAUTHORIZED PERSON OR ENTITY NOR REPRODUCED, TRANSFERRED OR INCORPORATED IN ANY OTHER PROJECT IN ANY MANNER WITHOUT THE EXPRESS WRITTEN CONSENT OF SAMTEC, INC.



520 PARK EAST BLVD, NEW ALBANY, IN 47150
PHONE: 812-944-6733 FAX: 812-948-5047
e-Mail info@SAMTEC.com code 55322

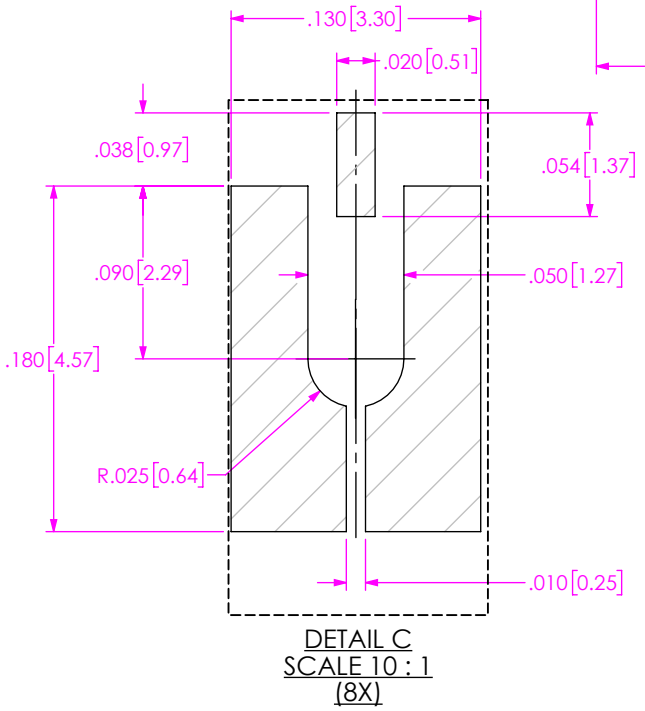
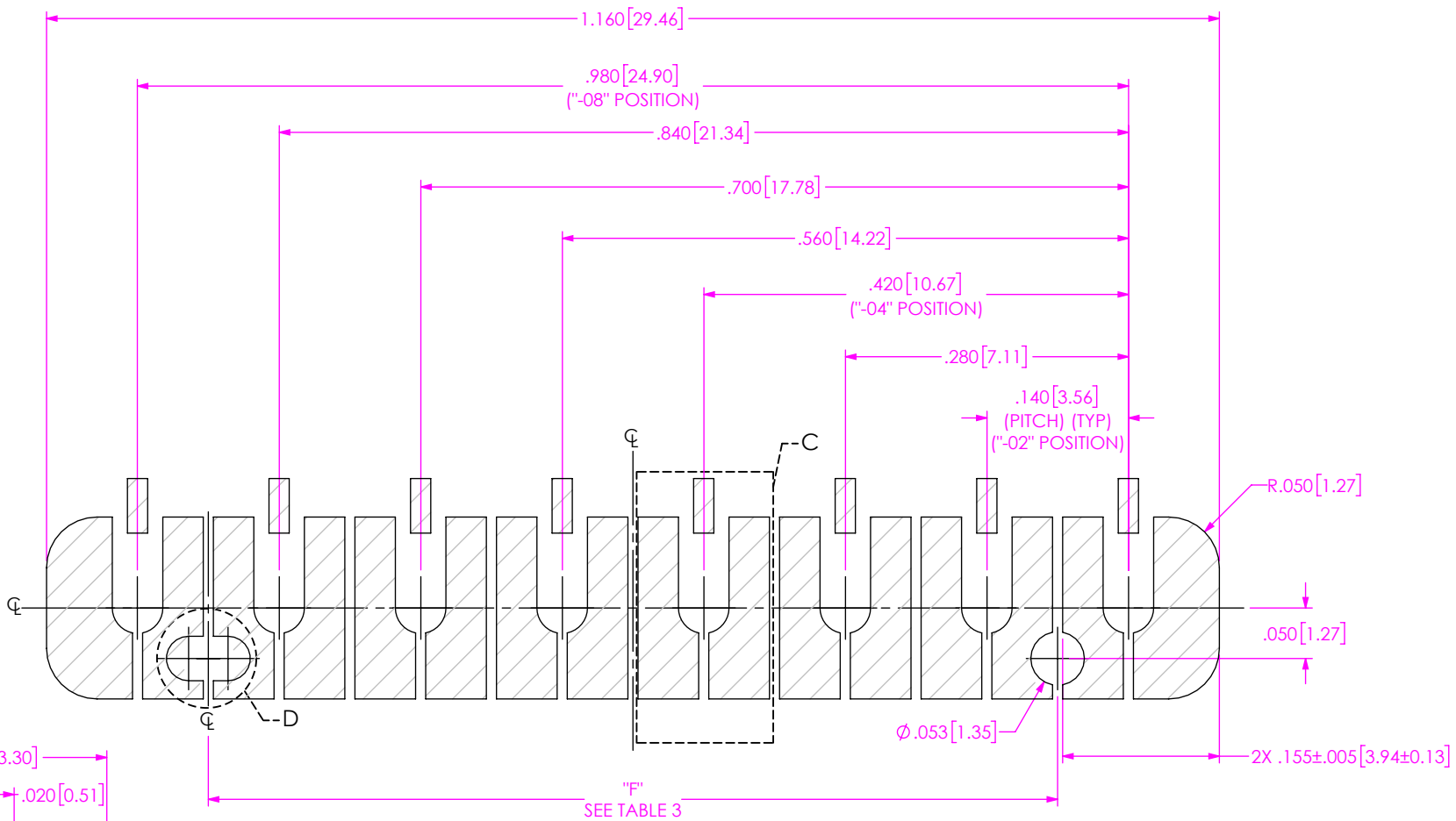
DO NOT SCALE DRAWING

SHEET SCALE: 5:1

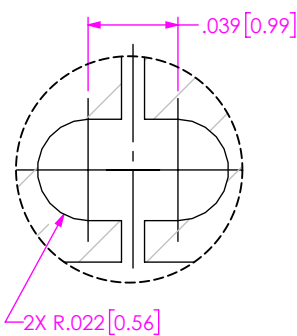
DESCRIPTION:
GANGED SMPM SURFACE MOUNT, .140 PITCH
DWG. NO.

GPPB-XX-1-XX-XX-ST-SM-1N

BY: MATT M. 2/10/2022 SHEET 3 OF 4



RECOMMENDED STENCIL
(GPPB-XX-1-XX-ST-SM-1N SHOWN)
(RECOMMEND .004" STENCIL THICKNESS")



No OF POSITIONS	"F"
-02	N/A
-04	0.280 [7.11]
-06	0.560 [14.22]
-08	0.840 [21.34]
-10	1.120 [28.45]

PROPRIETARY NOTE
THIS DOCUMENT CONTAINS CONFIDENTIAL AND PROPRIETARY INFORMATION AND ALL DESIGN, MANUFACTURING, REPRODUCTION, USE, PATENT RIGHTS AND SALES RIGHTS ARE EXPRESSLY RESERVED BY SAMTEC, INC. THIS DOCUMENT SHALL NOT BE DISCLOSED, IN WHOLE OR PART, TO ANY UNAUTHORIZED PERSON OR ENTITY NOR REPRODUCED, TRANSFERRED OR INCORPORATED IN ANY OTHER PROJECT IN ANY MANNER WITHOUT THE EXPRESS WRITTEN CONSENT OF SAMTEC, INC.



520 PARK EAST BLVD, NEW ALBANY, IN 47150
PHONE: 812-944-6733 FAX: 812-948-5047
e-Mail info@SAMTEC.com code 55322

DO NOT SCALE DRAWING

DESCRIPTION:
GANGED SPM SURFACE MOUNT, .140 PITCH
DWG. NO.

GPPB-XX-1-XX-XX-ST-SM-1N

SHEET SCALE: 6:1

BY: MATT M. 2/10/2022 SHEET 4 OF 4