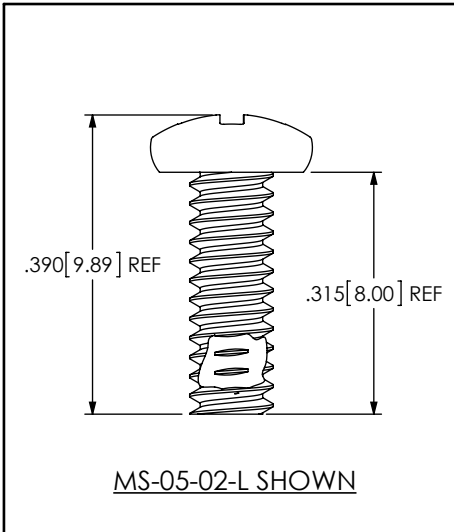
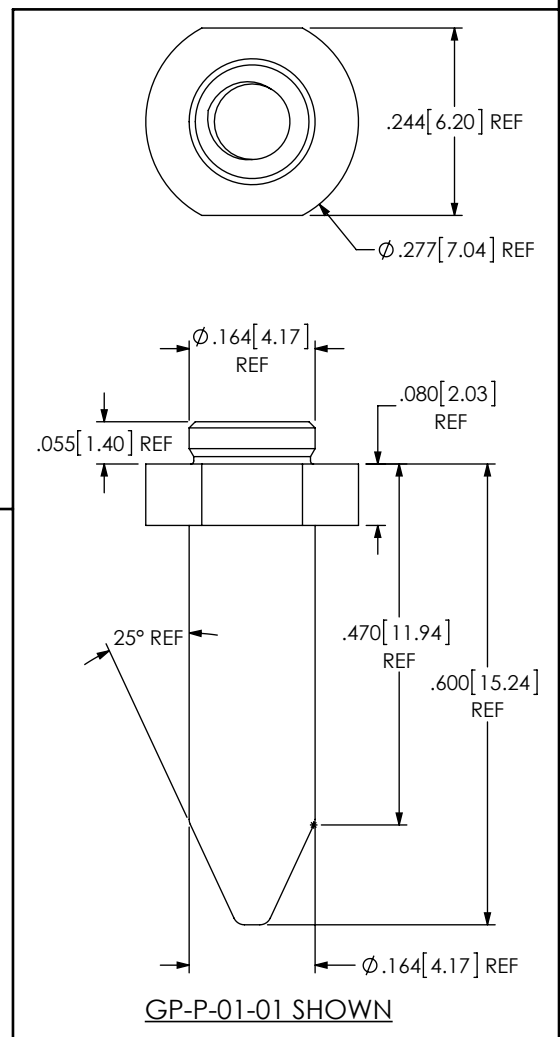
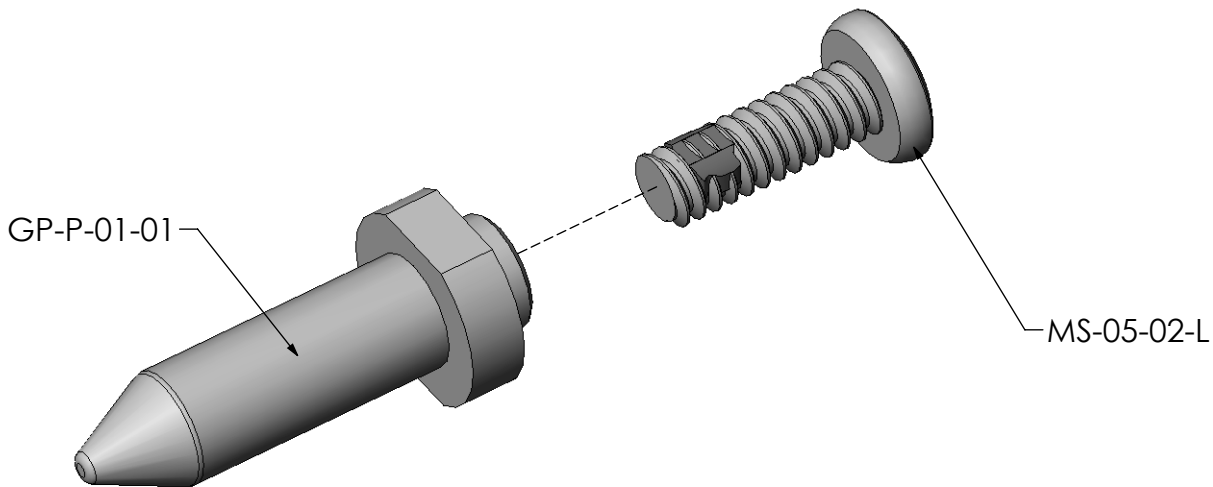


DESIGNED & DIMENSIONED
IN INCHES[MILLIMETERS]

DO NOT
SCALE FROM
THIS PRINT

GPPK-01-XX
 PLUG
 LEAD STYLE
 -01: .600 (FOR SEAM)
 THREADING
 -01: M3 x 0.5



NOTES:

1. PARTS TO BE PACKAGED IN BAGS AS A KIT.
2. KIT TO INCLUDE ONE GP-P-01-01 AND ONE MS-05-02-L.

UNLESS OTHERWISE SPECIFIED,
DIMENSIONS ARE IN INCHES.
TOLERANCES ARE:
DECIMALS ANGLES
.XX: ±.01 [.3] 2°
.XXX: ±.005 [.13]
.XXXX: ±.0020 [.051]

PROPRIETARY NOTE
 THIS DOCUMENT CONTAINS INFORMATION
 CONFIDENTIAL AND PROPRIETARY TO
 SAMTEC, INC. AND SHALL NOT BE REPRODUCED
 OR TRANSFERRED TO OTHER DOCUMENTS OR
 DISCLOSED TO OTHERS OR USED FOR ANY
 PURPOSE OTHER THAN THAT WHICH IT WAS
 OBTAINED WITHOUT THE EXPRESSED WRITTEN
 CONSENT OF SAMTEC, INC.



520 PARK EAST BLVD, NEW ALBANY, IN 47150
 PHONE: 812-944-6733 FAX: 812-948-5047
 e-Mail: info@SAMTEC.com code 55322

MATERIAL: DO NOT SCALE DRAWING SHEET SCALE: 2:1
 GUIDE POST: SUS-301
 SCREW: 303 STAINLESS STEEL

DESCRIPTION: SEAM - GPK OPTION KIT

DWG. NO.: GPPK-01-XX

BY: VICKY Z 12/23/2010 SHEET 1 OF 1