

DO NOT  
SCALE FROM  
THIS PRINT

GPSO-XXXX-XX-XX-X

BOARD STACK HEIGHT  
SEE TABLE 1

KIT OPTION

-N: NO HARDWARE  
(STANDOFF ONLY; SEE TABLE 2, SHT 2)  
(LEAVE BLANK FOR KIT)

MATERIAL

-01: 303 STAINLESS STEEL W/ MIL-C-13924  
BLACK OXIDE FINISH

LEAD STYLE

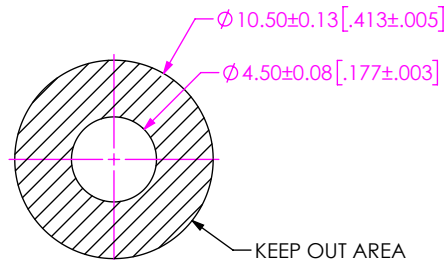
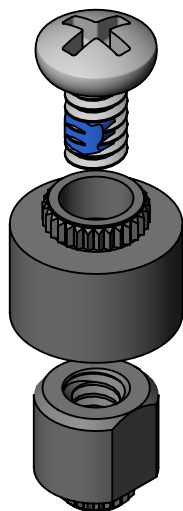
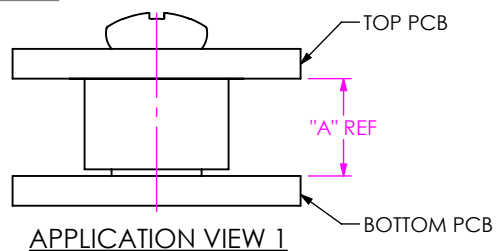
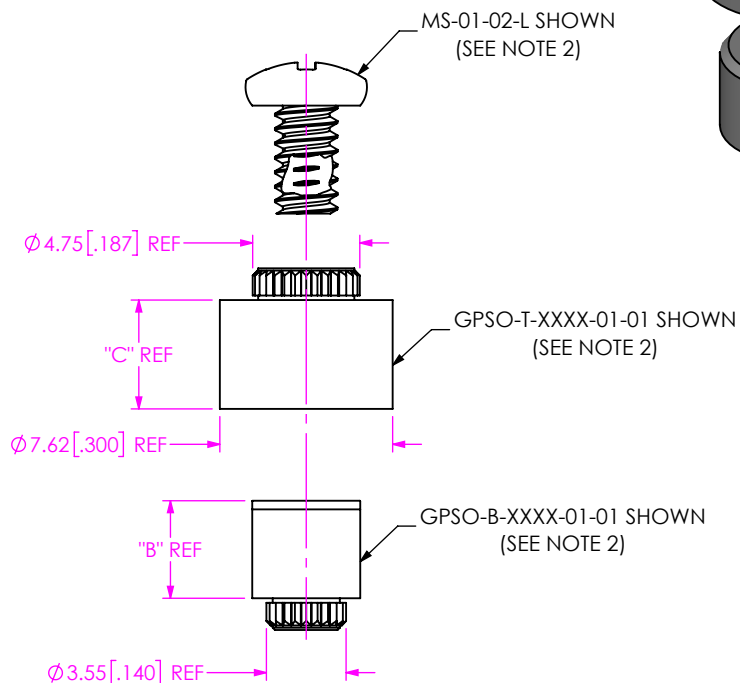
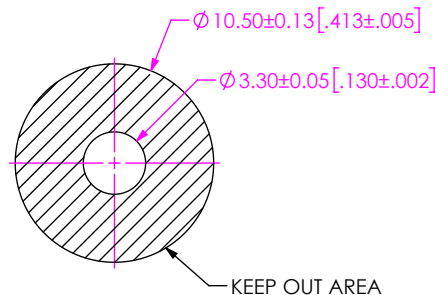
-01: PRESS-IN  
-02: PRESS-IN WITH NUTRECOMMENDED BOARD  
CUTOUT (PRESS-IN) FOR TOP PCBFIG 1  
GPSO-XXXX-01-01 SHOWNRECOMMENDED BOARD  
CUTOUT (PRESS-IN) FOR BOTTOM PCB

TABLE 1

BOARD STACK HEIGHT	"A"	"B"	"C"
-0400	4.00 [.157]	3.15 [.124]	3.65 [.144]
-0500	5.00 [.197]	4.15 [.163]	4.65 [.183]
-0515	5.15 [.203]	4.30 [.169]	4.80 [.189]
-0700	7.00 [.276]	6.15 [.242]	6.65 [.262]
-0715	7.15 [.281]	6.30 [.248]	6.80 [.268]
-0800	8.00 [.315]	7.15 [.281]	7.65 [.301]
-0815	8.15 [.321]	7.30 [.287]	7.80 [.307]
-0865	8.65 [.341]	7.80 [.307]	8.30 [.327]
-0900	9.00 [.354]	8.15 [.321]	8.65 [.341]
-0915	9.15 [.360]	8.30 [.327]	8.80 [.346]
-1000	10.00 [.394]	9.15 [.360]	9.65 [.380]
-1015	10.15 [.400]	9.30 [.366]	9.80 [.386]
-1115	11.15 [.439]	10.30 [.406]	10.80 [.425]
-1200	12.00 [.472]	11.15 [.439]	11.65 [.459]
-1215	12.15 [.478]	11.30 [.445]	11.80 [.465]
-1315	13.15 [.518]	12.30 [.484]	12.80 [.504]
-1415	14.15 [.557]	13.30 [.524]	13.80 [.543]
-1515	15.15 [.596]	14.30 [.563]	14.80 [.583]
-1524	15.24 [.600]	14.39 [.567]	14.89 [.586]
-1615	16.15 [.636]	15.30 [.602]	15.80 [.622]
* -1715	17.15 [.675]	16.30 [.642]	16.80 [.661]
* -1890	18.90 [.744]	18.05 [.711]	18.55 [.730]
* -1915	19.15 [.754]	18.30 [.720]	18.80 [.740]
* -2015	20.15 [.793]	19.30 [.760]	19.80 [.780]
* -2215	22.15 [.872]	21.30 [.839]	21.80 [.858]
* -2515	25.15 [.990]	24.30 [.957]	24.80 [.976]
* -3015	30.15 [1.187]	29.30 [1.154]	29.80 [1.173]

(\* = NOT TOOLED)

## NOTES:

1. STANDOFFS TO BE USED WITH 1.57[.062] MIN THICK BOARDS THICK BOARDS. THREADED OPTIONS PCB MAX THICKNESS OF 3.16[.124]
2. REFERENCE "KITTING ITEMS IN BAGS" IN THE SAMTEC PACKAGING MANUAL FOR PACKAGING INSTRUCTIONS.
3. STANDOFFS ARE DESIGNED 0.15MM LONGER THAN FULLY MATED CONNECTOR STACK HEIGHT TO ALLOW FOR PROCESSING VARIABLES.
4. TORQUE TO 2.5 – 3.5 IN\* LBS TO SECURE FASTENER IN A STATIC ENVIRONMENT ASSUMING RECOMMENDED BOARD TO BOARD DISTANCES ARE ACHIEVED WITHOUT DAMAGE TO THE PCB, HARDWARE OR OTHER COMPONENTS.
5. THREAD CLASS UNC 2A AND UNC 2B IS RECOMMENDED FOR CUSTOMER SUPPLIED HARDWARE.

## \* PROPRIETARY NOTE \*

THIS DOCUMENT CONTAINS CONFIDENTIAL AND PROPRIETARY INFORMATION AND ALL DESIGN, MANUFACTURING, REPRODUCTION, USE, PATENT RIGHTS AND SALES RIGHTS ARE EXPRESSLY RESERVED BY SAMTEC, INC. THIS DOCUMENT SHALL NOT BE DISCLOSED, IN WHOLE OR PART, TO ANY UNAUTHORIZED PERSON OR ENTITY NOR REPRODUCED, TRANSFERRED OR INCORPORATED IN ANY OTHER PROJECT IN ANY MANNER WITHOUT THE EXPRESS WRITTEN CONSENT OF SAMTEC, INC.

DO NOT SCALE DRAWING  
SHEET SCALE: 3:1  
MATERIAL:  
SEE PART CALL OUT FOR MATERIAL

**samtec**

520 PARK EAST BLVD, NEW ALBANY, IN 47150  
PHONE: 812-944-6733 FAX: 812-948-5047  
e-Mail: info@SAMTEC.com code 55322

DESCRIPTION:  
BOARD TO BOARD GUIDEPOST STANDOFF  
DWG. NO.

GPSO-XXXX-XX-XX-X

BY: JERRY SU 09/08/2020 SHEET 1 OF 2

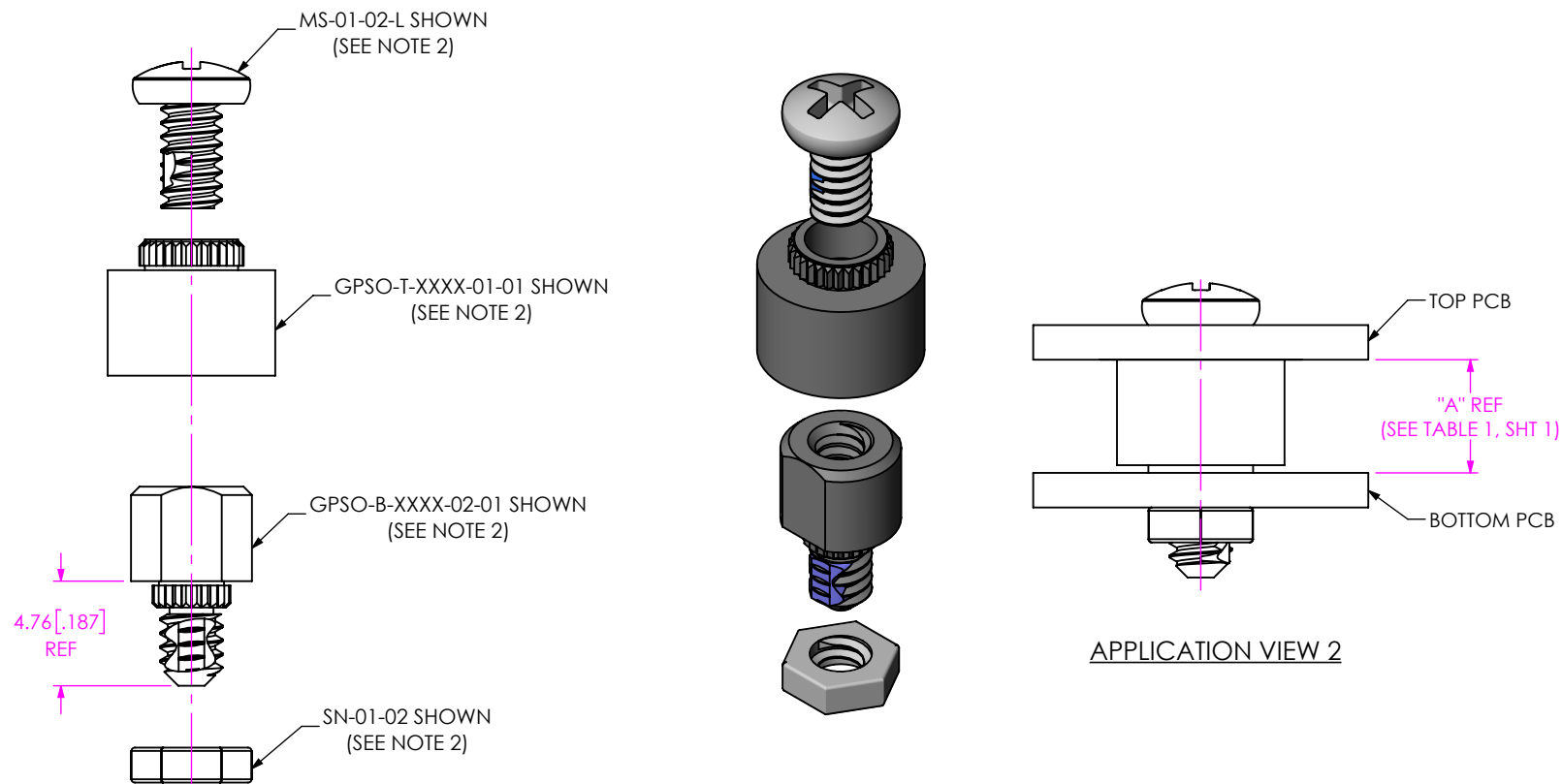


FIG 2  
GPSO-XXXX-02-01 SHOWN  
(DIFFERENT AS SHOWN, OTHERWISE SAME AS FIG 1)

TABLE 2 - BOM			
FINISHED GOOD	COMPONENT	DESCRIPTION	QTY
GPSO-XXXX-01-XX-N	GPSO-T-XXXX-01-XX	TOP HOUSING	1
	GPSO-B-XXXX-01-XX	BOTTOM HOUSING	1
GPSO-XXXX-01-XX	GPSO-T-XXXX-01-XX	TOP HOUSING	1
	GPSO-B-XXXX-01-XX	BOTTOM HOUSING	1
GPSO-XXXX-02-XX-N	MS-01-XX-L	SCREW	1
	GPSO-T-XXXX-01-XX	TOP HOUSING	1
GPSO-XXXX-02-XX	GPSO-B-XXXX-02-XX	BOTTOM HOUSING	1
	GPSO-T-XXXX-01-XX	TOP HOUSING	1
	GPSO-B-XXXX-02-XX	BOTTOM HOUSING	1
	MS-01-XX-L	SCREW	1
	SN-01-XX	NUT	1

<p>• PROPRIETARY NOTE •</p> <p>THIS DOCUMENT CONTAINS CONFIDENTIAL AND PROPRIETARY INFORMATION AND ALL DESIGN, MANUFACTURING, REPRODUCTION, USE, PATENT RIGHTS AND SALES RIGHTS ARE EXPRESSLY RESERVED BY SAMTEC, INC. THIS DOCUMENT SHALL NOT BE DISCLOSED, IN WHOLE OR PART, TO ANY UNAUTHORIZED PERSON OR ENTITY NOR REPRODUCED, TRANSFERRED OR INCORPORATED IN ANY OTHER PROJECT IN ANY MANNER WITHOUT THE EXPRESS WRITTEN CONSENT OF SAMTEC, INC.</p>	<p>520 PARK EAST BLVD, NEW ALBANY, IN 47150 PHONE: 812-944-6733 FAX: 812-948-5047 e-Mail: info@SAMTEC.com code 55322</p>
DO NOT SCALE DRAWING	DESCRIPTION: BOARD TO BOARD GUIDEPOST STANDOFF
SHEET SCALE: 1:2	DWG. NO. GPSO-XXXX-XX-XX-X
BY: JERRY SU 09/08/2020	SHEET 2 OF 2