

THIS PRODUCT MANUFACTURED WITH LEAD-FREE PROCESSING

DESIGNED & DIMENSIONED IN MILLIMETERS [INCHES]

IJ5H-XX-XXXX-X-X-XXXXX

DO NOT SCALE FROM THIS PRINT

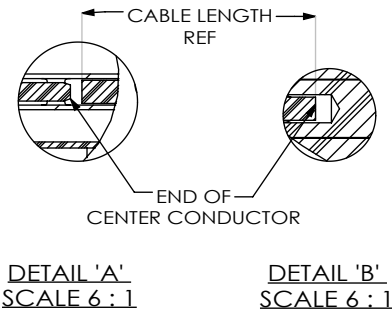


TABLE 2

END 2 OPTION	"C"
-01SP	15.5 [0.61]
-02SP	17.2 [0.68]
-03SP	14.0 [0.55]
-07SP	17.5 [0.69]
-01RP	11.9 [0.47]
-01BJ	18.2 [0.72]
-01BR	18.7 [0.74]
-01SB	18.2 [0.72]
-01SR	18.7 [0.74]
-02RP	11.1 [0.44]
-03RP	10.9 [0.43]

No OF POSITIONS
 -01: 1 POSITION
 -02: 2 POSITIONS
 -04: 4 POSITIONS
 -06: 6 POSITIONS
 -08: 8 POSITIONS
 (SEE TABLE 1)

END 2 PLATING OPTION
 1: GOLD ALL COMPONENTS
 2: GOLD/NICKEL COMBINATION

ASSEMBLY LENGTH
 -0300 TO -9999 (MILLIMETERS) (SEE NOTE 6)
 (SEE CABLE LENGTH FORMULA FOR PREP LENGTH)

END 2 OPTION
 -01SP: SMA-P-C-X-ST-CA1 (SEE SHEET 2)
 -02SP: MCX-P-C-XX-ST-CA1 (SEE SHEET 2)
 -03SP: MMCX-P-X-XX-ST-CA1 (SEE SHEET 2)
 -07SP: SMB5-P-C-XX-ST-CA1 (SEE SHEET 2)
 -01RP: SMA-P-C-X-RA-CA1 (SEE SHEET 2)
 -01BJ: SMA-J-C-X-ST-BH1 (SEE SHEET 3)
 -01BR: SMA-J-C-X-ST-BR1 (SEE SHEET 3)
 -01SB: SMA-J-C-X-ST-SB1 (SEE SHEET 3)
 -01SR: SMA-J-C-X-ST-SR1 (SEE SHEET 3)
 -02RP: MCX-P-C-XX-RA-CA1 (SEE SHEET 3)
 -03RP: MMCX-P-C-X-RA-CA1 (SEE SHEET 3)
 (SEE TABLE 2)

END 1 PLATING OPTION
 -S: 30µ" GOLD
CABLE TYPE
 -2: CCA-316

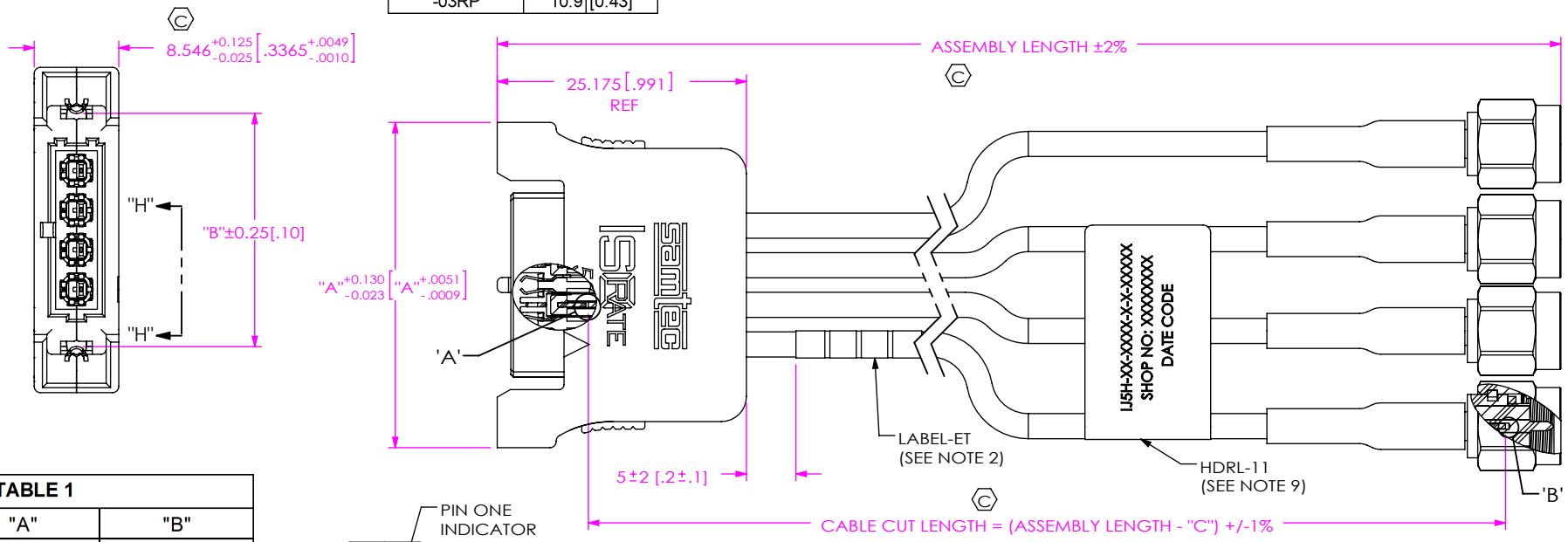


TABLE 1

No. OF POS	"A"	"B"
-01	20.87 [0.82]	11.57 [0.46]
-02	24.87 [0.98]	15.57 [0.61]
-04	32.87 [1.29]	23.57 [0.93]
-06	40.87 [1.61]	31.57 [1.24]
-08	48.87 [1.92]	39.57 [1.56]

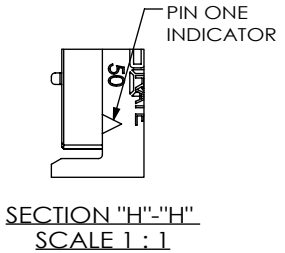
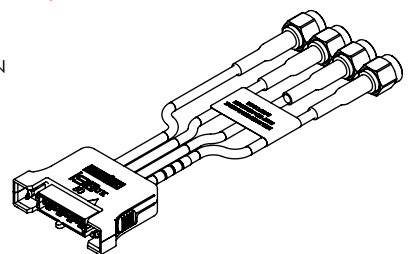


FIG 1
IJ5H-04-XXXX-S-2-01SPX SHOWN



NOTES:

1. REPRESENTS A CRITICAL DIMENSION.
2. ALL ASSEMBLIES TO BE 100% ELECTRICALLY TESTED FOR SHORTS AND OPENS.
3. ALL ASSEMBLIES TO BE 100% HI-POT TESTED AT 600V.
4. PACKAGE ASSEMBLIES IN ANTI-STATIC OR STATIC DISSIPATIVE BAGS.
5. NOTE DELETED.
6. CABLE LENGTH GREATER THAN 1000mm [39.4"] IS A VALID PART NUMBER BUT IS NOT SUPPORTED BY S.I. TEST DATA.
7. NOTE DELETED.
8. MEASURE OVER THERMO WELD FEATURES.
9. HDRL LABEL TO BE FLAGGED AROUND SINGLE WIRE AND TO BE CENTERED ON CABLE ASM AS SHOWN.
10. FOR BULKHEAD APPLICATIONS, THE END USER SHOULD TIGHTEN THE THREADED NUT TO 15 IN-LB MINIMUM.

UNLESS OTHERWISE SPECIFIED, DIMENSIONS ARE IN MILLIMETERS [INCHES].

TOLERANCES ARE:
 DECIMALS ANGLES
 X.X: ±0.3 [01] 2°
 X.XX: ±0.13 [005]
 X.XXX: ±0.051 [0020]

PROPRIETARY NOTE
 THIS DOCUMENT CONTAINS CONFIDENTIAL AND PROPRIETARY INFORMATION AND ALL DESIGN, MANUFACTURING, REPRODUCTION, USE, PATENT RIGHTS AND SALES RIGHTS ARE EXPRESSLY RESERVED BY SAMTEC, INC. THIS DOCUMENT SHALL NOT BE DISCLOSED, IN WHOLE OR PART, TO ANY UNAUTHORIZED PERSON OR ENTITY NOR REPRODUCED, TRANSFERRED OR INCORPORATED IN ANY OTHER PROJECT IN ANY MANNER WITHOUT THE EXPRESS WRITTEN CONSENT OF SAMTEC, INC.

MATERIAL: DO NOT SCALE DRAWING
 COVERS: THERMOPLASTIC, COLOR: BLACK
 SHIELD: COPPER ALLOY
 CONTACT: COPPER ALLOY
 DIELECTRIC: LCP, COLOR: BLACK

SHEET SCALE: 3:2

520 PARK EAST BLVD. NEW ALBANY, IN 47150
 PHONE: 812-944-6733 FAX: 812-948-5047
 e-Mail: info@SAMTEC.com code 55322

DESCRIPTION:
 CABLE ASSEMBLY, IJ5 HYBRID

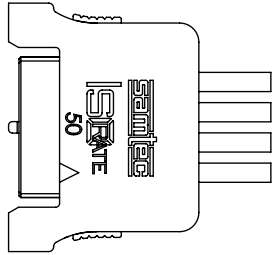
DWG. NO.
 IJ5H-XX-XXXX-X-X-XXXXX

BY: L WOOLLEY 7/22/2010 SHEET 1 OF 3

END 1

(IJ5C CONNECTOR)

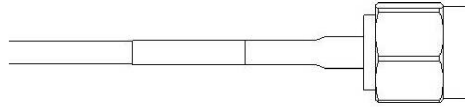
(USE DRAWING No. IJ5C-XX-XXXX-X-X-XXX-X-XX FOR ASSEMBLY INSTRUCTIONS)



NOTE: ALL CRITICAL DIMENSIONS ON IJ5C-XX-XXXX-X-X-XXX-X-XX THAT APPLY MUST BE VERIFIED.

-01SP
(STRAIGHT PLUG)

(USE DRAWING No. SMA-P-C-X-ST-CA1 FOR ASSEMBLY INSTRUCTIONS)

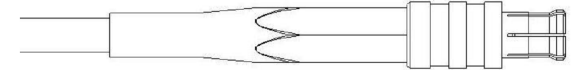


PLATING
1: 30µ" MIN. GOLD CENTER CONTACT
3µ" MIN. GOLD OUTER CONTACT
3µ" MIN. GOLD REMAINING METAL PARTS
(END CONNECTOR P/N: SMA-P-C-H-ST-CA1)

NOTE: ALL CRITICAL DIMENSIONS ON SMA-P-C-X-ST-CA1 THAT APPLY MUST BE VERIFIED.

-02SP
(STRAIGHT PLUG)

(USE DRAWING No. MCX-P-C-XX-ST-CA1 FOR ASSEMBLY INSTRUCTIONS)



PLATING OPTIONS
1: 30µ" MIN. GOLD CENTER CONTACT
3µ" MIN. GOLD OUTER CONTACT
3µ" MIN. GOLD REMAINING METAL PARTS
(END CONNECTOR P/N: MCX-P-C-H-ST-CA1)
2: 30µ" MIN. GOLD CENTER CONTACT
3µ" MIN. GOLD OUTER CONTACT
100µ" MIN. NICKEL REMAINING METAL PARTS
(END CONNECTOR P/N: MCX-P-C-HN-ST-CA1)

NOTE: ALL CRITICAL DIMENSIONS ON MCX-P-C-XX-ST-CA1 THAT APPLY MUST BE VERIFIED.

-03SP
(STRAIGHT PLUG)

(USE DRAWING No. MMCX-P-C-XX-ST-CA1 FOR ASSEMBLY INSTRUCTIONS)



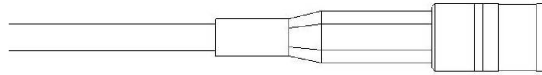
PLATING OPTIONS
1: 30µ" MIN. GOLD CENTER CONTACT
3µ" MIN. GOLD OUTER CONTACT
3µ" MIN. GOLD REMAINING METAL PARTS
(END CONNECTOR P/N: MMCX-P-C-H-ST-CA1)

2: 30µ" MIN. GOLD CENTER CONTACT
3µ" MIN. GOLD OUTER CONTACT
100µ" MIN. NICKEL REMAINING METAL PARTS
(END CONNECTOR P/N: MMCX-P-C-HN-ST-CA1)

NOTE: ALL CRITICAL DIMENSIONS ON MMCX-P-C-XX-ST-CA1 THAT APPLY MUST BE VERIFIED.

-07SP
(STRAIGHT PLUG)

(USE DRAWING No. SMB5-P-C-XX-ST-CA1 FOR ASSEMBLY INSTRUCTIONS)



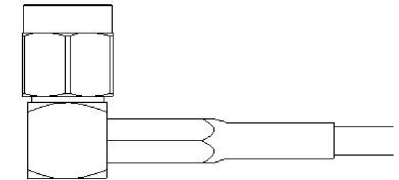
PLATING OPTIONS
1: 30µ" MIN. GOLD CENTER CONTACT
3µ" MIN. GOLD OUTER CONTACT
3µ" MIN. GOLD REMAINING METAL PARTS
(END CONNECTOR P/N: SMB5-P-C-H-ST-CA1)

2: 30µ" MIN. GOLD CENTER CONTACT
3µ" MIN. GOLD OUTER CONTACT
100µ" MIN. NICKEL REMAINING METAL PARTS
(END CONNECTOR P/N: SMB5-P-C-HN-ST-CA1)

NOTE: ALL CRITICAL DIMENSIONS ON SMB5-P-C-XX-ST-CA1 THAT APPLY MUST BE VERIFIED.

-01RP
(RIGHT ANGLE PLUG)

(USE DRAWING No. SMA-P-C-X-RA-CA1 FOR ASSEMBLY INSTRUCTIONS)



PLATING
1: 30µ" MIN. GOLD CENTER CONTACT
3µ" MIN. GOLD OUTER CONTACT
3µ" MIN. GOLD REMAINING METAL PARTS
(END CONNECTOR P/N: SMA-P-C-H-RA-CA1)

NOTE: ALL CRITICAL DIMENSIONS ON SMA-P-C-X-RA-CA1 THAT APPLY MUST BE VERIFIED.

PROPRIETARY NOTE

THIS DOCUMENT CONTAINS CONFIDENTIAL AND PROPRIETARY INFORMATION AND ALL DESIGN, MANUFACTURING, REPRODUCTION, USE, PATENT RIGHTS AND SALES RIGHTS ARE EXPRESSLY RESERVED BY SAMTEC, INC. THIS DOCUMENT SHALL NOT BE DISCLOSED, IN WHOLE OR PART, TO ANY UNAUTHORIZED PERSON OR ENTITY NOR REPRODUCED, TRANSFERRED OR INCORPORATED IN ANY OTHER PROJECT IN ANY MANNER WITHOUT THE EXPRESS WRITTEN CONSENT OF SAMTEC, INC.

DO NOT SCALE DRAWING

SHEET SCALE: 1:1



520 PARK EAST BLVD, NEW ALBANY, IN 47150
PHONE: 812-944-6733 FAX: 812-948-5047
e-Mail info@SAMTEC.com code 55322

DESCRIPTION: CABLE ASSEMBLY, IJ5 HYBRID

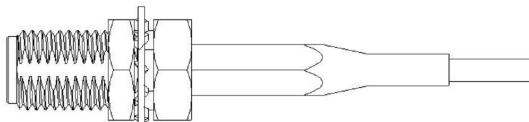
DWG. NO. IJ5H-XX-XXXX-X-X-XXXXX

BY: L WOOLLEY 7/22/2010 SHEET 2 OF 3

REVISION K

-01BJ
(STRAIGHT BULKHEAD JACK)
(SEE NOTE 10)

(USE DRAWING No. SMA-J-C-X-ST-BH1
FOR ASSEMBLY INSTRUCTIONS)

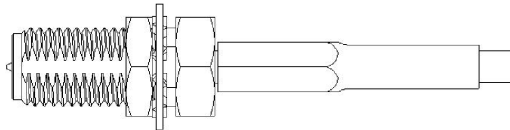


PLATING
1: 30µ" MIN. GOLD CENTER CONTACT
3µ" MIN. GOLD OUTER CONTACT
3µ" MIN. GOLD REMAINING METAL PARTS
(END CONNECTOR P/N: SMA-J-C-H-ST-BH1)

NOTE: ALL CRITICAL DIMENSIONS ON SMA-J-C-X-ST-BH1
THAT APPLY MUST BE VERIFIED.

-01BR (REVERSED POLARITY)
(STRAIGHT BULKHEAD JACK)
(SEE NOTE 10)

(USE DRAWING No. SMA-J-C-X-ST-BR1
FOR ASSEMBLY INSTRUCTIONS)

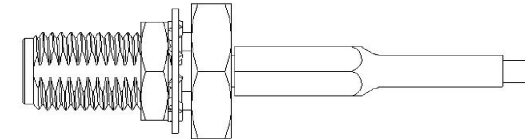


PLATING
1: 30µ" MIN. GOLD CENTER CONTACT
3µ" MIN. GOLD OUTER CONTACT
3µ" MIN. GOLD REMAINING METAL PARTS
(END CONNECTOR P/N: SMA-J-C-H-ST-BR1)

NOTE: ALL CRITICAL DIMENSIONS ON SMA-J-C-X-ST-BR1
THAT APPLY MUST BE VERIFIED.

-01SB
(SEALED STRAIGHT BULKHEAD JACK)
(SEE NOTE 10)

(USE DRAWING No. SMA-J-C-X-ST-SB1
FOR ASSEMBLY INSTRUCTIONS)

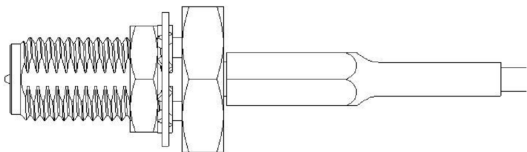


PLATING
1: 30µ" MIN. GOLD CENTER CONTACT
3µ" MIN. GOLD OUTER CONTACT
3µ" MIN. GOLD REMAINING METAL PARTS
(END CONNECTOR P/N: SMA-J-C-H-ST-SB1)

NOTE: ALL CRITICAL DIMENSIONS ON SMA-J-C-X-ST-SB1
THAT APPLY MUST BE VERIFIED.

-01SR (REVERSED POLARITY)
(SEALED STRAIGHT BULKHEAD JACK)
(SEE NOTE 10)

(USE DRAWING No. SMA-J-C-X-ST-SR1
FOR ASSEMBLY INSTRUCTIONS)

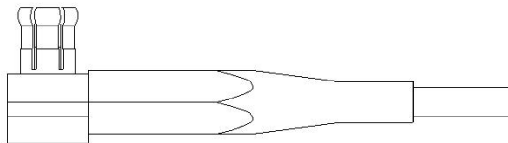


PLATING
1: 30µ" MIN. GOLD CENTER CONTACT
3µ" MIN. GOLD OUTER CONTACT
3µ" MIN. GOLD REMAINING METAL PARTS
(END CONNECTOR P/N: SMA-J-C-H-ST-SR1)

NOTE: ALL CRITICAL DIMENSIONS ON SMA-J-C-X-ST-SR1
THAT APPLY MUST BE VERIFIED.

-02RP
(RIGHT ANGLE PLUG)

(USE DRAWING No. MCX-P-C-XX-RA-CA1
FOR ASSEMBLY INSTRUCTIONS)



PLATING OPTIONS
1: 30µ" MIN. GOLD CENTER CONTACT
3µ" MIN. GOLD OUTER CONTACT
3µ" MIN. GOLD REMAINING METAL PARTS
(END CONNECTOR P/N: MCX-P-C-H-RA-CA1)

2: 30µ" MIN. GOLD CENTER CONTACT
3µ" MIN. GOLD OUTER CONTACT
100µ" MIN. NICKEL REMAINING METAL PARTS
(END CONNECTOR P/N: MCX-P-C-HN-RA-CA1)

NOTE: ALL CRITICAL DIMENSIONS ON MCX-P-C-XX-RA-CA1
THAT APPLY MUST BE VERIFIED.

-03RP
(RIGHT ANGLE PLUG)

(USE DRAWING No. MMCX-P-C-X-RA-CA1
FOR ASSEMBLY INSTRUCTIONS)



PLATING
1: 30µ" MIN. GOLD CENTER CONTACT
3µ" MIN. GOLD OUTER CONTACT
3µ" MIN. GOLD REMAINING METAL PARTS
(END CONNECTOR P/N: MMCX-P-C-H-RA-CA1)

NOTE: ALL CRITICAL DIMENSIONS ON MMCX-P-C-X-RA-CA1
THAT APPLY MUST BE VERIFIED.

PROPRIETARY NOTE

THIS DOCUMENT CONTAINS CONFIDENTIAL AND PROPRIETARY INFORMATION AND ALL DESIGN, MANUFACTURING, REPRODUCTION, USE, PATENT RIGHTS AND SALES RIGHTS ARE EXPRESSLY RESERVED BY SAMTEC, INC. THIS DOCUMENT SHALL NOT BE DISCLOSED, IN WHOLE OR PART, TO ANY UNAUTHORIZED PERSON OR ENTITY NOR REPRODUCED, TRANSFERRED OR INCORPORATED IN ANY OTHER PROJECT IN ANY MANNER WITHOUT THE EXPRESS WRITTEN CONSENT OF SAMTEC, INC.



520 PARK EAST BLVD, NEW ALBANY, IN 47150
PHONE: 812-944-6733 FAX: 812-948-5047
e-Mail info@SAMTEC.com code 55322

DO NOT SCALE DRAWING

SHEET SCALE: 1:1

DESCRIPTION:
CABLE ASSEMBLY, IJ5 HYBRID

DWG. NO.
IJ5H-XX-XXXX-X-X-XXXXX

BY: L WOOLLEY 7/22/2010 SHEET 3 OF 3