

FIG.1  
(FOOTPRINT FOR 1 ROW x 4 POSITION SHOWN)

**TABLE 1**

No. POS / ROWS		"A"	"B"	"C"
*-01	STD	N/A	0.182	0.229
	-L		0.257	0.319
-02	STD	0.1575	0.182	0.229
	-L		0.257	0.319
-04	STD	0.4725	0.182	0.229
	-L		0.257	0.319
-06	STD	0.7875	0.182	0.229
	-L		0.257	0.319
-08	STD	1.1025	0.182	0.229
	-L		0.257	0.319
*-10	STD	1.4175	0.182	0.229
	-L		0.257	0.319

(\* = NOT TOOLED)

NOTES:  
1. CONNECTOR ENVELOPE DIMENSIONS. OTHER COMPONENTS PLACED ON PCB SHALL AVOID THIS ZONE.

**PROPRIETARY NOTE**  
THIS DOCUMENT CONTAINS INFORMATION CONFIDENTIAL AND PROPRIETARY TO SAMTEC, INC. AND SHALL NOT BE REPRODUCED OR TRANSFERRED TO OTHER DOCUMENTS OR DISCLOSED TO OTHERS OR USED FOR ANY PURPOSE OTHER THAN THAT WHICH IT WAS OBTAINED WITHOUT THE EXPRESSED WRITTEN CONSENT OF SAMTEC, INC.

**samtec**  
520 PARK EAST BLVD, NEW ALBANY, IN 47150  
PHONE: 812-944-6733 FAX: 812-948-5047  
fromparent+e-Mail: info@SAMTEC.com

- NOTES:  
 1. STENCIL TO BE .0050[.127] THICK  
 2. TO ACHIEVE THE DESIRED SOLDER VOLUME, WE RECOMMEND THAT SOLDER PASTE BE PRINTED ON BOTH SIDES OF THE PCB USING THE LAYOUTS IN FIG. 2  
 3. SINGLE SIDE SOLDER PRINTING MAY BE POSSIBLE BY ADJUSTING PRINTER PROCESS VARIABLES, CONTACT SAMTEC'S INTERCONNECT PROCESSING GROUP AT (800) SAMTEC9 OR IPG@SAMTEC.COM FOR MORE INFORMATION.

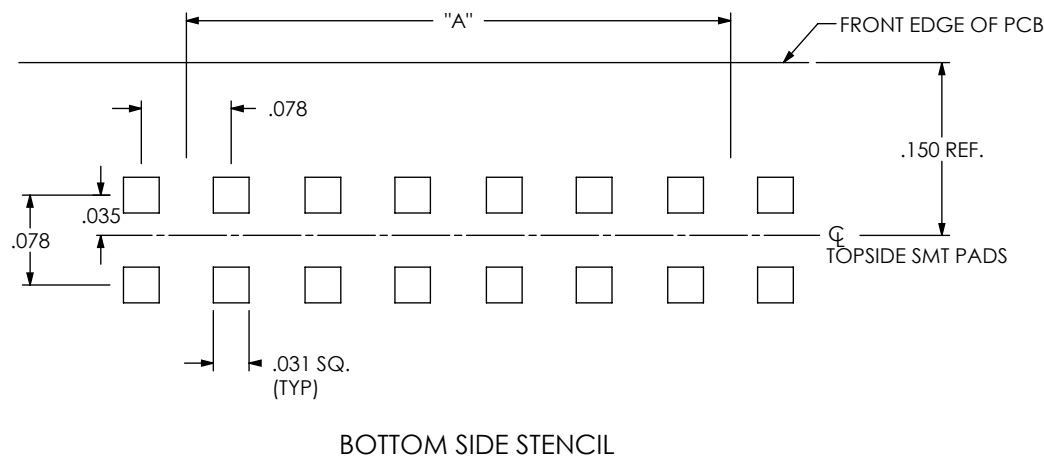
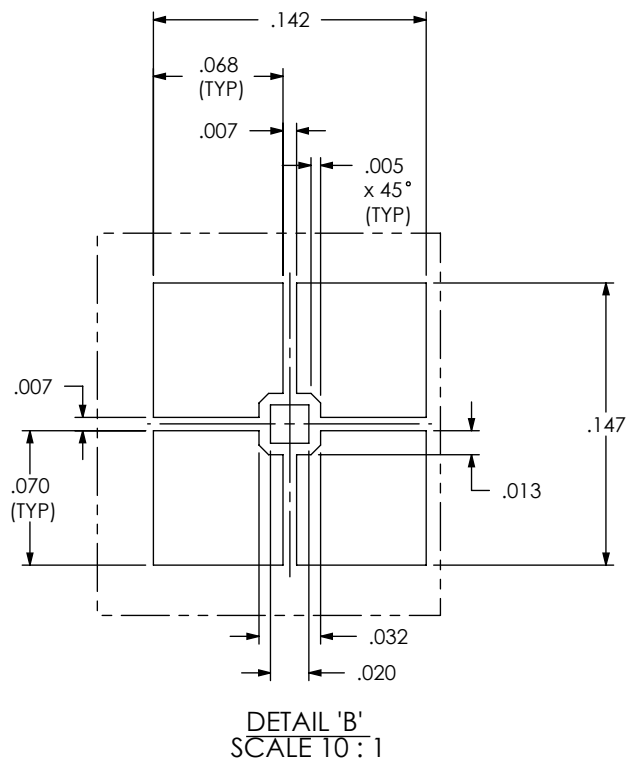
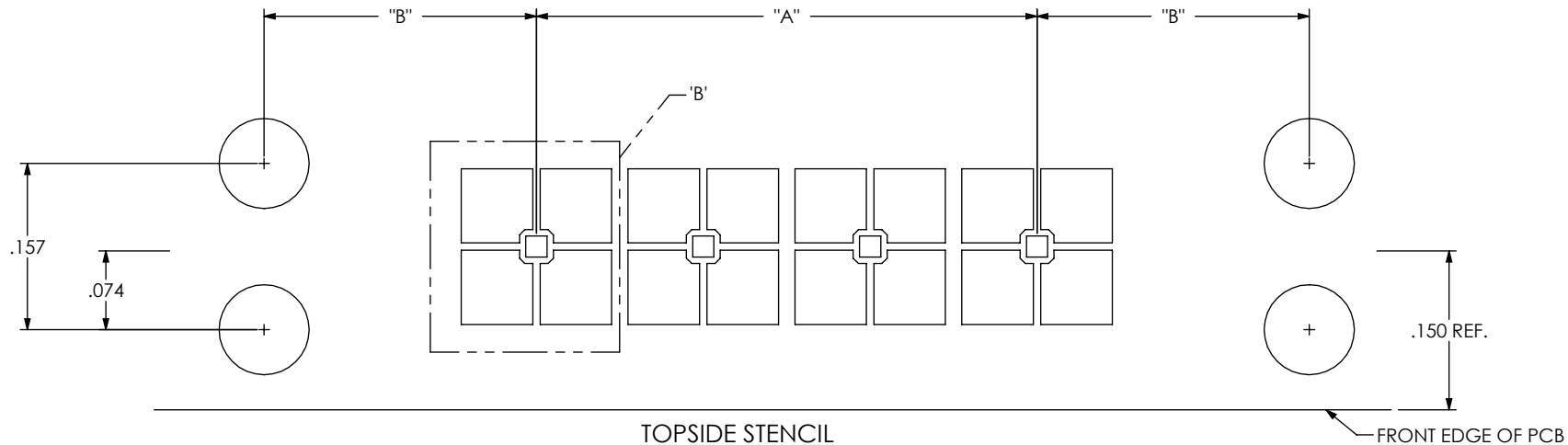


FIG.2  
(STENCIL FOR 1 ROW X 4 POSITION SHOWN)

**PROPRIETARY NOTE**  
 THIS DOCUMENT CONTAINS INFORMATION CONFIDENTIAL AND PROPRIETARY TO SAMTEC, INC. AND SHALL NOT BE REPRODUCED OR TRANSFERRED TO OTHER DOCUMENTS OR DISCLOSED TO OTHERS OR USED FOR ANY PURPOSE OTHER THAN THAT WHICH IT WAS OBTAINED WITHOUT THE EXPRESSED WRITTEN CONSENT OF SAMTEC, INC.



520 PARK EAST BLVD, NEW ALBANY, IN 47150  
 PHONE: 812-944-6733 FAX: 812-948-5047  
 fromparent+e-Mail: info@SAMTEC.com