

DO NOT SCALE FROM THIS PRINT

**Pb** THIS PRODUCT MANUFACTURED WITH LEAD-FREE PROCESSING

LL043-XXXX-XXXXXX-XXXX-X-XX

CABLE CALLOUT  
LL043: LL043 CABLE

END 1 CONNECTOR  
(SEE TABLE 2, SHT 2)

END 2 CONNECTOR  
(SEE TABLE 2, SHT 2)

OVERALL ASSEMBLY LENGTH (OAL)  
XXXX (MILLIMETERS)  
(0100 MIN)  
(SEE NOTE 7)

NO. OF PHASE MATCHING CABLES  
-XX: (XX CABLE FOR THIS PART NUMBER)  
(XX CAN BE 02 TO 16)  
-BLANK: 1 CABLE FOR THIS PART NUMBER,  
ONLY AVAILABLE WITH NO  
PHASE MATCHING OPTION

PHASE MATCHING SPEC (RANGE)  
-1: 1 PICO-SECOND  
-2: 2 PICO-SECONDS  
-5: 5 PICO-SECONDS  
-BLANK: NO PHASE MATCHING

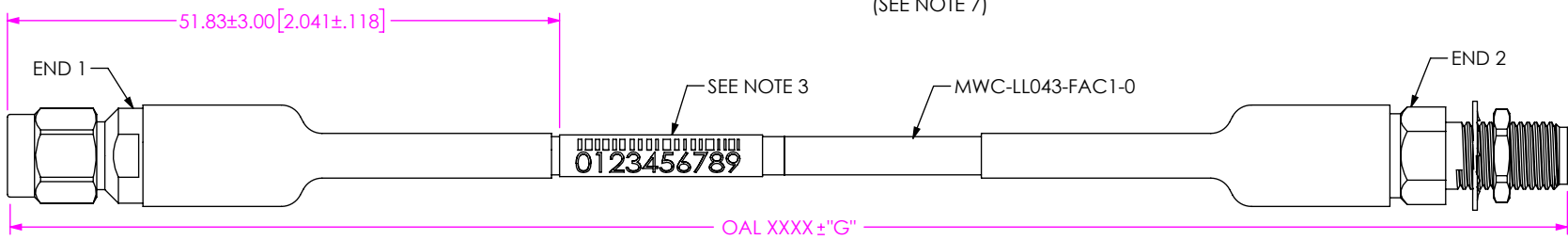


FIG 1  
LL043-92SP-92BJ-XXXX SHOWN  
(PROTECTIVE CAPS NOT SHOWN FOR CLARITY)

TABLE 1	
OVERALL LENGTH	"G"
0100-0300 [3.94-11.81]	+5.0 [.20] / -0.0 [.00]
0301-1500 [11.85-59.06]	+12.0 [.47] / -0.0 [.00]
1501-3000 [59.09-118.11]	+25.0 [.98] / -0.0 [.00]
3001-7500 [118.15-295.28]	+50.0 [1.97] / -0.0 [.00]
7501-9999 [295.31-393.67]	+1% / -0.0 [.00]

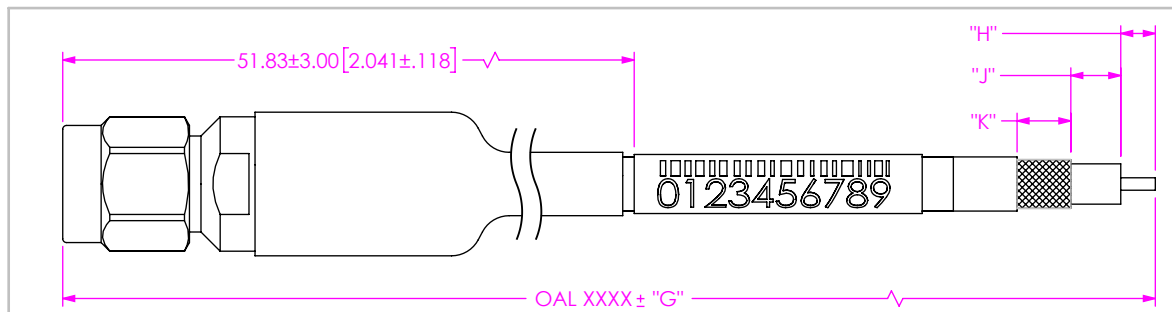


FIG 2  
LL043-92SP-102030-XXXX SHOWN (SEE NOTE 5 & 6)

"K" FORMAT: X.X  
"J" FORMAT: X.X  
"H" FORMAT: X.X

DO NOT LEAVE ANY SPACE BLANK,  
EACH MUST CONTAIN A  
NUMERIC CHARACTER 0 THRU 9

NOTES:

- CONNECTORS TO BE ORIENTED ACCORDING TO CO-RF-WI-3048-M.
- CABLE ASSEMBLY TO HAVE PROTECTIVE CAPS ASSEMBLED ON EACH END AND INDIVIDUALLY PACKAGED IN ESD BAG.
- ASSEMBLY TO BE 100% TESTED FOR RETURN LOSS AND INSERTION LOSS. LABEL EACH INDIVIDUAL CABLE ASSEMBLY WITH 1 LABEL-SER-02. RETURN LOSS SPECIFICATION IS EQUAL TO THE HIGHEST END OPTION LIMIT.
- CABLE LENGTHS LONGER THAN 1000 MILLIMETERS ARE NOT SUPPORTED BY S.I. TEST DATA.
- DIM "H", "J", AND "K" HAVE A MINIMUM VALUE OF 0.0mm & A MAXIMUM VALUE OF 9.9mm [.39"].
- FOR STRIPPED AND TINNED OPTION, BOTH THE CENTER CONDUCTOR IS TINNED.
- USE 3 DIGITS XXX (MILLIMETERS) FOR PHASE MATCHING OPTION. 999MM MAX LENGTH.

PROPRIETARY NOTE  
THIS DOCUMENT CONTAINS CONFIDENTIAL AND PROPRIETARY INFORMATION AND ALL DESIGN, MANUFACTURING, REPRODUCTION, USE, PATENT RIGHTS AND SALES RIGHTS ARE EXPRESSLY RESERVED BY SAMTEC, INC. THIS DOCUMENT SHALL NOT BE DISCLOSED, IN WHOLE OR PART, TO ANY UNAUTHORIZED PERSON OR ENTITY NOR REPRODUCED, TRANSFERRED OR INCORPORATED IN ANY OTHER PROJECT IN ANY MANNER WITHOUT THE EXPRESS WRITTEN CONSENT OF SAMTEC, INC.



520 PARK EAST BLVD., NEW ALBANY, IN 47150  
PHONE: 812-944-6733 FAX: 812-948-5047  
e-Mail info@SAMTEC.com code 55322

MATERIAL: DO NOT SCALE DRAWING  
CENTER CONTACTS: COPPER ALLOY SHEET SCALE: 3:1

OUT CONTACTS:  
-92SP/-92BJ/-24SP/-24BJ/-01BJ/-01SP: STAINLESS STEEL

INSULATORS:  
-92SP/-92BJ/-24SP/-24BJ/-01BJ/-01SP: ULTEM, KEL-F

DESCRIPTION: LL043 CABLE ASSEMBLY

DWG. NO. LL043-XXXX-XXXXXX-XXXX-X-XX

BY: MATT M. 10/11/2023 SHEET 1 OF 5

TABLE 2

END OPTION	SERIES	GENDER	FINISH			CONNECTOR KIT P/N	FIGURE
			CENTER CONTACT	OUTER CONTACT	CABLE BODY		
-92SP	2.92 MM	PLUG	50µ" GOLD	PASSIVATED	10µ" GOLD	PRF92-P-C-EP-043B-SS	SHT 3, FIG 3
-92BJ	2.92 MM	BULKHEAD JACK	50µ" GOLD	PASSIVATED	10µ" GOLD	PRF92-J-C-EP-043B-BS	SHT 3, FIG 4
-24SP	2.40 MM	PLUG	50µ" GOLD	PASSIVATED	10µ" GOLD	PRF24-P-C-EP-043B-SS	SHT 4, FIG 5
-24BJ	2.40 MM	BULKHEAD JACK	50µ" GOLD	PASSIVATED	10µ" GOLD	PRF24-J-C-EP-043B-BS	SHT 4, FIG 6
-01SP	SMA	PLUG	50µ" GOLD	PASSIVATED	10µ" GOLD	PRF01-P-C-EP-043B-SS	SHT 5, FIG 7
-01BJ	SMA	BULKHEAD JACK	50µ" GOLD	PASSIVATED	10µ" GOLD	PRF01-J-C-EP-043B-BS	SHT 5, FIG 8
**SING	SINGLE ENDED	-	-	-	-	-	-
**XXXXX	STRIPPED & TINNED	-	-	-	-	-	SHT 1, FIG 2

\*\* = END 2 OPTION ONLY

END OPTION	MAXIMUM RETURN LOSS (PER END)	MAXIMUM VSWR (PER END)	MAXIMUM INSERTION LOSS (IL) (PER END)	FREQUENCY	PROTECTIVE CAP COLOR
-92SP	22.51	1.162	.03+ .03*SQRT(Freq[GHz])	DC - 26.5 GHz	YELLOW
	21.53	1.183		26.5 - 43.5 GHz**	
-92BJ	22.51	1.162	.03+ .03*SQRT(Freq[GHz])	DC - 26.5 GHz	YELLOW
	21.53	1.183		26.5 - 43.5 GHz**	
-24SP	22.51	1.162	.03+ .03*SQRT(Freq[GHz])	DC - 26.5 GHz	GREEN
	21.53	1.183		26.5 - 43.5 GHz	
-24BJ	22.51	1.162	.03+ .03*SQRT(Freq[GHz])	DC - 26.5 GHz	GREEN
	21.53	1.183		26.5 - 43.5 GHz	
-01SP	22.51	1.162	.03+ .03*SQRT(Freq[GHz])	DC TO 26.5 GHz	BROWN
-01BJ	22.51	1.162	.03+ .03*SQRT(Freq[GHz])	DC TO 26.5 GHz	BROWN

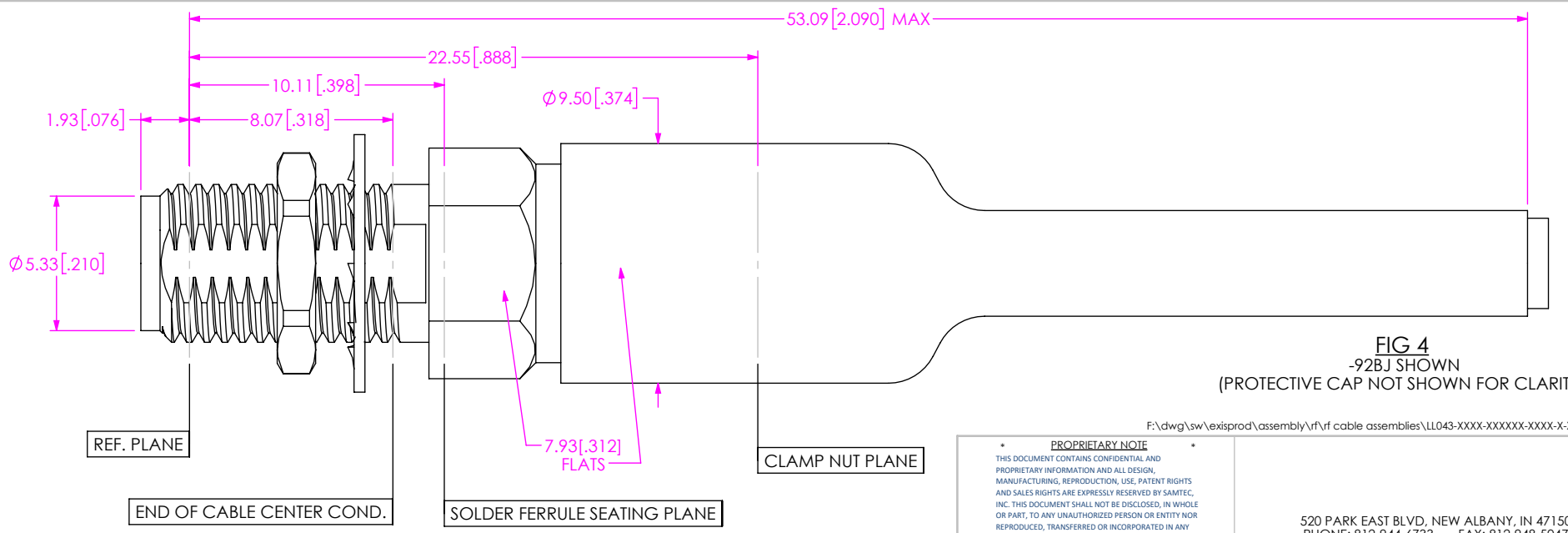
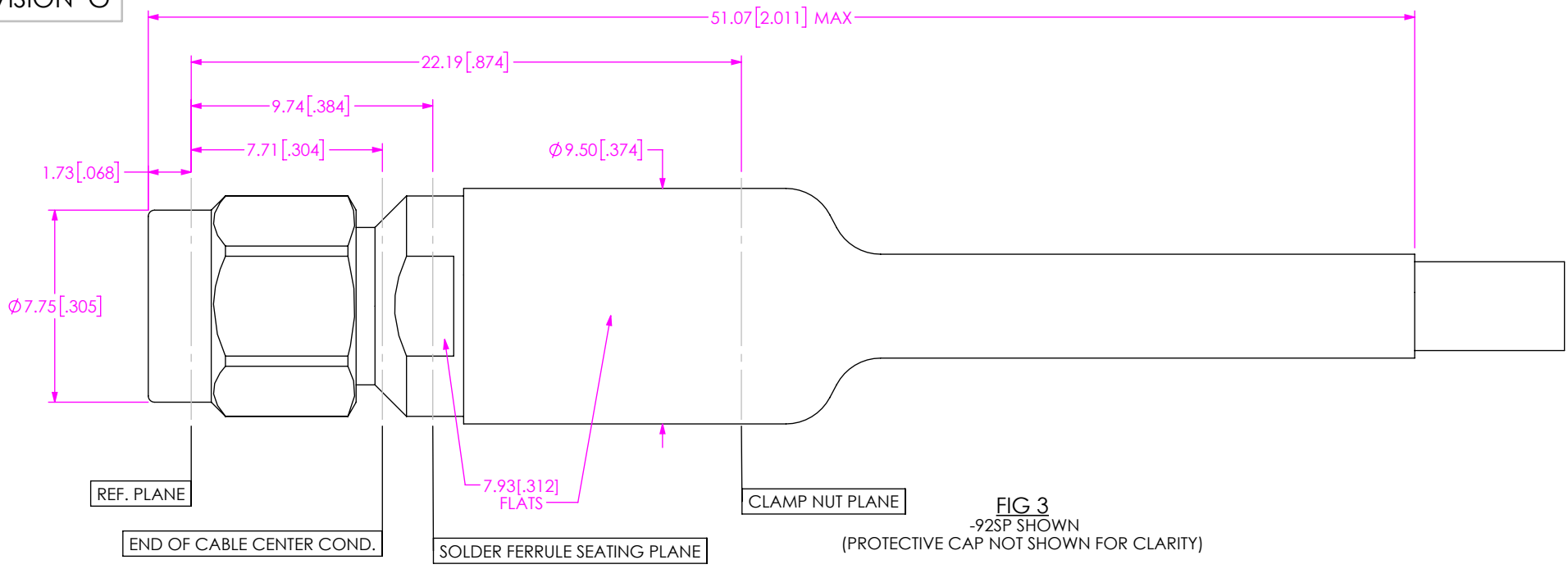
IL Max [dB] for cable assembly:

$$= \{12.3286 * \text{SQRT}(\text{Freq}[\text{GHz}]) + 0.2771 * \text{Freq}[\text{GHz}]\} * \text{OAL}[\text{mm}] / 30480 + \text{End Option IL\#1}\{\text{See Table 3}\} + \text{End Option IL\#2}\{\text{See Table 3}\}$$

\*\*=PRODUCTION TESTING TO 40GHZ

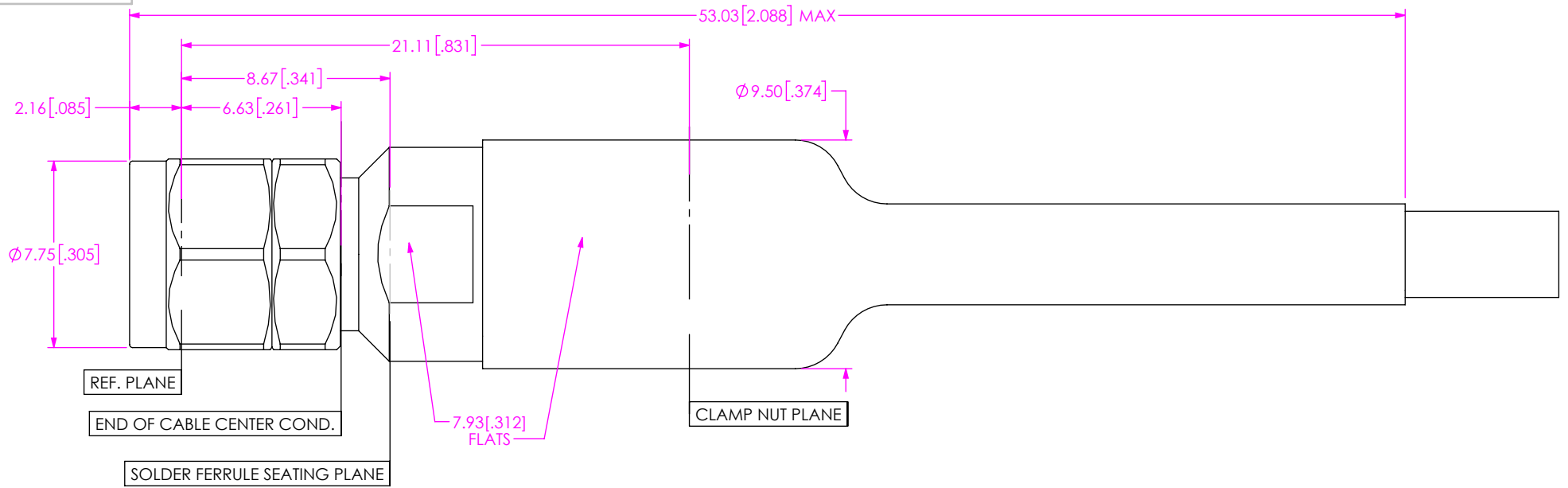
F:\dwg\sw\exisprod\assembly\rf\rf cable assemblies\LL043-XXXX-XXXXXX-XXXX-X-XX.slddrw

<p>DO NOT SCALE DRAWING</p> <p>SHEET SCALE: 4:1</p>	<p><b>PROPRIETARY NOTE</b></p> <p>THIS DOCUMENT CONTAINS CONFIDENTIAL AND PROPRIETARY INFORMATION AND ALL DESIGN, MANUFACTURING, REPRODUCTION, USE, PATENT RIGHTS AND SALES RIGHTS ARE EXPRESSLY RESERVED BY SAMTEC, INC. THIS DOCUMENT SHALL NOT BE DISCLOSED, IN WHOLE OR PART, TO ANY UNAUTHORIZED PERSON OR ENTITY NOR REPRODUCED, TRANSFERRED OR INCORPORATED IN ANY OTHER PROJECT IN ANY MANNER WITHOUT THE EXPRESS WRITTEN CONSENT OF SAMTEC, INC.</p>	 <p>520 PARK EAST BLVD, NEW ALBANY, IN 47150                  PHONE: 812-944-6733 FAX: 812-948-5047                  e-Mail info@SAMTEC.com code 55322</p>
	<p>DESCRIPTION:</p> <p>LL043 CABLE ASSEMBLY</p>	
	<p>DWG. NO.</p> <p>LL043-XXXX-XXXXXX-XXXX-X-XX</p> <p>BY: MATT M. 10/11/2023 SHEET 2 OF 5</p>	

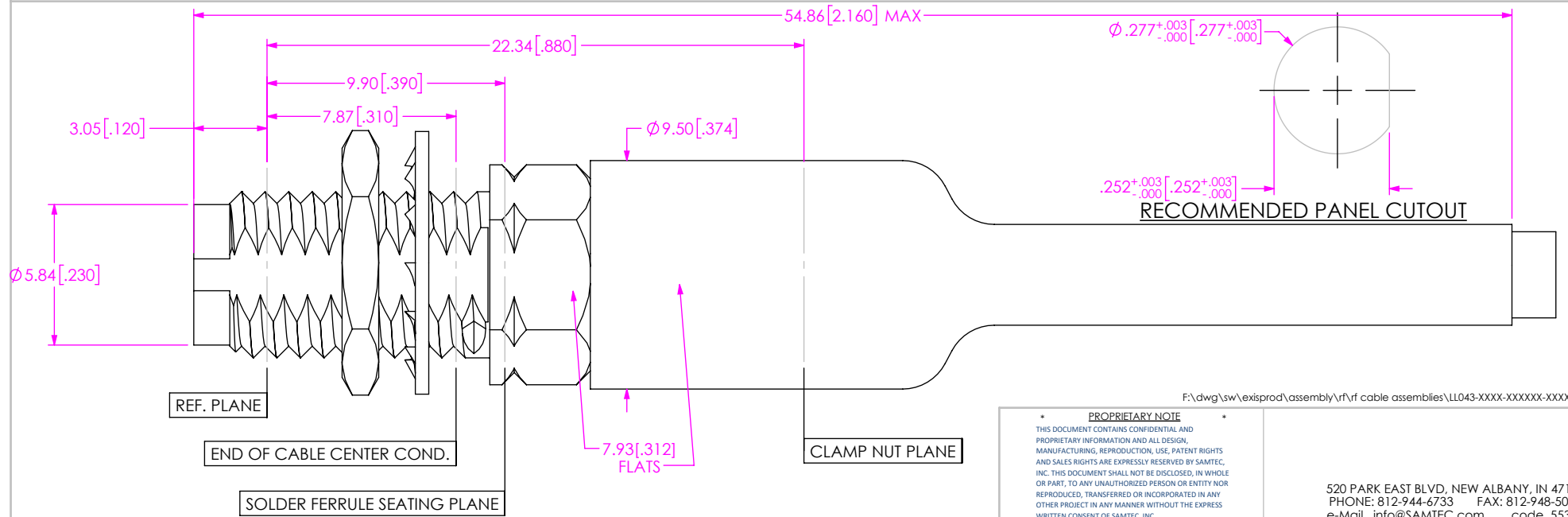


F:\dwg\sw\exisprod\assembly\rf\rf cable assemblies\LL043-XXXX-XXXXXX-XXXX-X-XX.slddrw

<p><b>PROPRIETARY NOTE</b></p> <p>THIS DOCUMENT CONTAINS CONFIDENTIAL AND PROPRIETARY INFORMATION AND ALL DESIGN, MANUFACTURING, REPRODUCTION, USE, PATENT RIGHTS AND SALES RIGHTS ARE EXPRESSLY RESERVED BY SAMTEC, INC. THIS DOCUMENT SHALL NOT BE DISCLOSED, IN WHOLE OR PART, TO ANY UNAUTHORIZED PERSON OR ENTITY NOR REPRODUCED, TRANSFERRED OR INCORPORATED IN ANY OTHER PROJECT IN ANY MANNER WITHOUT THE EXPRESS WRITTEN CONSENT OF SAMTEC, INC.</p>	<p>520 PARK EAST BLVD, NEW ALBANY, IN 47150 PHONE: 812-944-6733 FAX: 812-948-5047 e-Mail info@SAMTEC.com code 55322</p>	
	<p>DO NOT SCALE DRAWING</p> <p>SHEET SCALE: 4:1</p>	<p>DESCRIPTION: <b>LL043 CABLE ASSEMBLY</b></p>
	<p>BY: MATT M. 10/11/2023</p>	<p>DWG. NO. <b>LL043-XXXX-XXXXXX-XXXX-X-XX</b></p> <p>SHEET 3 OF 5</p>



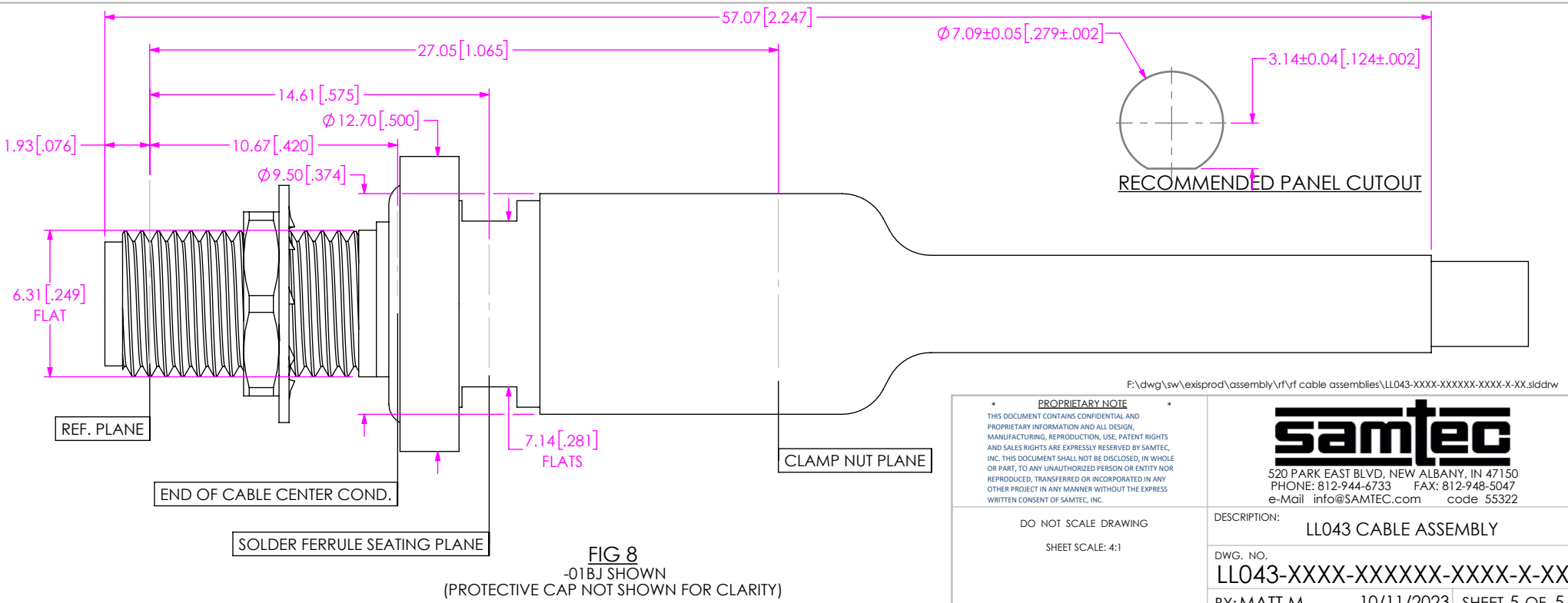
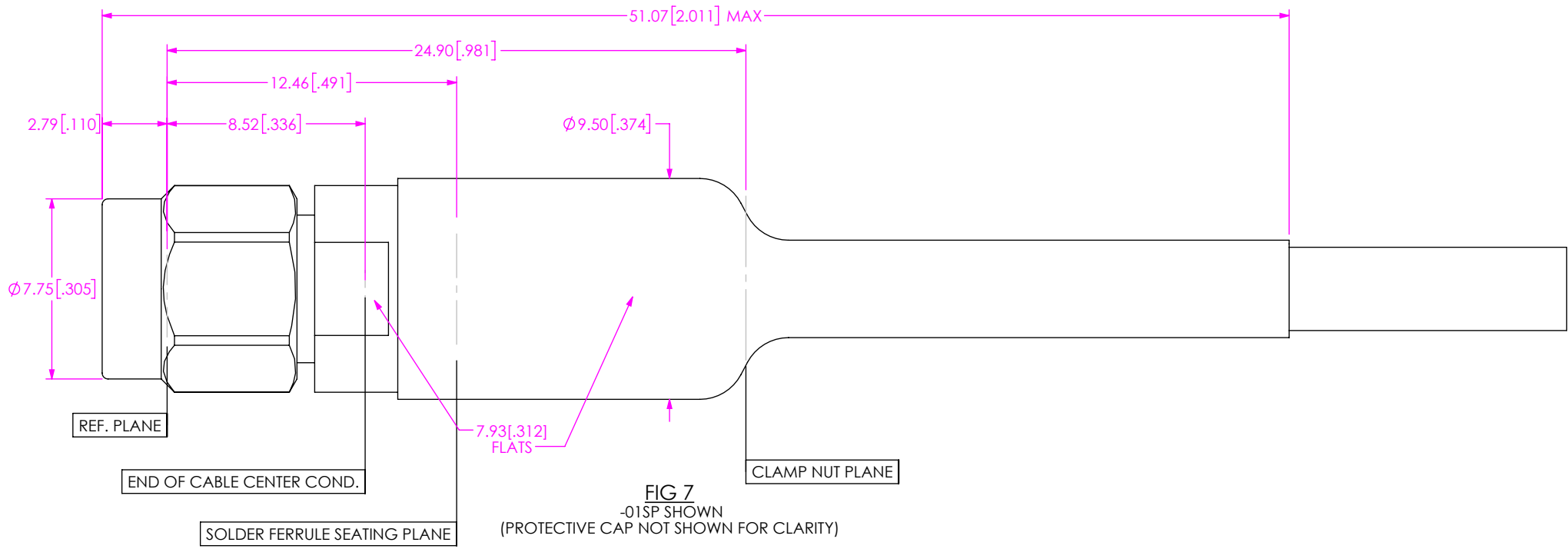
**FIG 5**  
-24SP SHOWN  
(PROTECTIVE CAP NOT SHOWN FOR CLARITY)



**FIG 6**  
-24BJ SHOWN  
(PROTECTIVE CAP NOT SHOWN FOR CLARITY)

F:\dwg\sw\exisprod\assembly\rf\rf cable assemblies\LL043-XXXX-XXXXXX-XXXX-X-XX.slddrw

<p><b>PROPRIETARY NOTE</b></p> <p>THIS DOCUMENT CONTAINS CONFIDENTIAL AND PROPRIETARY INFORMATION AND ALL DESIGN, MANUFACTURING, REPRODUCTION, USE, PATENT RIGHTS AND SALES RIGHTS ARE EXPRESSLY RESERVED BY SAMTEC, INC. THIS DOCUMENT SHALL NOT BE DISCLOSED, IN WHOLE OR PART, TO ANY UNAUTHORIZED PERSON OR ENTITY NOR REPRODUCED, TRANSFERRED OR INCORPORATED IN ANY OTHER PROJECT IN ANY MANNER WITHOUT THE EXPRESS WRITTEN CONSENT OF SAMTEC, INC.</p>	<p>520 PARK EAST BLVD, NEW ALBANY, IN 47150 PHONE: 812-944-6733 FAX: 812-948-5047 e-Mail info@SAMTEC.com code 55322</p>	
	<p>DO NOT SCALE DRAWING</p> <p>SHEET SCALE: 4:1</p>	<p>DESCRIPTION: LL043 CABLE ASSEMBLY</p>
	<p>BY: MATT M. 10/11/2023</p>	<p>DWG. NO. LL043-XXXX-XXXXXX-XXXX-X-XX</p> <p>SHEET 4 OF 5</p>



F:\dwg\sw\exisprod\assembly\rf\rf cable assemblies\LL043-XXXX-XXXXX-XXXX-X-XX.slddrw

<p><b>PROPRIETARY NOTE</b></p> <p>THIS DOCUMENT CONTAINS CONFIDENTIAL AND PROPRIETARY INFORMATION AND ALL DESIGN, MANUFACTURING, REPRODUCTION, USE, PATENT RIGHTS AND SALES RIGHTS ARE EXPRESSLY RESERVED BY SAMTEC, INC. THIS DOCUMENT SHALL NOT BE DISCLOSED, IN WHOLE OR PART, TO ANY UNAUTHORIZED PERSON OR ENTITY NOR REPRODUCED, TRANSFERRED OR INCORPORATED IN ANY OTHER PROJECT IN ANY MANNER WITHOUT THE EXPRESS WRITTEN CONSENT OF SAMTEC, INC.</p>	<p><b>samtec</b></p> <p>520 PARK EAST BLVD., NEW ALBANY, IN 47150 PHONE: 812-944-6733 FAX: 812-948-5047 e-Mail info@SAMTEC.com code 55322</p>	
	<p>DO NOT SCALE DRAWING</p> <p>SHEET SCALE: 4:1</p>	<p>DESCRIPTION: LL043 CABLE ASSEMBLY</p>
	<p>BY: MATT M. 10/11/2023</p>	<p>DWG. NO. LL043-XXXX-XXXXXX-XXXX-X-XX</p> <p>SHEET 5 OF 5</p>