

DO NOT
SCALE FROM
THIS PRINT

ITEM	COMPONENT	-H
1	SUB ASSEMBLY	SUB-MMCX-P-C-HF-RA-CA2
2	FERRULE	MCX-FER-005-F
3	INSULATOR	MMCX-INS-001
4	CAP	MMCX-CAP-001-F

MMCX-P-C-X-RA-CA2-X

GENDER
-P: PLUG

TYPE
-C: CABLE

PACKAGING

-BLANK: INDIVIDUALLY BAGGED
-B: BULK PACKAGED (QTY=100 MAX)

TERMINATION

-CA2: CABLE
(RG178)

ORIENTATION

-RA: RIGHT ANGLE

PLATING SPECIFICATION

-H: 30μ" GOLD CENTER CONTACT
AND OUTER CONTACT
(SEE TABLE 1)

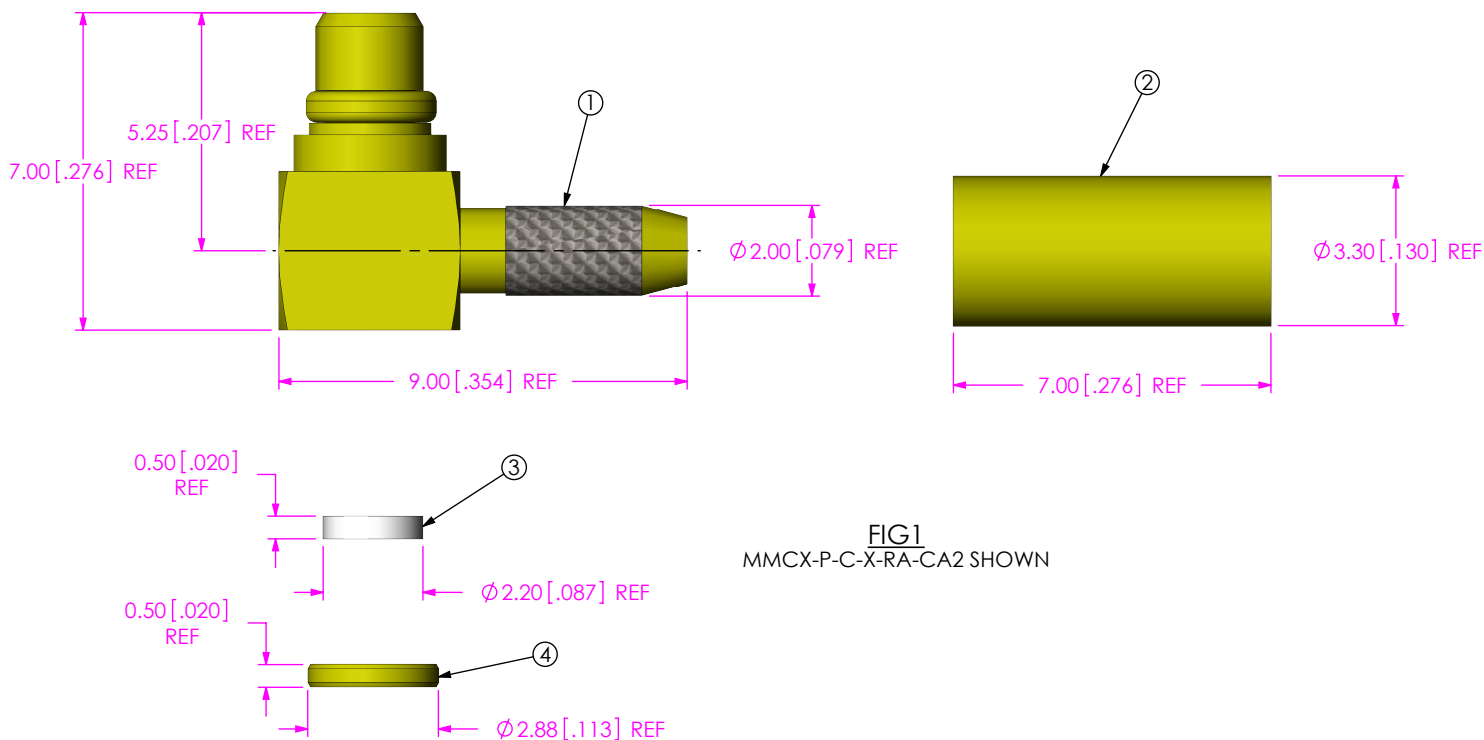


FIG1
MMCX-P-C-X-RA-CA2 SHOWN

NOTES:

1. NOTE DELETED.
2. NOTE DELETED.
3. NOTE DELETED.
4. NOTE DELETED.
5. PRODUCT TO BE PACKAGED PER PRECISION RF SECTION OF PACKAGING MANUAL.
6. NOTE DELETED.
7. NOTE DELETED.
8. NOTE DELETED.

F:\DWG\MISC\MKTG\MMCX-P-C-X-RA-CA2-X-MKT.SLDDRW

UNLESS OTHERWISE SPECIFIED,
DIMENSIONS ARE IN
MILLIMETERS [INCHES].
TOLERANCES ARE:
DECIMALS ANGLES
.X: ±0.3 [.01] 5°
.XX: ±0.13 [.005]
.XXX: ±0.051 [.0020]

PROPRIETARY NOTE

THIS DOCUMENT CONTAINS CONFIDENTIAL AND
PROPRIETARY INFORMATION AND ALL DESIGN,
MANUFACTURING, REPRODUCTION, USE, PATENT RIGHTS
AND SALES RIGHTS ARE EXPRESSLY RESERVED BY SAMTEC,
INC. THIS DOCUMENT SHALL NOT BE DISCLOSED, IN WHOLE
OR PART, TO ANY UNAUTHORIZED PERSON OR ENTITY NOR
REPRODUCED, TRANSFERRED OR INCORPORATED IN ANY
OTHER PROJECT IN ANY MANNER WITHOUT THE EXPRESS
WRITTEN CONSENT OF SAMTEC, INC.

MATERIAL: DO NOT SCALE DRAWING SHEET SCALE: 6:1

SHELL, FERRULE, CAP: BRASS
CONTACT: BRASS
DIELECTRIC: PTFE

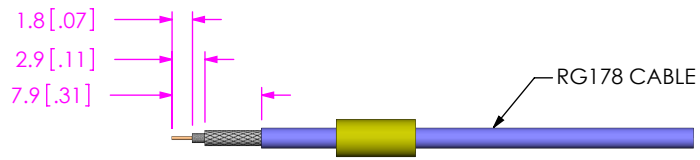


520 PARK EAST BLVD, NEW ALBANY, IN 47150
PHONE: 812-944-6733 FAX: 812-948-5047
e-Mail info@SAMTEC.com code 5322

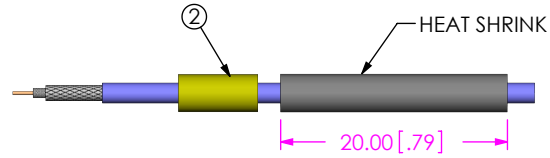
DESCRIPTION:
50 OHM MCX RIGHT ANGLE CABLE PLUG HIGH VIBRATION, RG178
DWG. NO.

MMCX-P-C-X-RA-CA2-X

BY: R MUSSER 02/06/2008 SHEET 1 OF 3

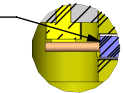


IN-PROCESS 1
STRIP CABLE AND TIN INNER CONDUCTOR

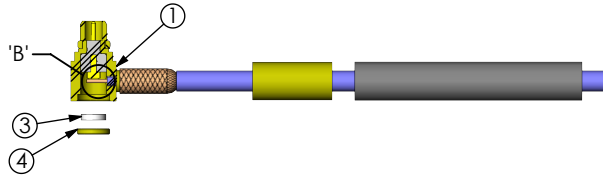


IN-PROCESS 2
ADD HEAT SHRINK TUBING AND FERRULE

END OF CABLE DIELECTRIC SHOULD SEAT UP AGAINST CONTACT CUP

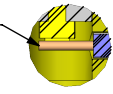


DETAIL 'B'
SCALE 4 : 1

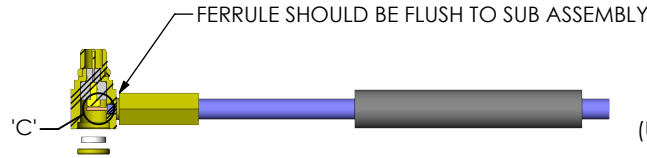


IN-PROCESS 3
FLARE SHIELD AND ADD SUB ASSEMBLY

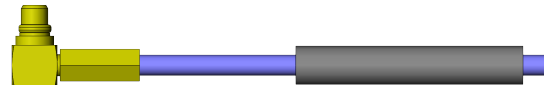
CABLE CENTER CONDUCTOR SHOULD NOT PROTRUDE OUTSIDE CONTACT CUP AFTER FERRULE IS CRIMPED



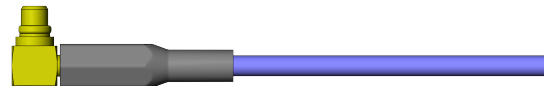
DETAIL 'C'
SCALE 4 : 1



IN-PROCESS 4
CRIMP FERRULE AND SOLDER SIGNAL PIN
(USE RF CRIMP HAND TOOL #CAT-RF-FER-01 AND .105" INCH DESIGNATION DIE SIZE)



IN-PROCESS 5
INSERT INSULATOR AND CAP



IN-PROCESS 6
ACTIVATE HEAT SHRINK TUBING

HEAT SHRINK SHOULD BE FLUSH TO SUB ASSEMBLY

F:\DWG\MISC\MKTG\MCMX-P-C-X-RA-CA2-X-MKT.SLDDRW

PROPRIETARY NOTE

THIS DOCUMENT CONTAINS CONFIDENTIAL AND PROPRIETARY INFORMATION AND ALL DESIGN, MANUFACTURING, REPRODUCTION, USE, PATENT RIGHTS AND SALES RIGHTS ARE EXPRESSLY RESERVED BY SAMTEC, INC. THIS DOCUMENT SHALL NOT BE DISCLOSED, IN WHOLE OR PART, TO ANY UNAUTHORIZED PERSON OR ENTITY NOR REPRODUCED, TRANSFERRED OR INCORPORATED IN ANY OTHER PROJECT IN ANY MANNER WITHOUT THE EXPRESS WRITTEN CONSENT OF SAMTEC, INC.

DO NOT SCALE DRAWING

SHEET SCALE: 1:0.666667



520 PARK EAST BLVD, NEW ALBANY, IN 47150
PHONE: 812-944-6733 FAX: 812-948-5047
e-Mail info@SAMTEC.com code 55322

DESCRIPTION:
50 OHM MCX RIGHT ANGLE CABLE PLUG HIGH VIBRATION, RG178

DWG. NO.
MMCX-P-C-X-RA-CA2-X

BY: R MUSSER 02/06/2008 SHEET 2 OF 3

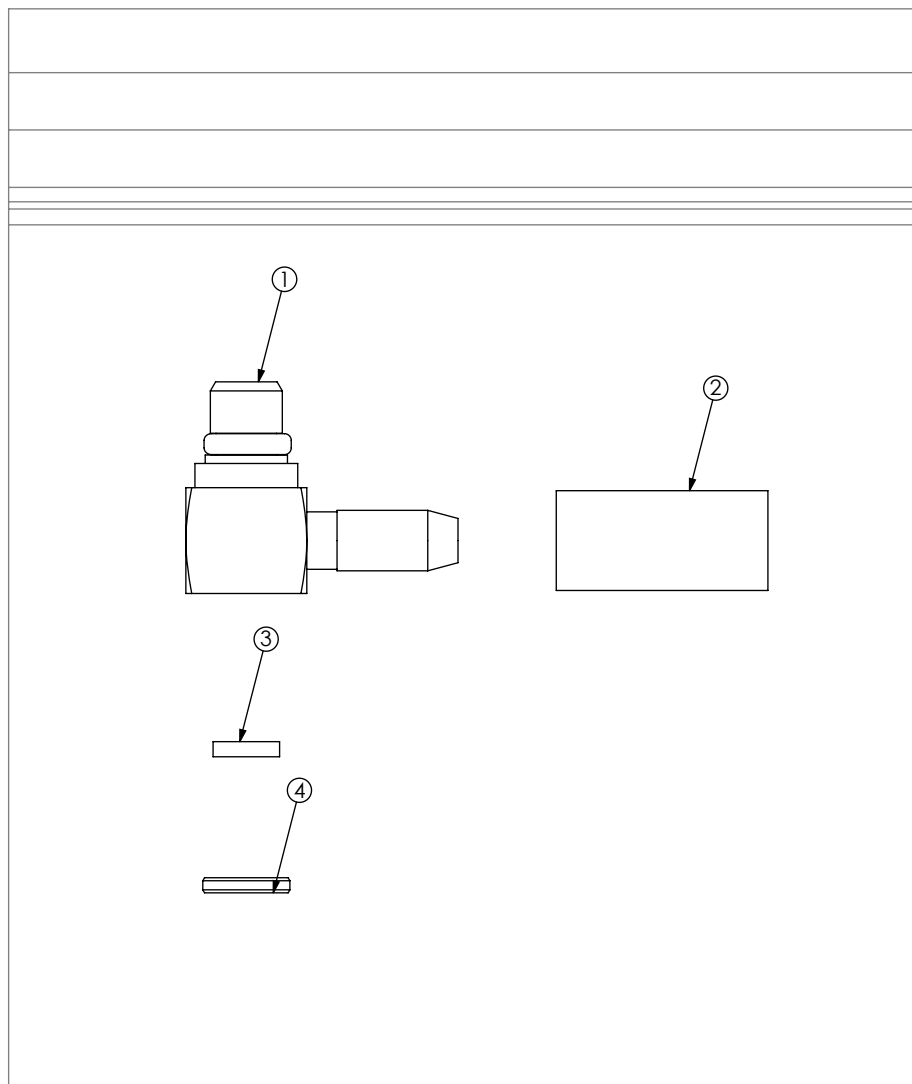


FIG2
MMCX-P-C-X-RA-CA2 SHOWN

F:\DWG\MISC\MKTG\MMCX-P-C-X-RA-CA2-X-MKT.SLDDRW

<p>PROPRIETARY NOTE THIS DOCUMENT CONTAINS CONFIDENTIAL AND PROPRIETARY INFORMATION AND ALL DESIGN, MANUFACTURING, REPRODUCTION, USE, PATENT RIGHTS AND SALES RIGHTS ARE EXPRESSLY RESERVED BY SAMTEC, INC. THIS DOCUMENT SHALL NOT BE DISCLOSED, IN WHOLE OR PART, TO ANY UNAUTHORIZED PERSON OR ENTITY NOR REPRODUCED, TRANSFERRED OR INCORPORATED IN ANY OTHER PROJECT IN ANY MANNER WITHOUT THE EXPRESS WRITTEN CONSENT OF SAMTEC, INC.</p>	<p>samtec 520 PARK EAST BLVD, NEW ALBANY, IN 47150 PHONE: 812-944-6733 FAX: 812-948-5047 e-Mail info@SAMTEC.com code 55322</p>
<p>SHEET SCALE: 4:1 DO NOT SCALE DRAWING</p>	<p>DESCRIPTION: 50 OHM MCX RIGHT ANGLE CABLE PLUG HIGH VIBRATION, RG178</p>
	<p>DWG. NO. MMCX-P-C-X-RA-CA2-X BY: R MUSSER 02/06/2008 SHEET 3 OF 3</p>