

DO NOT
SCALE FROM
THIS PRINT

MMX MATED VIEWS

DESIGNED & DIMENSIONED
IN INCHES[MILLIMETERS]

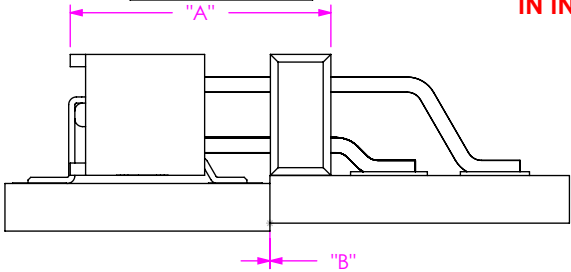


FIG 1
MMS-02-DH MATED WITH MMT-DH

TABLE 1							
		MMS-02-DH				WIPE	
		"A" FULLY MATED	"A" MAX	"B" FULLY MATED	"B" MAX	FULLY MATED	MIN
MMT-DH LEAD STYLE	-01	N/A	N/A	N/A	N/A	N/A	N/A
	-02	.339 [8.61]	.344 [8.74]	.000 [0.00]	.005 [0.13]	.020 [0.51]	.015 [0.38]

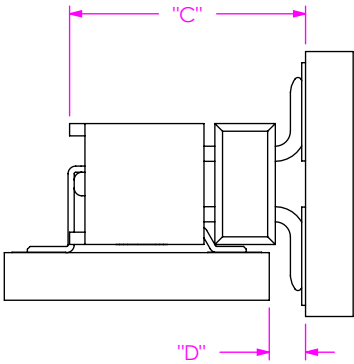


FIG 2
MMS-02-DH MATED WITH MMT-DV

TABLE 2							
		MMS-02-DH				WIPE	
		"C" FULLY MATED	"C" MAX	"D" FULLY MATED	"D" MAX	FULLY MATED	MIN
MMT-DV LEAD STYLE	-01	.307 [7.80]	.335 [8.50]	.047 [1.19]	.075 [1.89]	.043 [1.08]	.015 [0.38]

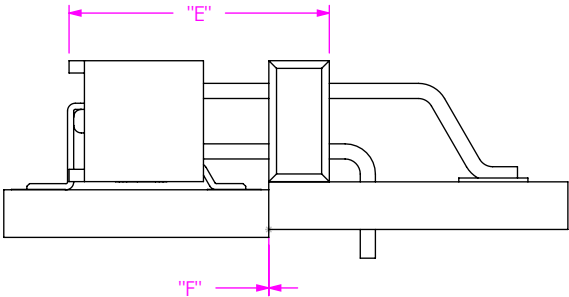


FIG 3
MMS-02-DH MATED WITH MMT-MT

TABLE 3							
		MMS-02-DH				WIPE	
		"E" FULLY MATED	"E" MAX	"F" FULLY MATED	"F" MAX	FULLY MATED	MIN
MMT-DH LEAD STYLE	-01	N/A	N/A	N/A	N/A	N/A	N/A
	-02	.339 [8.61]	.345 [8.76]	.000 [0.00]	.006 [0.15]	.021 [0.53]	.015 [0.38]

NOTES:

- 1. ALL DIMENSIONS BASED ON NOMINAL VALUES FOR SAMTEC RECOMMENDED PCB LAYOUTS.
- 2. ALTHOUGH MAX DIMENSION ARE LISTED SAMTEC RECOMMENDS FULLY MATING COMPONENTS.

PROPRIETARY NOTE
THIS DOCUMENT CONTAINS CONFIDENTIAL AND
PROPRIETARY INFORMATION AND ALL DESIGN,
MANUFACTURING, REPRODUCTION, USE, PATENT RIGHTS
AND SALES RIGHTS ARE EXPRESSLY RESERVED BY SAMTEC,
INC. THIS DOCUMENT SHALL NOT BE DISCLOSED, IN WHOLE
OR PART, TO ANY UNAUTHORIZED PERSON OR ENTITY NOR
REPRODUCED, TRANSFERRED OR INCORPORATED IN ANY
OTHER PROJECT IN ANY MANNER WITHOUT THE EXPRESS
WRITTEN CONSENT OF SAMTEC, INC.



520 PARK EAST BLVD, NEW ALBANY, IN 47150
PHONE: 812-944-6733 FAX: 812-948-5047
e-Mail: info@SAMTEC.com code: 55322

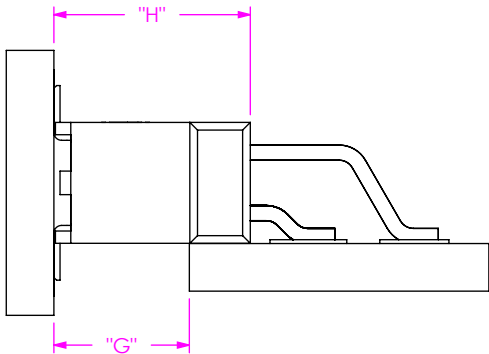


FIG 4
MMS-02-DV MATED WITH MMT-DH

TABLE 4							
		MMS-02-DV				WIPE	
		"G" FULLY MATED	"G" MAX	"H" FULLY MATED	"H" MAX	FULLY MATED	MIN
MMT-DH LEAD STYLE	-01	.176 [4.47]	.218 [5.54]	.256 [6.50]	.298 [7.57]	.057 [1.45]	.015 [0.38]
	-02	.225 [5.72]	.316 [8.03]	.305 [7.75]	.396 [10.06]	.106 [2.69]	.015 [0.38]

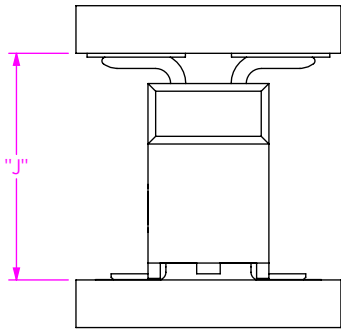


FIG 5
MMS-02-DV MATED WITH MMT-DV

TABLE 5					
		MMS-02-DV		WIPE	
		"J" FULLY MATED	"J" MAX	FULLY MATED	MIN
MMT-DV LEAD STYLE	-01	.295 [7.49]	.337 [8.55]	.057 [1.44]	.015 [0.38]

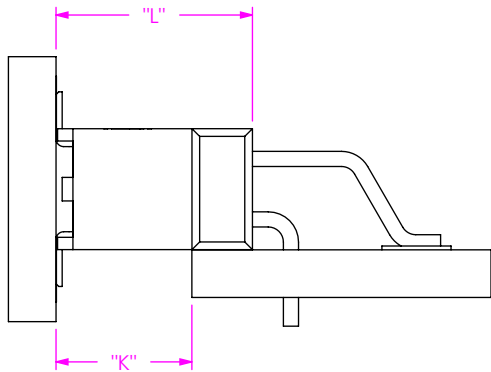


FIG 6
MMS-02-DV MATED WITH MMT-MT

TABLE 6							
		MMS-02-DV				WIPE	
		"K" FULLY MATED	"K" MAX	"L" FULLY MATED	"L" MAX	FULLY MATED	MIN
MMT-MT LEAD STYLE	-01	.177 [4.50]	.219 [5.55]	.256 [6.50]	.298 [7.56]	.057 [1.44]	.015 [0.38]
	-02	.226 [5.74]	.317 [8.04]	.305 [7.75]	.396 [10.05]	.106 [2.68]	.015 [0.38]

• PROPRIETARY NOTE •
THIS DOCUMENT CONTAINS CONFIDENTIAL AND PROPRIETARY INFORMATION AND ALL DESIGN, MANUFACTURING, REPRODUCTION, USE, PATENT RIGHTS AND SALES RIGHTS ARE EXPRESSLY RESERVED BY SAMTEC, INC. THIS DOCUMENT SHALL NOT BE DISCLOSED, IN WHOLE OR PART, TO ANY UNAUTHORIZED PERSON OR ENTITY NOR REPRODUCED, TRANSFERRED OR INCORPORATED IN ANY OTHER PROJECT IN ANY MANNER WITHOUT THE EXPRESS WRITTEN CONSENT OF SAMTEC, INC.



520 PARK EAST BLVD, NEW ALBANY, IN 47150
PHONE: 812-944-6733 FAX: 812-948-5047
e-Mail: info@SAMTEC.com code: 55322

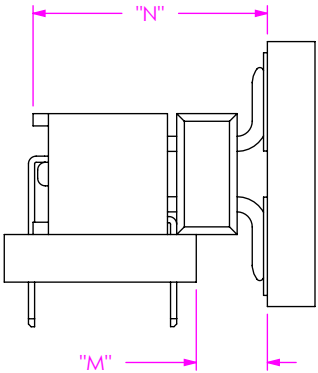


FIG 7
MMS-01-DH MATED WITH MMT-DV

TABLE 7							
		MMS-01-DH				WIPE	
		"M" FULLY MATED	"M" MAX	"N" FULLY MATED	"N" MAX	FULLY MATED	MIN
MMT-DV LEAD STYLE	-01	.093 [2.36]	.123 [3.12]	.305 [7.75]	.335 [8.50]	.045 [1.14]	.015 [0.38]
	-02	.142 [3.61]	.221 [5.61]	.354 [8.99]	.433 [10.99]	.094 [2.38]	.015 [0.38]

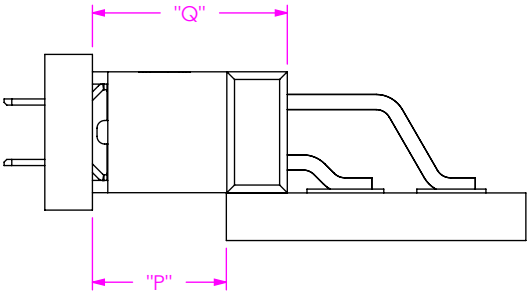


FIG 8
MMS-01-DV MATED WITH MMT-DH

TABLE 8							
		MMS-01-DV				WIPE	
		"P" FULLY MATED	"P" MAX	"Q" FULLY MATED	"Q" MAX	FULLY MATED	MIN
MMT-DH LEAD STYLE	-01	.174 [4.42]	.216 [5.48]	.254 [6.45]	.296 [7.51]	.057 [1.44]	.015 [0.38]
	-02	.223 [5.66]	.314 [7.97]	.303 [7.70]	.394 [10.00]	.106 [2.68]	.015 [0.38]

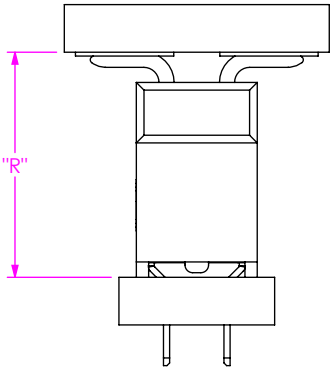


FIG 9
MMS-01-DV MATED WITH MMT-DV

TABLE 9					
		MMS-01-DV		WIPE	
		"R" FULLY MATED	"R" MAX	FULLY MATED	MIN
MMT-DV LEAD STYLE	-01	.293 [7.44]	.334 [8.48]	.056 [1.41]	.015 [0.38]

• PROPRIETARY NOTE •
THIS DOCUMENT CONTAINS CONFIDENTIAL AND PROPRIETARY INFORMATION AND ALL DESIGN, MANUFACTURING, REPRODUCTION, USE, PATENT RIGHTS AND SALES RIGHTS ARE EXPRESSLY RESERVED BY SAMTEC, INC. THIS DOCUMENT SHALL NOT BE DISCLOSED, IN WHOLE OR PART, TO ANY UNAUTHORIZED PERSON OR ENTITY NOR REPRODUCED, TRANSFERRED OR INCORPORATED IN ANY OTHER PROJECT IN ANY MANNER WITHOUT THE EXPRESS WRITTEN CONSENT OF SAMTEC, INC.



520 PARK EAST BLVD, NEW ALBANY, IN 47150
PHONE: 812-944-6733 FAX: 812-948-5047
e-Mail: info@SAMTEC.com code: 55322

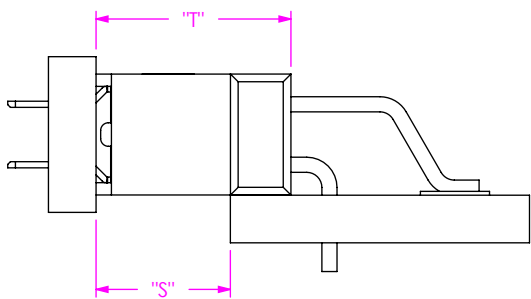


FIG 10
MMS-01-DV MATED WITH MMT-MT

TABLE 10							
		MMS-01-DV				WIPE	
		"S" FULLY MATED	"S" MAX	"T" FULLY MATED	"T" MAX	FULLY MATED	MIN
MMT-MT LEAD STYLE	-01	.175 [4.45]	.217 [5.50]	.254 [6.44]	.295 [7.50]	.057 [1.44]	.015 [0.38]
	-02	.224 [5.69]	.315 [7.99]	.303 [7.69]	.393 [9.99]	.106 [2.68]	.015 [0.38]

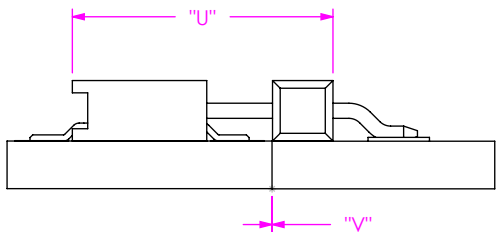


FIG 11
MMS-02-SH MATED WITH MMT-SH

TABLE 11							
		MMS-02-SH				WIPE	
		"U" FULLY MATED	"U" MAX	"V" FULLY MATED	"V" MAX	FULLY MATED	MIN
MMT-SH LEAD STYLE	-01	N/A	N/A	N/A	N/A	N/A	N/A
	-02	.339 [8.61]	.344 [8.74]	.000 [0.00]	.005 [0.13]	.020 [0.51]	.015 [0.38]

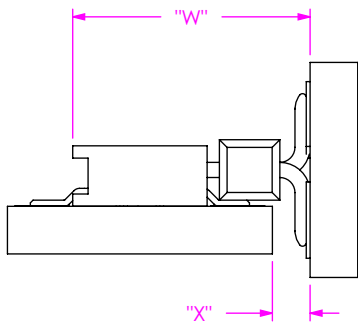


FIG 12
MMS-02-SH MATED WITH MMT-SV

TABLE 12							
		MMS-02-SH				WIPE	
		"W" FULLY MATED	"W" MAX	"X" FULLY MATED	"X" MAX	FULLY MATED	MIN
MMT-SV LEAD STYLE	-01	.309 [7.85]	.335 [8.51]	.049 [1.24]	.075 [1.91]	.041 [1.04]	.015 [0.38]
	-02	.358 [9.09]	.433 [11.00]	.098 [2.49]	.173 [4.39]	.090 [2.29]	.015 [0.38]

• PROPRIETARY NOTE •
THIS DOCUMENT CONTAINS CONFIDENTIAL AND PROPRIETARY INFORMATION AND ALL DESIGN, MANUFACTURING, REPRODUCTION, USE, PATENT RIGHTS AND SALES RIGHTS ARE EXPRESSLY RESERVED BY SAMTEC, INC. THIS DOCUMENT SHALL NOT BE DISCLOSED, IN WHOLE OR PART, TO ANY UNAUTHORIZED PERSON OR ENTITY NOR REPRODUCED, TRANSFERRED OR INCORPORATED IN ANY OTHER PROJECT IN ANY MANNER WITHOUT THE EXPRESS WRITTEN CONSENT OF SAMTEC, INC.



520 PARK EAST BLVD, NEW ALBANY, IN 47150
PHONE: 812-944-6733 FAX: 812-948-5047
e-Mail: info@SAMTEC.com code: 55322

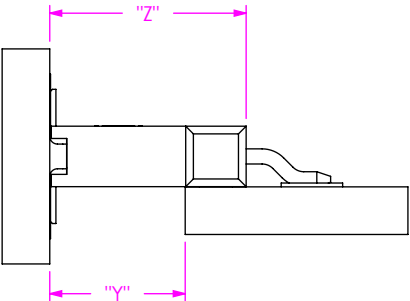


FIG 13
MMS-02-SV MATED WITH MMT-SH

TABLE 13							
		MMS-02-SV				WIPE	
		"Y" FULLY MATED	"Y" MAX	"Z" FULLY MATED	"Z" MAX	FULLY MATED	MIN
MMT-SH LEAD STYLE	-01	.176 [4.47]	.218 [5.53]	.256 [6.50]	.298 [7.56]	.057 [1.44]	.015 [0.38]
	-02	.225 [5.72]	.316 [8.02]	.305 [7.75]	.396 [10.05]	.106 [2.68]	.015 [0.38]

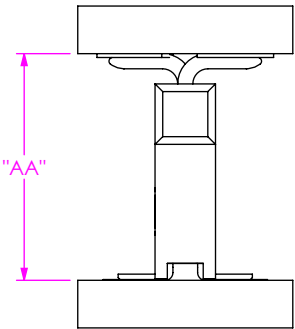


FIG 14
MMS-02-SV MATED WITH MMT-SV

TABLE 14					
		MMS-02-SV		WIPE	
		"AA" FULLY MATED	"AA" MAX	FULLY MATED	MIN
MMT-SV LEAD STYLE	-01	.295 [7.49]	.337 [8.56]	.057 [1.45]	.015 [0.38]
	-02	.344 [8.74]	.435 [11.05]	.106 [2.69]	.015 [0.38]

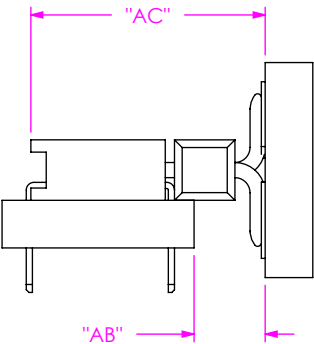


FIG 15
MMS-01-SH MATED WITH MMT-SV

TABLE 15							
		MMS-01-SH				WIPE	
		"AB" FULLY MATED	"AB" MAX	"AC" FULLY MATED	"AC" MAX	FULLY MATED	MIN
MMT-SV LEAD STYLE	-01	.093 [2.36]	.123 [3.12]	.305 [7.75]	.335 [8.51]	.045 [1.14]	.015 [0.38]
	-02	.142 [3.61]	.221 [5.61]	.354 [8.99]	.433 [11.00]	.094 [2.39]	.015 [0.38]

• PROPRIETARY NOTE •
THIS DOCUMENT CONTAINS CONFIDENTIAL AND PROPRIETARY INFORMATION AND ALL DESIGN, MANUFACTURING, REPRODUCTION, USE, PATENT RIGHTS AND SALES RIGHTS ARE EXPRESSLY RESERVED BY SAMTEC, INC. THIS DOCUMENT SHALL NOT BE DISCLOSED, IN WHOLE OR PART, TO ANY UNAUTHORIZED PERSON OR ENTITY NOR REPRODUCED, TRANSFERRED OR INCORPORATED IN ANY OTHER PROJECT IN ANY MANNER WITHOUT THE EXPRESS WRITTEN CONSENT OF SAMTEC, INC.

samtec
520 PARK EAST BLVD, NEW ALBANY, IN 47150
PHONE: 812-944-6733 FAX: 812-948-5047
e-Mail: info@SAMTEC.com code: 55322

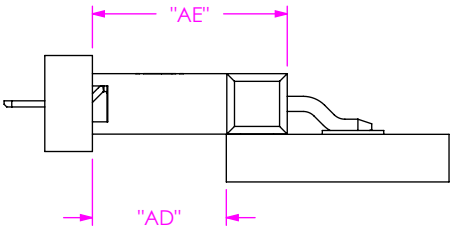


FIG 16
MMS-01-SV MATED WITH MMT-SH

TABLE 16							
		MMS-01-SV				WIPE	
		"AD" FULLY MATED	"AD" MAX	"AE" FULLY MATED	"AE" MAX	FULLY MATED	MIN
MMT-SH LEAD STYLE	-01	.174 [4.42]	.215 [5.46]	.254 [6.44]	.295 [7.49]	.056 [1.42]	.015 [0.38]
	-02	.223 [5.66]	.313 [7.95]	.303 [7.69]	.393 [9.97]	.105 [2.67]	.015 [0.38]

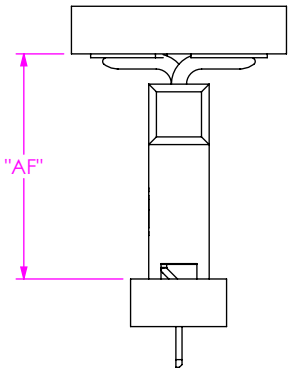


FIG 17
MMS-01-SV MATED WITH MMT-SV

TABLE 17					
		MMS-02-SV		WIPE	
		"AF" FULLY MATED	"AF" MAX	FULLY MATED	MIN
MMT-SV LEAD STYLE	-01	.254 [6.45]	.295 [7.49]	.056 [1.42]	.015 [0.38]
	-02	.303 [7.70]	.393 [9.98]	.105 [2.67]	.015 [0.38]

• PROPRIETARY NOTE •
THIS DOCUMENT CONTAINS CONFIDENTIAL AND PROPRIETARY INFORMATION AND ALL DESIGN, MANUFACTURING, REPRODUCTION, USE, PATENT RIGHTS AND SALES RIGHTS ARE EXPRESSLY RESERVED BY SAMTEC, INC. THIS DOCUMENT SHALL NOT BE DISCLOSED, IN WHOLE OR PART, TO ANY UNAUTHORIZED PERSON OR ENTITY NOR REPRODUCED, TRANSFERRED OR INCORPORATED IN ANY OTHER PROJECT IN ANY MANNER WITHOUT THE EXPRESS WRITTEN CONSENT OF SAMTEC, INC.



520 PARK EAST BLVD, NEW ALBANY, IN 47150
PHONE: 812-944-6733 FAX: 812-948-5047
e-Mail: info@SAMTEC.com code: 55322