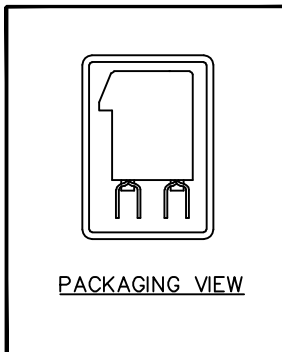
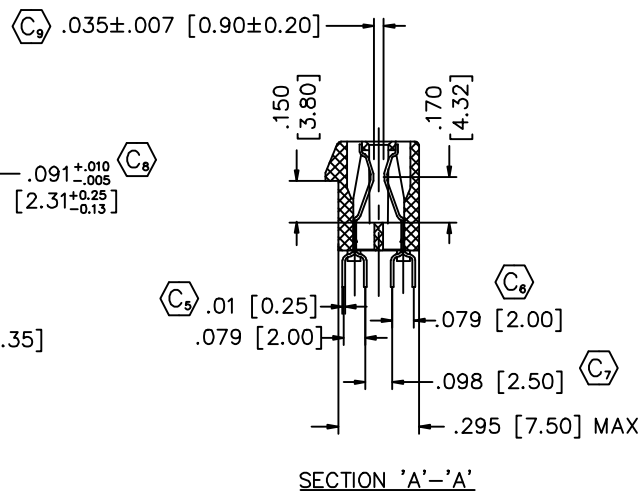
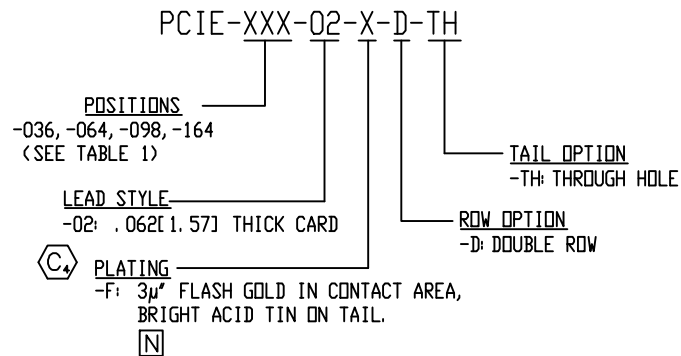
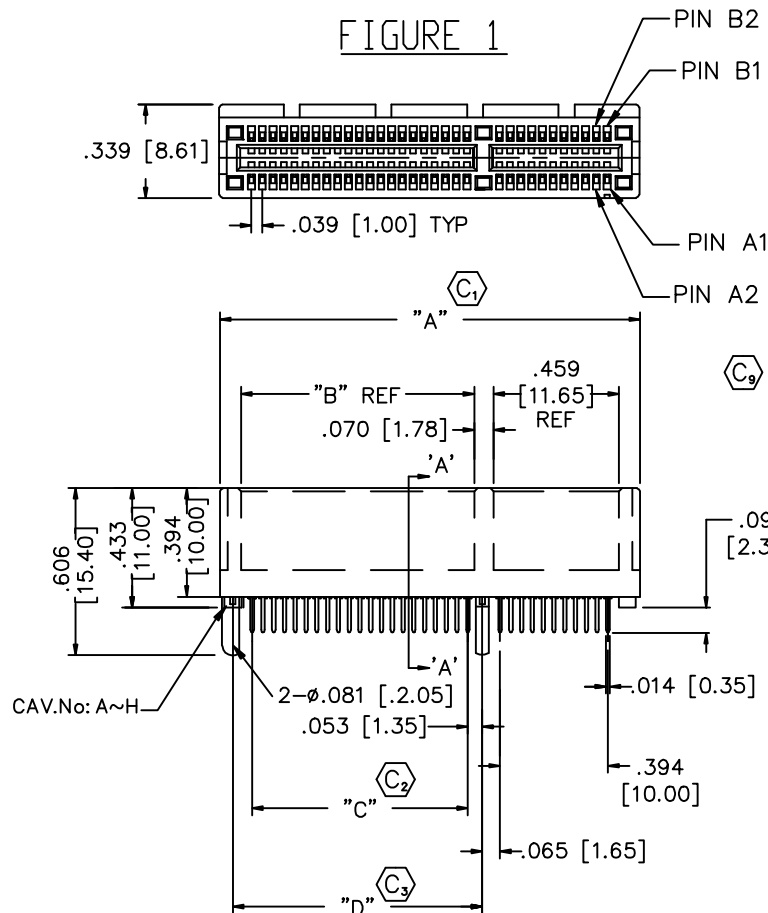


NOTES:

1. $\text{\textcircled{C}}$ REPRESENTS CRITICAL DIMENSION.
2. PARTS ARE ROHS COMPLIANT.
3. PARTS TO BE PACKAGED IN TUBES.
(PT-1-24-01-52 AND TP-13)



POSITIONS	"A"	"B"	"C"	"D"	"E"	"F"
-036	.984 [25.00]	.301 [7.65]	.236 [6.00]	.360 [9.15]	.236 [6.00]	.321 [8.15]
-064	1.535 [39.00]	.852 [21.65]	.787 [20.00]	.911 [23.15]	.787 [20.00]	.872 [22.15]
-098	2.205 [56.00]	1.522 [38.65]	1.457 [37.00]	1.581 [40.15]	1.457 [37.00]	1.541 [39.15]
-164	3.504 [89.00]	2.821 [71.65]	2.756 [70.00]	2.879 [73.15]	2.756 [70.00]	2.840 [72.15]

UNLESS OTHERWISE SPECIFIED, DIMENSIONS ARE INCHES [MM]. TOLERANCES ARE:

DECIMALS HOLES
.X: ±.10 .X: ±.10
.XX: ±.020 .XX: ±.015
.XXX: ±.015 .XXX: ±.010

PROPRIETARY NOTE
THIS DOCUMENT CONTAINS INFORMATION CONFIDENTIAL AND PROPRIETARY TO SAMTEC INC. AND SHALL NOT BE REPRODUCED OR TRANSFERRED TO OTHER DOCUMENTS OR DISCLOSED TO OTHER THAN THAT FOR WHICH IT WAS OBTAINED WITHOUT THE EXPRESSED WRITTEN CONSENT OF SAMTEC INC.

DO NOT SCALE DRAWING
INSULATOR: NYLON 6/6 (RATED UL94V-0)
COLOR: BLACK
CONTACT: PHOSPHOR BRONZE

SHEET SCALE: 1:2

DESCRIPTION: PCI EXPRESS CARD CONNECTOR

DWG. NO. PCIE-XXX-02-X-D-TH

BY: HARPENAU 03/14/05 SHEET 1 OF 1

520 PARK EAST BLVD. NEW ALBANY, IN 47150
(812) 944-6733 P.O. BOX 1147 TWX: 810-540-4085

CODE: 55322

F:\DVG\EXISPROD\ASSEMBLY\0\PCI-EXPRESS