

DO NOT  
SCALE FROM  
THIS PRINT

DESIGNED AND DIMENSIONED IN INCHES[MILLIMETERS]  
ALL DIMENSIONS REFERENCE EXCEPT AS SHOWN

PRF00-J-C-EE-086-SD

SERIES  
-00: SMP

GENDER  
-J: JACK

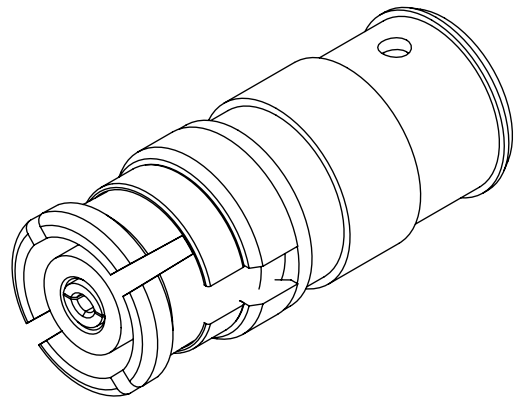
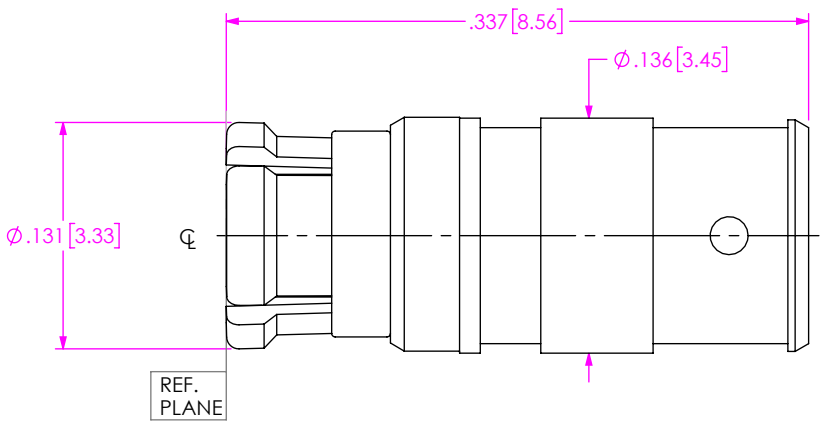
TYPE  
-C: CABLE

FINISH  
-EE: 50µ" EXTRA HEAVY GOLD  
CENTER CONTACT, 50µ" EXTRA  
HEAVY GOLD OUTER CONTACT

TERMINATION  
-D: DIRECT SOLDER


ORIENTATION  
-S: STRAIGHT

CABLE TYPE  
-086: TEMP FLEX 1001935086

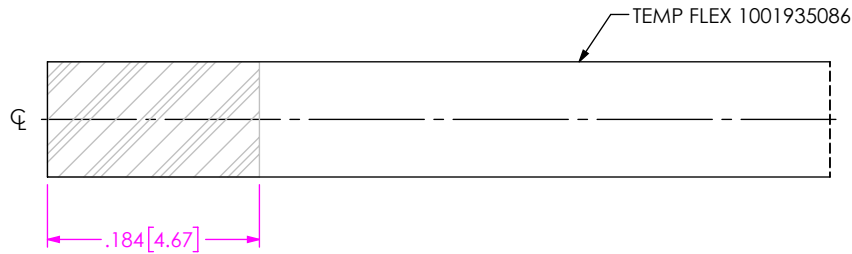


NOTES:

1. MATERIAL:  
CONTACT, BODY, BUSHING, ANTI-ROCK RING, EMI RING: BERYLLIUM COPPER  
INSULATOR: PTFE
2. FINISH:  
CONTACT, BODY, ANTI-ROCK RING, EMI RING: 50µ" MIN. GOLD OVER 50µ" MIN. NICKEL PLATE

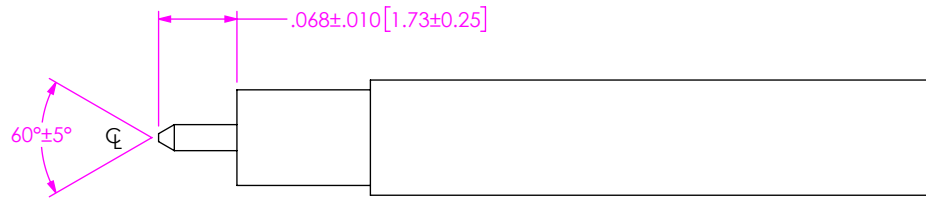
<p><b>PROPRIETARY NOTE</b></p> <p><small>THIS DOCUMENT CONTAINS CONFIDENTIAL AND PROPRIETARY INFORMATION AND ALL DESIGN, MANUFACTURING, REPRODUCTION, USE, PATENT RIGHTS AND SALES RIGHTS ARE EXPRESSLY RESERVED BY SAMTEC, INC. THIS DOCUMENT SHALL NOT BE DISCLOSED, IN WHOLE OR PART, TO ANY UNAUTHORIZED PERSON OR ENTITY NOR REPRODUCED, TRANSFERRED OR INCORPORATED IN ANY OTHER PROJECT IN ANY MANNER WITHOUT THE EXPRESS WRITTEN CONSENT OF SAMTEC, INC.</small></p>	 <p>520 PARK EAST BLVD, NEW ALBANY, IN 47150 PHONE: 812-944-6733 FAX: 812-948-5047 e-Mail info@SAMTEC.com code 55322</p>
<p>SHEET SCALE: 6:1</p> <p>DO NOT SCALE DRAWING</p>	<p>DESCRIPTION: SMP SOCKET, DIRECT SOLDER FOR TEMP FLEX 1001935086</p>
	<p>DWG. NO. <b>PRF00-J-C-EE-086-SD</b></p>
	<p>BY: MATT M. 01/10/2023 SHEET 1 OF 2</p>

# CABLE APPLICATION VIEWS



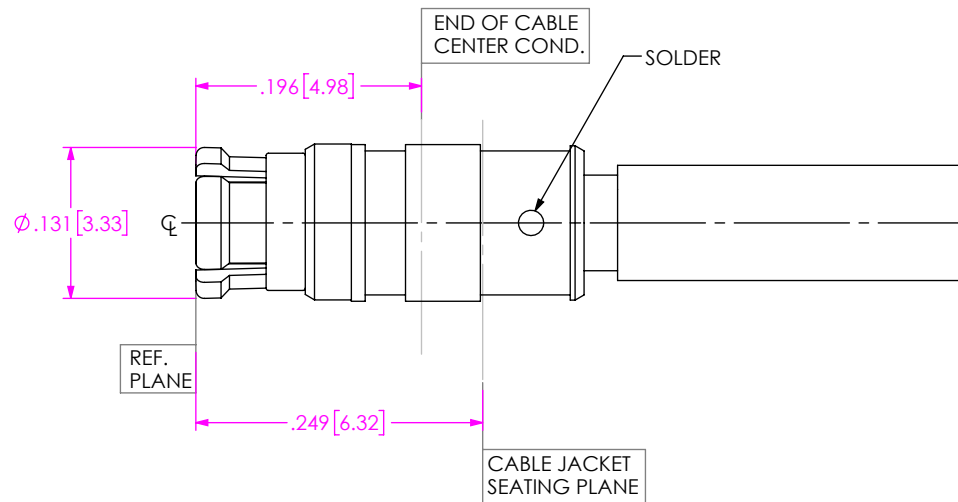
1. STRIP THEN PRE-TIN CABLE OVER LENGTH SHOWN.

IN-PROCESS VIEW 1



1. TRIM CABLE TO EXPOSE AND POINT CENTER CONDUCTOR AS SHOWN. (DO NOT SCORE CENTER CONDUCTOR)

IN-PROCESS VIEW 2



1. APPLY HEAT TO BODY TAIL WHERE SHOWN AND INSERT CABLE INTO CONNECTOR SUB-ASSEMBLY UNTIL FULLY SEATED. FLOW ADDITIONAL SOLDER WHERE SHOWN IF REQUIRED.

2. INSPECT CONNECTOR CONTACT AND INSULATOR INTERFACE DIMENSIONS USING THE APPROPRIATE GAGES TO VERIFY SURFACES ARE SUBFLUSH TO CONNECTOR INTERFACE WITHIN THE FOLLOWING RANGES:  
CONTACT = .000/.006 SUBFLUSH; INSULATOR = .000/.006 SUBFLUSH

IN-PROCESS VIEW 3

**PROPRIETARY NOTE**  
THIS DOCUMENT CONTAINS CONFIDENTIAL AND PROPRIETARY INFORMATION AND ALL DESIGN, MANUFACTURING, REPRODUCTION, USE, PATENT RIGHTS AND SALES RIGHTS ARE EXPRESSLY RESERVED BY SAMTEC, INC. THIS DOCUMENT SHALL NOT BE DISCLOSED, IN WHOLE OR PART, TO ANY UNAUTHORIZED PERSON OR ENTITY NOR REPRODUCED, TRANSFERRED OR INCORPORATED IN ANY OTHER PROJECT IN ANY MANNER WITHOUT THE EXPRESS WRITTEN CONSENT OF SAMTEC, INC.



520 PARK EAST BLVD, NEW ALBANY, IN 47150  
PHONE: 812-944-6733 FAX: 812-948-5047  
e-Mail info@SAMTEC.com code 55322

DO NOT SCALE DRAWING

SHEET SCALE: 6:1

DESCRIPTION: SMP SOCKET, DIRECT SOLDER FOR TEMP FLEX 1001935086

DWG. NO. PRF00-J-C-EE-086-SD

BY: MATT M. 01/10/2023 SHEET 2 OF 2