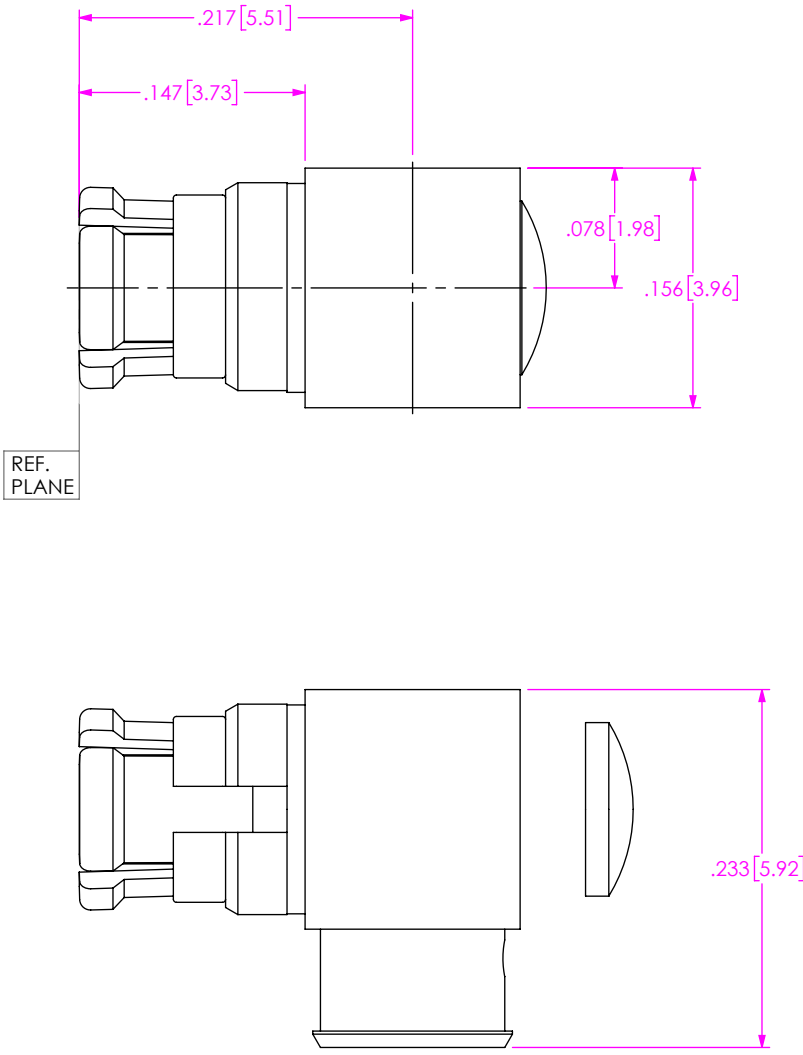


DESIGNED AND DIMENSIONED IN INCHES[MILLIMETERS]
ALL DIMENSIONS REFERENCE EXCEPT AS SHOWN

DO NOT
SCALE FROM
THIS PRINT



PRF00-J-C-XX-086-RD

SERIES
-00: SMP

GENDER
-J: JACK

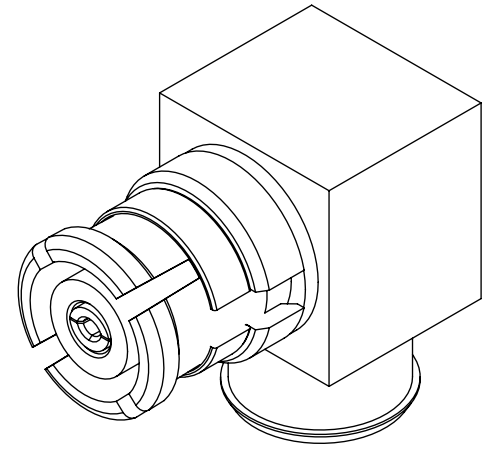
TYPE
-C: CABLE

TERMINATION
-D: DIRECT SOLDER


ORIENTATION
-R: RIGHT ANGLE

CABLE TYPE
-086: TEMP FLEX 1001935086

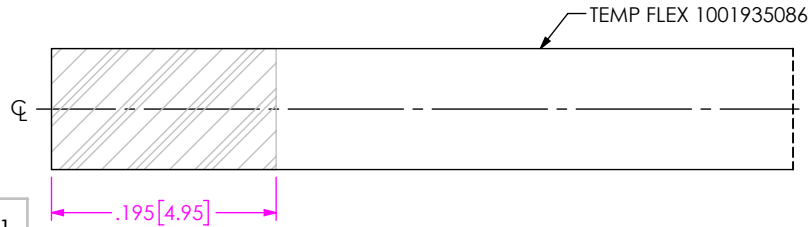
FINISH
-EE: 50μ" EXTRA HEAVY GOLD
CENTER CONTACT, 50μ" EXTRA
HEAVY GOLD OUTER CONTACT



- NOTES:
- MATERIALS:
BODY, CONTACT, EMI RING, ANTI-ROCK RING: BERYLLIUM COPPER
END CAP: BRASS ALLOY
INSULATOR: PTFE
 - FINISH:
BODY, CONTACT, EMI RING, ANTI-ROCK RING,
END CAP: 50μ" GOLD OVER 50μ" NICKEL PLATE

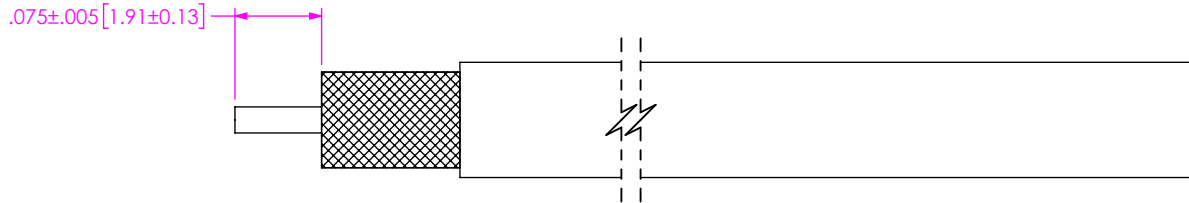
<p>PROPRIETARY NOTE</p> <p>THIS DOCUMENT CONTAINS CONFIDENTIAL AND PROPRIETARY INFORMATION AND ALL DESIGN, MANUFACTURING, REPRODUCTION, USE, PATENT RIGHTS AND SALES RIGHTS ARE EXPRESSLY RESERVED BY SAMTEC, INC. THIS DOCUMENT SHALL NOT BE DISCLOSED, IN WHOLE OR PART, TO ANY UNAUTHORIZED PERSON OR ENTITY NOR REPRODUCED, TRANSFERRED OR INCORPORATED IN ANY OTHER PROJECT IN ANY MANNER WITHOUT THE EXPRESS WRITTEN CONSENT OF SAMTEC, INC.</p>	 <p>520 PARK EAST BLVD., NEW ALBANY, IN 47150 PHONE: 812-944-6733 FAX: 812-948-5047 e-Mail info@SAMTEC.com code 55322</p>	
	<p>SHEET SCALE: 8:1</p> <p>DO NOT SCALE DRAWING</p>	<p>DESCRIPTION: SMP SOCKET, RIGHT ANGLE, DIRECT SOLDER FOR TEMP FLEX 1001935086</p>
	<p>DWG. NO.</p> <p>PRF00-J-C-XX-086-RD</p>	<p>BY: MATT M. 01/12/2023 SHEET 1 OF 2</p>

CABLE APPLICATION VIEWS



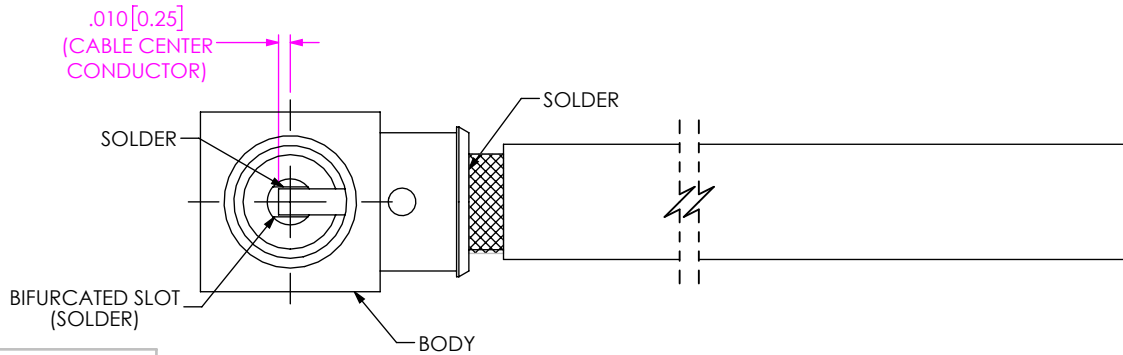
IN-PROCESS VIEW 1

1. STRIP THEN PRE-TIN CABLE OVER LENGTH SHOWN.



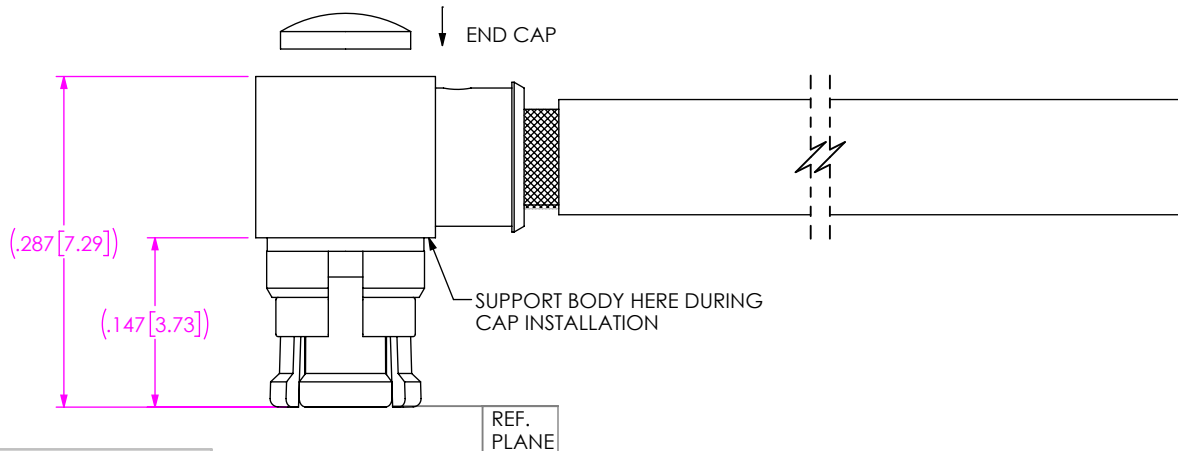
IN-PROCESS VIEW 2

1. TRIM CABLE TO EXPOSE CENTER CONDUCTOR BRAIDS AS SHOWN.



IN-PROCESS VIEW 3

1. INSERT INSULATOR & CONTACT INTO BODY (ORIENT CONTACT SLOT AS SHOWN).
2. INSERT CABLE INTO BODY UNTIL DIELECTRIC CORE IS FULLY SEATED. SOLDER CABLE BRAIDS TO BODY WHERE SHOWN.
3. SOLDER CABLE CENTER CONDUCTOR TO CONTACT SLOT COMPLETELY FILLING SLOT BUT MINIMIZING EXCESS FLOW ONTO CONTACT OUTER SURFACE.



IN-PROCESS VIEW 4

1. INSTALL END CAP INTO BODY COUNTERBORE AND PRESS CAP FLUSH TO BODY USING A FLAT TOOL OR VISE WITH BODY SHOULDER RESTING AGAINST A FLAT, PARALLEL SURFACE.
2. INSPECT CONNECTOR CONTACT AND INSULATOR INTERFACE DIMENSIONS USING THE APPROPRIATE GAGES TO VERIFY SURFACES ARE SUBFLUSH TO CONNECTOR INTERFACE WITHIN THE FOLLOWING RANGES: CONTACT = .000/.006 SUBFLUSH; INSULATOR = .000/.006 SUBFLUSH

PROPRIETARY NOTE
 THIS DOCUMENT CONTAINS CONFIDENTIAL AND PROPRIETARY INFORMATION AND ALL DESIGN, MANUFACTURING, REPRODUCTION, USE, PATENT RIGHTS AND SALES RIGHTS ARE EXPRESSLY RESERVED BY SAMTEC, INC. THIS DOCUMENT SHALL NOT BE DISCLOSED, IN WHOLE OR PART, TO ANY UNAUTHORIZED PERSON OR ENTITY NOR REPRODUCED, TRANSFERRED OR INCORPORATED IN ANY OTHER PROJECT IN ANY MANNER WITHOUT THE EXPRESS WRITTEN CONSENT OF SAMTEC, INC.



520 PARK EAST BLVD, NEW ALBANY, IN 47150
 PHONE: 812-944-6733 FAX: 812-948-5047
 e-Mail info@SAMTEC.com code 55322

DO NOT SCALE DRAWING

SHEET SCALE: 3:1

DESCRIPTION: SMP SOCKET, RIGHT ANGLE, DIRECT SOLDER FOR TEMP FLEX 1001935086

DWG. NO. PRF00-J-C-XX-086-RD

BY: MATT M. 01/12/2023 SHEET 2 OF 2